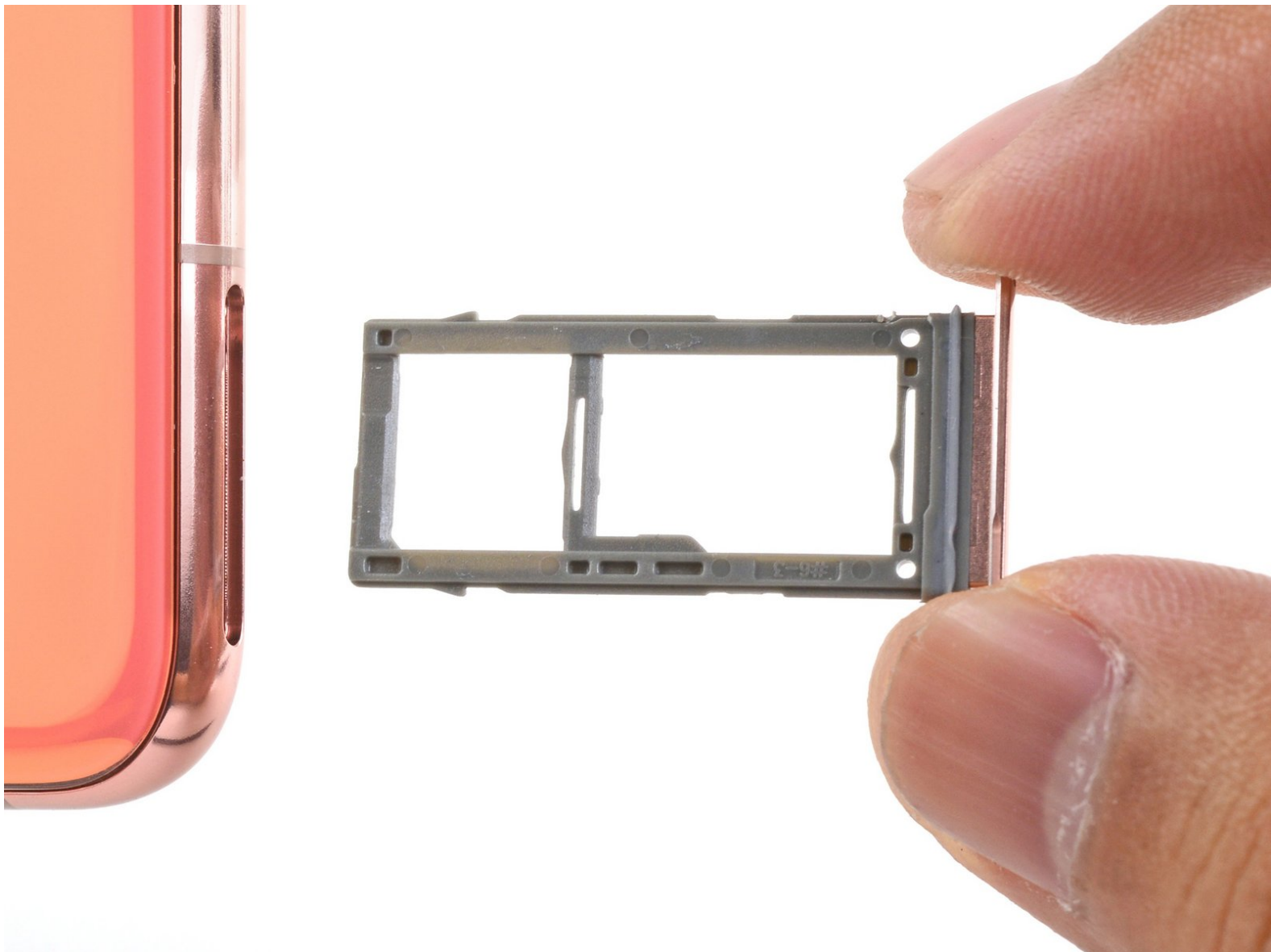




# Samsung Galaxy S10e SIM/Micro SD Card Tray Replacement

How to remove and replace the SIM/Micro SD card tray for the Samsung Galaxy S10e.

Written By: Arthur Shi



---

## INTRODUCTION

This guide shows how to remove and replace the SIM/Micro SD card tray for the Samsung Galaxy S10e.



### TOOLS:

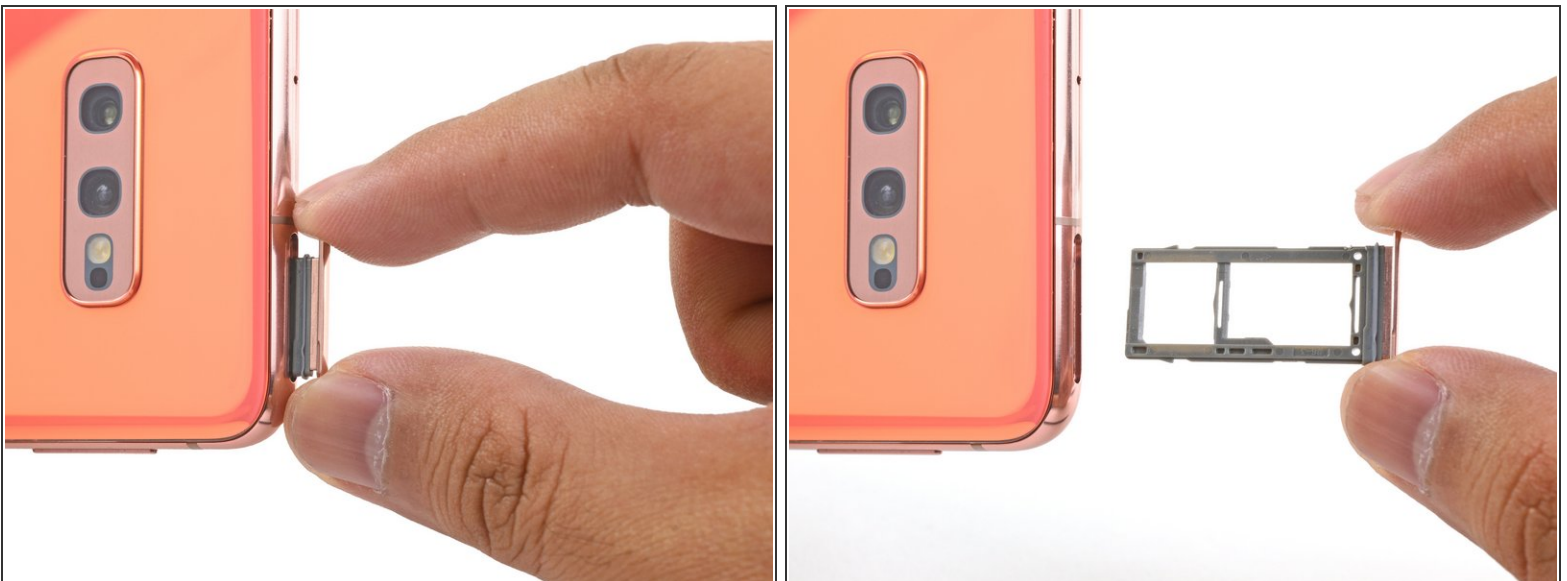
- [SIM Card Eject Tool](#) (1)
-

## Step 1 — Eject the SIM/Micro SD tray



- Insert a SIM card eject tool, bit, or a straightened paperclip into the small hole in the SIM card tray.
  - ❗ If you accidentally inserted the SIM eject tool into a different hole, don't worry! [You most likely haven't damaged anything.](#)
- Press firmly to eject the tray.

## Step 2 — Remove the SIM/Micro SD tray



- Pull the tray straight out to remove it.

This document was generated on 2022-08-16 01:30:34 AM (MST).

**To reassemble your device, follow these instructions in reverse order.**

After you've completed the repair, [follow this guide](#) to test your repair.