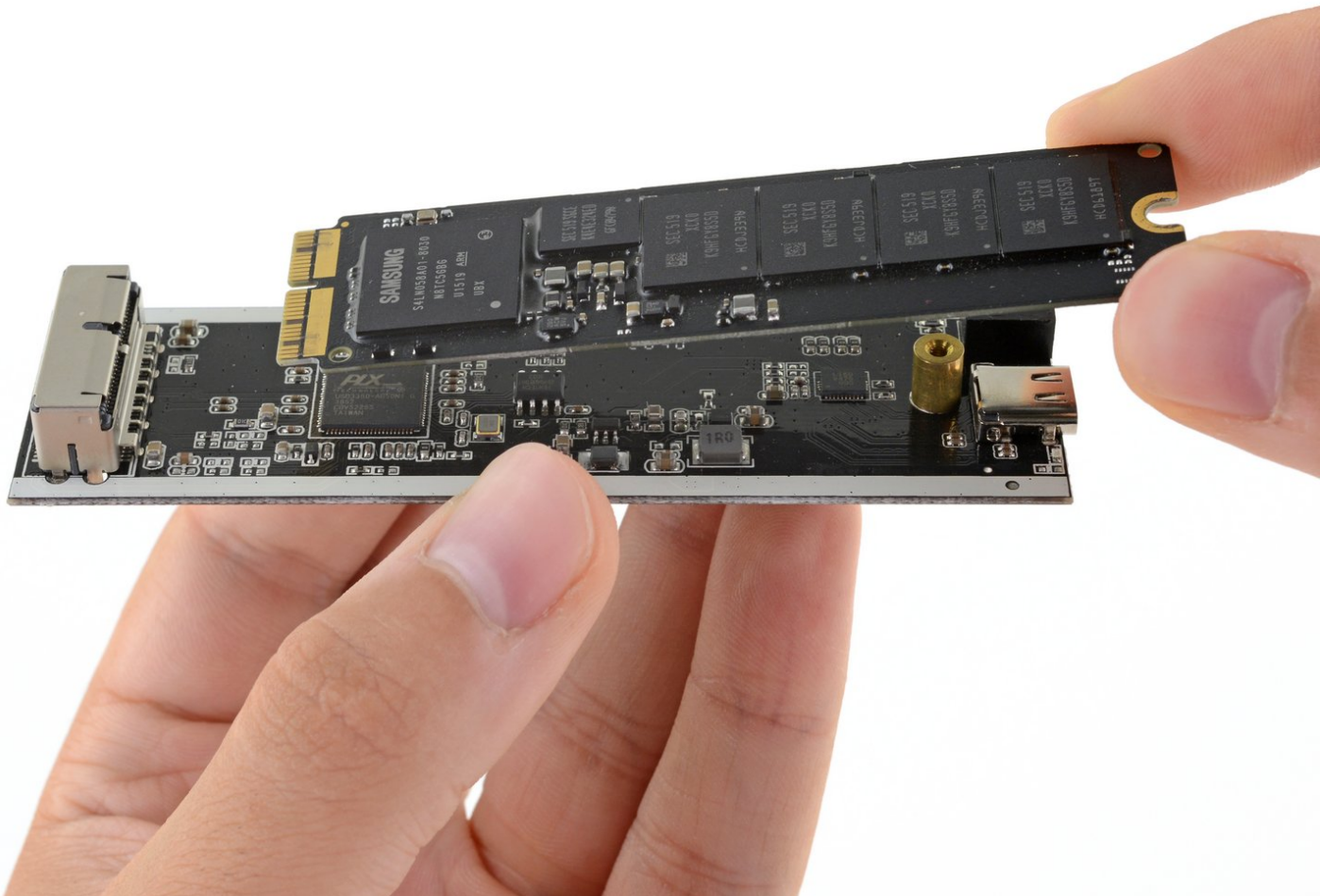




How To Install a Mac SSD into an External Enclosure

This guide will show you how to install a factory-installed Mac SSD to an external SSD enclosure.

Written By: Carsten Frauenheim



INTRODUCTION

iFixit's [SSD enclosure](#) allows you to repurpose a factory-installed Mac SSD as a portable external drive. Follow this guide to learn how to install your SSD into the enclosure.

If you still need to complete your SSD upgrade, [find your Mac](#) and look for the *SSD Replacement* guide.

Note: These enclosures are designed to be used with factory-installed Mac Solid State Drives, and *will not* work with other PCIe replacement drives and adapters, including OWC Aura Pro drives.



TOOLS:

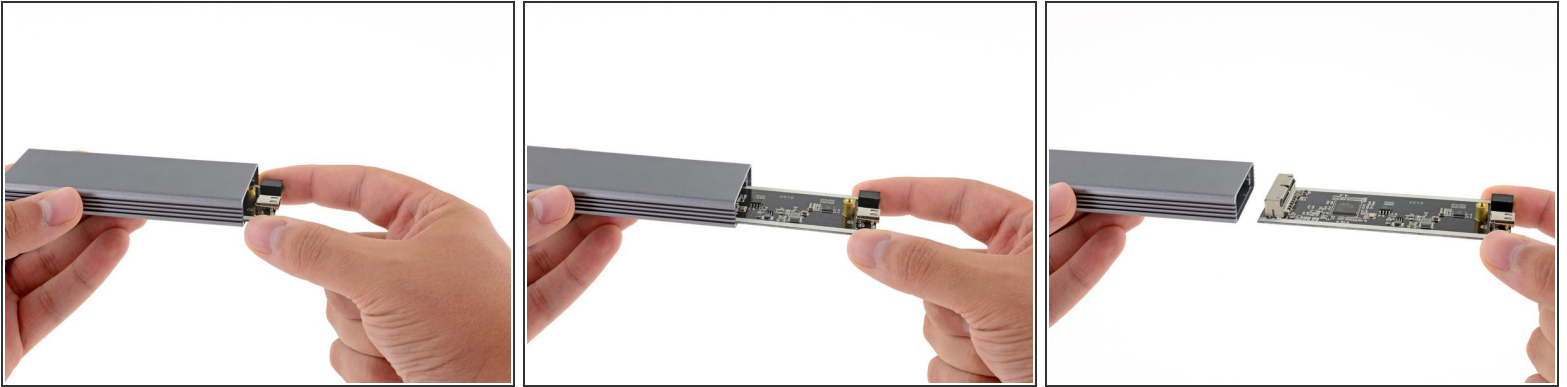
- [Phillips #00 Screwdriver](#) (1)



PARTS:

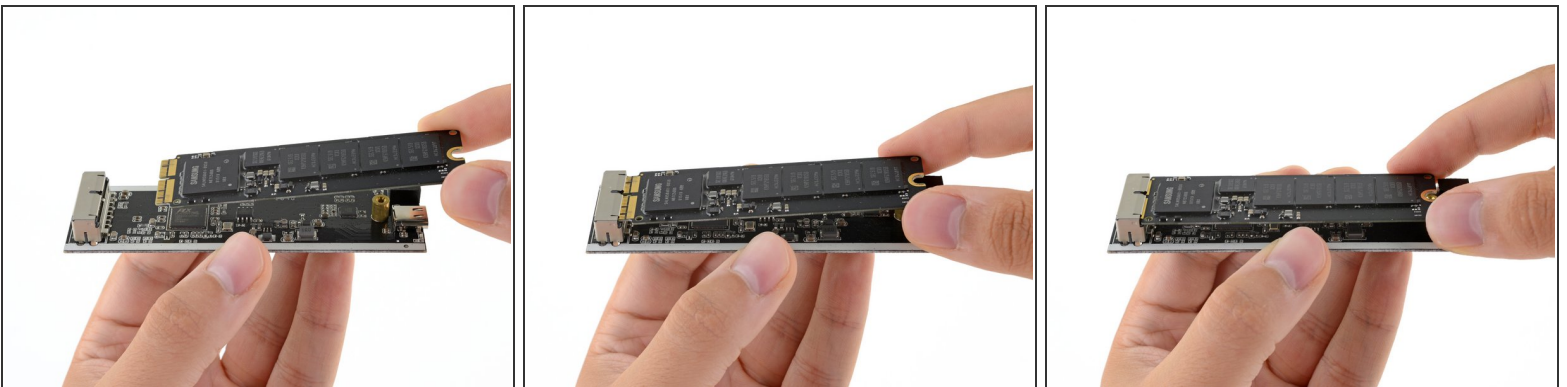
- [External SSD Enclosure for Select Mid 2013 to Mid 2015 Macs](#) (1)
- [MacBook Air 11" \(2013-2015\) 13" \(2013-2017\) MacBook Pro Retina 13" and 15" \(2015\) SSD](#) (1)

Step 1 — Disassemble the enclosure



- Slide the SSD sled out of the metal enclosure to remove it.

Step 2 — Install the SSD into the enclosure



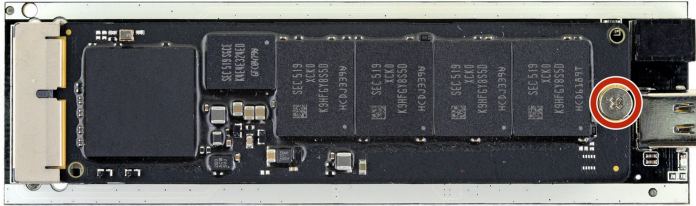
- Carefully insert your Mac OEM SSD as shown, with the [golden contact pads](#) below the connector pins facing upward.

ⓘ The SSD and enclosure are both keyed, so the SSD can only be installed one way.

⚠ The SSD might take a significant amount of force to insert. Make sure you have the orientation correct before you apply any pressure.

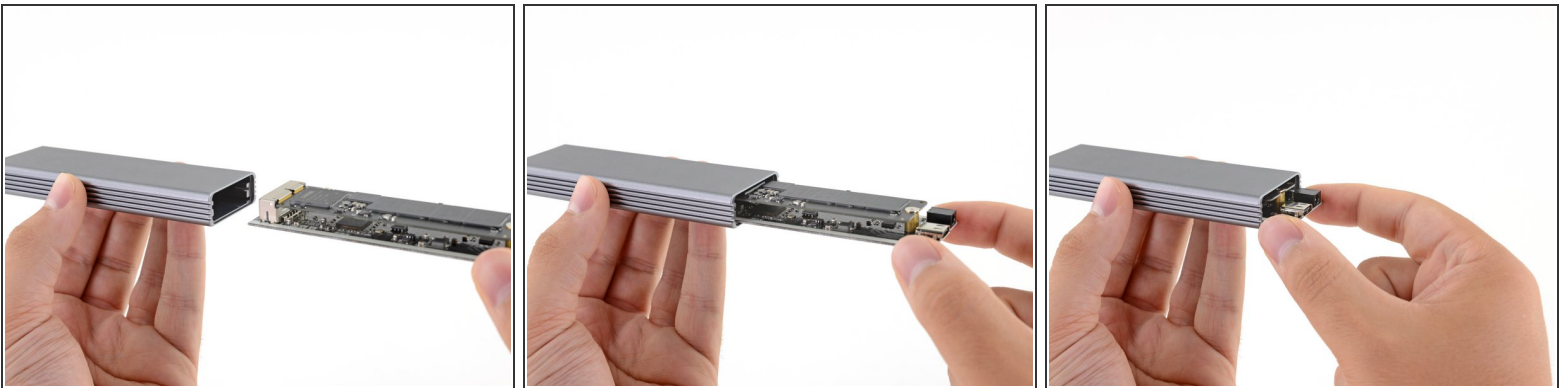
ⓘ When the SSD is fully inserted, the notch at the bottom of the drive should be [aligned with the hole](#) for the screw in the enclosure.

Step 3



- Use a Phillips driver to install the 4.5 mm screw securing the bottom of the SSD.

Step 4 — Reassemble the enclosure



- Slide the SSD sled into the metal enclosure, SSD connector end first.
 - ❗ Make sure the enclosure is in the correct orientation—the sled slides in on the [thin rails](#).
 - ❗ The USB-C port should be facing out once installed.

Step 5



- Place the port cover plate onto the end of the enclosure, aligning the USB-C port with its cutout.
- ① The screw hole [chamfers](#) should face outwards.

Step 6



- Use a Phillips driver to install the two 8 mm screws onto the end of the enclosure.

Step 7 — Use your new external SSD



- The drive is now ready to be connected to your computer with either of the included USB cables.

Once your drive is installed, you can [transfer data from it](#), or use Disk Utility to format it and [use it as a Time Machine backup](#).