



Philips Sonicare 9350 Battery Replacement

The Philips Sonicare 9350 electric toothbrushes...

Written By: Dongyi Lin



INTRODUCTION

The Philips Sonicare 9350 electric toothbrushes has rechargeable lithium batteries. If the electric toothbrush doesn't start, battery failure is most likely to blame. If you need to replace the battery, follow this guide.

This guide requires soldering so if you're not familiar or would like more information, check out this [article](#) on the site.



TOOLS:

Soldering Iron 60w Hakko 503F (1)

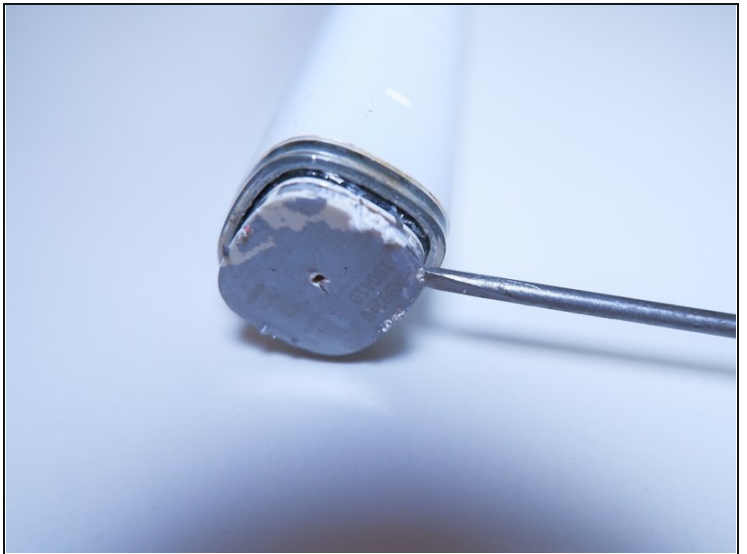
Spudger (1)



PARTS:

680mha lithium battery (1)

Step 1 — Head removal



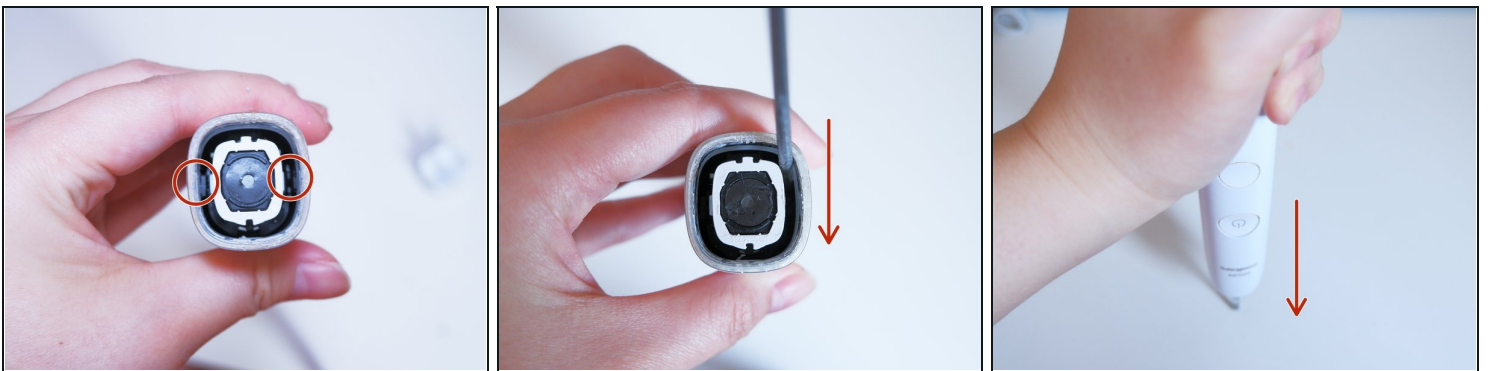
- Remove the toothbrush head.
- Use a screwdriver to pry gently around the bottom of the toothbrush.

Step 2 — Remove the bottom



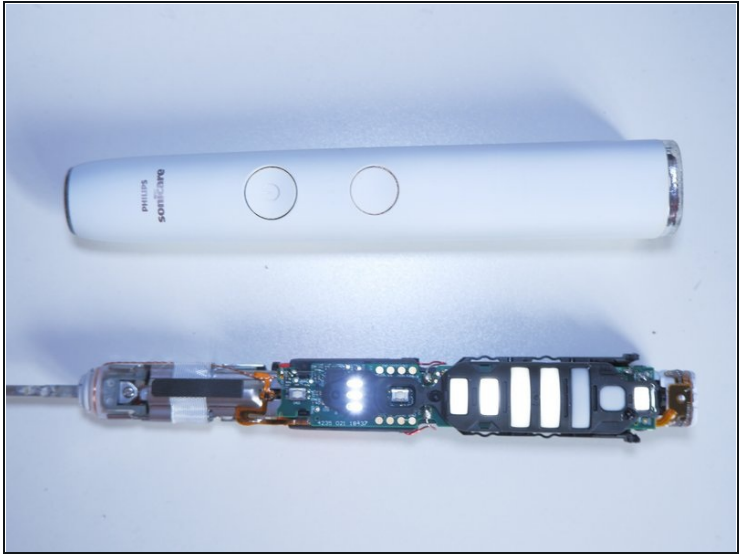
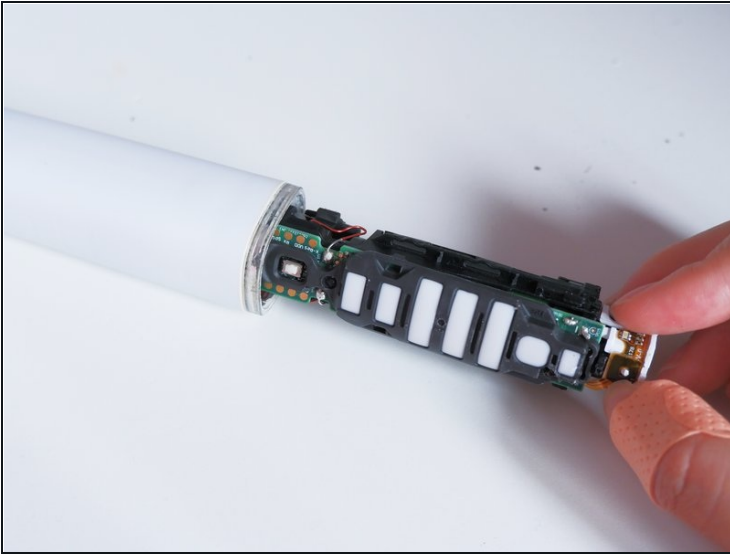
- After the bottom of the toothbrush is pried loose, remove it from the base of the brush.

Step 3



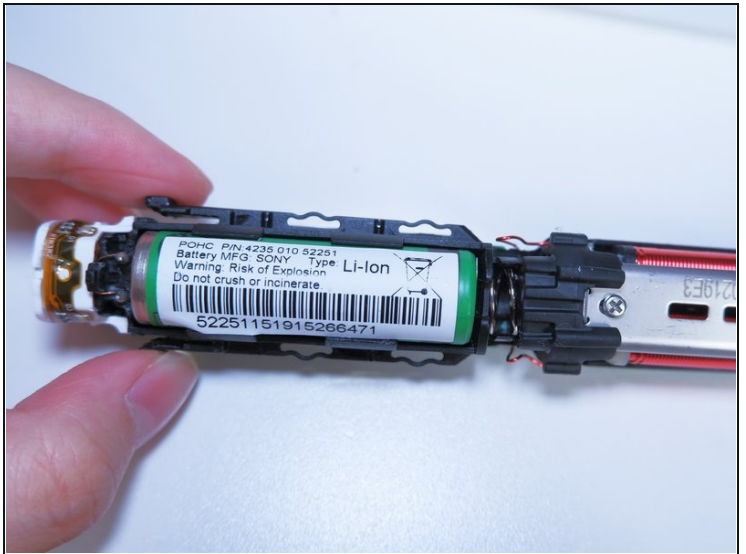
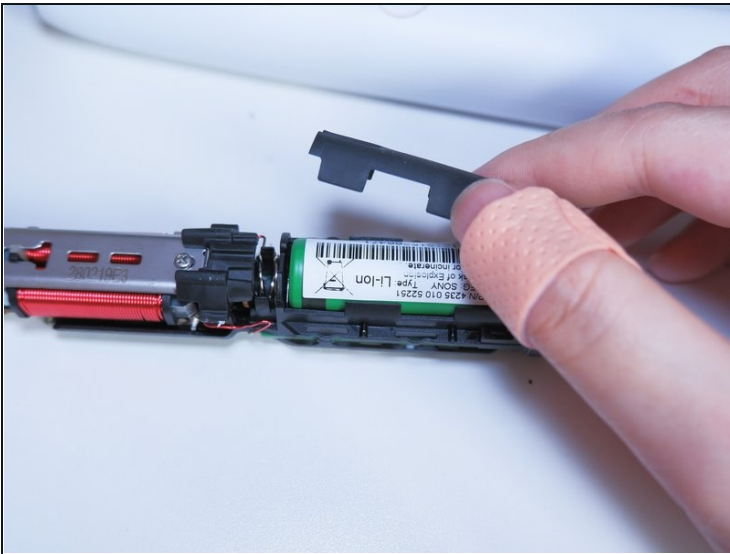
- Use a spudger to open the two clasps inside the toothbrush handle in a downward motion.
- Turn the toothbrush upside down and push down on a hard surface—this will slide the toothbrush's internal body out.

Step 4 — Extract the internals



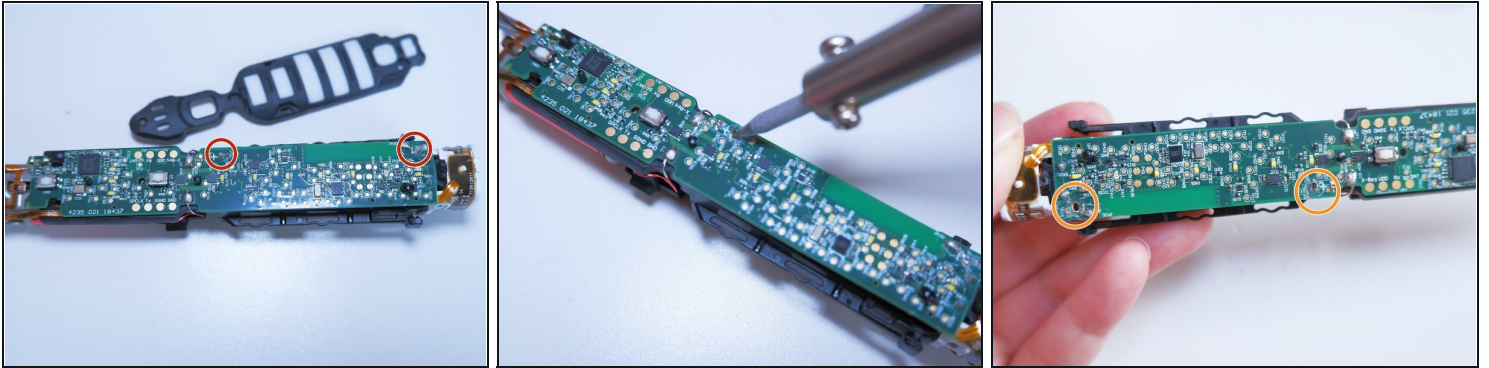
- Pull out the internals of the toothbrush.

Step 5 — Access the battery



- Open the protective cover of the battery.
 - Check the battery model.
- ❗ In this case, the model is a Sony 680mAh lithium battery.

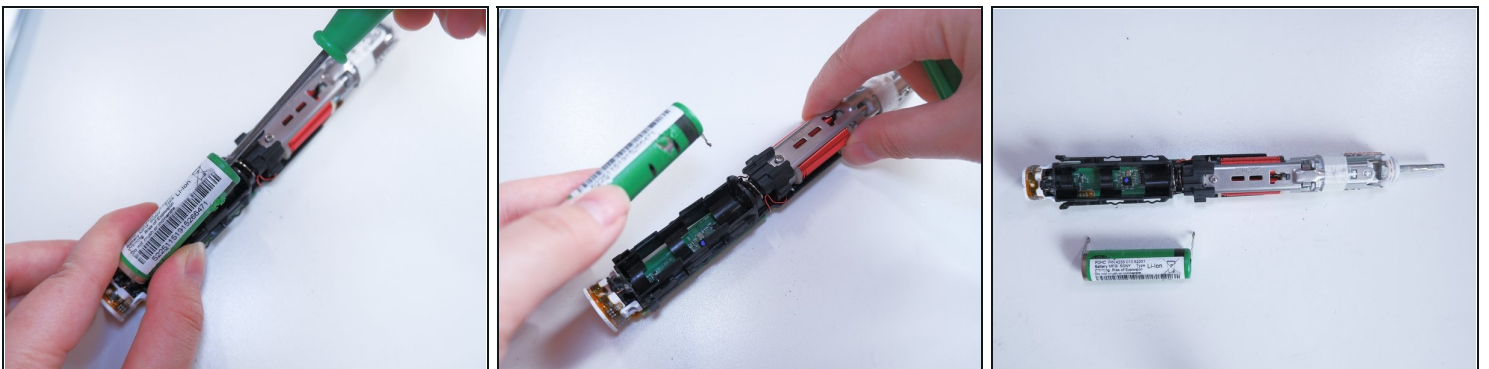
Step 6 — Desolder both terminals



- Open the protection cover of the circuit board.
- Find the welding points of the positive and negative electrodes of the battery and use the soldering iron to [desolder](#).
- The battery will fall off after desoldering as shown in the figure.

⚠ Be careful not to touch other parts of the circuit board when desoldering.

Step 7 — Install a new battery



- Use a spudger to pry the battery out at a 45 degree angle.
- ☑ After successfully removing the battery, install the new battery using the reverse procedure.

⚠ Always use ESD safe tools when working on a circuit board or with batteries such as a nylon spudger.

To reassemble your device, follow these instructions in reverse order.