



2010-2017 Suzuki Swift Oil and Oil Filter Replacement

This guide will show you how to replace the engine oil and oil filter on the 2010-2017 Suzuki Swift.

Written By: knipwim



INTRODUCTION

The engine oil and oil filter need regular replacing. According to the owner's manual, this should be done every 15,000 km or 9,000 miles, every year or whenever the oil clean warning light appears. When use is intensive, these values should be cut in half.

Gasoline engines are recommended to use 0W-20. Where 5W-30 can also be used in both, the sport version also lists 10W-40 and 10W-30. The recommendation for the diesel engine is 5W-30. For the lifespan of the particulate filter an ACEA C2 or C3 quality is required.

When also performing a filter replace, the regular gasoline engine requires about 3,1 liters of engine oil, the sport version 3,9 liters and the diesel engine 3,2 liters.



TOOLS:

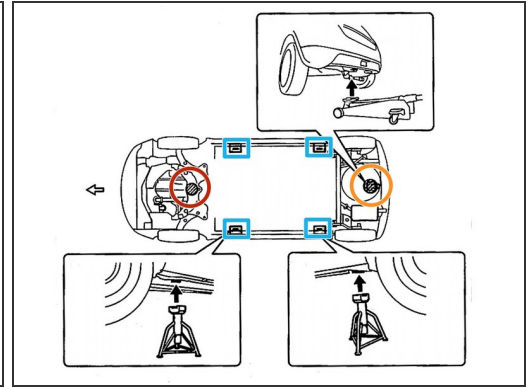
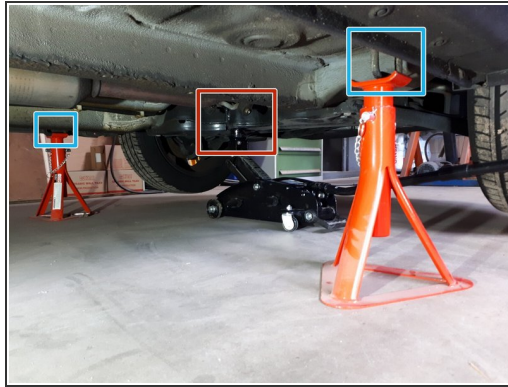
- [Hydraulic Floor Jack](#) (1)
- [Jack Stands](#) (1)
- [14mm socket](#) (1)
- [1/2" Drive Ratchet](#) (1)
- [Torque Wrench](#) (1)
- [Oil Filter Wrench](#) (1)
- [Oil Drain Pan](#) (1)
- [Funnel](#) (1)



PARTS:

- [Engine Oil - Quart](#) (3)
- [Engine Oil Filter](#) (1)

Step 1 — jack up your car



⚠ CAUTION: THIS PROCESS IS POTENTIALLY DANGEROUS. Be aware of your surroundings and do not go underneath your vehicle until this step is completed.

⚠ Make sure the handbrake is on, and the gear is in **reverse** for manual or **park** for an automatic transmission car.

⚠ Follow the safety instructions of the jack stand and jack.

i Refer to [this guide](#) for more detailed information on how to jack up a car.

- Put the jack under the rear frame hook and jack up the back of the car until the jack stands can be put under the jack supports.
- Put jack stands under the rear jack supports. Slowly lower the weight of the car onto them by lowering the jack.
- Put the jack under the front sub frame and jack up the front of the car until the jack stands can be put under the jack supports.
- Put jack stands under the front jack supports. Slowly lower the weight of the car onto them by lowering the jack.

Step 2 — Preparations



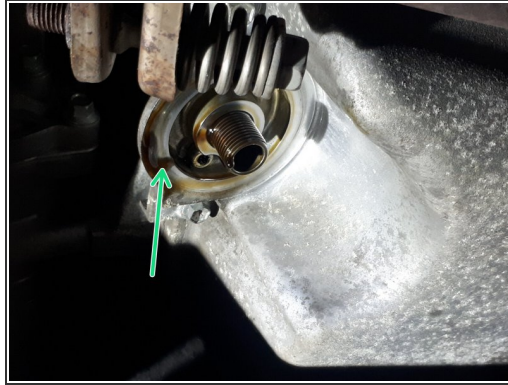
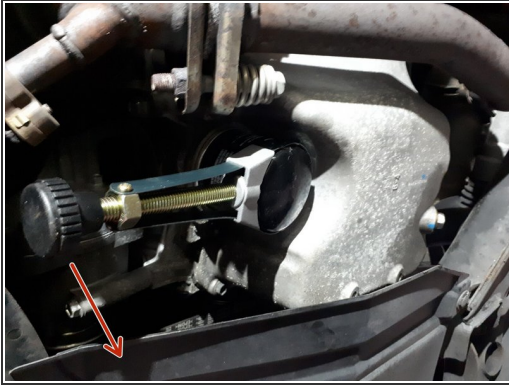
- ❗ The oil pan is located at the bottom of your engine.
- The oil drain plug is located at the back of the oil pan.
- The oil filter is located at the front.
- ❗ After engine use, wait until the drain plug can be touched with your bare hands, before attempting the change the oil.

Step 3 — drain the engine oil



- Locate the oil filler cap and rotate left to remove it. This allows air into the top of the system while the oil drains away at the bottom.
- Place the oil drain pan under the plug.
- Unbolt the plug with a 14mm wrench and let the oil drain completely.
- When drained, clean the drain plug and gasket and bolt it back on. Using torque wrench tighten it to:
 - 35 N·m for gasoline engines
 - 20 N·m for diesel engines

Step 4 — replace the oil filter



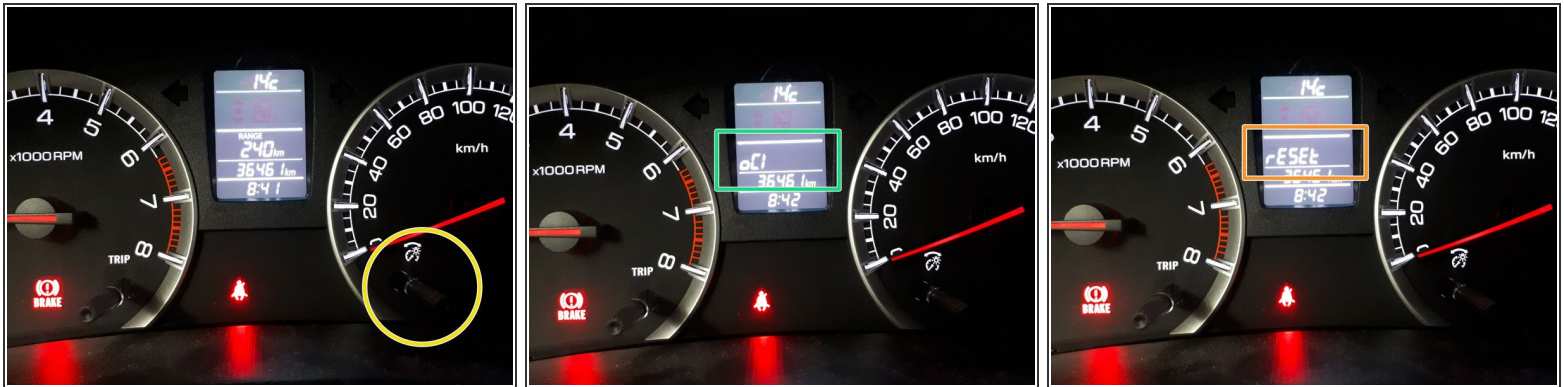
- Attach a filter wrench to the filter and turn counter clockwise. Repeat until the filter can be unscrewed by hand.
- Place the oil drain pan under the filter, unscrew the oil filter and let the remaining oil drain.
- Clean the connecting surface.
- Lubricate the rubber gasket on the new oil filter with some engine oil.
- Screw the new filter on (hand tight).
- Using the filter wrench, add 3/4 turn to tighten it.

Step 5 — add the new engine oil



- Ensure the car is level to ensure a correct dipstick measurement.
- Using the funnel, add the required amount of oil for your engine type. You can add less for comfort, measure, and add more incrementally.
- To measure, perform the following actions:
 - Pull the dipstick from the engine and wipe it clean.
 - Insert the clean dipstick completely and pull it out again.
 - The oil level should be between the 2 markers.
- To allow the oil to distribute through the system, idle the engine a couple of minutes. Check the oil level again and check for leaks.
- When finished, put back the oil filler cap and turn right to close. Clean any spilled oil from the engine.

Step 6 — reset the oil check light



i Resetting the oil check light is done inside the setting mode.

- Enter the setting mode by switching the car key to the ON position and selecting "range" with the display selector, and pressing the display selector for at least 2 seconds.
- i** The menu has 4 options which can be scrolled through by turning the display selector left or right.
 - Scroll until you see the **oIL** (oil clear) option. Press the display selector to enter the menu option and select the **reset** action.
 - Confirm the reset action by pressing the display selector. You will see a **succe** message and will return in the menu.
 - Scroll the menu until you see the **end** option and press the display selector to confirm.

Lower your car now if you haven't done so when leveling the car for taking an oil measurement.