



# How to use a floor jack with the 2010-2017 Suzuki Swift

This guide will show how to jack up the 2010-2017 Suzuki Swift using a hydraulic floor jack.

Written By: knipwim



---

## INTRODUCTION

Depending on the work that needs to be done, you want either front or back jacked up, or both. This guide will show the latter.

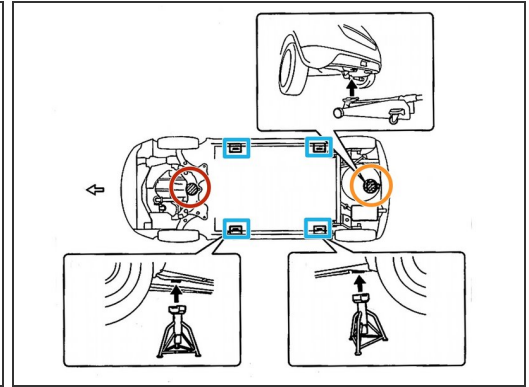
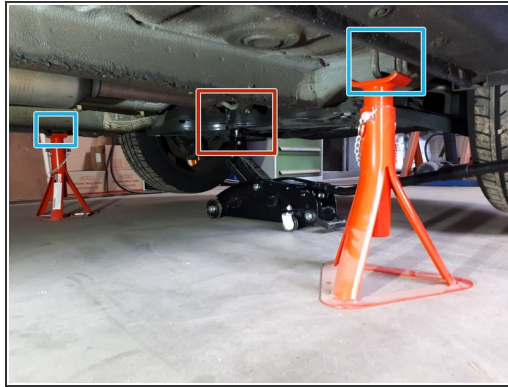
Jacking up the back first provides some more room for the jack at the front.



### TOOLS:

- [Hydraulic Floor Jack](#) (1)
  - [Jack Stands](#) (1)
-

## Step 1 — jack up your car



**⚠ CAUTION: THIS PROCESS IS POTENTIALLY DANGEROUS.** Be aware of your surroundings and do not go underneath your vehicle until this step is completed.

**⚠** Make sure the handbrake is on, and the gear is in **reverse** for manual or **park** for an automatic transmission car.

**⚠** Follow the safety instructions of the jack stand and jack.

**i** Refer to [this guide](#) for more detailed information on how to jack up a car.

- Put the jack under the rear frame hook and jack up the back of the car until the jack stands can be put under the jack supports.
- Put jack stands under the rear jack supports. Slowly lower the weight of the car onto them by lowering the jack.
- Put the jack under the front sub frame and jack up the front of the car until the jack stands can be put under the jack supports.
- Put jack stands under the front jack supports. Slowly lower the weight of the car onto them by lowering the jack.

To lower the car, follow these instructions in reverse order.