



MacBook Air 13" Early 2020 Trackpad Replacement

Use this guide to replace a faulty trackpad in...

Written By: Carsten Frauenheim



INTRODUCTION

Use this guide to replace a faulty trackpad in an Early 2020 MacBook Air.



TOOLS:

- [P5 Pentalobe Screwdriver Retina MacBook Pro and Air](#) (1)
- [Spudger](#) (1)
- [T4 Torx Screwdriver](#) (1)
- [T5 Torx Screwdriver](#) (1)
- [Tweezers](#) (1)
- [T3 Torx Screwdriver](#) (1)



PARTS:

- [MacBook Air 13" \(A2179, A2337 2020\) Trackpad Cable](#) (1)
- [MacBook Air 13" \(A2179, Early 2020\) Trackpad](#) (1)

Step 1 — Remove the screws securing the lower case



i Before starting this procedure, you should disable your Mac's **Auto Boot** feature. Auto Boot powers on your Mac when you open the lid, and may be accidentally triggered during disassembly. [Use this guide](#) to disable Auto Boot.

- If your MacBook is running Big Sur v11.1 or later, disabling Auto Boot may not work. You can proceed normally, but make sure to disconnect the battery as soon as you're inside.

⚠ Completely power off and unplug your MacBook Air before you start. Close the display and flip the entire laptop upside-down.

- Use a P5 driver to remove the following screws:

- Two 7.9 mm screws
- Two 7.1 mm screws
- Six 2.6 mm screws

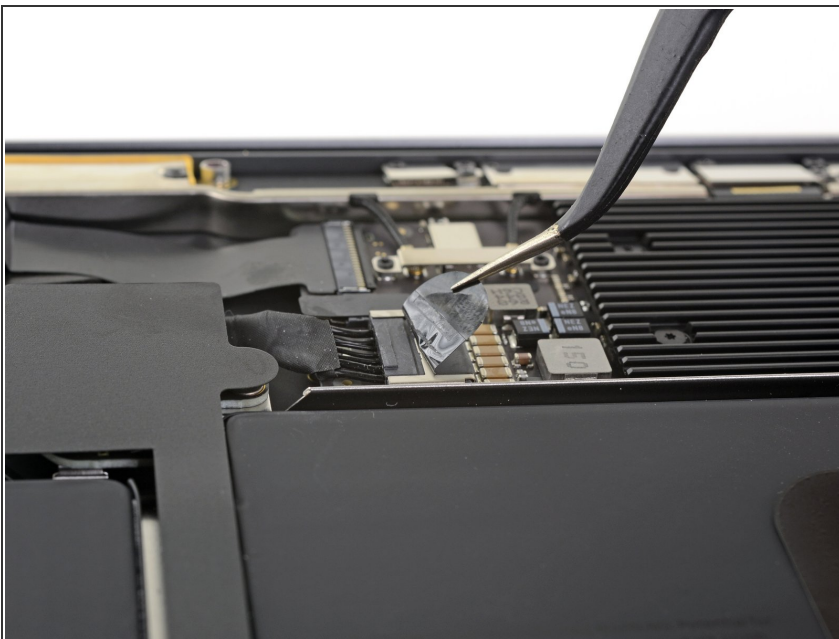
i Throughout this repair, [keep track of each screw](#) and make sure it goes back exactly where it came from to avoid damaging your MacBook.

Step 2 — Remove the lower case



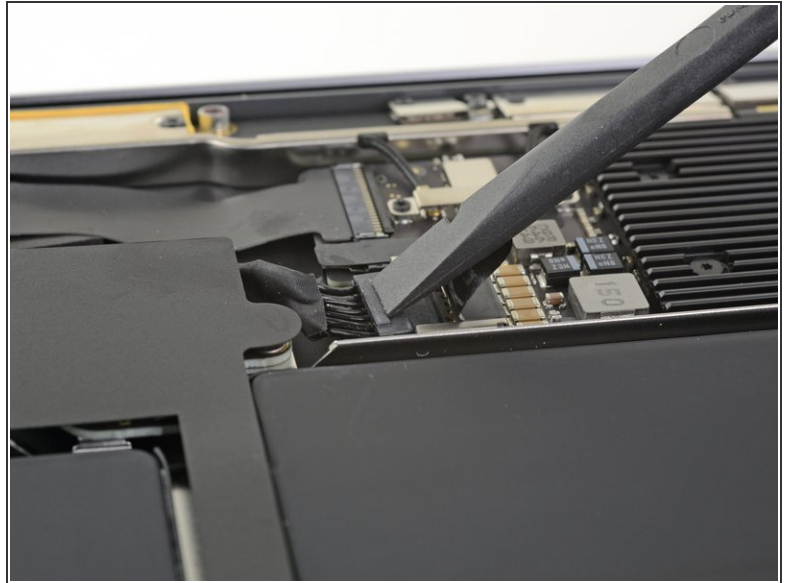
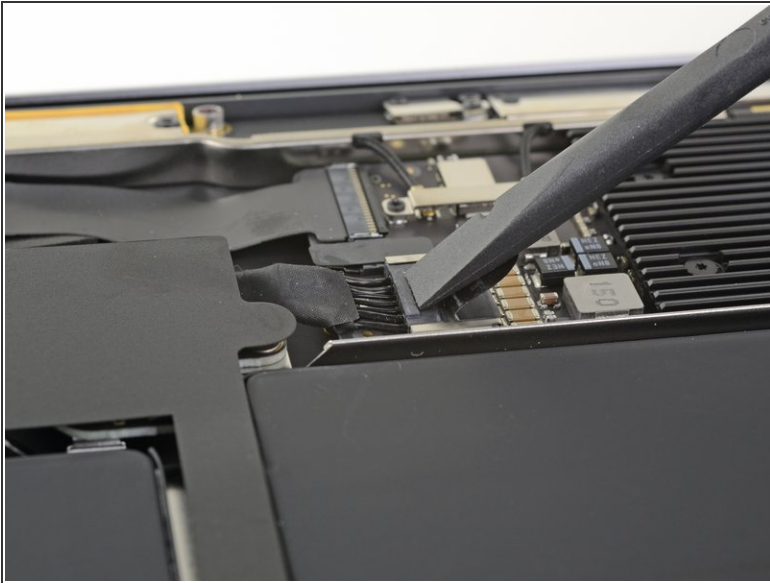
- Wedge your fingers between the display and the lower case and pull upward to pop the lower case off the Air.
 - Remove the lower case.
- ✦ To reinstall the lower case:
- Set it in place and press firmly to engage the two hidden clips underneath. You should feel and hear them snap into place.

Step 3 — Disconnect the battery



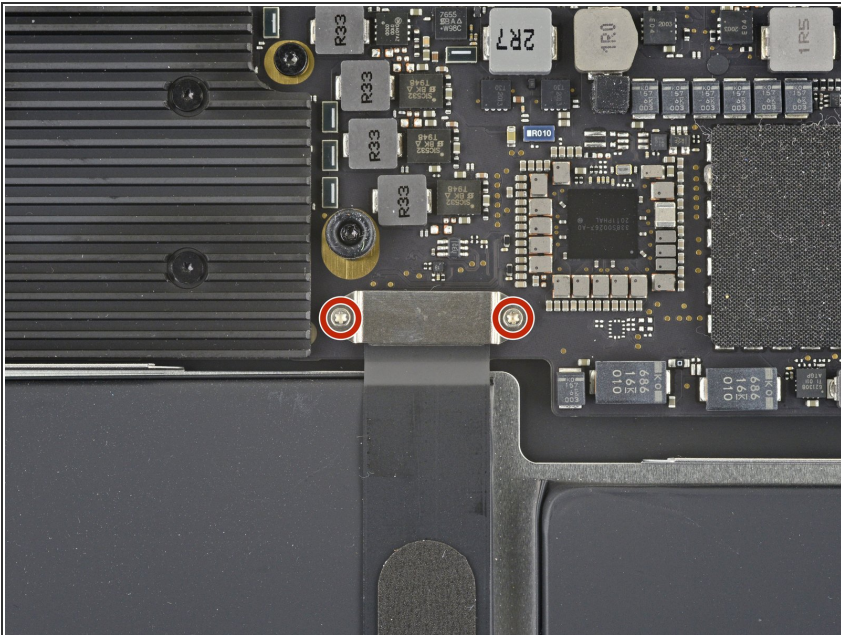
- Peel back the tape covering the battery connector enough to reveal the connector underneath.

Step 4



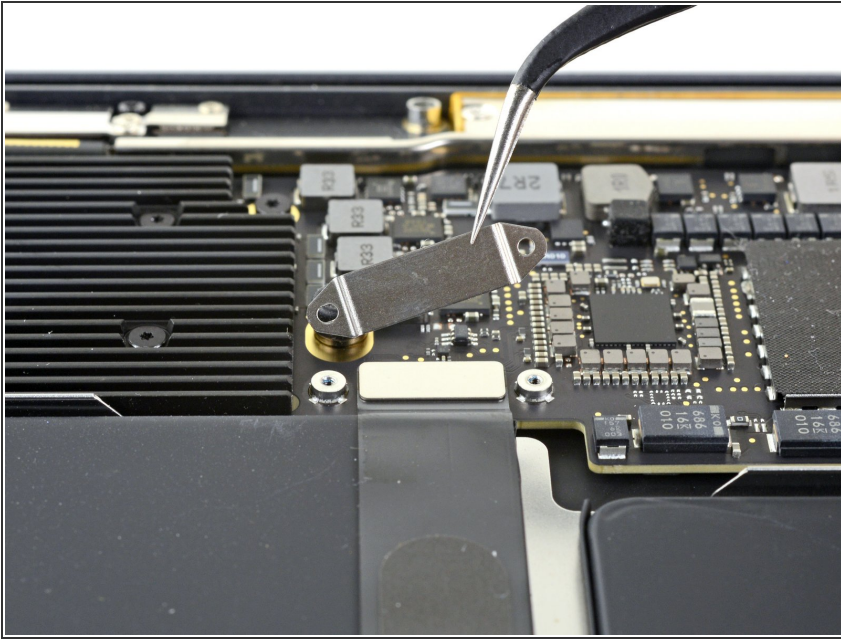
- Use a spudger to slide the battery connector parallel to the logic board and out of its socket on the logic board.

Step 5 — Remove the trackpad cable cover



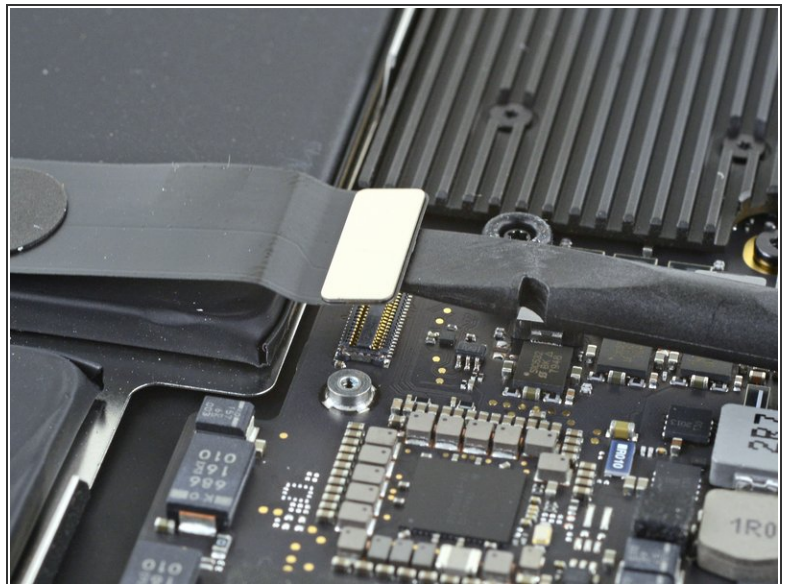
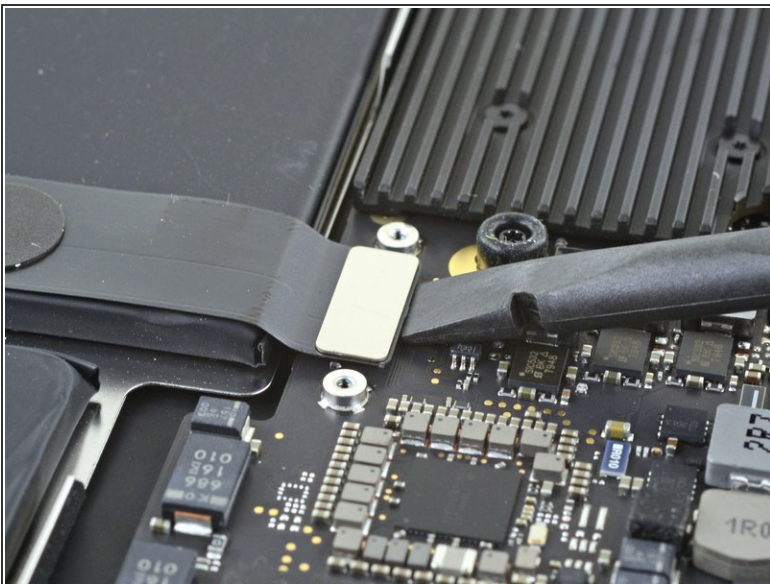
- Use a T3 Torx driver to remove the two 1.4 mm screws securing the trackpad cable cover.

Step 6



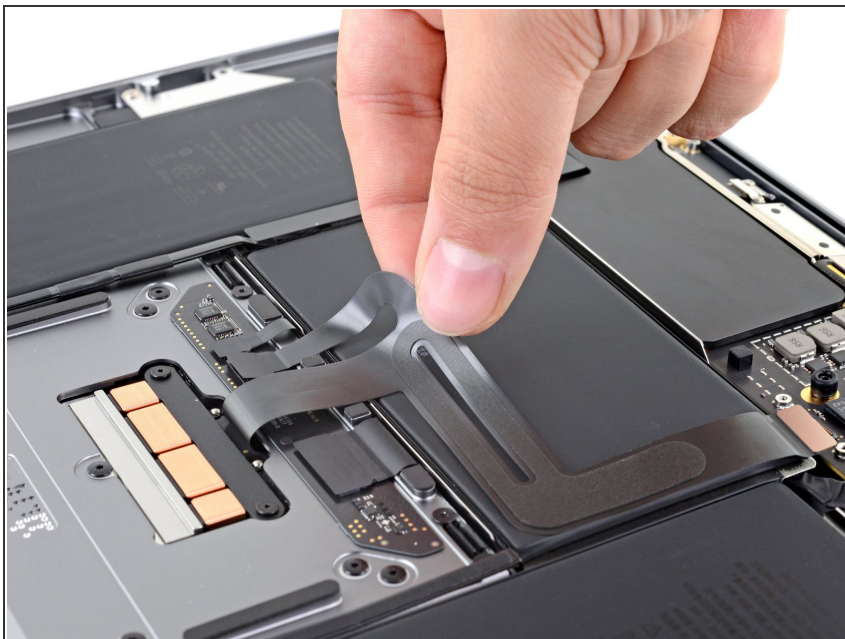
- Remove the trackpad cable cover.

Step 7 — Disconnect the trackpad cable



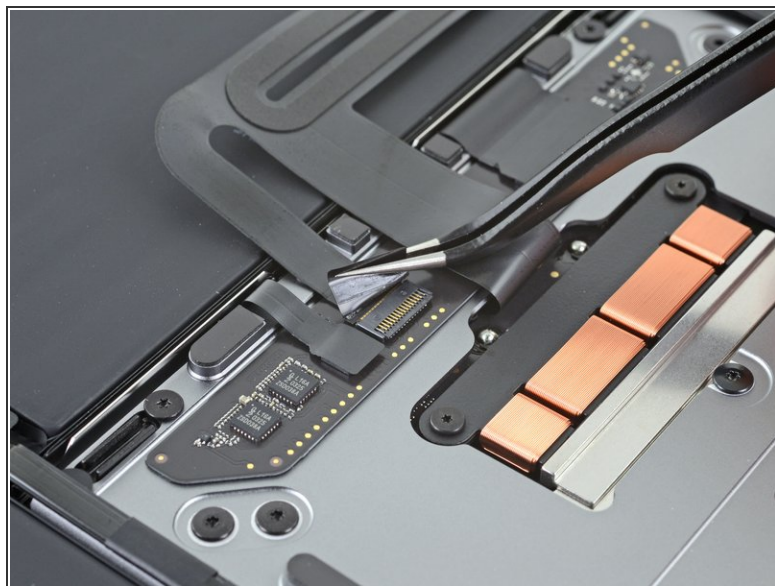
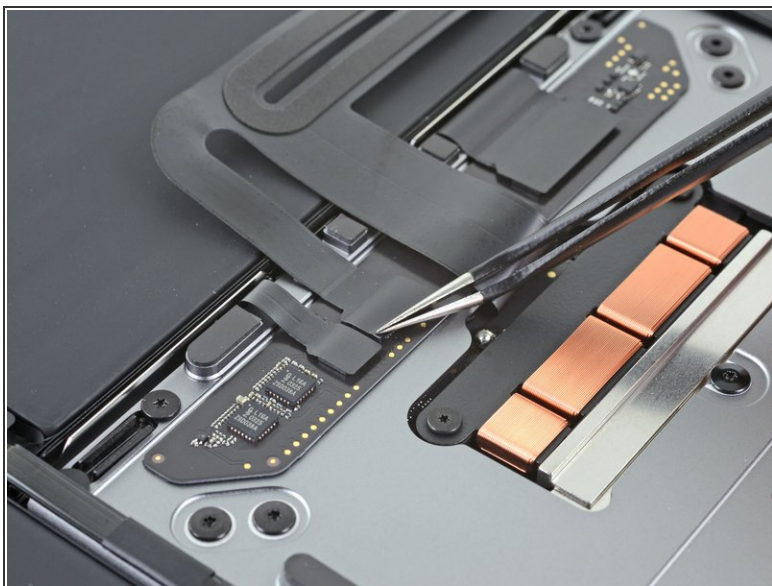
- Use the flat end of a spudger to pry the trackpad cable connector up and out of its socket.
- ☞ To re-attach [press connectors](#) like this one, carefully align and press down on one side until it clicks into place, then repeat on the other side. Do not press down on the middle. If the connector is misaligned, the pins can bend, causing permanent damage.

Step 8



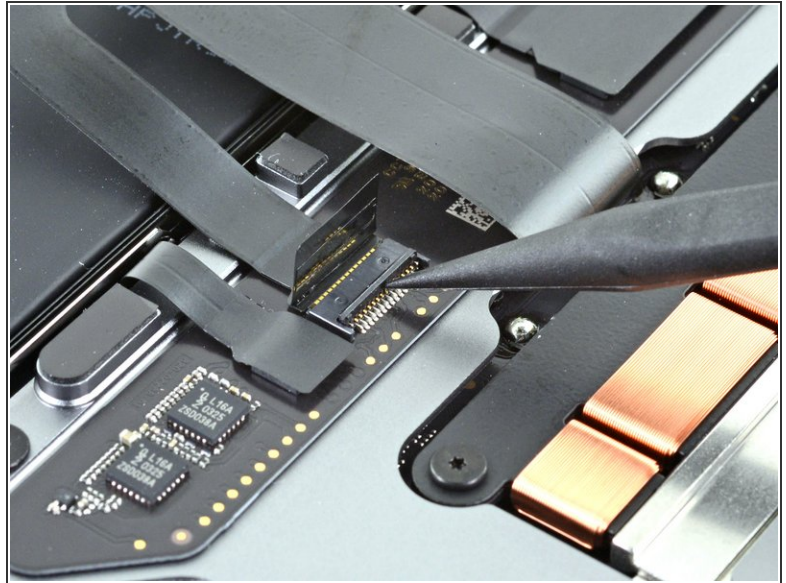
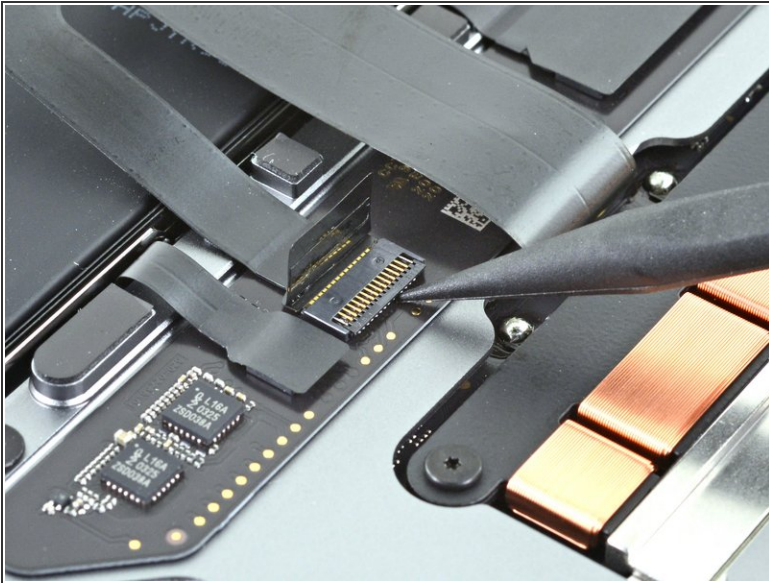
- Carefully peel the trackpad cable off of the battery.
- ⓘ The trackpad cable is secured to the battery with some light adhesive.

Step 9 — Disconnect the trackpad cable



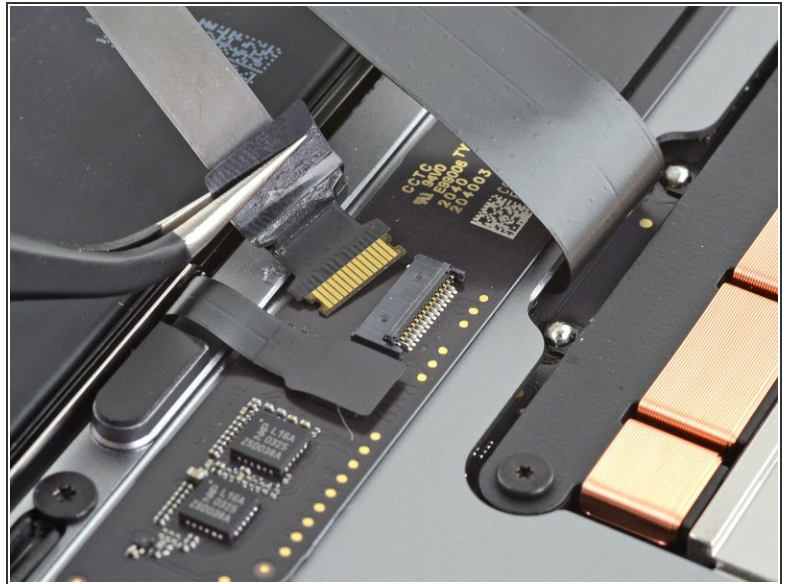
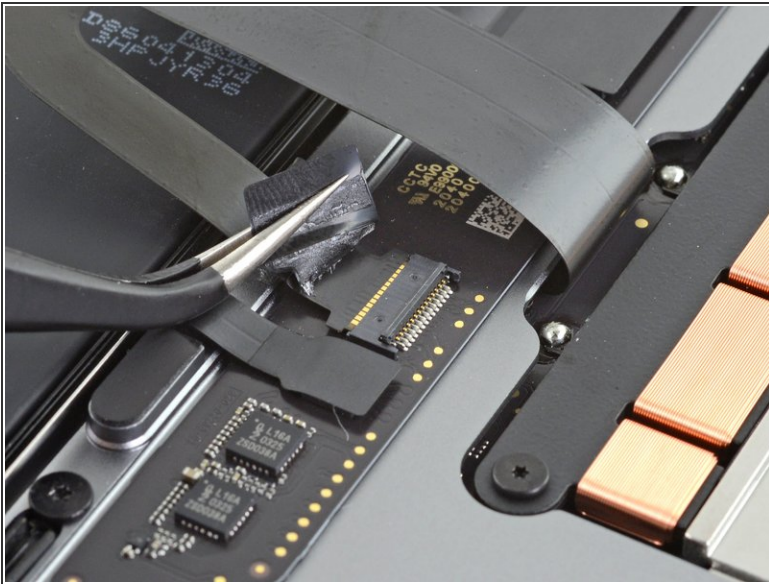
- Use a pair of tweezers to peel back the tape covering the trackpad cable connector.

Step 10



- Use the pointed end of a spudger to lift up the small locking flap on the trackpad cable's [ZIF connector](#).

Step 11



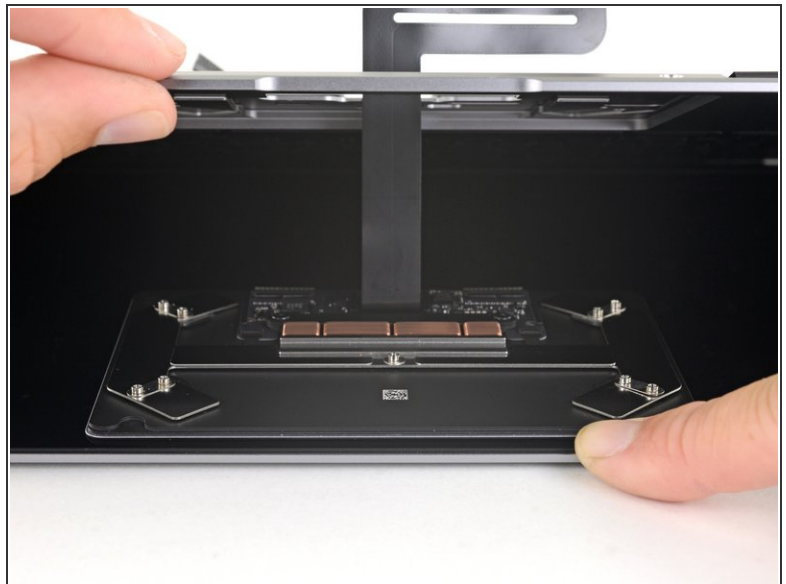
- Slide the trackpad cable out of its connector.
 - ⓘ If possible, grip the cable by the tape, not by the cable itself.

Step 12 — Remove the trackpad screws



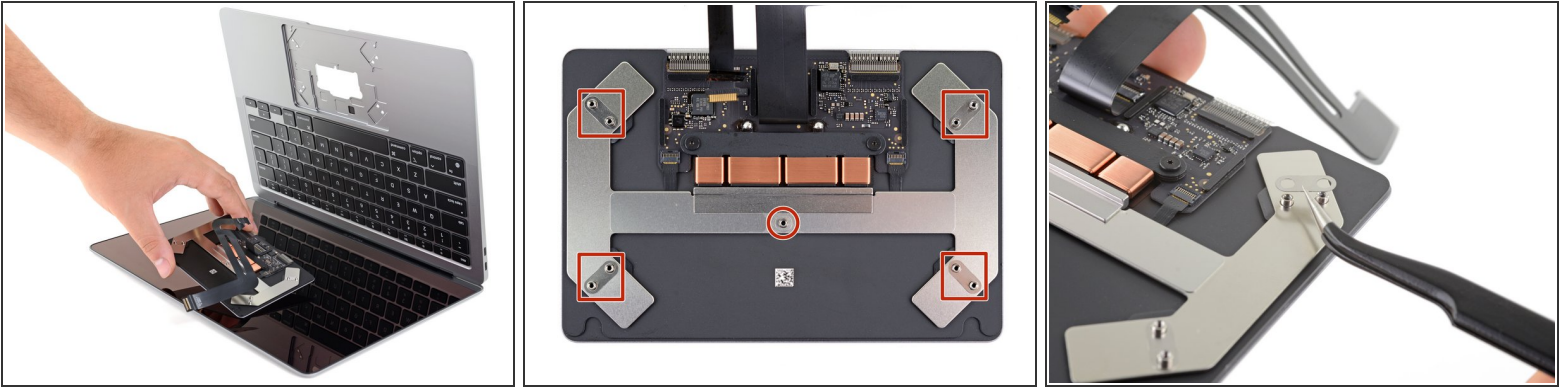
- Use a T5 Torx driver to remove the nine screws securing the trackpad:
 - Eight fully-coated 3.1 mm screws
 - One partially-coated 3.1 mm screw

Step 13 — Remove the trackpad



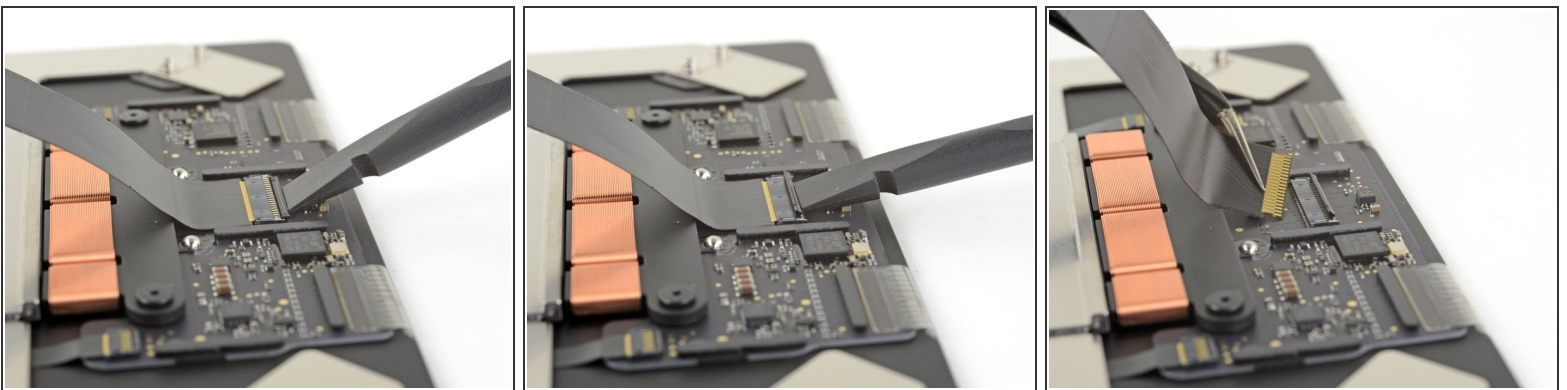
- While keeping the laptop screen-side down, carefully open the laptop. The trackpad will stay sitting on the display.
 - ❗ As you lift, make sure the trackpad cable threads through the opening on the case.

Step 14



- As you remove the trackpad assembly, be careful not to lose the five small metal washers resting on the screw posts. (They will fly off and get lost with very little provocation.)
 - Remove the trackpad.
- ⚠ Take extra care to not scratch the display.

Step 15 — Remove the trackpad cable



- ⓘ If your replacement trackpad comes with a trackpad cable preinstalled, this step isn't necessary.
- Use the flat end of a spudger to lift the small locking flap on the trackpad's ZIF connector.
 - Slide the trackpad cable straight out of the ZIF connector.

Compare your new replacement part to the original part—you may need to transfer remaining components or remove adhesive backings from the new part before installing.

To reassemble your device, follow the above steps in reverse order.

Take your e-waste to an [R2 or e-Stewards certified recycler](#).

Repair didn't go as planned? Check out our [Answers community](#) for troubleshooting help.