



MacBook Air 13" Early 2020 Touch ID Sensor Replacement

How to replace the Touch ID sensor in an Early 2020 MacBook Air.

Written By: Carsten Frauenheim



INTRODUCTION

Use this guide to replace the Touch ID sensor/power button in an Early 2020 MacBook Air.

Note that Touch ID will not function after replacing the Touch ID sensor. The MacBook's original Touch ID sensor is uniquely paired to the logic board at the factory—and without Apple's proprietary calibration process, even a genuine replacement Touch ID sensor from another MacBook Air won't work.

If you replace the Touch ID sensor, you must [install a paired logic board](#) to retain Touch ID functionality.



TOOLS:

- [T4 Torx Screwdriver](#) (1)
- [P5 Pentalobe Screwdriver Retina MacBook Pro and Air](#) (1)
- [Tweezers](#) (1)
- [Spudger](#) (1)
- [T3 Torx Screwdriver](#) (1)



PARTS:

- [MacBook Air 13" \(Early 2020\) 1.1 GHz Core i3 Logic Board with Paired Touch ID Sensor](#) (1)

Step 1 — Remove the screws securing the lower case



i Before starting this procedure, you should disable your Mac's **Auto Boot** feature. Auto Boot powers on your Mac when you open the lid, and may be accidentally triggered during disassembly. [Use this guide](#) to disable Auto Boot.

- If your MacBook is running Big Sur v11.1 or later, disabling Auto Boot may not work. You can proceed normally, but make sure to disconnect the battery as soon as you're inside.

! Completely power off and unplug your MacBook Air before you start. Close the display and flip the entire laptop upside-down.

- Use a P5 driver to remove the following screws:

- Two 7.9 mm screws
- Two 7.1 mm screws
- Six 2.6 mm screws

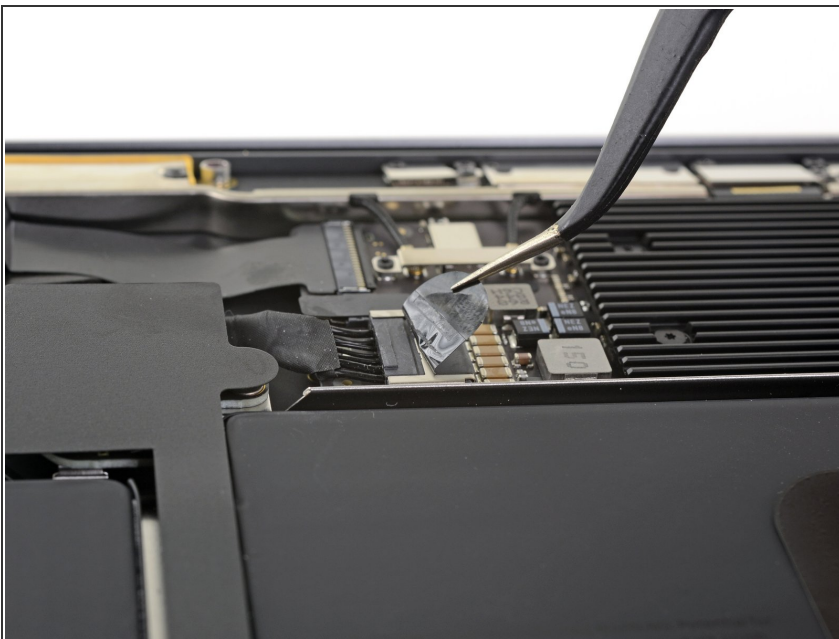
i Throughout this repair, [keep track of each screw](#) and make sure it goes back exactly where it came from to avoid damaging your MacBook.

Step 2 — Remove the lower case



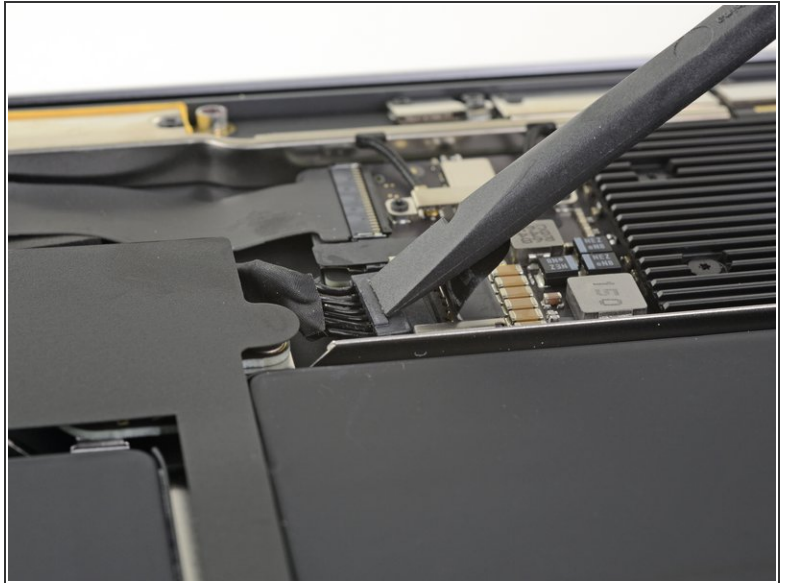
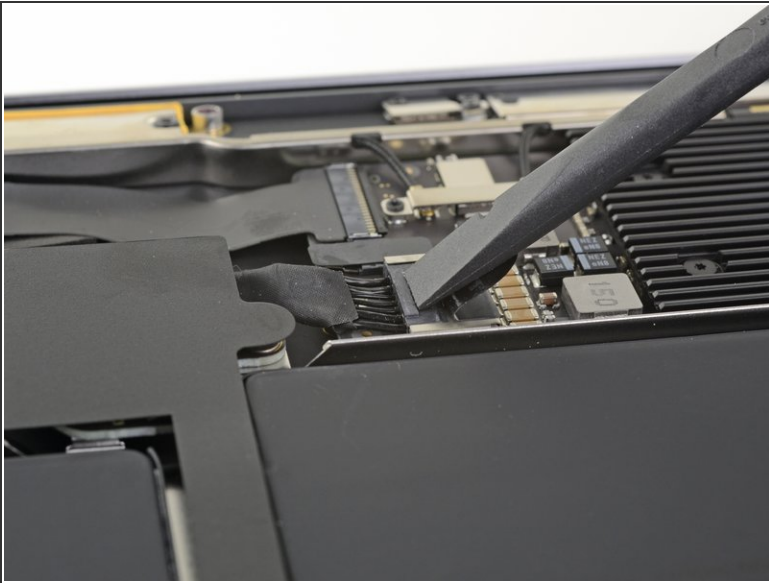
- Wedge your fingers between the display and the lower case and pull upward to pop the lower case off the Air.
 - Remove the lower case.
- ✦ To reinstall the lower case:
- Set it in place and press firmly to engage the two hidden clips underneath. You should feel and hear them snap into place.

Step 3 — Disconnect the battery



- Peel back the tape covering the battery connector enough to reveal the connector underneath.

Step 4



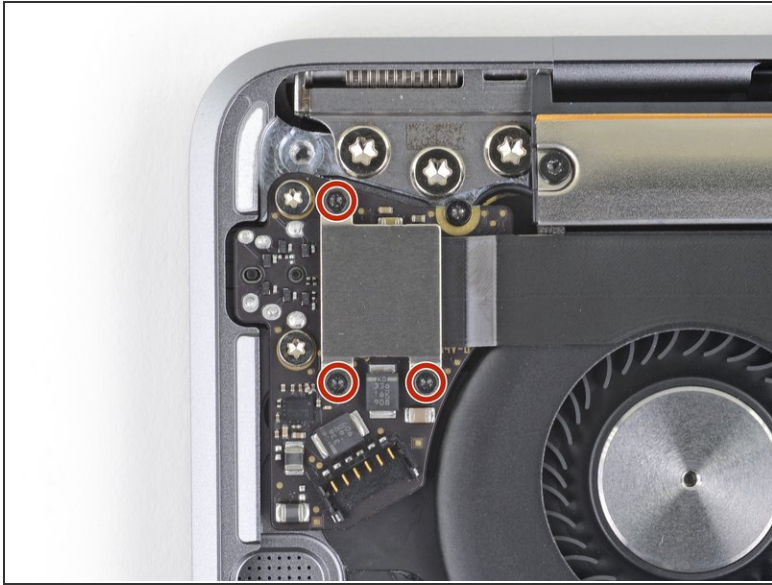
- Use a spudger to slide the battery connector parallel to the logic board and out of its socket on the logic board.

Step 5 — Disconnect the right speaker



- Slide the pointed end of a spudger underneath the speaker cable and pry straight up to disconnect it.

Step 6 — Disconnect the audio board



- Use a T4 Torx driver to remove the three 1.4 mm screws securing the audio board connector cover.
- Remove the audio board connector cover.

Step 7



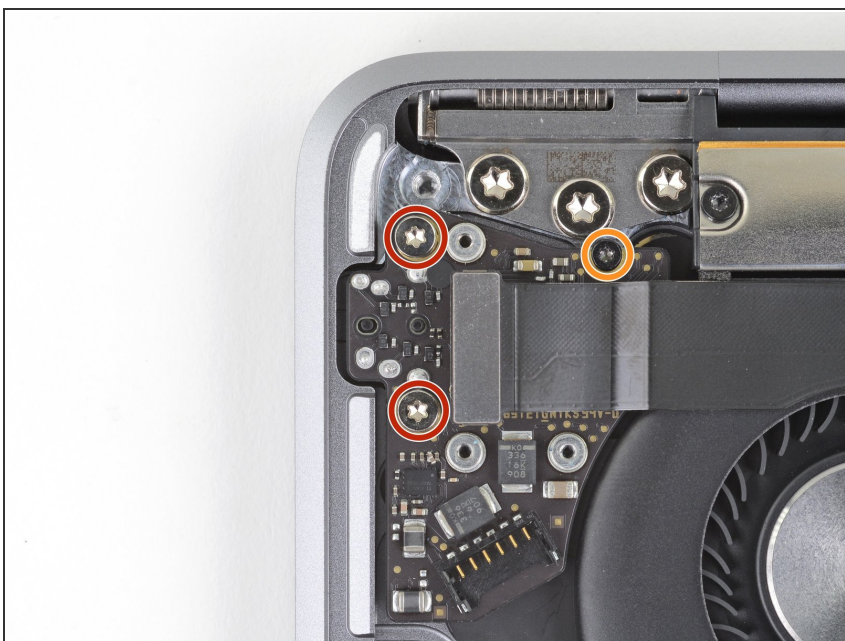
- Use the flat end of a spudger to pry the audio board connector straight up to disconnect it from the board.
- ✦ To re-attach [press connectors](#) like this one, carefully align and press down on one side until it clicks into place, then repeat on the other side. Do not press down on the middle. If the connector is misaligned, the pins can bend, causing permanent damage.

Step 8



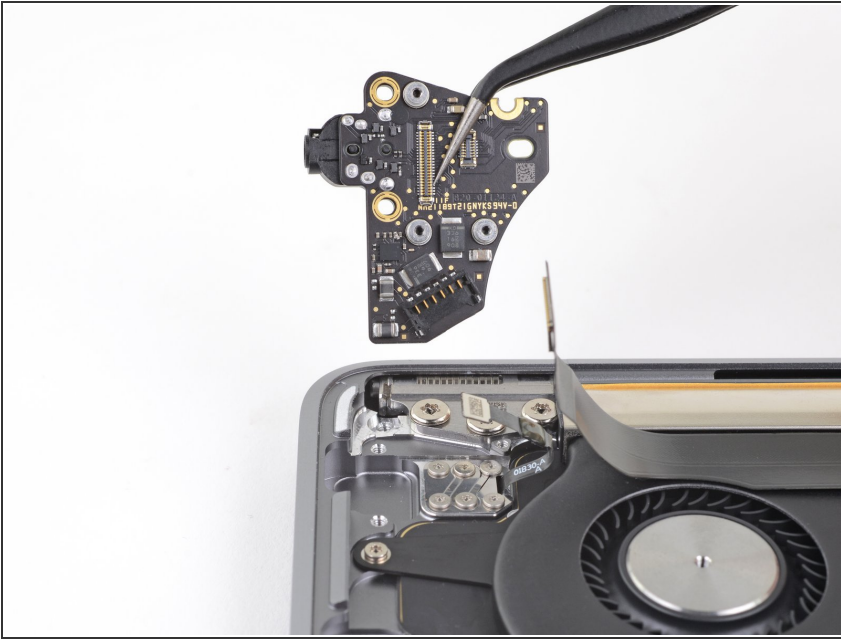
- Use the flat end of a spudger to pry the Touch ID cable straight up to disconnect it from the audio board.
- Continue to slide the spudger underneath the Touch ID cable to release it from the audio board.
- ① The Touch ID cable is secured to the audio board with some light adhesive.

Step 9 — Remove the audio board



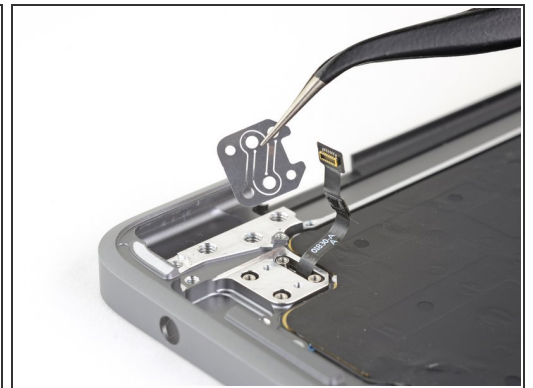
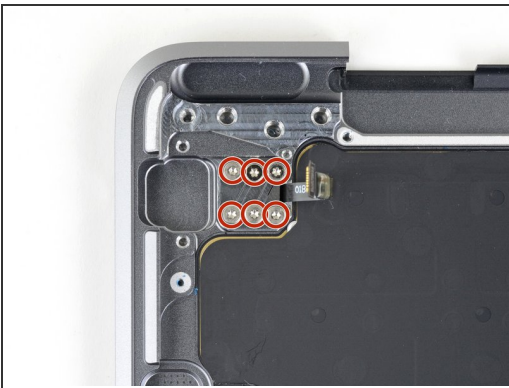
- Use a T4 Torx driver to remove the three screws securing the audio board:
 - Two 4.3 mm screws
 - One 2.4 mm screw

Step 10



- Remove the audio board.

Step 11 — Remove the Touch ID sensor bracket



- Use a T3 Torx driver to remove the six 1.6 mm screws securing the Touch ID sensor and its bracket.
- ☒ During reassembly, if you want your Touch ID button to be straight, don't tighten down the six screws until you adjust its position on the keyboard.
- Remove the Touch ID sensor bracket.

Step 12 — Remove the Touch ID sensor



- Turn the MacBook right-side up and open the display.
- Remove the Touch ID sensor.

Compare your new replacement part to the original part—you may need to transfer remaining components or remove adhesive backings from the new part before installing.

To reassemble your device, follow the above steps in reverse order.

Take your e-waste to an [R2 or e-Stewards certified recycler](#).

Repair didn't go as planned? Check out our [Answers community](#) for troubleshooting help.