



# MacBook Air 13" Early 2020 Antenna Bar Replacement

Use this guide to remove or replace the antenna...

Written By: Carsten Frauenheim



# INTRODUCTION

Use this guide to remove or replace the antenna bar in an Early 2020 MacBook Air.



## TOOLS:

- [P5 Pentalobe Screwdriver Retina MacBook Pro and Air](#) (1)
- [Tweezers](#) (1)
- [Spudger](#) (1)
- [T3 Torx Screwdriver](#) (1)
- [T4 Torx Screwdriver](#) (1)
- [T5 Torx Screwdriver](#) (1)



## PARTS:

- [MacBook Air 13" \(Late 2018-Early 2020\) Antenna Bar](#) (1)

## Step 1 — Remove the screws securing the lower case



**i** Before starting this procedure, you should disable your Mac's **Auto Boot** feature. Auto Boot powers on your Mac when you open the lid, and may be accidentally triggered during disassembly. [Use this guide](#) to disable Auto Boot.

- If your MacBook is running Big Sur v11.1 or later, disabling Auto Boot may not work. You can proceed normally, but make sure to disconnect the battery as soon as you're inside.

**⚠** Completely power off and unplug your MacBook Air before you start. Close the display and flip the entire laptop upside-down.


- Use a P5 driver to remove the following screws:

- Two 7.9 mm screws
- Two 7.1 mm screws
- Six 2.6 mm screws

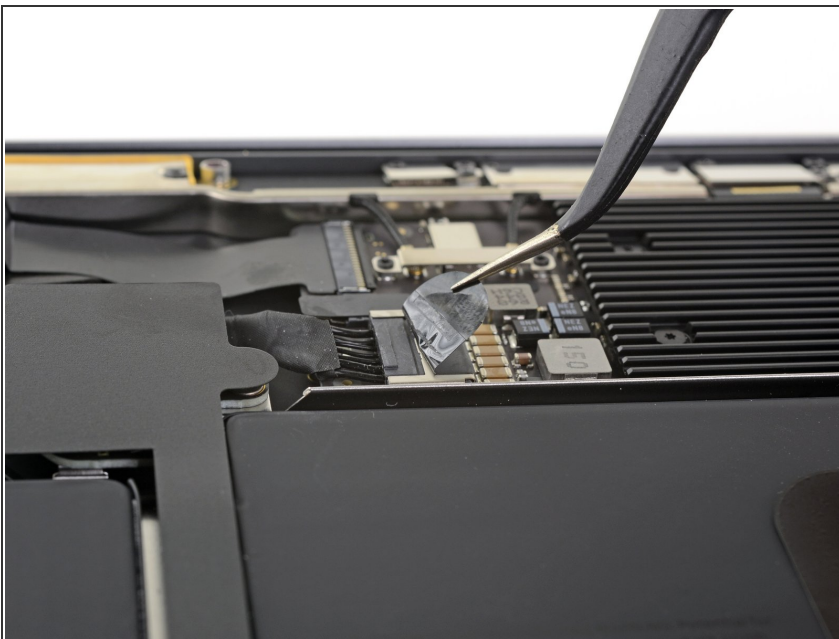
**i** Throughout this repair, [keep track of each screw](#) and make sure it goes back exactly where it came from to avoid damaging your MacBook.

## Step 2 — Remove the lower case



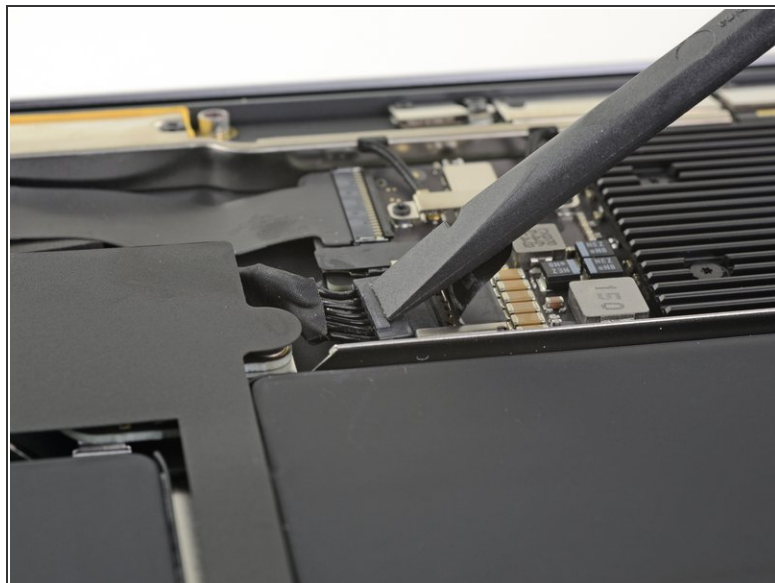
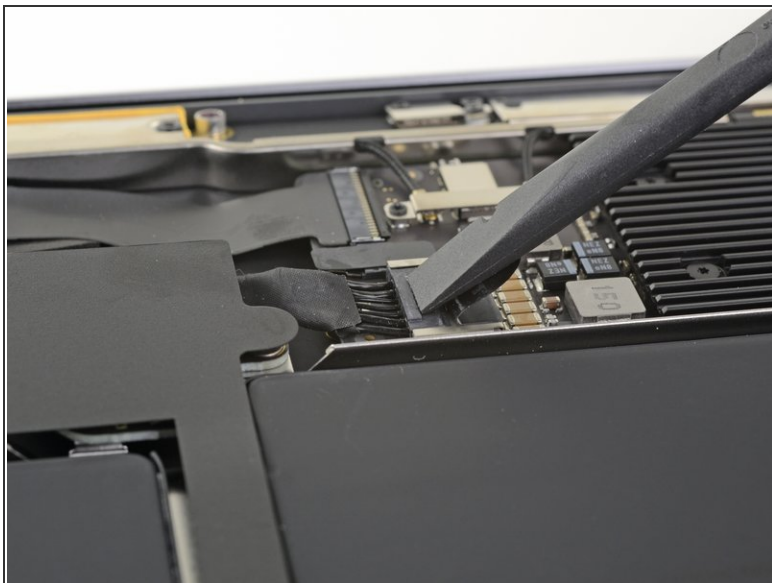
- Wedge your fingers between the display and the lower case and pull upward to pop the lower case off the Air.
  - Remove the lower case.
-  To reinstall the lower case:
- Set it in place and press firmly to engage the two hidden clips underneath. You should feel and hear them snap into place.

## Step 3 — Disconnect the battery



- Peel back the tape covering the battery connector enough to reveal the connector underneath.

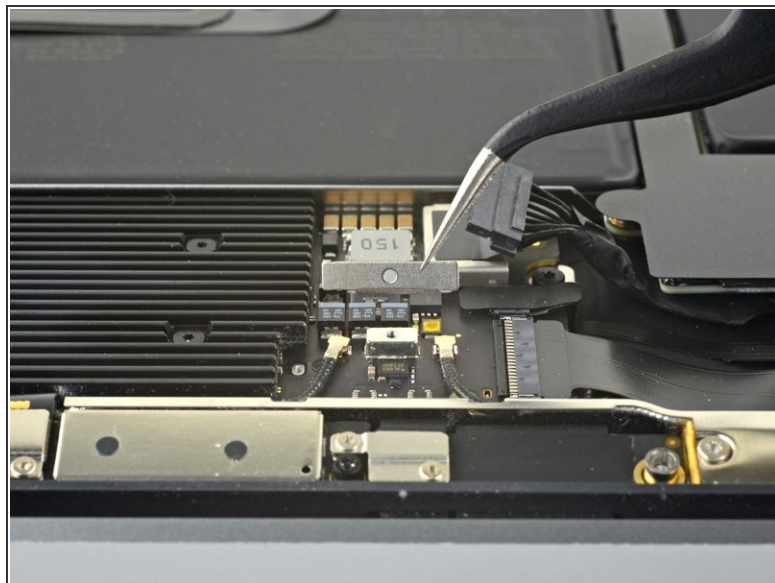
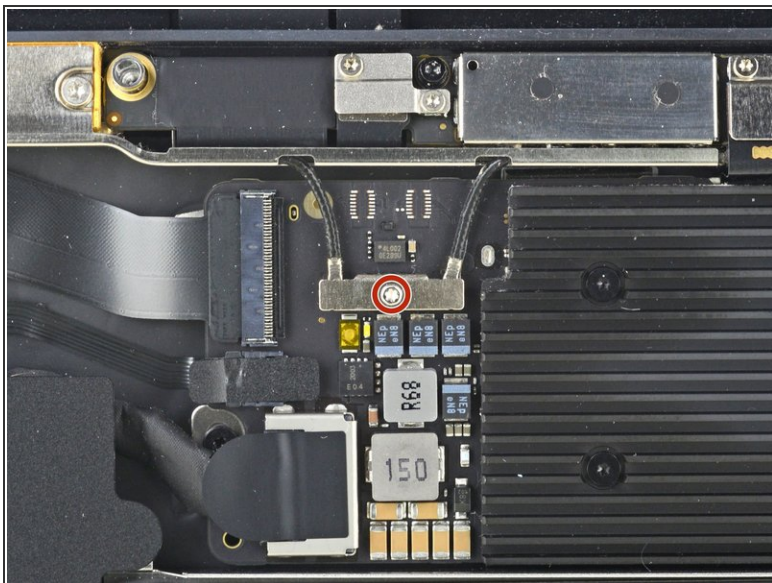
## Step 4



- Use a spudger to slide the battery connector parallel to the logic board and out of its socket on the logic board.

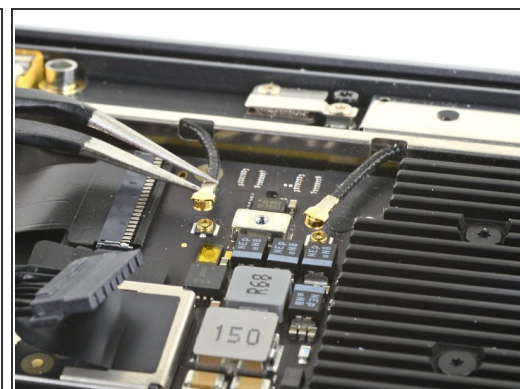
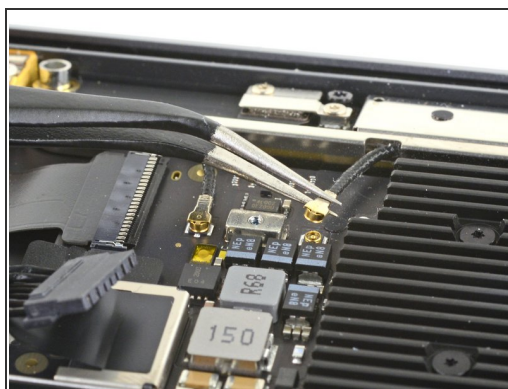
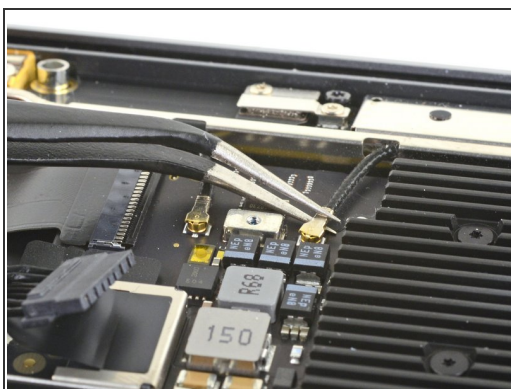


## Step 5 — Disconnect the antenna bar



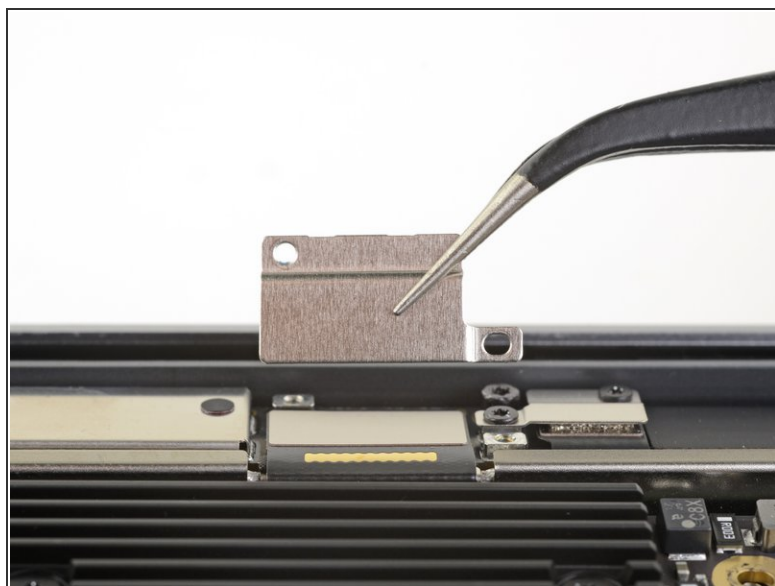
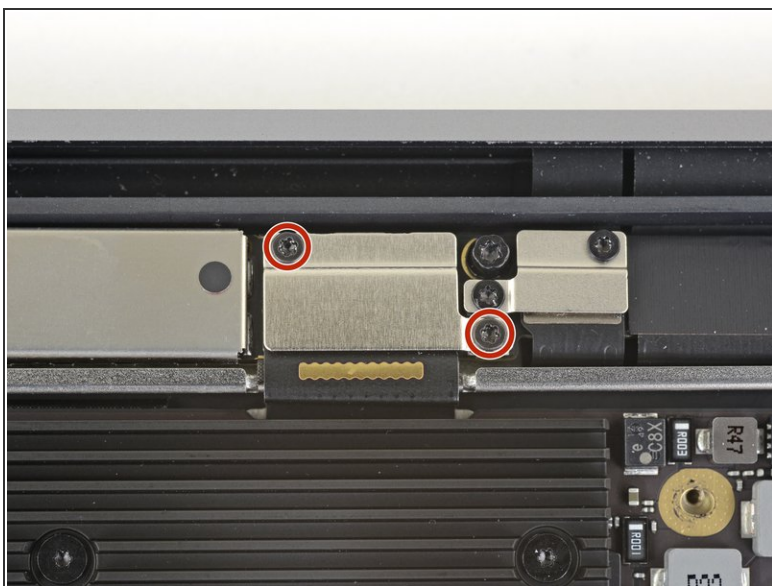
- Use a T3 Torx driver to remove the 1.4 mm screw securing the antenna cable cover.
- Remove the antenna cable cover.
- ☑ When replacing the antenna cable cover, make sure the keyed side goes towards the hinge edge of the MacBook Air.

## Step 6



- Use a pair of tweezers to grip the antenna connector close to its base.
- Pull straight up to disconnect the cable.
- Repeat for the second antenna cable.

## Step 7



- Use a T3 Torx driver to remove the two 1.5 mm screws securing the display cable connector cover.
- Remove the display cable connector cover.

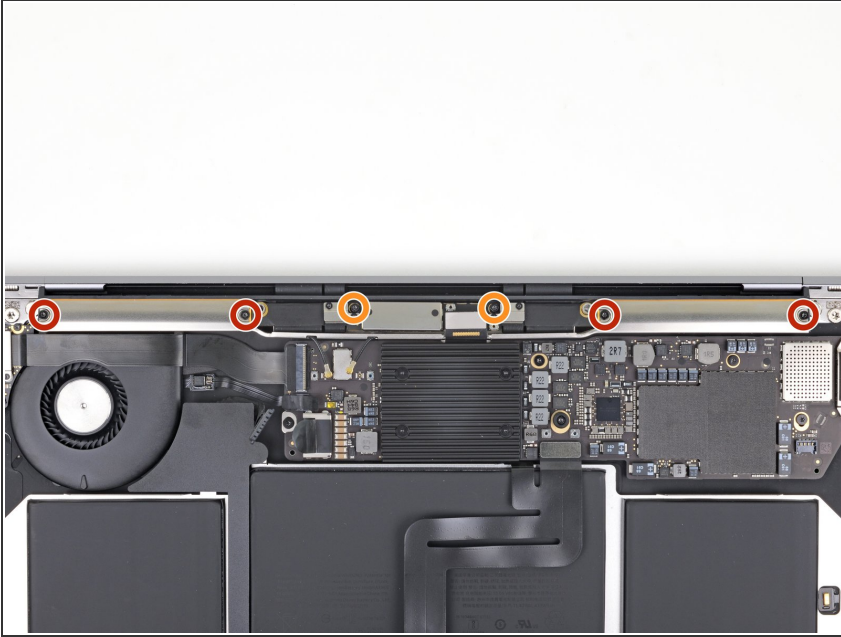
## Step 8



- Use the flat end of a spudger to pry the display cable connector straight off of the antenna board to disconnect it.
- ✦ To re-attach [press connectors](#) like this one, carefully align and press down on one side until it clicks into place, then repeat on the other side. Do not press down on the middle. If the connector is misaligned, the pins can bend, causing permanent damage.

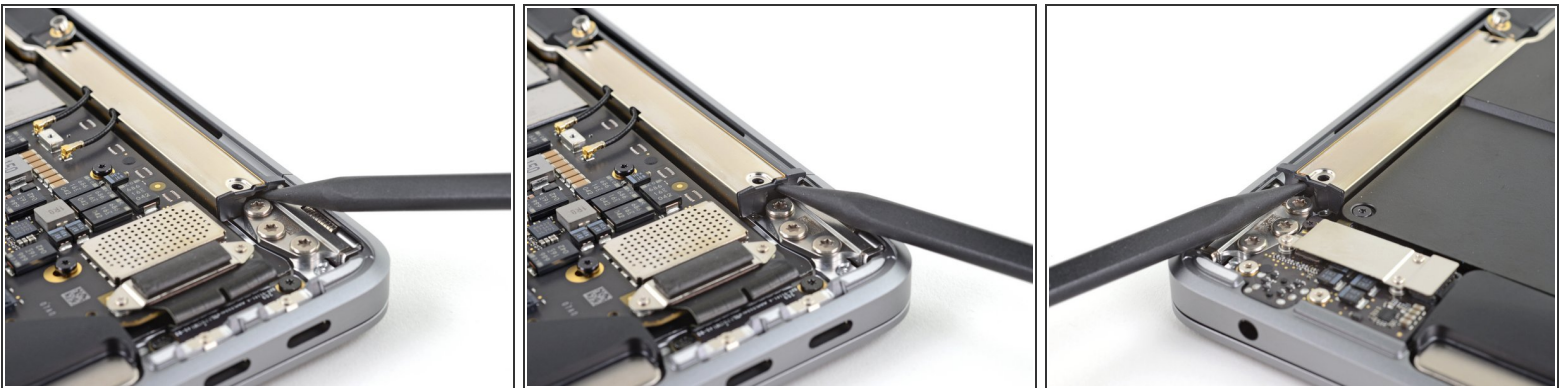


## Step 9



- Use a T5 Torx driver to remove the six screws securing the antenna bar:
  - Four 7.4 mm screws
  - Two 4.5 mm screws

## Step 10 — Remove the antenna bar



- Insert the pointed end of a spudger into the gap between the antenna bar and display hinge.
- Pivot the spudger against the hinge to pry up the end of the antenna bar.
- Repeat for the other end of the antenna bar.

## Step 11



- Use your fingers to pry the antenna bar straight up and away from the case.
    - ❗ The antenna bar is secured with some light adhesive and may require some force to dislodge.
  - Thread the antenna board through the opening in the middle of the antenna bar.
    - ⚠ Be careful to not put any strain on the antenna bar's ribbon cables.
  - Remove the antenna bar.
- ✦ During reassembly, ensure that the display cable doesn't become trapped underneath the antenna bar.

Compare your new replacement part to the original part—you may need to transfer remaining components, cable covers, or remove adhesive backings from the new part before installing.

**To reassemble your device, follow the above steps in reverse order.**

Take your e-waste to an [R2 or e-Stewards certified recycler](#).

Repair didn't go as planned? Check out our [Answers community](#) for troubleshooting help.