



# MacBook Air 13" Late 2020 Trackpad Replacement

Use this guide to replace a faulty trackpad in...

Written By: Carsten Frauenheim



# INTRODUCTION

Use this guide to replace a faulty trackpad in a Late 2020 MacBook Air (M1).

---



## TOOLS:

[P5 Pentalobe Screwdriver Retina MacBook Pro and Air](#) (1)

[Spudger](#) (1)

[T5 Torx Screwdriver](#) (1)

[Tweezers](#) (1)

[T3 Torx Screwdriver](#) (1)

[T4 Torx Screwdriver](#) (1)



## PARTS:

[MacBook Air 13" \(A2337, Late 2020\) Trackpad](#) (1)

## Step 1 — Remove the screws securing the lower case



**i** Before starting this procedure, you should disable your Mac's **Auto Boot** feature. Auto Boot powers on your Mac when you open the lid, and may be accidentally triggered during disassembly. [Use this guide](#) to disable Auto Boot.

- If your MacBook is running Big Sur v11.1 or later, disabling Auto Boot may not work. You can proceed normally, but make sure to disconnect the battery as soon as you're inside.

**⚠** Completely power off and unplug your MacBook before you start. Close the display and flip the entire laptop upside-down.

- Use a P5 driver to remove the following screws:
  - Two 7.9 mm screws
  - Two 7.3 mm screws
  - Six 2.6 mm screws

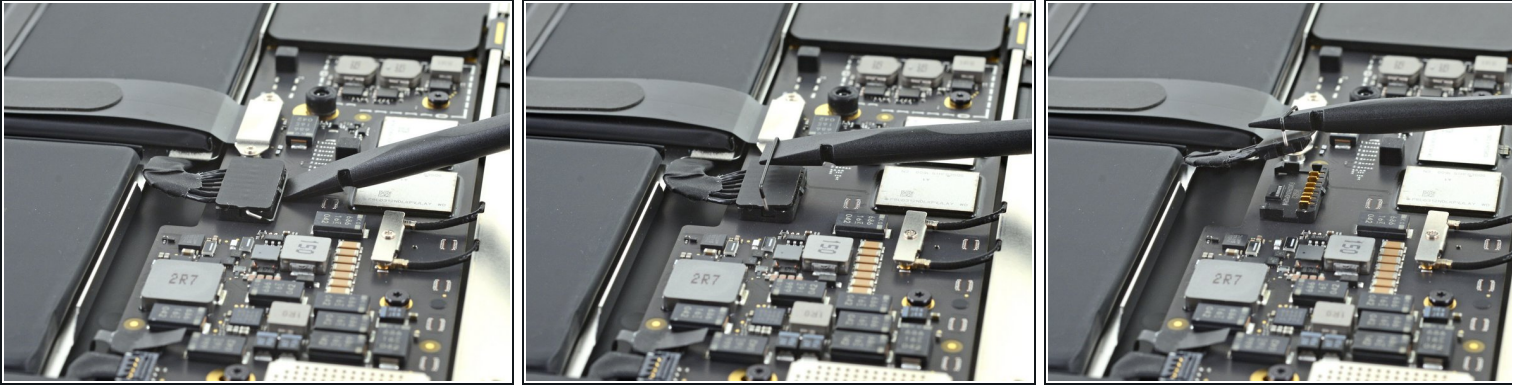
**i** Throughout this repair, [keep track of each screw](#) and make sure it goes back exactly where it came from to avoid damaging your MacBook.

## Step 2 — Remove the lower case



- Wedge your fingers between the display and the lower case and pull upward to pop off the lower case.
  - Remove the lower case.
- ☛ To reinstall the lower case:
- Set it in place and press firmly to engage the two hidden clips underneath. You should feel and hear them snap into place.

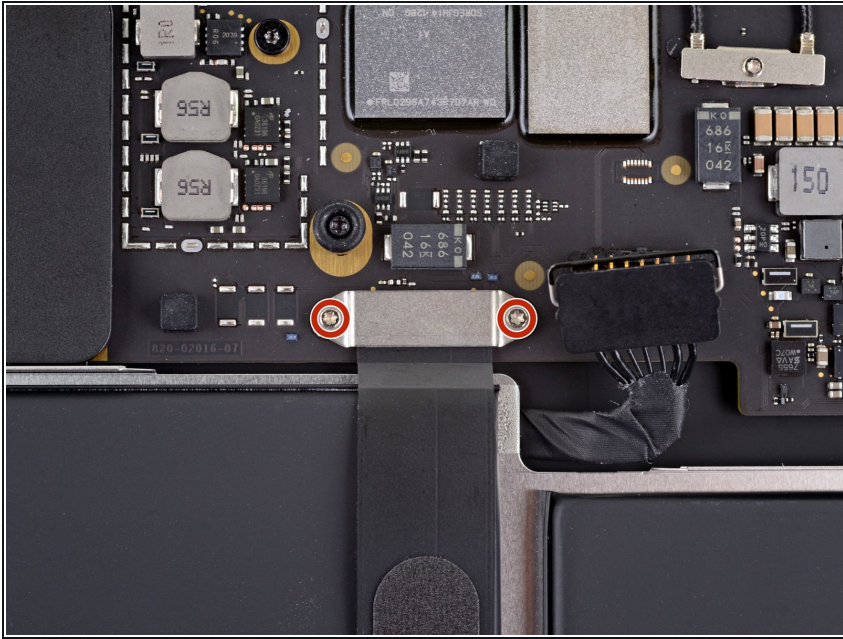
### Step 3 — Disconnect the battery



- Use the flat end of a spudger to pry up and unlatch the metal locking arm on the battery connector.
- ⚠ Make sure the metal arm is completely free of the locking tab before lifting the battery connector. The metal locking arm should easily unlatch.
- Lift straight up on the metal locking arm to pull the battery connector out of its socket on the logic board.
- ★ During reassembly, press the battery connector straight down into its socket, making sure it sits flush within the socket.
- If necessary, push the rear, wire side of the connector into place first, then rock the front of the connector into place.

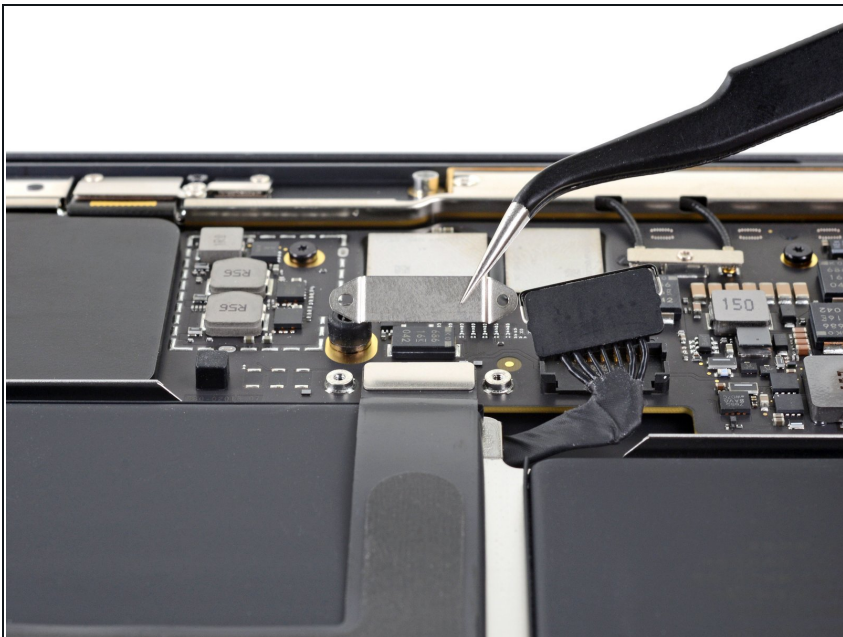


## Step 4 — Remove the trackpad cable cover



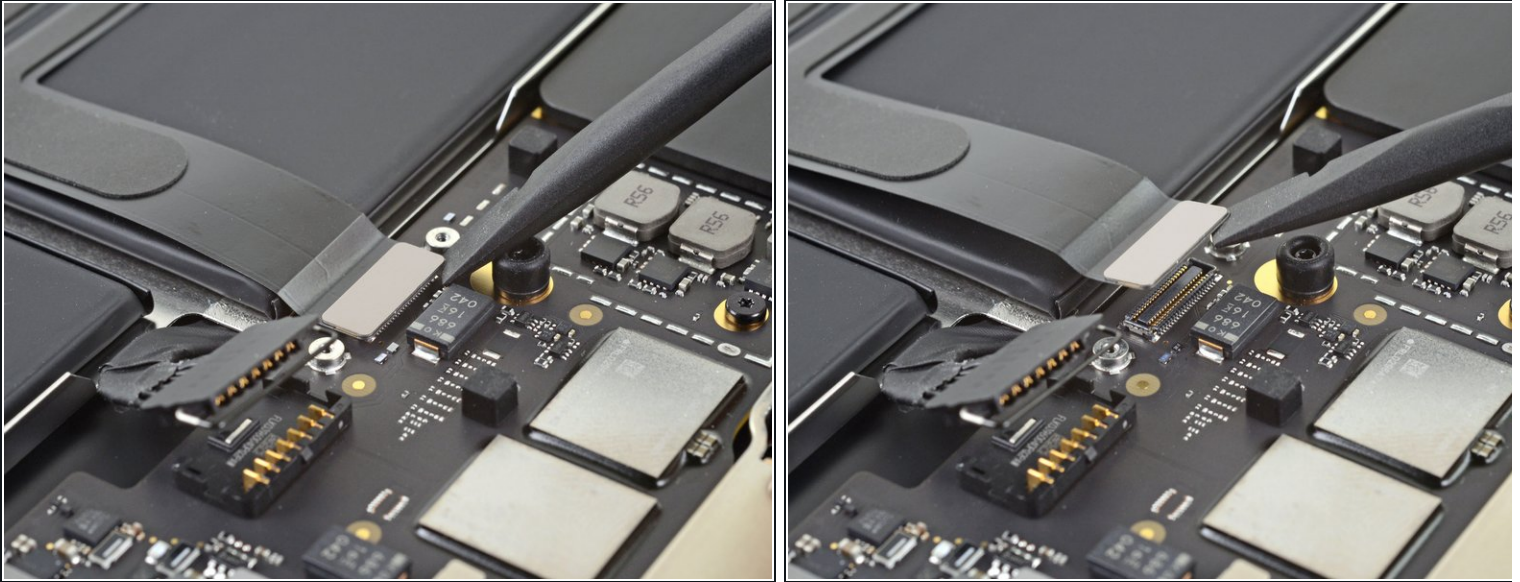
- Use a T3 Torx driver to remove the two 1.4 mm screws securing the trackpad cable cover.
- ⓘ If your T3 bit feels a bit too loose, you may need to use a T4.

## Step 5



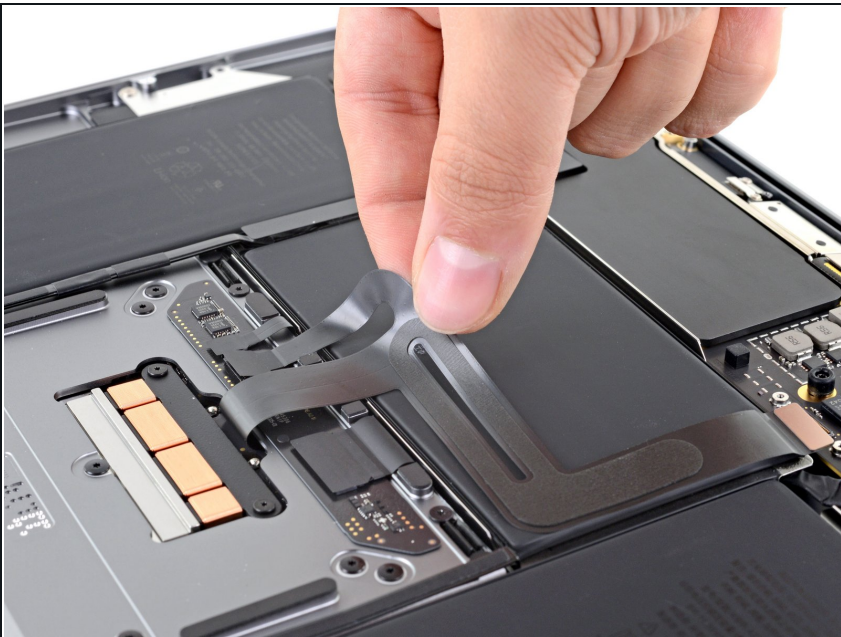
- Remove the trackpad cable cover.

## Step 6 — Disconnect the trackpad cable



- Use the flat end of a spudger to pry the trackpad cable connector up and out of its socket.

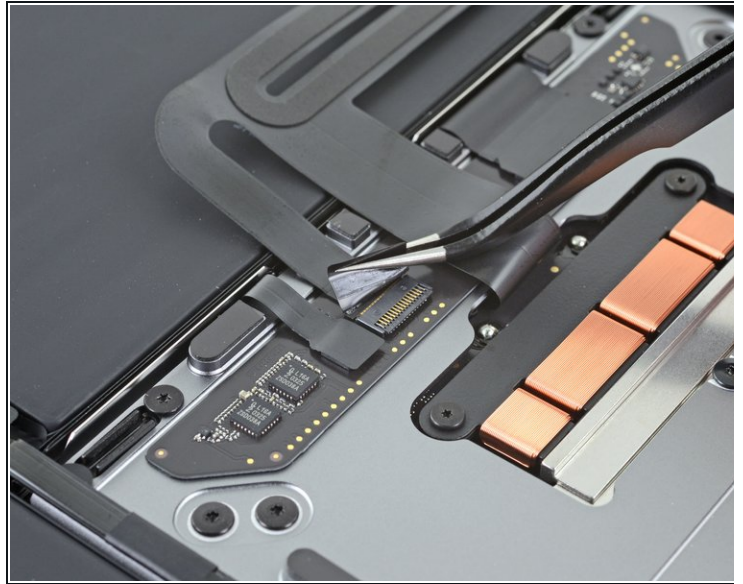
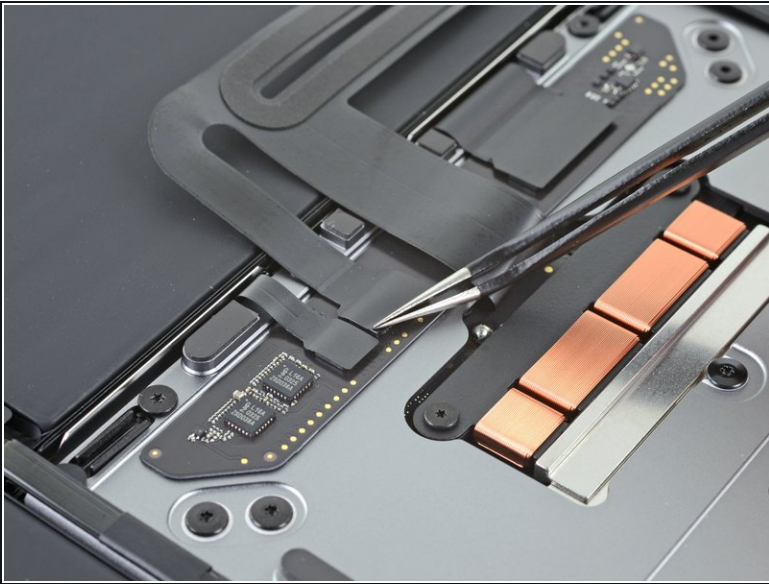
## Step 7



- Carefully peel the trackpad cable off of the battery.
- ⓘ The trackpad cable is secured to the battery with some light adhesive.

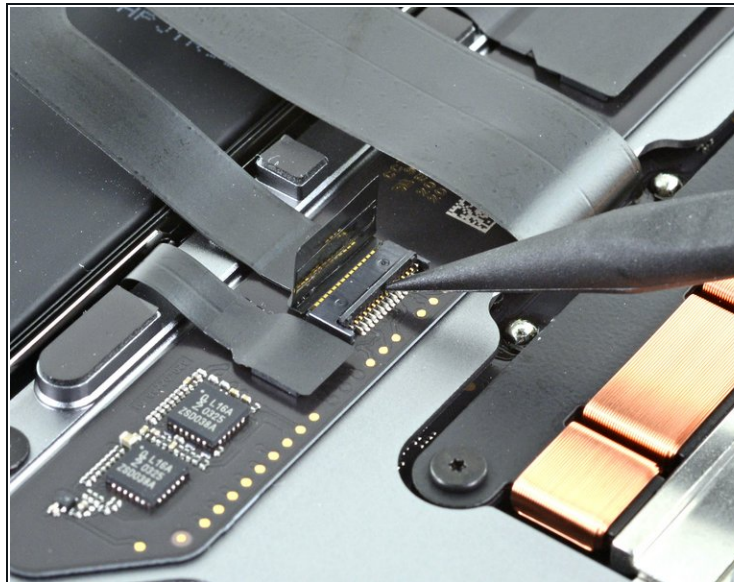
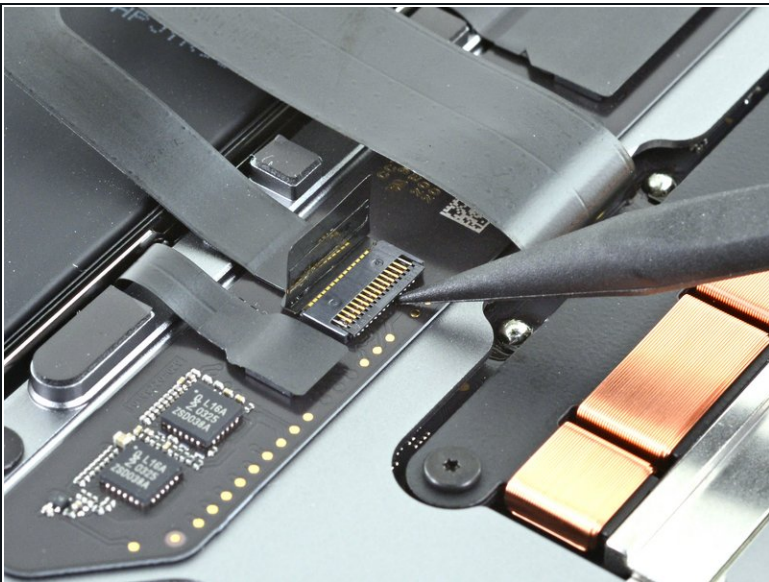


## Step 8 — Disconnect the trackpad cable



- Use a pair of tweezers to peel back the tape covering the trackpad cable connector.

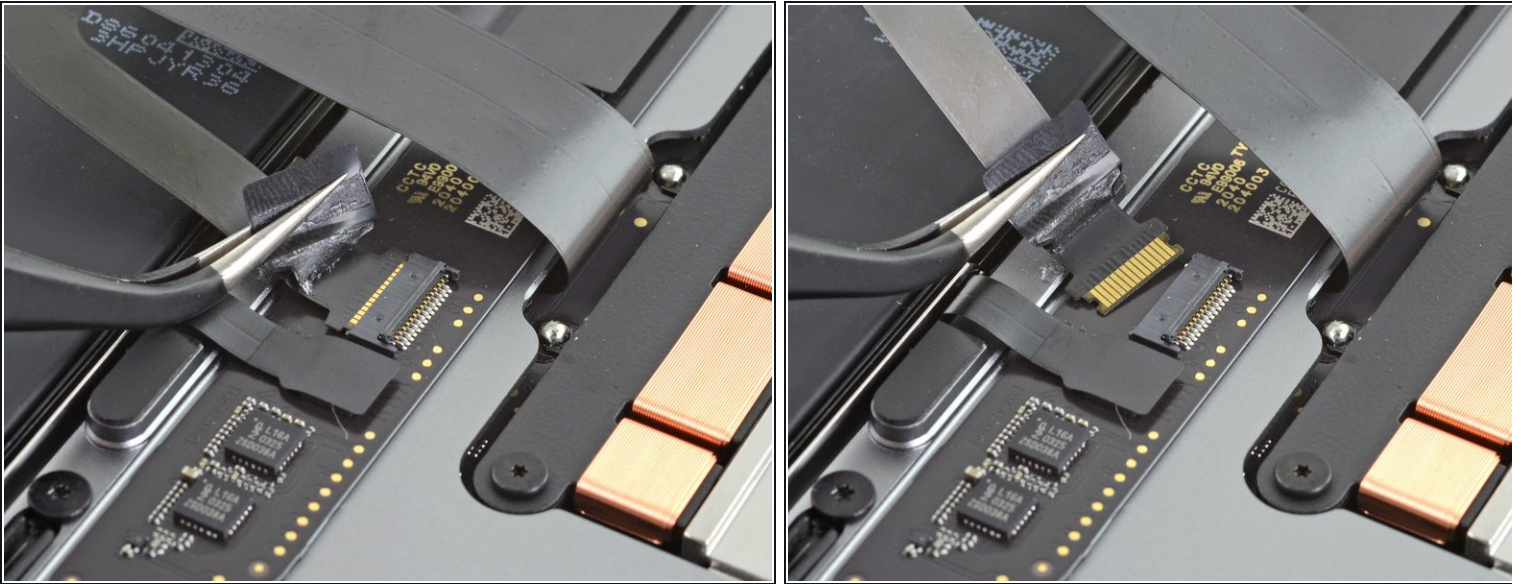
## Step 9



- Use the pointed end of a spudger to lift up the small locking flap on the trackpad cable's [ZIF connector](#).

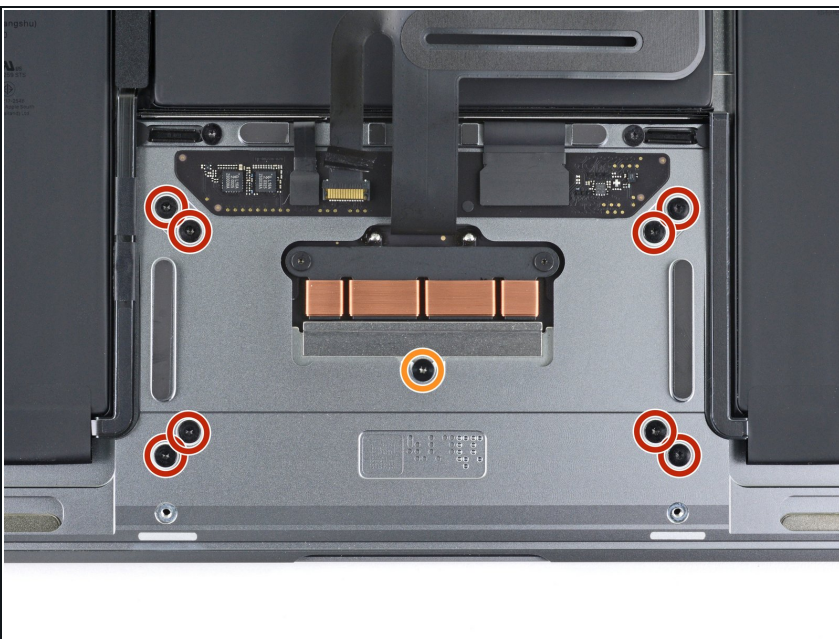


## Step 10



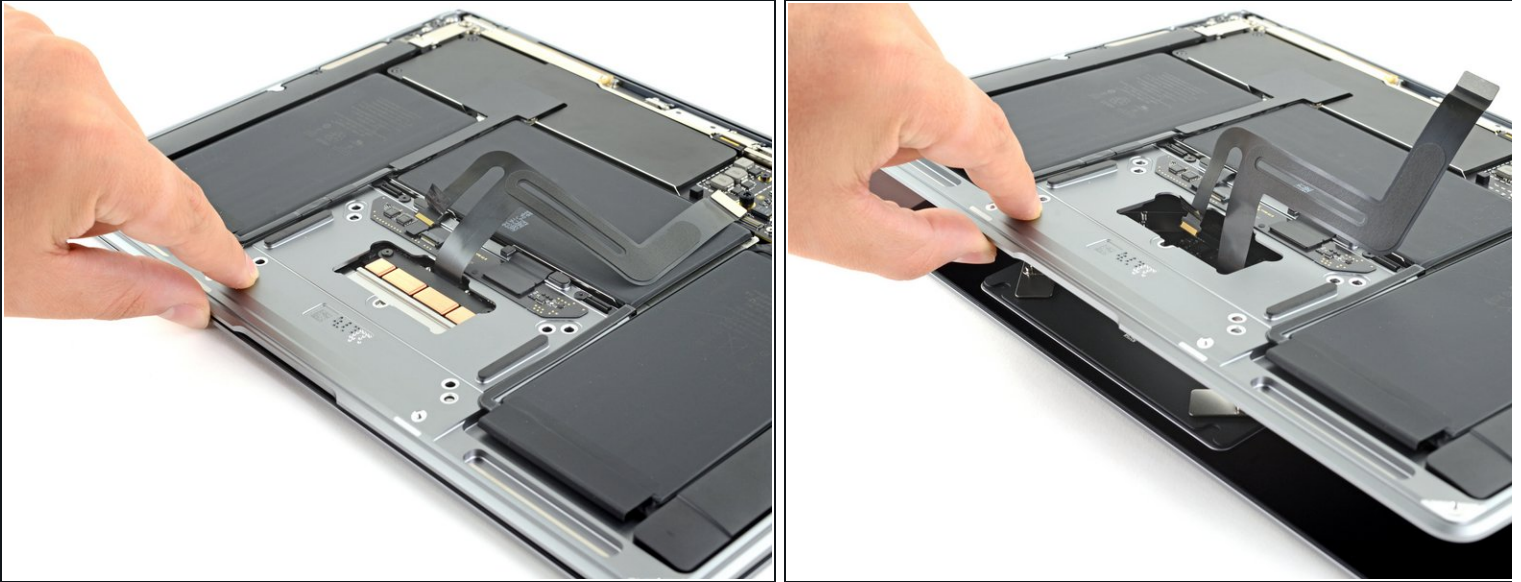
- Slide the cable out of its connector.
- ❗ If possible, grip the cable by the tape, not by the cable itself.

## Step 11 — Remove the trackpad screws



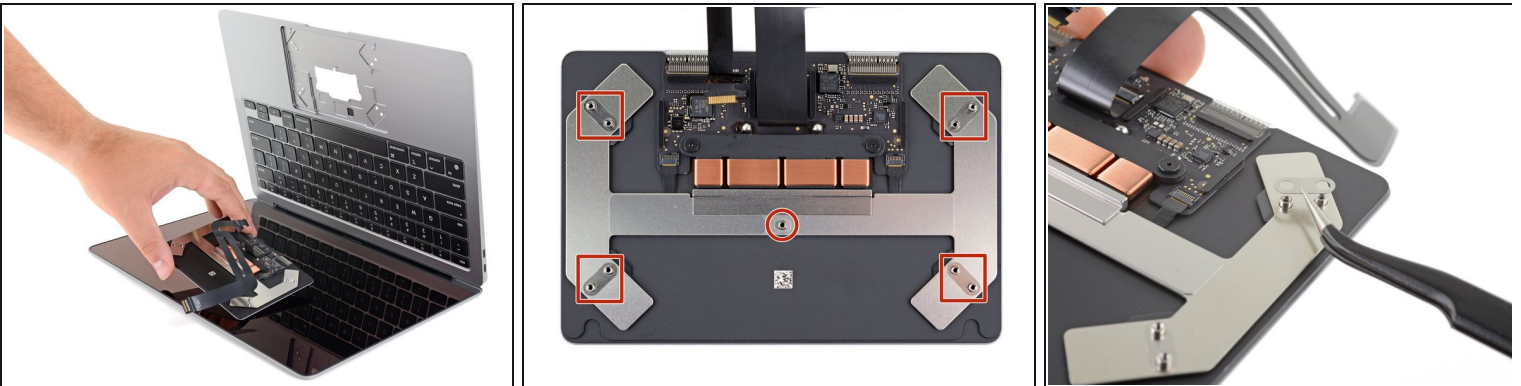
- Use a T5 Torx driver to remove the nine screws securing the trackpad:
  - Eight fully-coated 3.1 mm screws
  - One partially-coated 3.1 mm screw

## Step 12 — Remove the trackpad



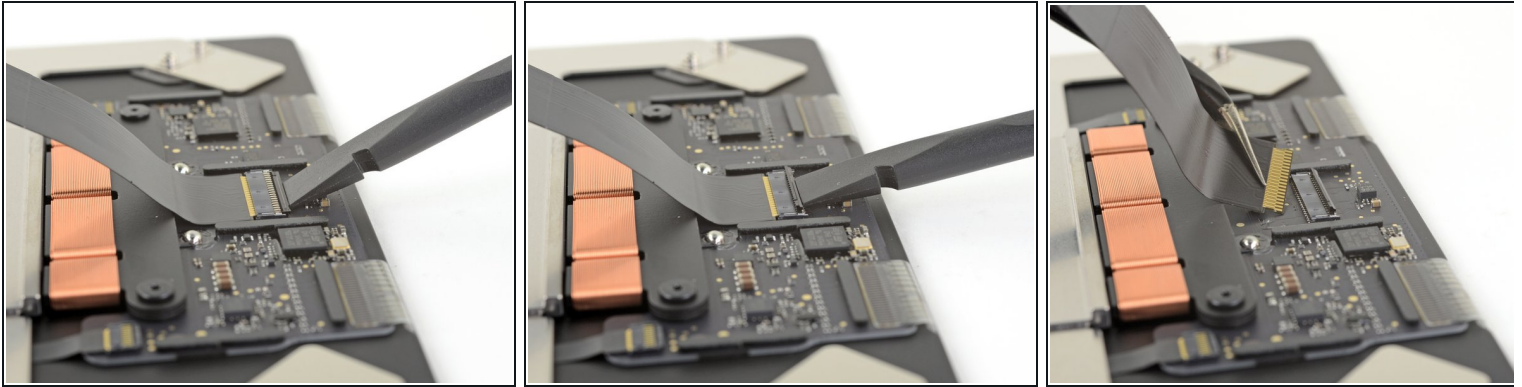
- While keeping the laptop screen-side down, carefully open the laptop. The trackpad will stay sitting on the display.
- ⓘ As you lift, make sure the trackpad cable threads through the opening on the case.

## Step 13



- As you remove the trackpad assembly, be careful not to lose the five small metal washers resting on the screw posts. (They will fly off and get lost with very little provocation.)
- Remove the trackpad.
- ⚠ Take extra care to not scratch the display.

## Step 14 — Remove the trackpad cable



**i** If your replacement trackpad comes with a trackpad cable preinstalled, this step isn't necessary.

- Use the flat end of a spudger to lift the small locking flap on the trackpad's ZIF connector.
- Slide the trackpad cable straight out of the ZIF connector.

Compare your new replacement part to the original part—you may need to transfer remaining components or remove adhesive backings from the new part before installing.

**To reassemble your device, follow the above steps in reverse order.**

**Once you've completed your repair, your laptop may not power back on until connected to power.**

Take your e-waste to an [R2 or e-Stewards certified recycler](#).

Repair didn't go as planned? Check out our [Answers community](#) for troubleshooting help.