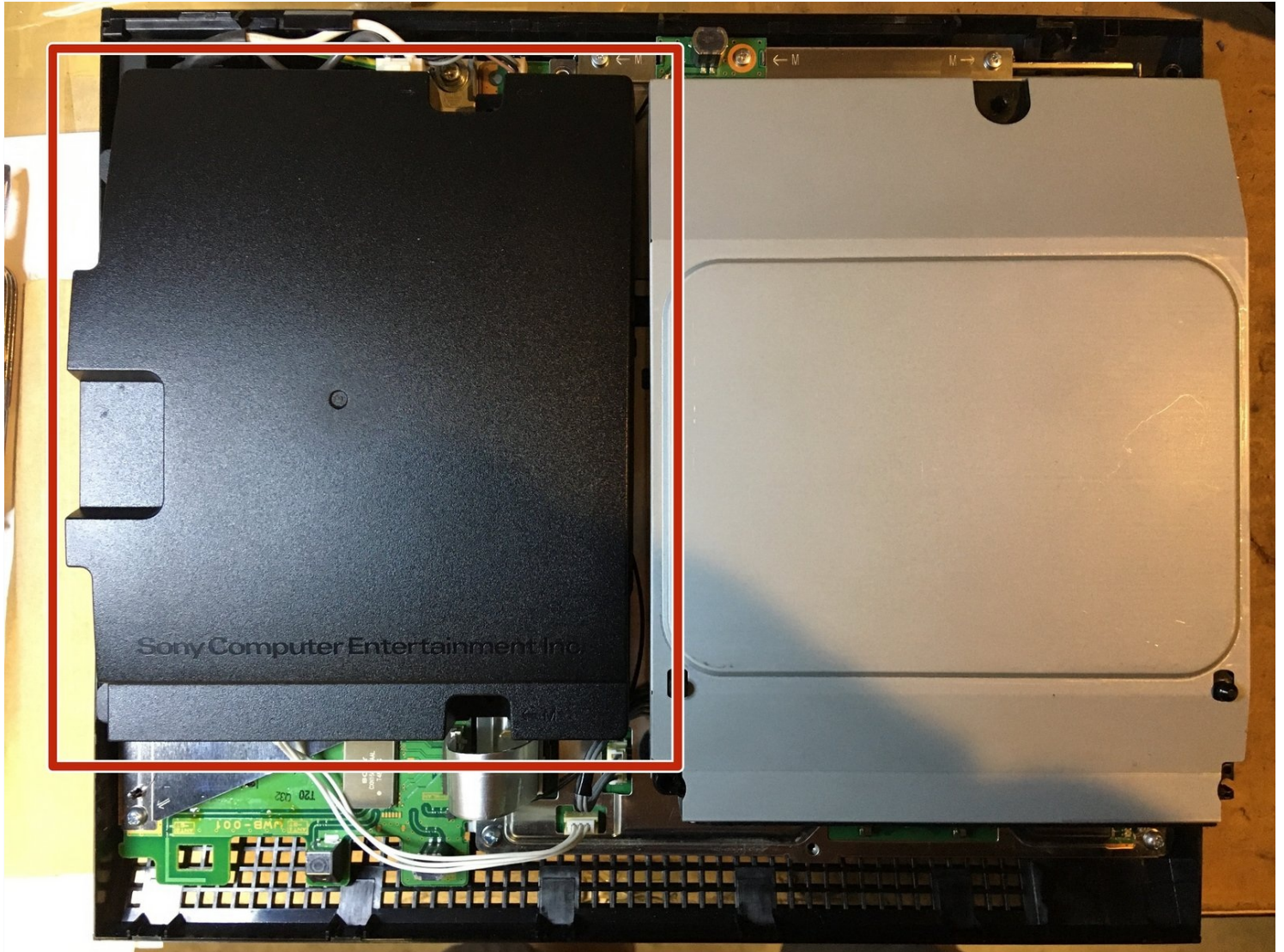




# PlayStation 3 CECHH01 Power Supply Disassembly

In the course of servicing your PS3, you may...

Written By: [gordonhamachi](#)



# INTRODUCTION

In the course of servicing your PS3, you may wish to open the black plastic power supply to inspect the components. If like me you can't immediately figure out how to open the power supply, this guide is for you.

This guide begins with a complete teardown of Playstation 3. **After you finish steps 1-7 of this guide, by removing the power supply, you may skip to step 12 to finish the disassembly of the power supply.**

---

## 🔧 TOOLS:

T8 Torx Security Bit Screwdriver (1)  
Phillips #1 Screwdriver (1)  
Phillips #2 Screwdriver (1)

## ⚙️ PARTS:

Sony PlayStation 3 CECHG Power Supply (1)

---

## Step 1 — Remove HDD



- Using fingernail, or spudger, remove the cover.
- Remove PH1 screw
- Pull HDD out.

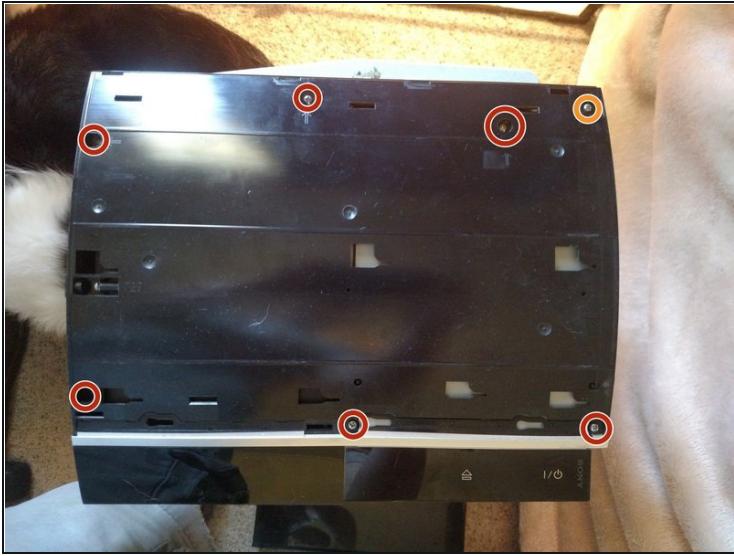
## Step 2 — Remove security screw



- Remove sticker and underlying rubber tab
- Remove the T8 security screw
- Pull cover towards you to remove

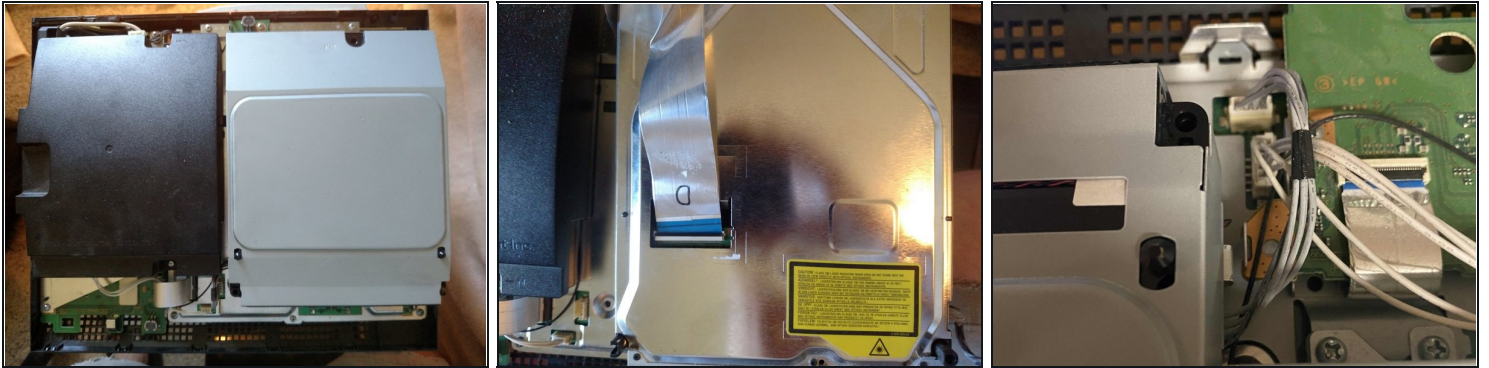


### Step 3



- Remove the 6 long medium screws
- Remove the medium medium screw. This screw is conveniently marked with an S if you forget what goes where.
- ⚠ The blueray drive is NOT screwed down. Do not tip the console!
- Use a finger to press the tab next to the medium length screw and lift. The case pivots on the front.
- When putting back together, place the front edge and rotate back. The screws will pop everything back in place.

## Step 4 — Remove Blu-ray drive



- Flip the Blu-Ray drive over and lift the black tab to remove the ribbon cable.
- Disconnect the 4 pin cable attached to the Blu-Ray drive.

## Step 5 — Remove power supply screws

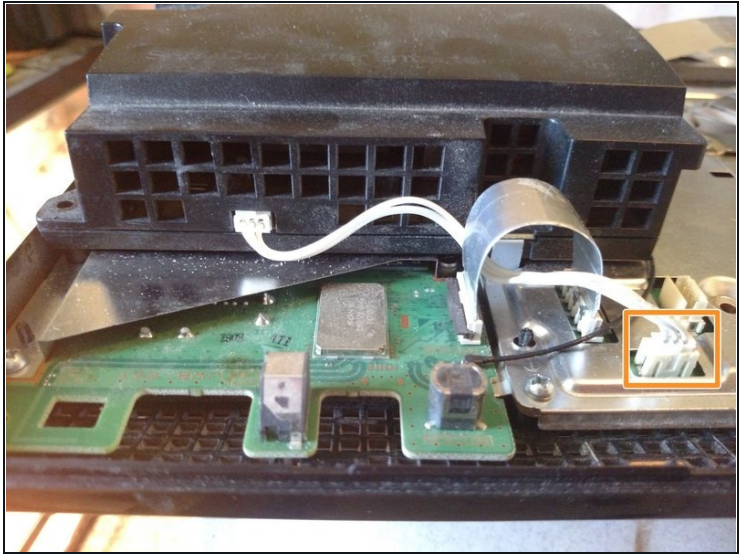


- Remove M screw
- Remove medium medium screws
- Remove long M screws

① When putting back together, the fine thread screws are marked with M.



## Step 6 — Unhook power supply



- Push down on tab and pull straight out
- Pull straight out

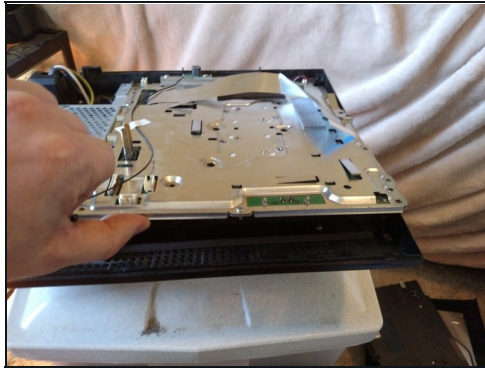
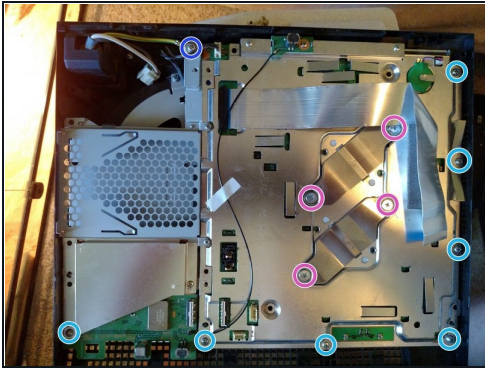
## Step 7 — Remove power supply



⚠ Do not use a metal spudger!  
There are exposed prongs that may short and shock you. I did not know this when I did it.

- Using something non-conductive, lift this corner up to make removal easier.
- Pull straight up to remove the power supply.

## Step 8 — Unscrew the board brace



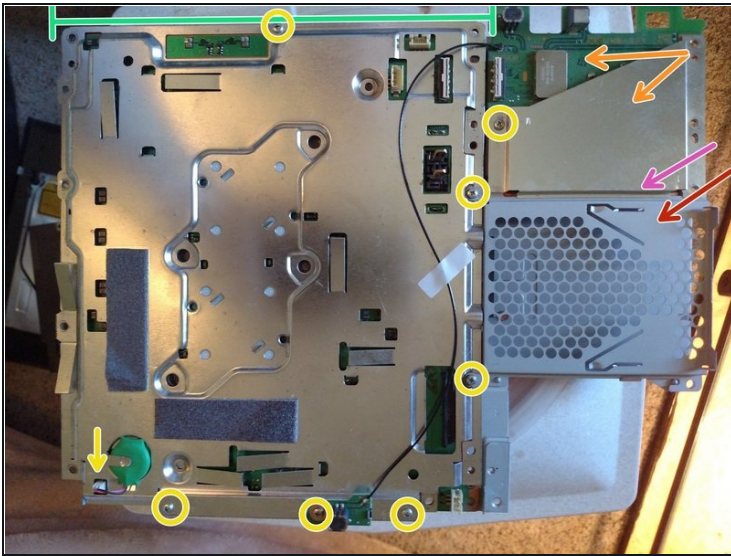
- Remove the short medium screws
- Remove the ground screw
- Remove the heatsink screws and braces
- Lift the front to remove

**⚠ Do this slowly. The heatsinks are not screwed down and you may damage the fins if you use too much force.**

- ① This is the second time I've taken this apart. That's why there is no thermal paste on the chips. They do put paste on there. Too much in my opinion.
- ① When putting back together, all the screw places are marked. If the hole doesn't have a marker, don't put a screw in it.



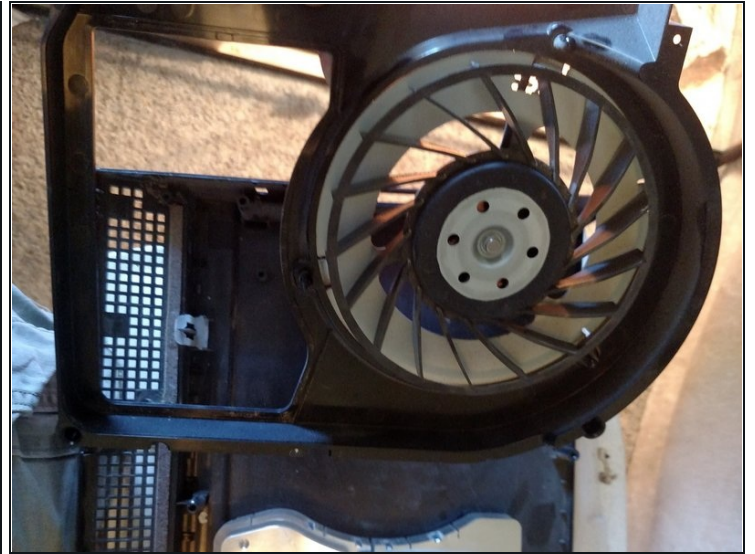
## Step 9 — Remove the shields



- Unscrew the M screws and unplug the board battery. Your PS3 now does not know the date and time.
- I messed up when I put it back together. The shield goes under the top half of the HDD cage.
- Lift this side of the HDD cage and wiggle it. The pins can be tricky.
- Remove the shield over the USB and WiFi controller
- Remove the USB and WiFi controller. It lifts straight up. Remove the white tape.
- Lift from this side to remove the motherboard shield.
- The motherboard lifts right out



## Step 10



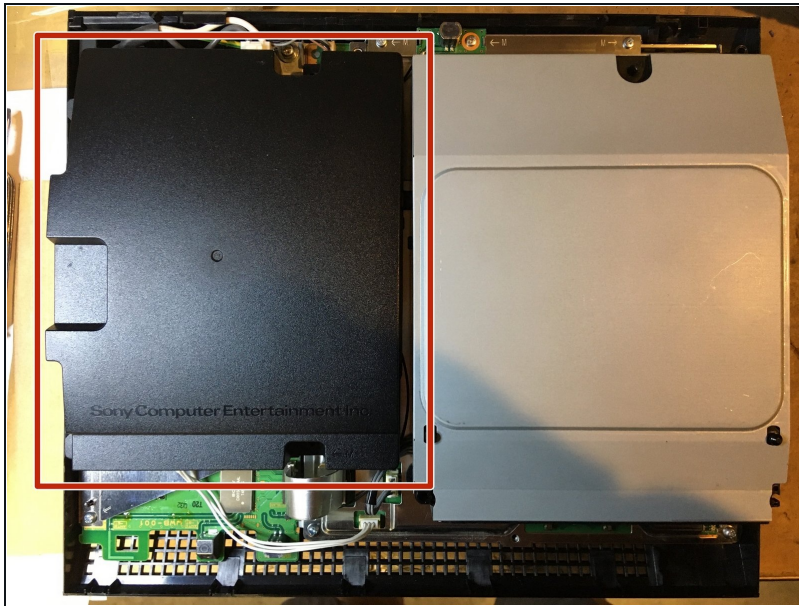
- Ok, I forgot to take a picture before unscrewing the bottom. There are 4 small medium screws.
- The back plate lifts up
- The fan and cover lifts straight up
- The heatsinks are not screwed down and lift right out

## Step 11 — Done



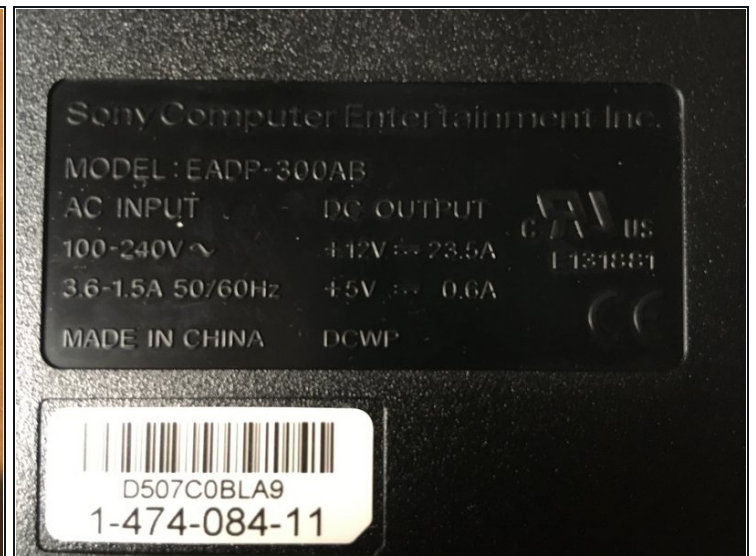
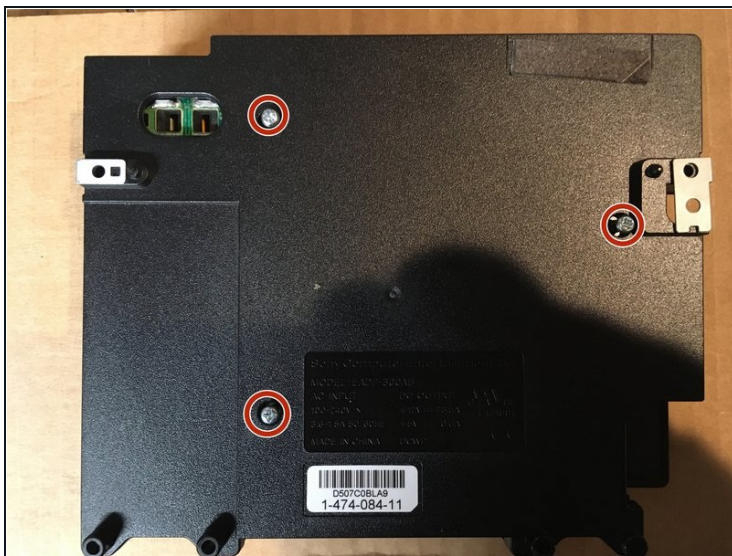
- Insert wisdom here.

## Step 12 — Follow steps 1-7 continue from here.



- After completing step 7 of that guide, remove the power supply and continue from this step.

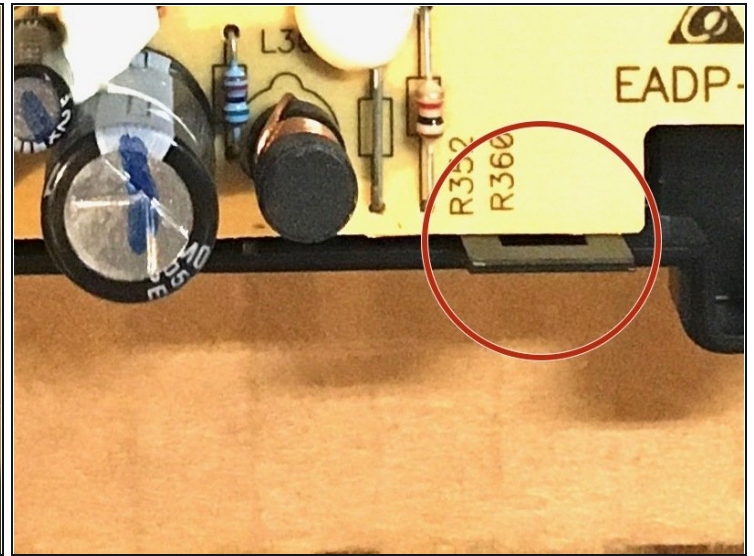
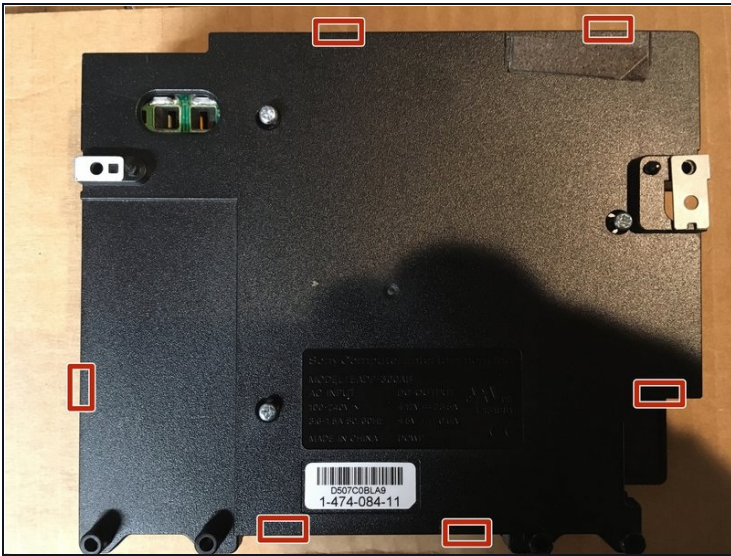
## Step 13 — Remove 3 Bottom Screws



- Remove 3 Phillips screws from the bottom of the power supply. These hold together the upper and lower halves of the plastic power supply case.

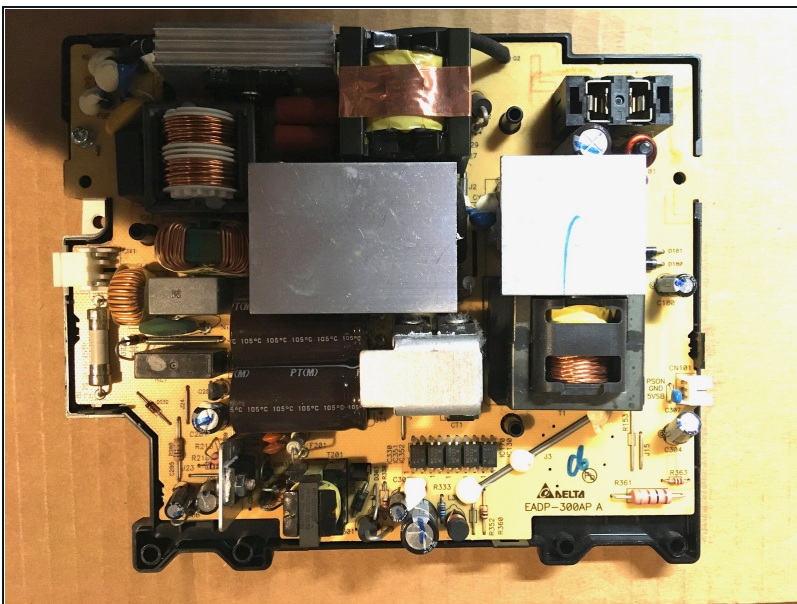


## Step 14 — Release 6 Latches



- After removing the three screws, the power supply's plastic case is still secured by six plastic hooks and latches around the perimeter seam. It takes some doing, but if you carefully pry around the edges you can eventually release all of these without breaking any plastic.
- Even if you do break some of the plastic latches, the case is still held together securely by the three screws that you previously removed.

## Step 15 — Inspect the Components



- The circuit board is now revealed in all its glory.
- Inspect for bulging or leaking electrolytic capacitors, or obviously burned components.
- A small tubular fuse is soldered into the circuit board near the left edge of the photo. Be sure to replace it if there is no continuity.

---

To reassemble your device, follow these instructions in reverse order.