



# Sliding Folding Door Hinge Replacement

This guide will help you replace hinges on a sliding folding door. Whether you need to get rid of old ones or just want new, this guide will help you.

Written By: Torianna Marasco



## INTRODUCTION

Screws come loose and hinges get old and rusty, before you know it the door is becoming harder to use. Sometimes, the door panels start to pull apart since they are no longer connected by the hinges. Replacing screws and hinges will help things run smoother and keep things in tact.

The most important thing to know before attempting this replacement is basic knowledge of a screwdriver. Make sure you have the right size or else it will make this guide much more difficult. Know that counterclockwise will loosen/remove screws and clockwise will tighten/place screws.

Please be aware of the potential hazards of this guide. Depending on the placement of the doors, be sure that you can supply enough strength to hold the doors together to create the repair. Also, since this guide deals with hinges, it can be easy to pinch fingers or other things between the doors and/or hinges. If you feel it is necessary, have someone help you or stand near by in case things aren't working the way that they should.

A simple fix can go a long ways. Hopefully with this guide, you will be able to make this replacement smoothly and keep everything working properly. Knowing this task will make it easier if it needs to be replaced in the future. You can also learn from this guide to possibly help you make other replacements or repairs. Make your door open and close like it's brand new with the help of this guide. Happy fixing!



### TOOLS:

- [Phillips #2 Screwdriver](#) (1)
-



## Step 1 — Hinge



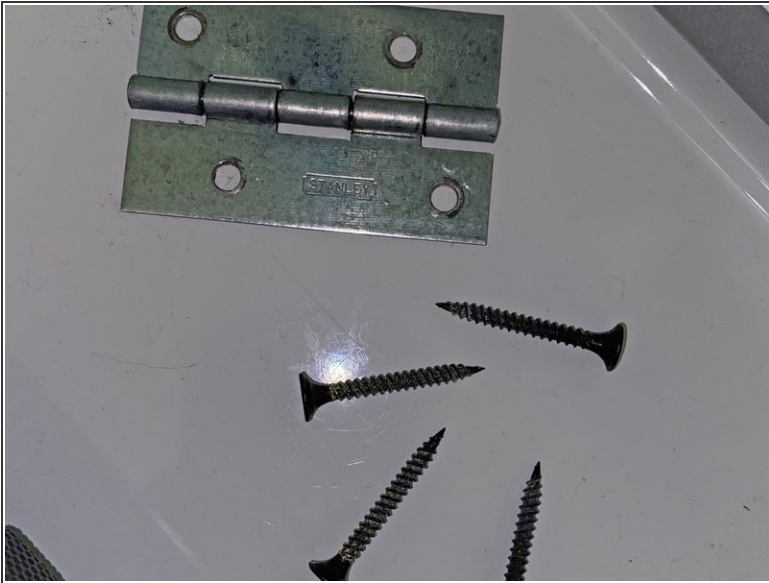
- Using the Phillips #2 screwdriver, remove any remaining old screws and hinges that you want to replace.
- ☑ Counterclockwise will remove the screws.

## Step 2



- ❗ Screws come loose when the holes become too large for the screws. If necessary, drill new holes into the door.
- In this case, the top two holes were no longer usable, so we created more underneath the bottom holes.

### Step 3



- One by one, use the screwdriver to place the new screws.
- ⓘ The screws shouldn't be too tight. Be sure that the hinge is loose enough to rotate while placing the other screws.
- Tighten all screws best you can with the hand held screwdriver.

### Step 4



- ⓘ The new hinge and screws should be in place now. If you would like, you can patch up the old holes and paint over them.

To reassemble your device, follow these instructions in reverse order.