



# Nintendo 2DS Wi-Fi Card Replacement

This guide will help you replace the Wi-Fi Card...

Written By: Ella



# INTRODUCTION

This guide will help you replace the Wi-Fi Card in your original model Nintendo 2DS.



## TOOLS:

- [Spudger](#) (1)
- [Fingers](#) (3)
- [Phillips #00 Screwdriver](#) (1)



## PARTS:

- [3DS Wi-Fi Card](#) (1)

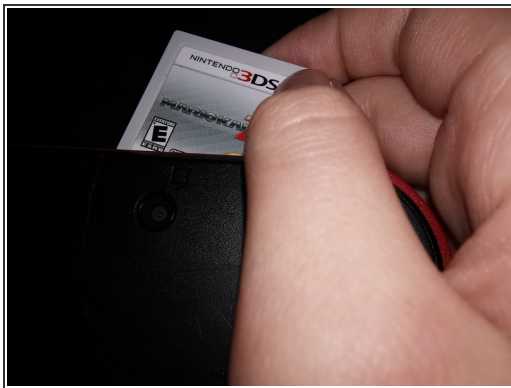



## Step 1 — Battery



- Flip over the 2DS.

## Step 2



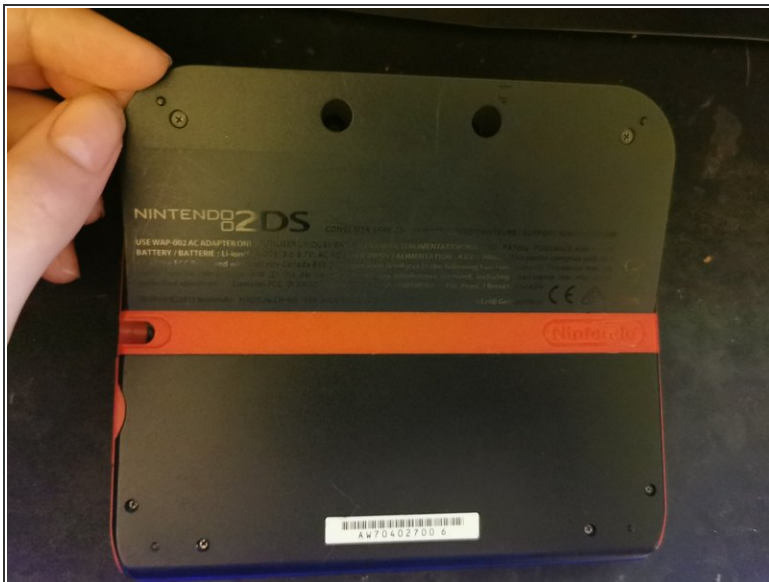
-  Remove the game cartridge, SD card and stylus if your console has them inserted.

## Step 3



- Undo the 2 Phillips #00 screws.
- ⓘ The screws will not completely detach from the battery cover.

## Step 4



- Lift the battery cover up and pull it out.



## Step 5



- Lift up the battery and remove it.

## Step 6 — Wi-Fi Card



- Remove the 10 Phillips #00 screws.

## Step 7



- Carefully remove the rear panel.
- ⚠ There's a ribbon cable on the rear panel attached to the motherboard, so be very careful not to damage that cable!

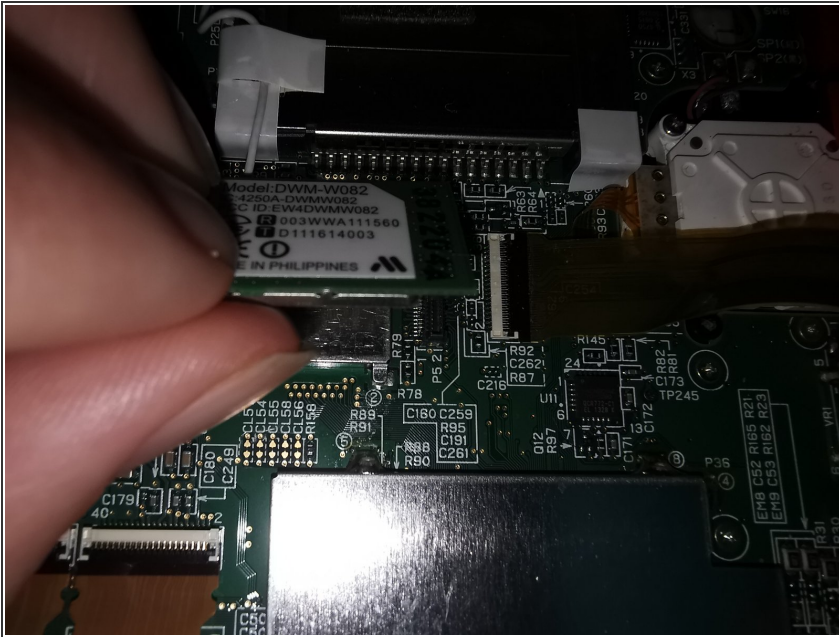
## Step 8




- Pull up the Wi-Fi card from the left side.



## Step 9



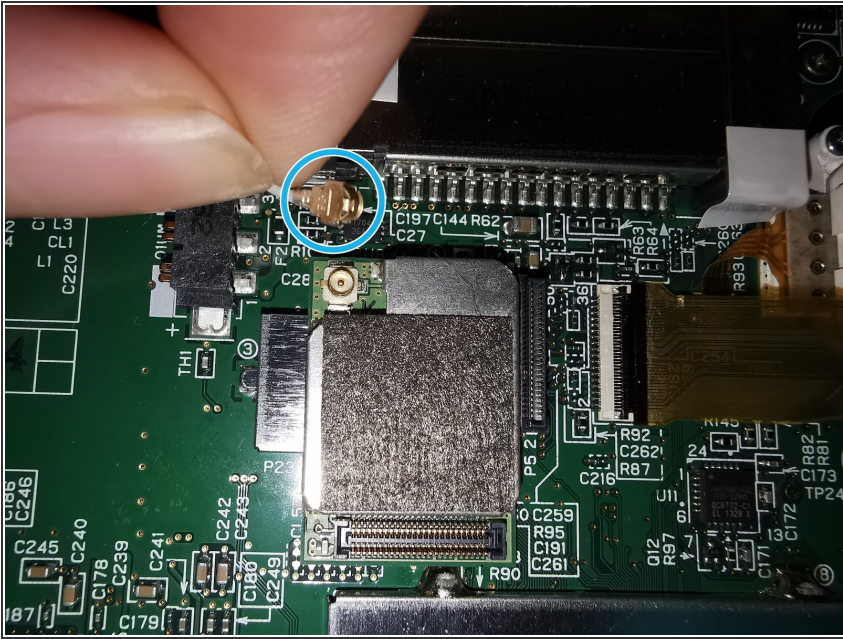
-  There's a cable behind the Wi-Fi card, so be very careful removing it!

## Step 10



- Flip over the Wi-Fi card.

## Step 11



- Use a spudger or your fingernail to remove the cable from the Wi-Fi card.

To reassemble your device, follow these instructions in reverse order.