



PlayStation 5 Optical Drive Replacement

This is a prerequisite-only guide! This guide...

Written By: Robert Boyd



INTRODUCTION

This is a prerequisite-only guide! This guide is part of another procedure and is not meant to be used alone.

Follow this guide to remove the optical drive on a PlayStation 5.

The optical drive is paired to the motherboard, so a replacement optical drive won't read discs.

Before you begin, completely **power down and unplug all cables** from your console. Remember to follow general electrostatic discharge (ESD) safety procedures while repairing the console.

TOOLS:

[Flathead 3/32" or 2.5 mm Screwdriver](#) (1)
[TR8 Torx Security Screwdriver](#) (1)
[Spudger](#) (1)
[Tweezers](#) (1)
[Phillips #0 Screwdriver](#) (1)

PARTS:

[PlayStation 5 Motherboard & Paired Optical Drive](#) (1)

Step 1 — Remove the stand screw



- If your PlayStation 5 is in its vertical orientation, flip it upside down so the stand is facing up.
- ⓘ If your PlayStation 5 is in its horizontal orientation, skip to Step 6.
- ⚠ **Work on a flat surface to prevent your PlayStation from falling over.**
- Use a coin or a flathead screwdriver to remove the 26.5 mm-long stand screw.

Step 2 — Remove the vertical stand



- Lift straight up to remove the stand.

Step 3 — Store the stand screw



- Insert the screw into the cubby on the bottom of the stand.

Step 4 — Cap the screw hole



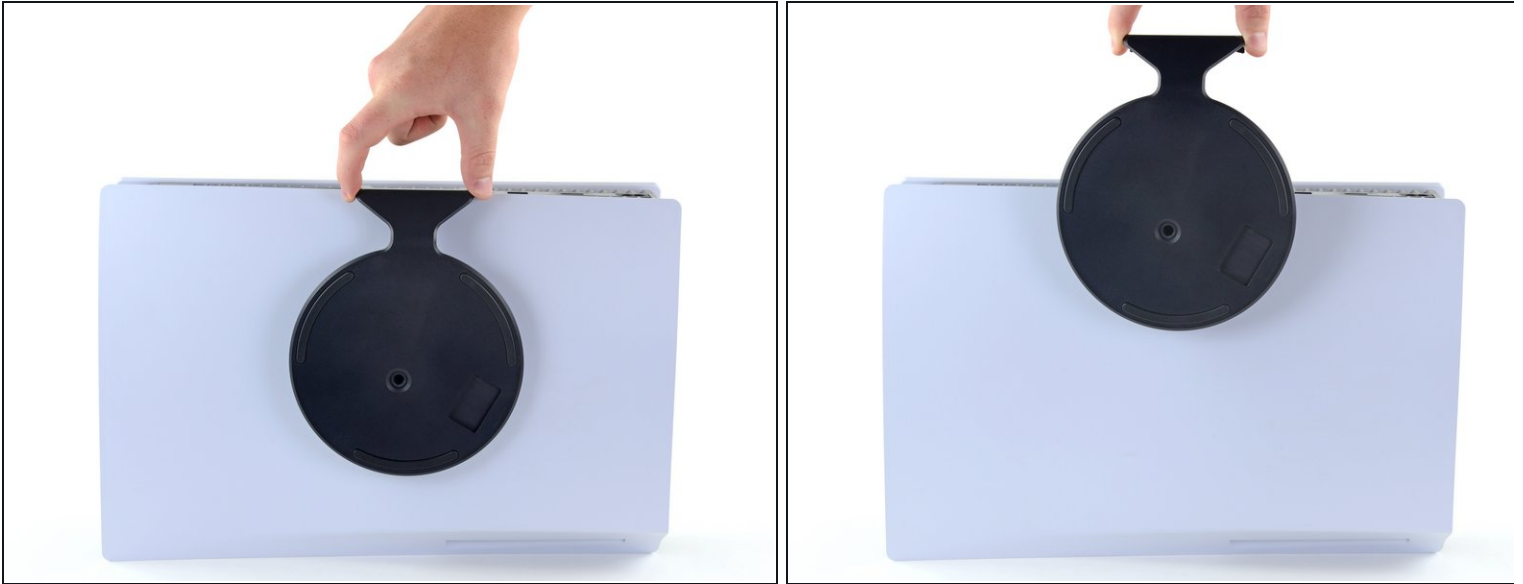
- Use a pair of tweezers or your fingernail to remove the cap from the cubby.
- Use your finger to press the cap into the screw hole.

Step 5 — Close the cubby



- Twist the stand counterclockwise to close the cubby.

Step 6 — Remove the horizontal stand



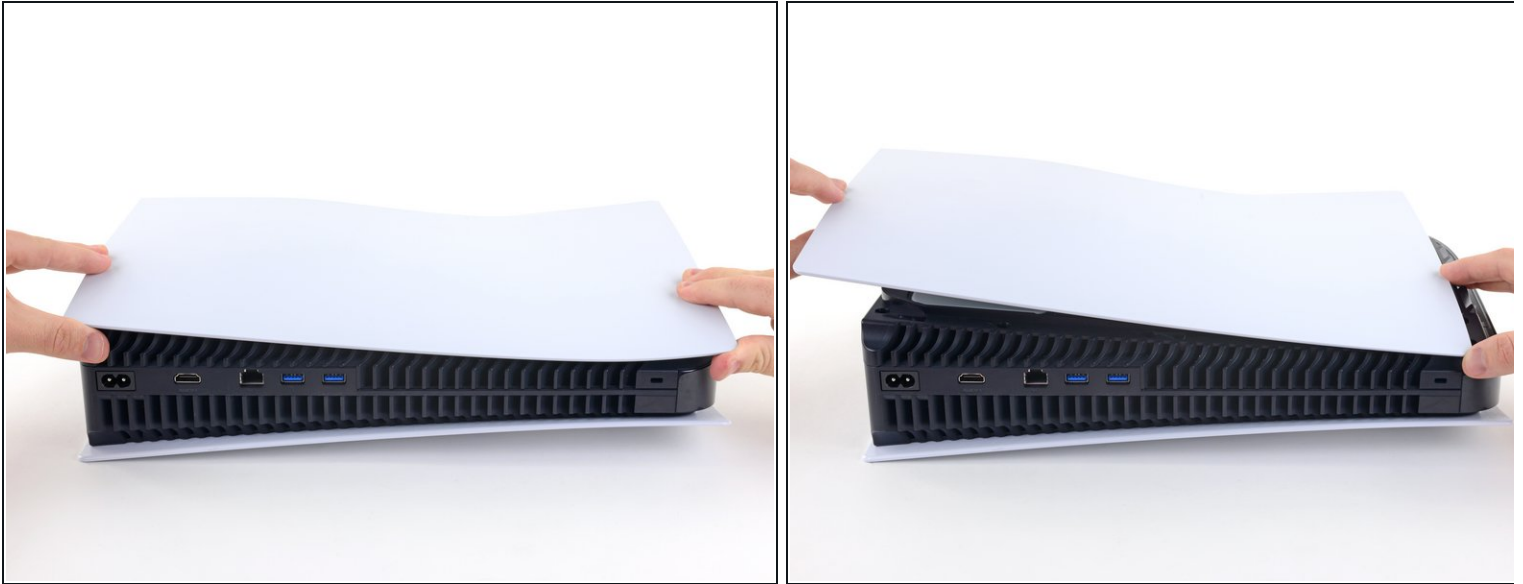
- If your PlayStation 5 is in its horizontal orientation, rest it on its face with the charging port facing up.
- Lift the stand straight up to remove it.

Step 7 — Remove the right faceplate



- Flip the device over so that the USB and ethernet ports are on the left side from your perspective.
- Lift up the corner of the faceplate to unclip it from the case.

Step 8



- While lifting up the corner, slide the faceplate towards the bottom of the device.
- Remove the right faceplate.

Step 9 — Pry up the grille



- Insert the flat end of a spudger underneath the grille and into the gap above the fan.
- Lift up with the spudger to pry the grille away from the case.

Step 10 — Remove the grille



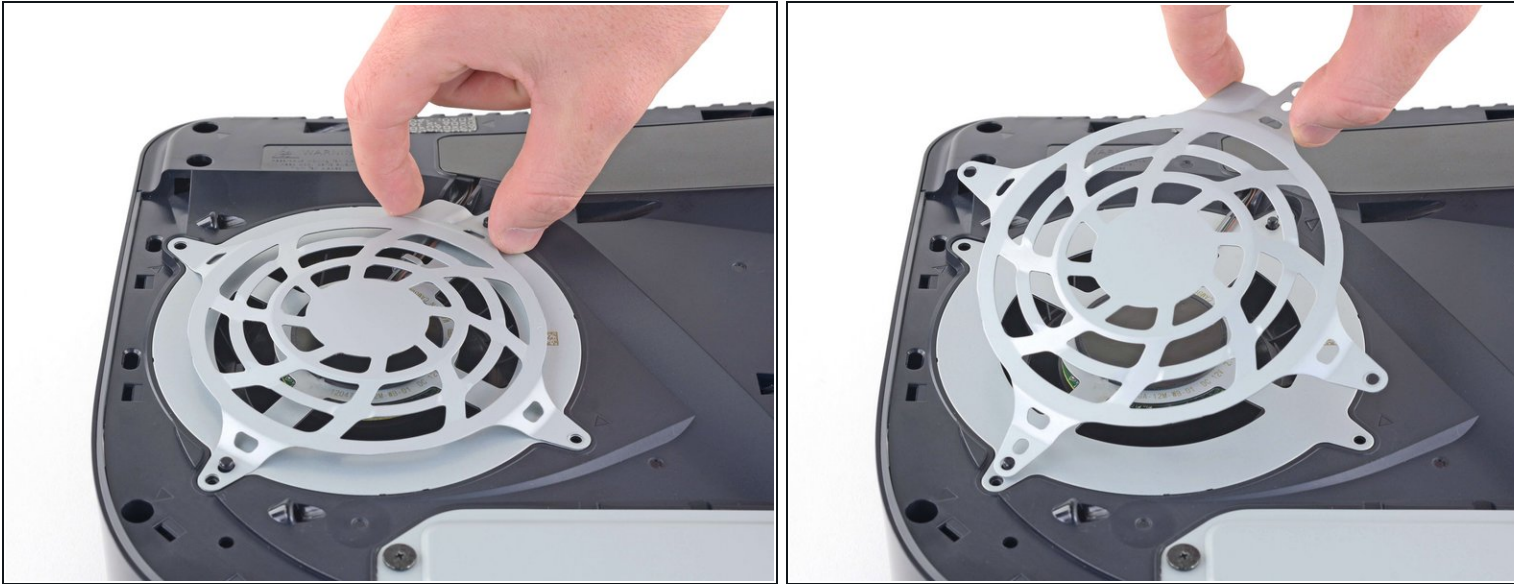
- Lift the grille away from the case to remove it.

Step 11 — Remove the fan shroud screws



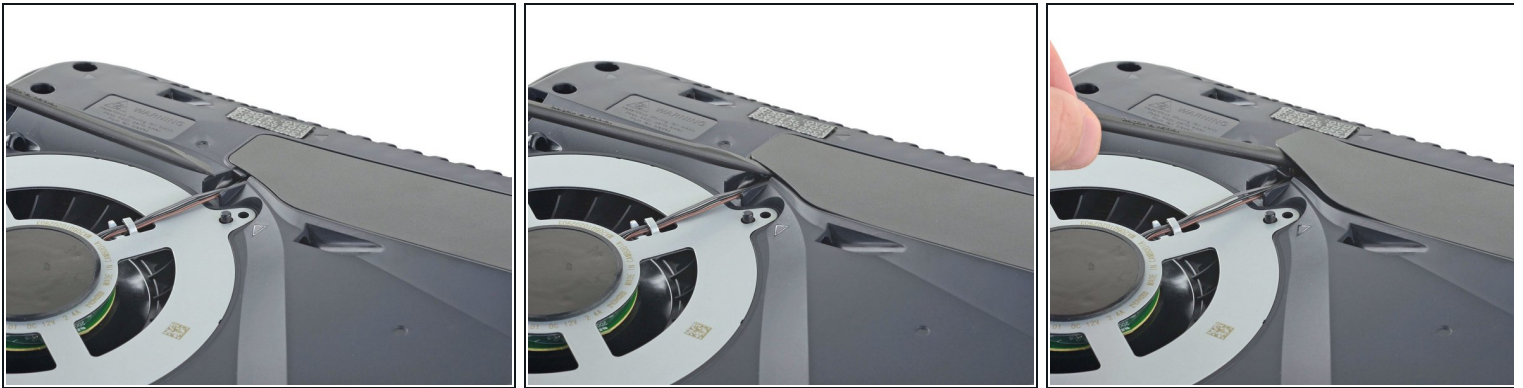
- Use a TR8 Torx security driver to remove the four screws securing the fan shroud to the case:
 - Two 23.3 mm-long screws
 - One 11.4 mm-long screw
 - One 31 mm-long screw
- ⓘ Throughout this repair, [keep track of each screw](#) and make sure it goes back exactly where it came from to avoid damaging your console.

Step 12 — Remove the fan shroud



- Lift the fan shroud straight up to remove it.

Step 13 — Remove the wire cover

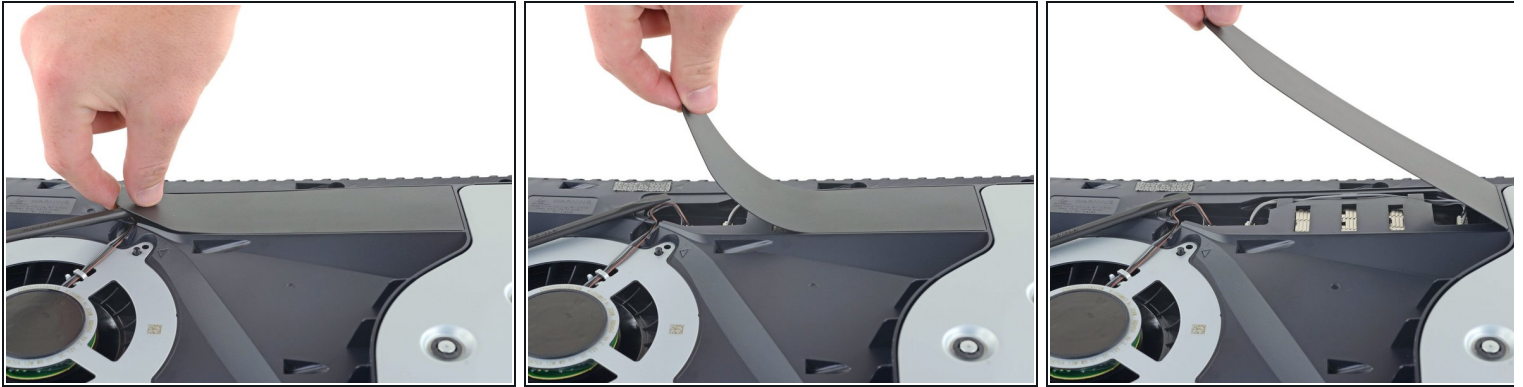


- Insert the flat end of a spudger beneath the black wire cover and into the gap above the fan wires.

⚠️ Pry only on the wire cover, not on the fan wires themselves.

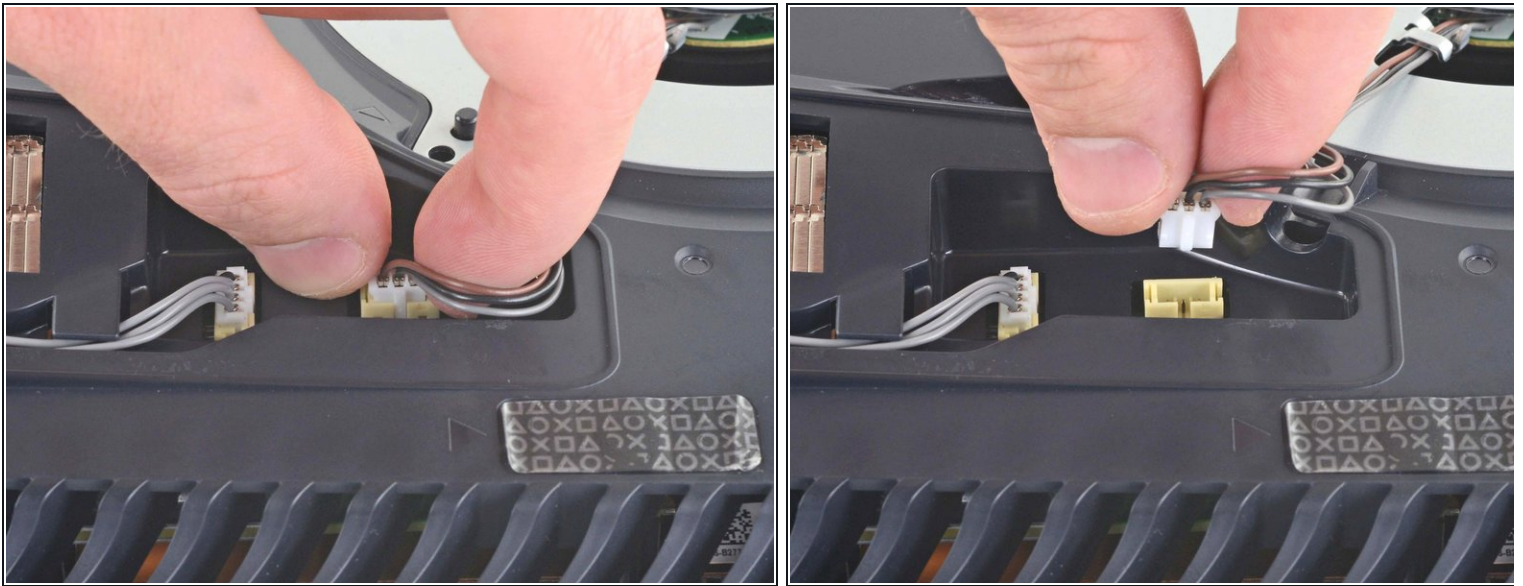
- Use the spudger to peel up the wire cover until you can grip it with your fingers.

Step 14



- Use your fingers to peel off the wire cover.

Step 15 — Disconnect the fan



- Use your fingers to grip the edges of the fan cable connector, and pull up to disconnect it from the motherboard.

 Always pull cables by their connectors and not the wires themselves.

Step 16 — Remove the fan



- Lift the fan up and out of the case to remove it.

Step 17 — Remove the SSD cover



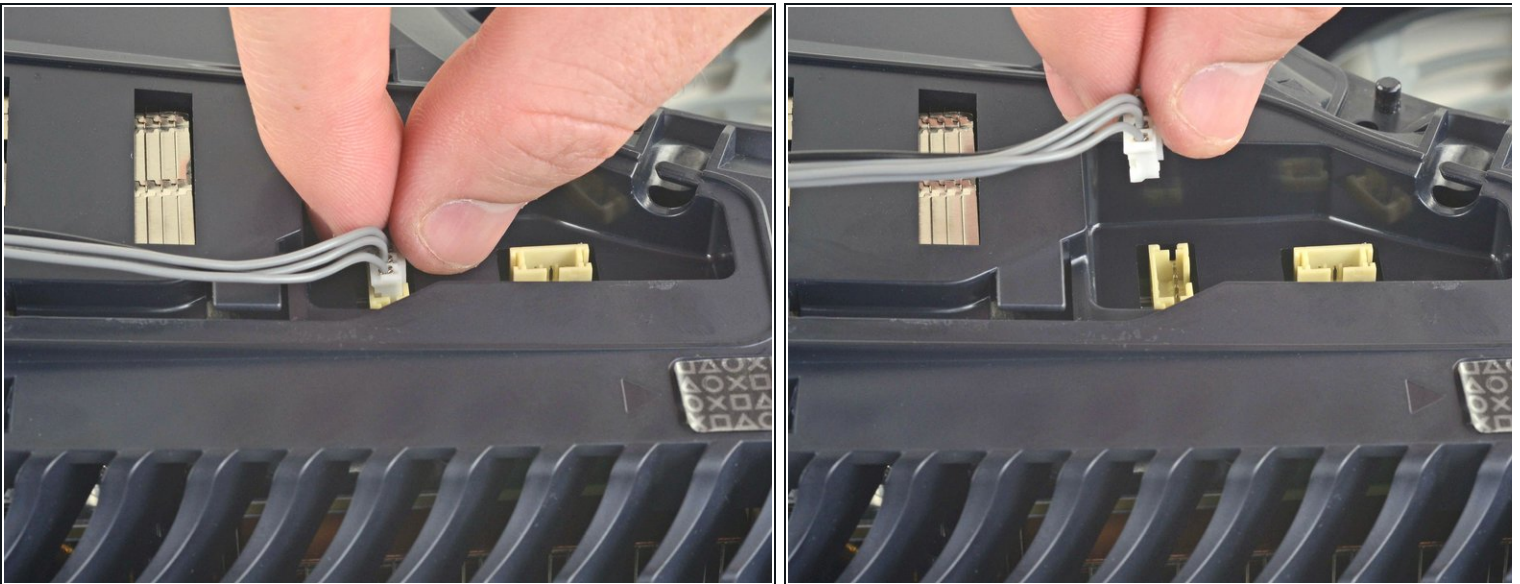
- Use a Phillips screwdriver to remove the 17 mm-long SSD cover screw.

Step 18



- Use your finger to slide the SSD cover towards the top of the device to unclip it from the case.
- Remove the SSD cover.

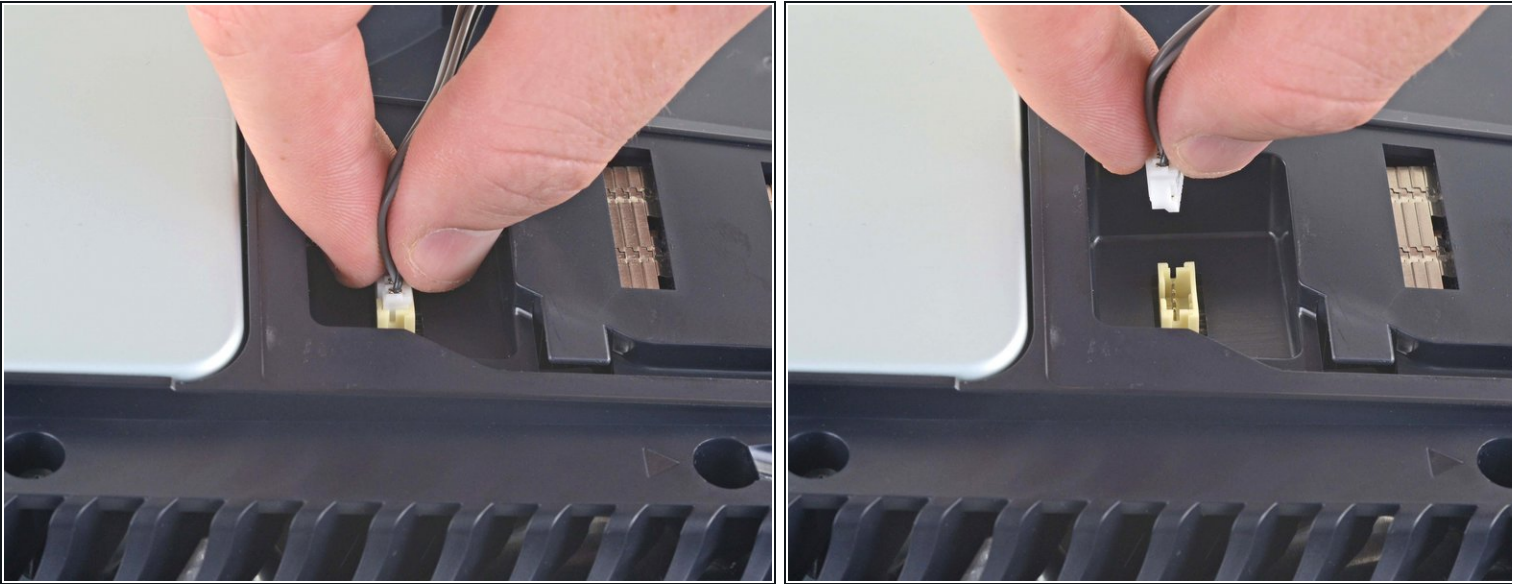
Step 19 — Remove the optical drive wire



- Use your fingers to grip the edges of the optical drive cable connector, and pull up to disconnect it from the motherboard.

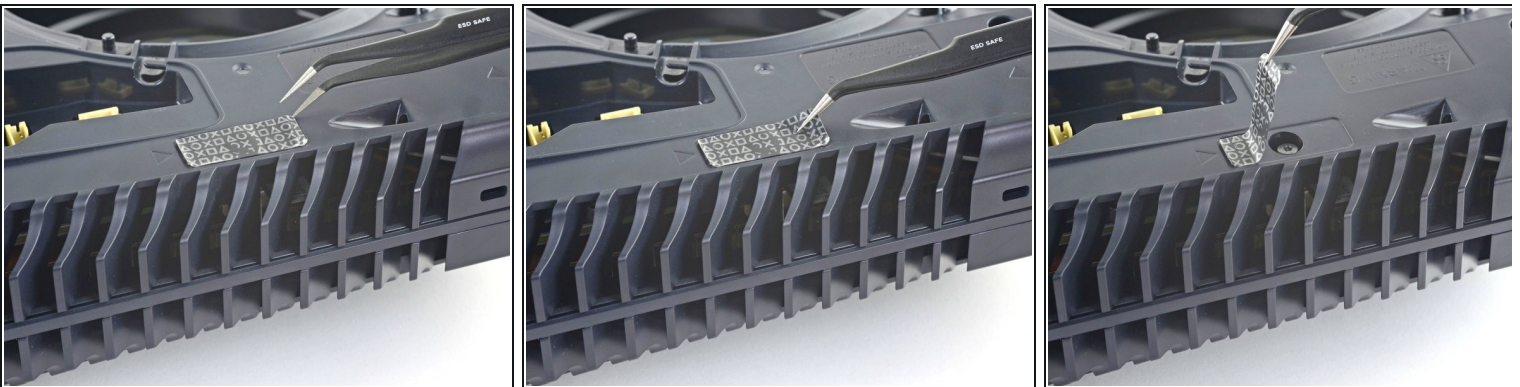
⚠ Always pull cables by their connectors and not the wires themselves.

Step 20



- Use your fingers to grip the edges of the optical drive cable connector, and pull up to disconnect it from the optical drive.

Step 21 — Remove the tamper-evident sticker



- Use a pair of tweezers to remove the tamper-evident sticker covering the remaining case screw.
- ① If your PlayStation 5 hasn't been opened before, this sticker will be completely black. The pattern will appear after you remove it.
- ① Technically, these are tamper-evident stickers—but don't worry—[Sony can't legally void your warranty](#), as long as you don't damage anything. Have fun!

Step 22 — Remove the case screws



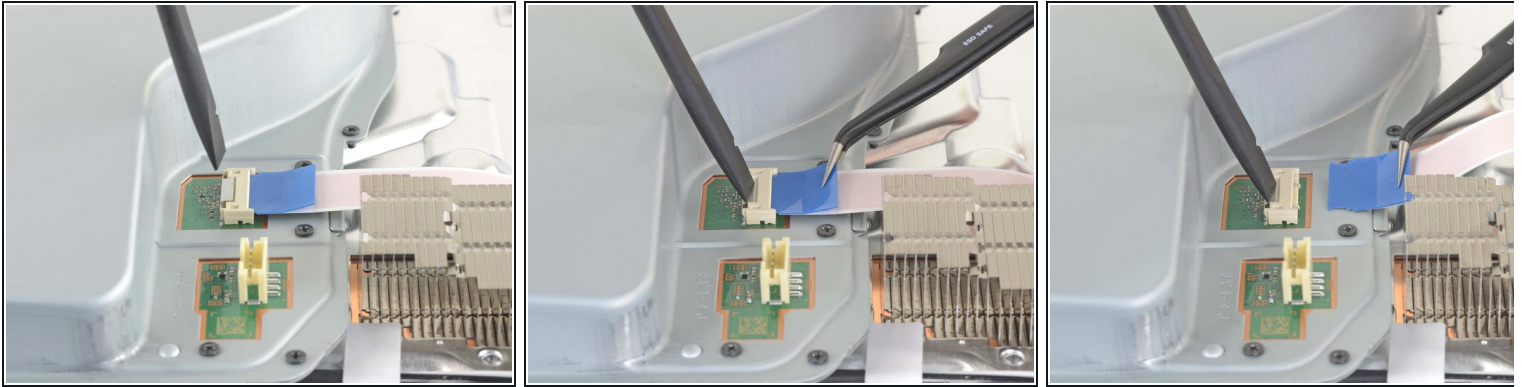
- Use a T8 Torx driver to remove the eleven screws securing the case:
 - Six 18.6 mm-long screws
 - Two 23.3 mm-long screws
 - Two 43.2 mm-long screws
 - One 7.3 mm-long screw

Step 23 — Remove the case



- Lift the case straight up to remove it.

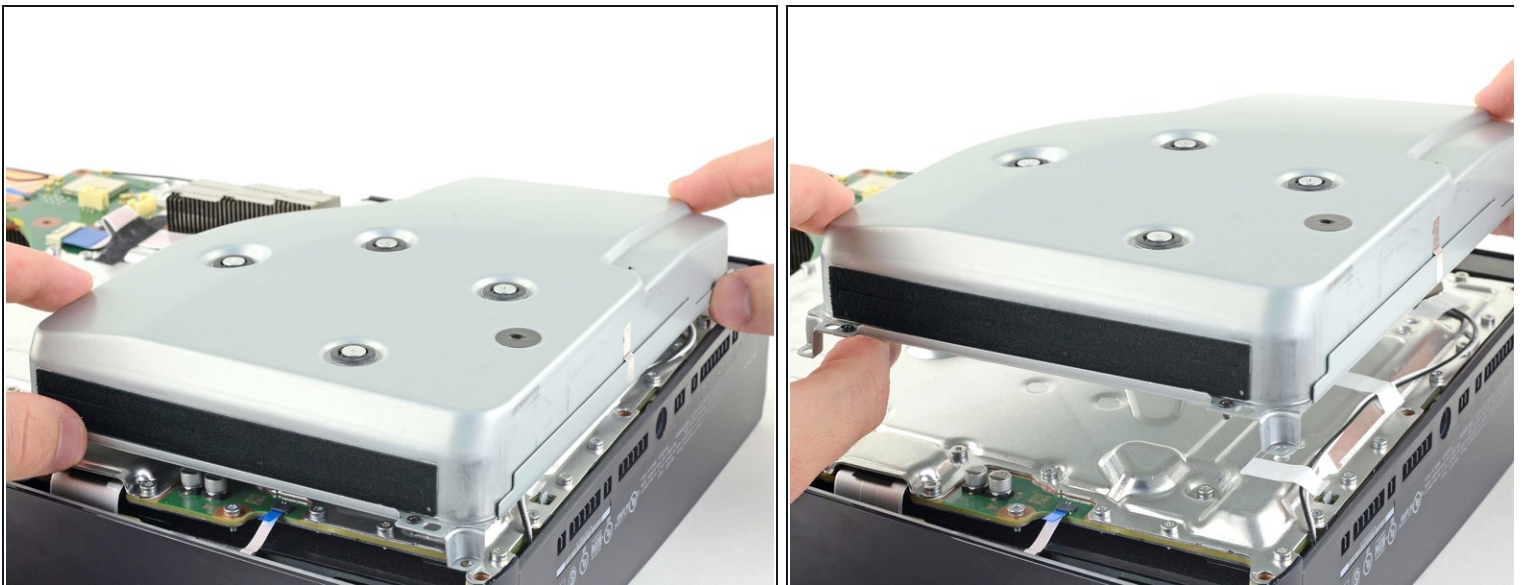
Step 24 — Remove the optical drive ribbon cable



- Use the flat end of a spudger to press down on the optical drive connector's metal locking tab.
- With the metal tab depressed, use a pair of tweezers to pull the blue pull tab directly away from the connector to disconnect the cable from the optical drive.

⚠ Pull only on the pull tab, not the cable itself.

Step 25 — Remove the optical drive



- Lift the optical drive away from the device to remove it.

To reassemble your device, follow these instructions in reverse order.

Take your e-waste to an [R2 or e-Stewards certified recycler](#).

Repair didn't go as planned? Try some [basic troubleshooting](#), or ask our [PlayStation 5 Answers community](#) for help.