



Lenovo ThinkPad T470 Internal Battery Replacement

This guide will show you how to replace the...

Written By: Kristen Gismondi



INTRODUCTION

This guide will show you how to replace the internal battery in your Lenovo ThinkPad T470.

A healthy laptop battery will keep your laptop powered on, even when your device is unplugged from an external power source.

If your laptop no longer holds a charge, or loses its charge very quickly, you most likely have a dead or failing battery which may require replacement. Depending on the cause of your faulty battery, you may be able to resolve the issue using this list of troubleshooting symptoms and solutions from [Lenovo's support forum](#).

Make sure to [disable the internal battery](#), power down your device, and disconnect from any external power sources before you begin.

TOOLS:


[Phillips #1 Screwdriver](#) (1)

PARTS:

[Lenovo ThinkPad P51s, P52S, T470, T480, T570, T580, and TP25 Battery](#) (1)
[Lenovo 01AV421 Laptop Battery](#) (1)

Step 1 — External Battery



 Before you begin this guide, make sure to [disable the internal battery](#), power down your device, and disconnect from any external power sources.

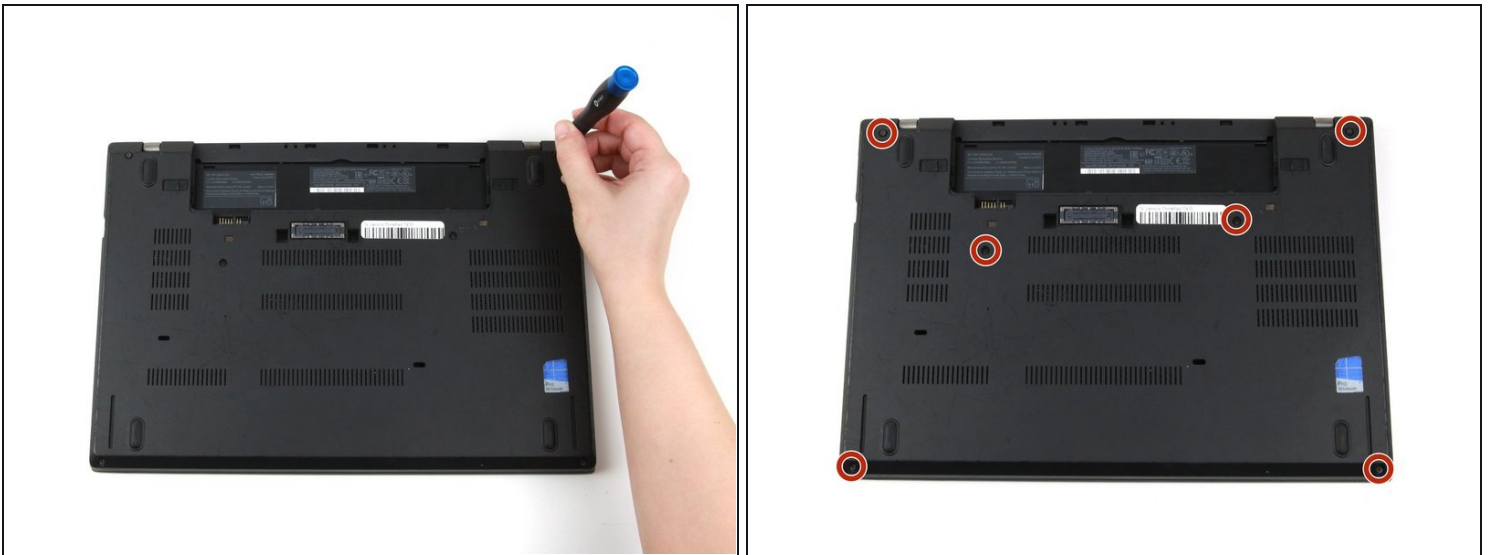
- Place the laptop so that the bottom is facing upwards.
- Slide the latch on the left side of the battery to the left until it clicks in place.

Step 2



- Slide the latch on the right side of the battery to the right and hold it in place with your thumb.
- Use your other hand to slide the battery towards the back of the laptop.
- Lift the battery up and away from the laptop.

Step 3 — Bottom Cover



- Use a Phillips #1 screwdriver to loosen the six captive screws on the bottom cover of the laptop.

Step 4



- Use your hands to pull up on the back cover and release the plastic clips starting on the bottom side of the battery compartment.

⚠ Potential for device damage: Be sure to detach the plastic clips in this area first. You risk cracking the bottom cover if you attempt to detach it from around the edges of the laptop first.

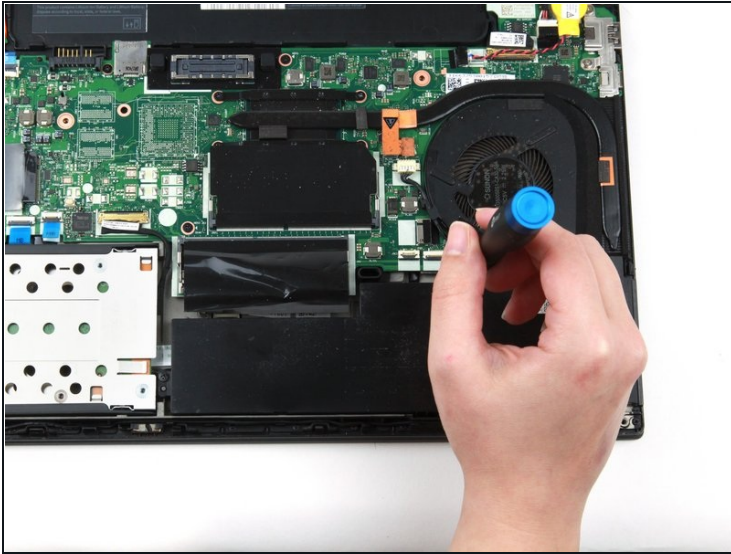
- Use your hands to pull up on the right side of the bottom cover to release the plastic clips.
- Use your hands to pull up on the left side of the bottom cover to release the plastic clips.

Step 5



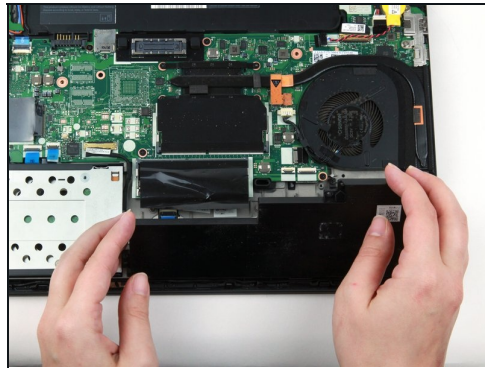
- Remove the bottom cover from the laptop.
- ✦ Disconnect the battery from the board before continuing.

Step 6 — Internal Battery



- Remove two 5 mm screws from the internal battery using a Phillips #1 screwdriver.

Step 7



- Use your hands to lift the battery up and away from the laptop.

To reassemble your device, follow these instructions in reverse order.

Take your e-waste to an [R2 or e-Stewards certified recycler](#).

Repair didn't go as planned? Try some [basic troubleshooting](#), or ask our [Answers community](#) for help.