



# KitchenAid Mixer Motor Repair

How to fix a KitchenAid Stand Mixer Professional 600 that will not turn on

Written By: Adam Basaraba

# KitchenAid®

## 6 QT. STAND MIXER PROFESSIONAL 600 BOWL LIFT

### MODELS:

KP26M1XMR5 (Meringue)	KP26M1XPK5 (Pink)
KP26M1XBS5 (Blue Steel)	KP26M1XTG5 (Tangerine)
KP26M1XCM5 (Cinnamon)	4KP26M1XMR5 (Meringue)
KP26M1XDP5 (Dark Pewter)	4KP26M1XBS5 (Blue Steel)
KP26M1XLC5 (Licorice)	4KP26M1XDP5 (Dark Pewter)
KP26M1XMC5 (Metallic Chrome)	4KP26M1XLC5 (Licorice)
KP26M1XNP5 (Nickel Pearl)	4KP26M1XMC5 (Metallic Chrome)
KP26M1XPM5 (Pearl Metallic)	4KP26M1XNP5 (Nickel Pearl)
KP26M1XBP5 (Brass Pearl)	4KP26M1XPM5 (Pearl Metallic)
KP26M1XBR5 (Bronze Pearl)	4KP26M1XBY5 (Boysenberry)
KP26M1XCE5 (Copper Pearl)	4KP26M1XGA5 (Green Apple)
KP26M1XRC5 (Cayenne)	4KP26M1XES5 (Espresso)
KP26M1XSV5 (Silver Sage)	KP26M1XQBF5 (Buttercup)
KP26M1XSE5 (Seashell)	KP26M1XQBS5 (Blue Steel)
KP26M1XAZ5 (Azure Blue)	KP26M1XQBW5 (Blue Willow)
KP26M1XER5 (Empire Red)	KP26M1XQCV5 (Caviar)
KP26M1XWG5 (Williams Sonoma Green)	KP26M1XQER5 (Empire Red)
KP26M1XOB5 (Onyx Black)	KP26M1XQGC5 (Gloss Cinnamon)
KP26M1XWH5 (White)	KP26M1XQNP5 (Nickel Pearl)
KP26M1XCV5 (Caviar)	KP26M1XQOB5 (Onyx Black)
KP26M1XBU5 (Cobalt Blue)	KP26M1XQPM5 (Pearl Metallic)
KP26M1XES5 (Espresso)	KP26M1XQPT5 (Pistachio)
KP26M1XGA5 (Green Apple)	KP26M1XQWH5 (White)
KP26M1XGC5 (Gloss Cinnamon)	KP26M1XQCE5 (Copper Pearl)

## INTRODUCTION

Whether you use your blender to make smoothies or complicated dinner recipes, we understand that it plays an integral role in your daily routine. If your favorite blender stops working, don't buy a new one! Save some money and repair all the common blender repair issues including leaks, broken switches, faulty motors, problems with the blade assembly, and more.

6 QT. STAND MIXER PROFESSIONAL 600 BOWL LIFT MODELS: KP26M1XMR5 (Meringue) KP26M1XPK5 (Pink) KP26M1XBS5 (Blue Steel) KP26M1XTG5 (Tangerine) KP26M1XCM5 (Cinnamon) 4KP26M1XMR5 (Meringue) KP26M1XDP5 (Dark Pewter) 4KP26M1XBS5 (Blue Steel) KP26M1XLC5 (Licorice) 4KP26M1XDP5 (Dark Pewter) KP26M1XMC5 (Metallic Chrome) 4KP26M1XLC5 (Licorice) KP26M1XNP5 (Nickel Pearl) 4KP26M1XMC5 (Metallic Chrome) KP26M1XPM5 (Pearl Metallic) 4KP26M1XNP5 (Nickel Pearl)



### TOOLS:

- [Phillips screw driver 2.0](#) (1)



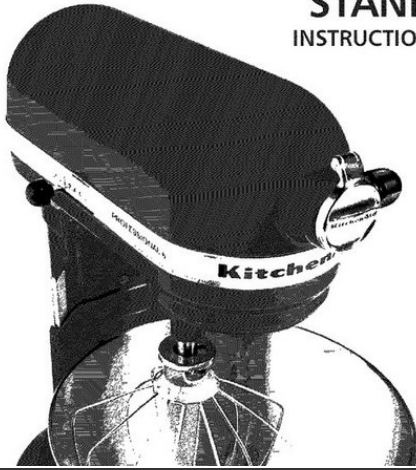
### PARTS:

- [W10247536](#) (1)

## Step 1 — Motor

# KitchenAid®

## BOWL-LIFT STAND MIXER INSTRUCTIONS AND RECIPES

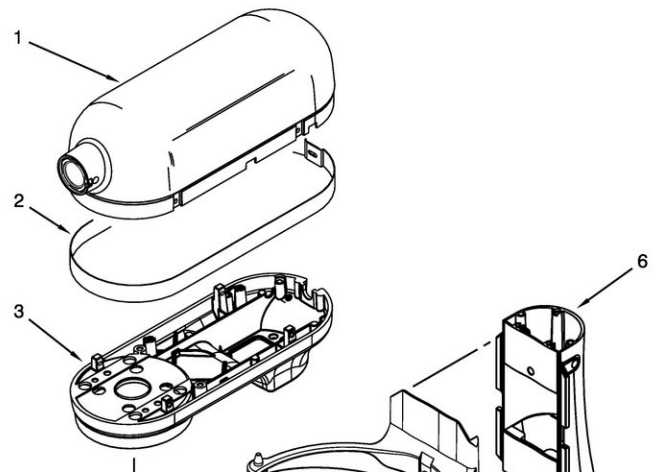


- This Is the Most Common KitchenAid Mixer Malfunction—And How to Fix It

## Step 2



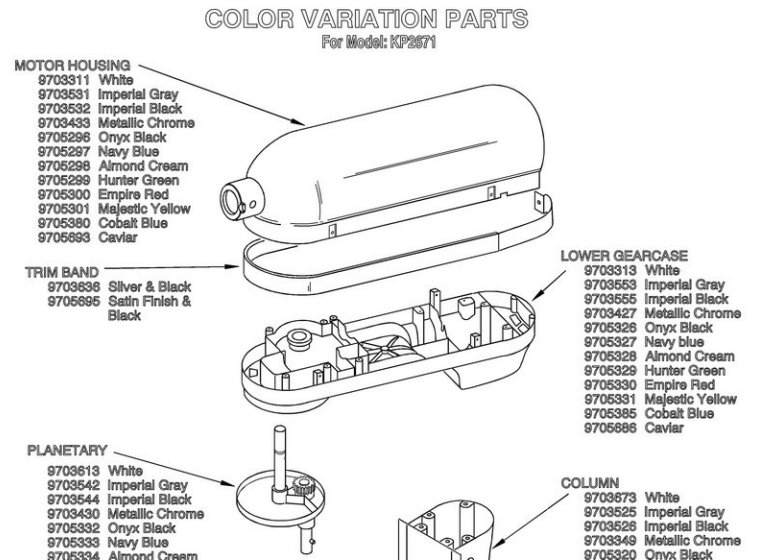
### COLOR VARIATION PARTS



- Remove the lid there is one screw at the back holding the band onto the mixer, and four screws holding the lid on.

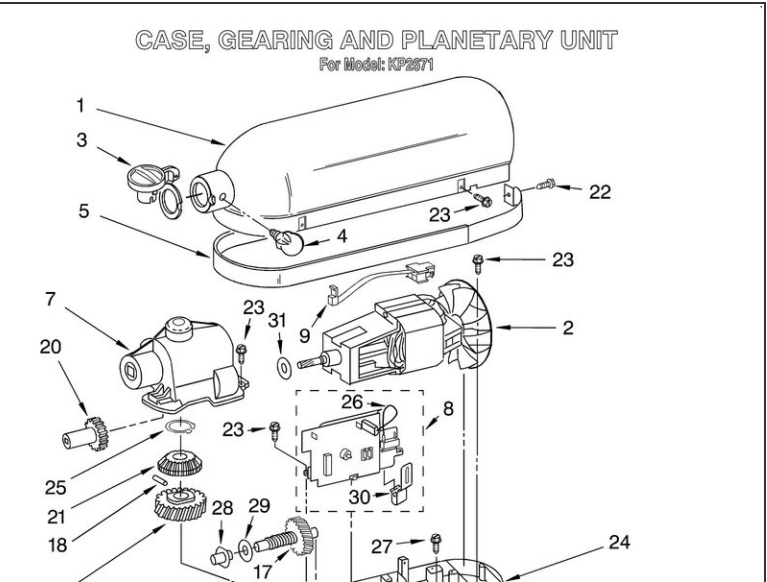


## Step 3



- There are four screws holding the motor in place remove them and lift the motor out. Remember to disconnect the wiring connector before you remove the mixer motor from the body.

## Step 4



- Install the new motor W10247536 number #2 and test it after you reinstall all the screws holding it down. Remember to hook back up the electrical wires before testing the KitchenAid Pro Series Stand Mixer Motor.

To reassemble your device, follow these instructions in reverse order.