



Whirlpool Refrigerator Door Light Replacement

Use this guide to replace the door light or LED...

Written By: nicO Gurney



INTRODUCTION

Use this guide to replace the door light or LED light in your Whirlpool Refrigerator.

The door light illuminates the right side of the refrigerator. If the lighting in your refrigerator is dim or dark, then the door light might be broken.

This guide will work for most Whirlpool refrigerators. This guide is written with a model WRS315SDHW refrigerator. If you have a different model, you may encounter some minor disassembly differences, but the overall repair process will be the same.

Note: Some photos show the doors removed for clarity purposes. Removing them is not required and will not change the procedure.

TOOLS:

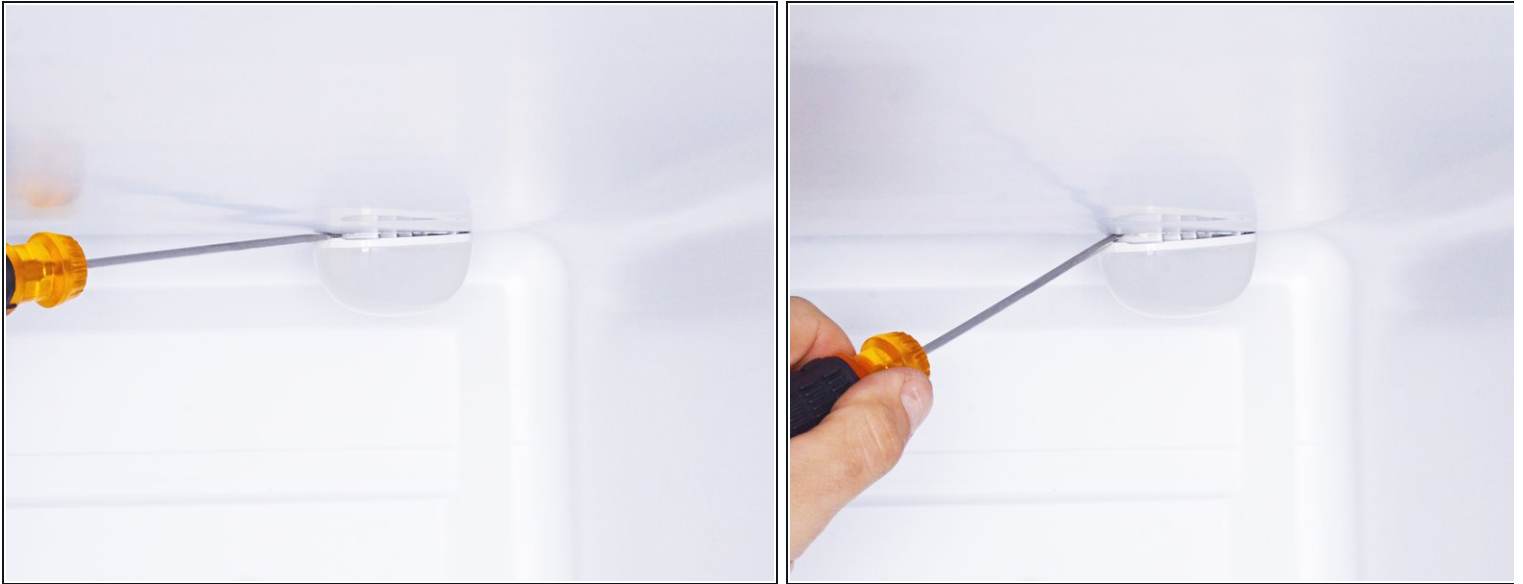
Flathead 3/32" or 2.5 mm Screwdriver (1)

Step 1 — Open the doors



- Depending on your repair, open one or both doors.

Step 2 — Unclip the door light



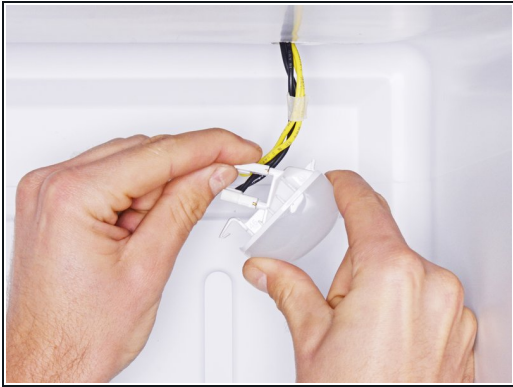
- i** Be careful during this step, as it's easy to scratch the interior of the fridge or crack cold and brittle plastic.
- Carefully insert a flathead screwdriver, or a similar tool, between the door light and the chassis.
 - Pry up to separate the door light enough so you can grip it with your fingers.

Step 3



- Tilt the door light downward to completely release its plastic clips.
- Pull the light down to expose its connectors.

Step 4



- Disconnect any connectors attached to the door light.
 - Remove the door light.
-

To reassemble your device, follow these instructions in reverse order.

Take your e-waste to an [R2 or e-Stewards certified recycler](#).

Repair didn't go as planned? Ask our [Answers community](#) for help.