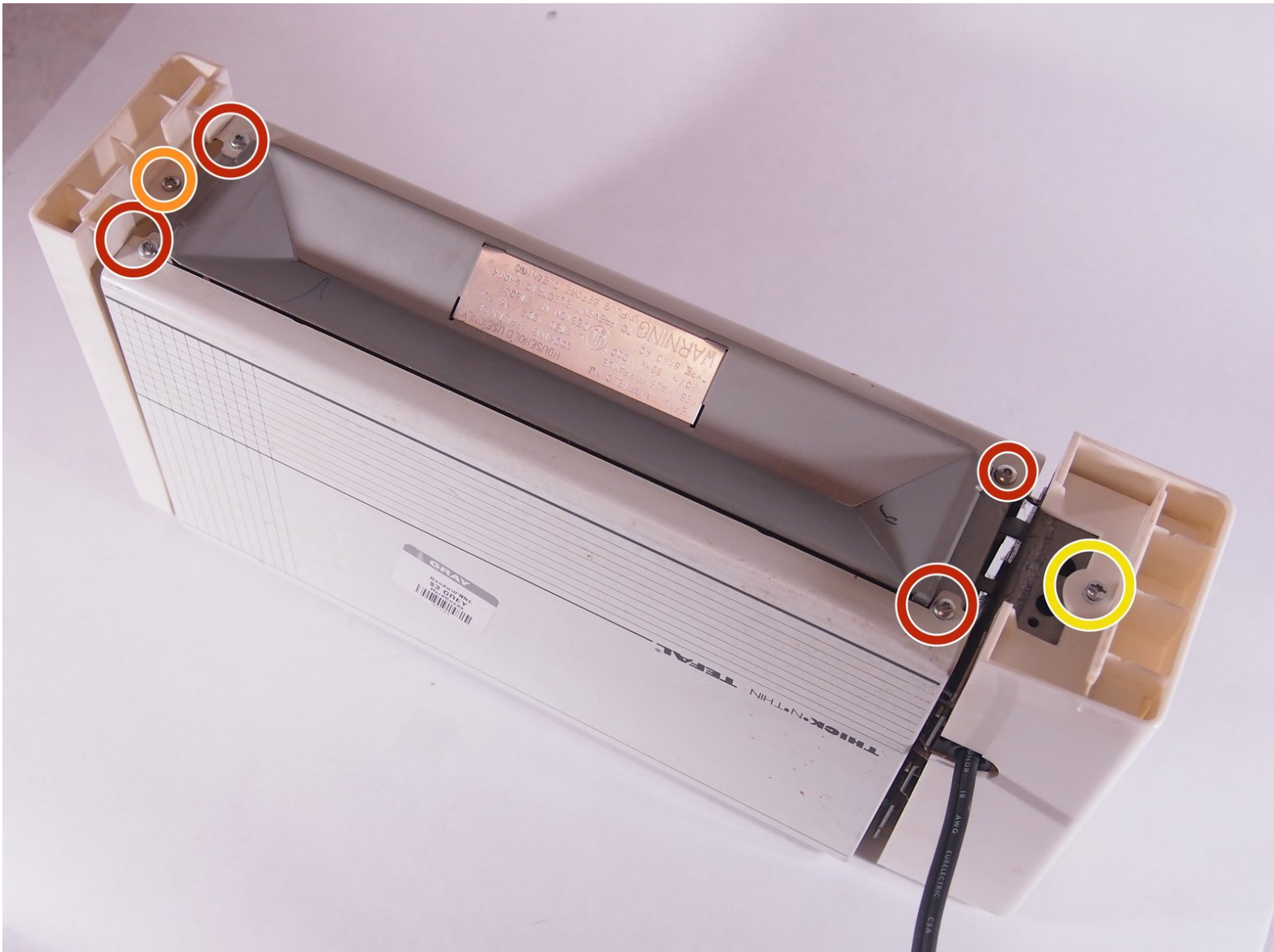




Tefal Thick N Thin Toaster 815032 Side Panels Replacement

How to replace Tefal Thick N Thin Toaster 815032 side panels.

Written By: Kristen Gismondi



INTRODUCTION

This guide will teach you how to remove the side panels of your Tefal Thick N Thin Toaster 815032, the plastic parts that guard the access to the inner mechanism. Doing this will allow you to access the heating parts and other inner components of the toaster in case they require maintenance or need a replacement due to malfunctions of the device.



TOOLS:

- [TR9 Torx Security Screwdriver](#) (1)
-

Step 1 — Side Panels



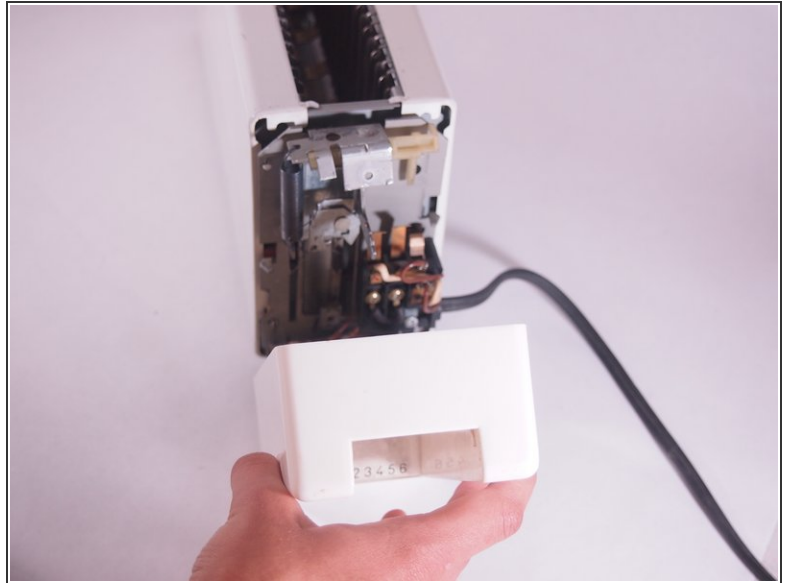
- Turn the toaster upside down.
- Remove the four 10 mm screws from the bottom of the toaster using a TR9 Torx screwdriver.
- Remove the 14 mm Torx-slot combination screw on the opposite side of the toaster's lever with a TR9 Torx screwdriver.
- Remove the 11 mm Torx-slot combination screw near the toaster's lever with a TR9 Torx screwdriver.

Step 2



- Remove the side of the toaster that does not have the lever.
- ⓘ The side will just pop off, as you have removed the screw holding it in place.

Step 3



- Remove the 10 mm screw from the top of the remaining side of the toaster using a TR9 Torx screwdriver.
- ⓘ This side will pop off as well once you have removed the screw.
- The toaster's lever and heating slide will fall off with a simple pull.

To reassemble your device, follow these instructions in reverse order.