



1997-2006 Jeep Wrangler Instrument Cluster Light Bulb Replacement

How to replace the factory light bulbs in the instrument cluster of the 1997-2006 Jeep Wrangler TJ with LED bulbs.

Written By: Mason



This document was generated on 2021-06-06 10:17:14 PM (MST).

INTRODUCTION

If you own an older vehicle you know that the factory light bulbs usually aren't very bright. In this guide I will be showing you how to replace the tired old factory lights with brand new LED replacements that will help you see your dash better and give a new look to an old car. This guide is specific for a 2001 Jeep Wrangler TJ.



TOOLS:

- [Phillips #3 Screwdriver](#) (1)
- [Flathead Screwdriver](#) (1)
- [Flat Needle Nose Pliers](#) (1)



PARTS:

- [Replacement T5 LED Light bulbs](#) (1)

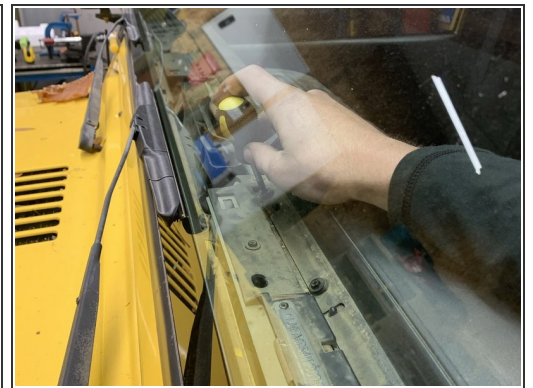
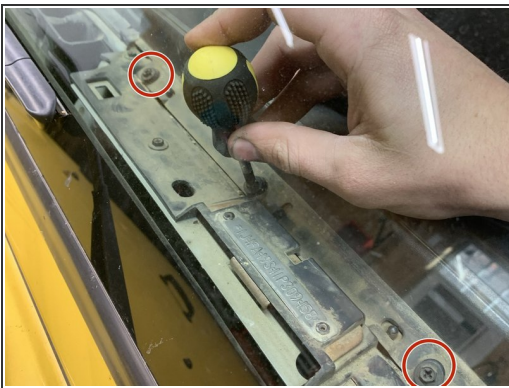
This part can be purchased in multiple colors and from various vendors.

Step 1 — Instrument Cluster Light Bulbs



- First a look at the original lights in the dash.

Step 2



- Remove the three screws along the top of the dash cluster.
- ⓘ There is a cover to gain access to the top two of four screws that hold the cluster in.

Step 3



- Remove the two screws that hold the second part of the dash cluster, then remove the dash cluster.

Step 4



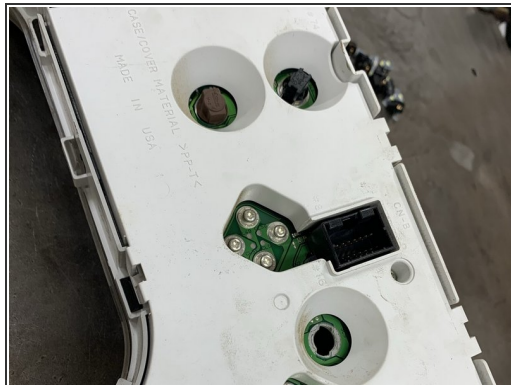
- Now that all four screws holding the dash on are visible, remove them to allow the dash to come off.

Step 5



- Assemble the new lights by pushing the butt end of the bulb down into the body until seated fully.
- ⓘ The bulbs are polarity sensitive so pay attention to the direction that you put them in.

Step 6



- Remove the old light bulbs from the dash and replace them with the new ones. To do so simply twist the body of the light and it will pop right out. To install the new bulbs do the opposite. Push the body of the bulb flush with the mounting surface on the dash and then twist to hold it tight.

Step 7



- ★ The final step is the reassembly. This is very easy as you simply repeat the steps taken to remove the dash but in opposite order. If upon reassembly you find some of the lights not working simply remove the bulb in question and switch the direction of the bulb in the body. That will fix the problem. As you can see the result is well worth it.

To reassemble your device, follow these instructions in reverse order.