



Philips Sonicare DiamondClean Circuit Board Replacement

This guide helps users replace the Circuit Board on the Phillips Sonicare Dimaondclean Toothbrush.

Written By: Caleb Watson





TOOLS:

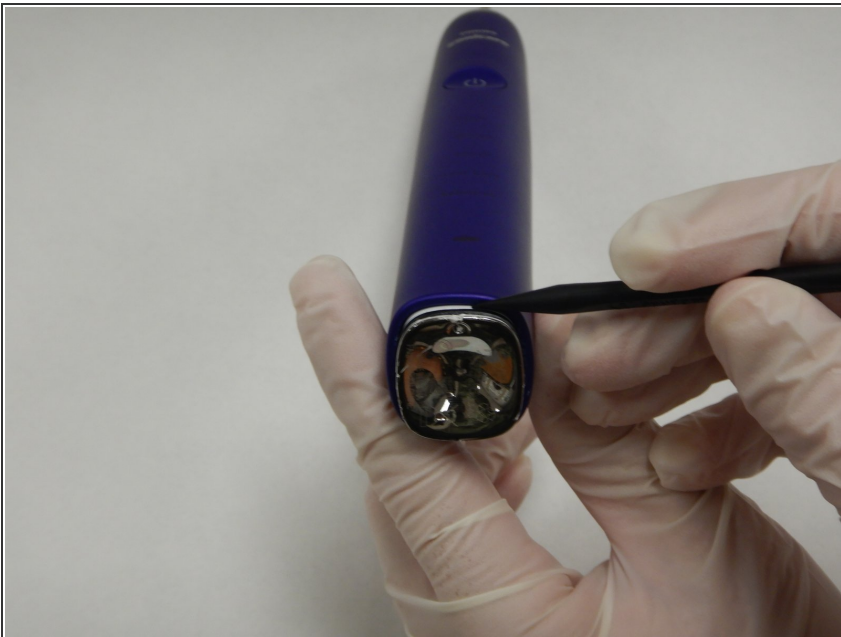
- [Soldering Iron](#) (1)
- [Spudger](#) (1)
- [Phillips #00 Screwdriver](#) (1)

Step 1 — Circuit Board



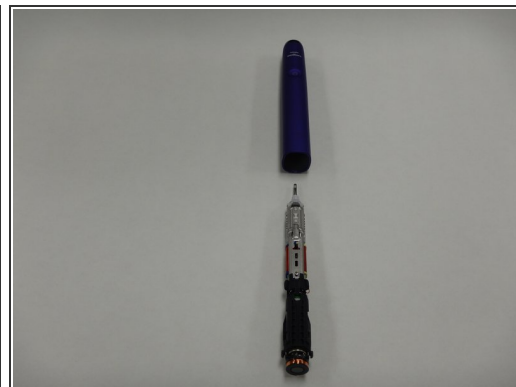
- Pull the brush head from the toothbrush.

Step 2



- Use a spudger to pry the chrome cap from the base of the toothbrush.

Step 3



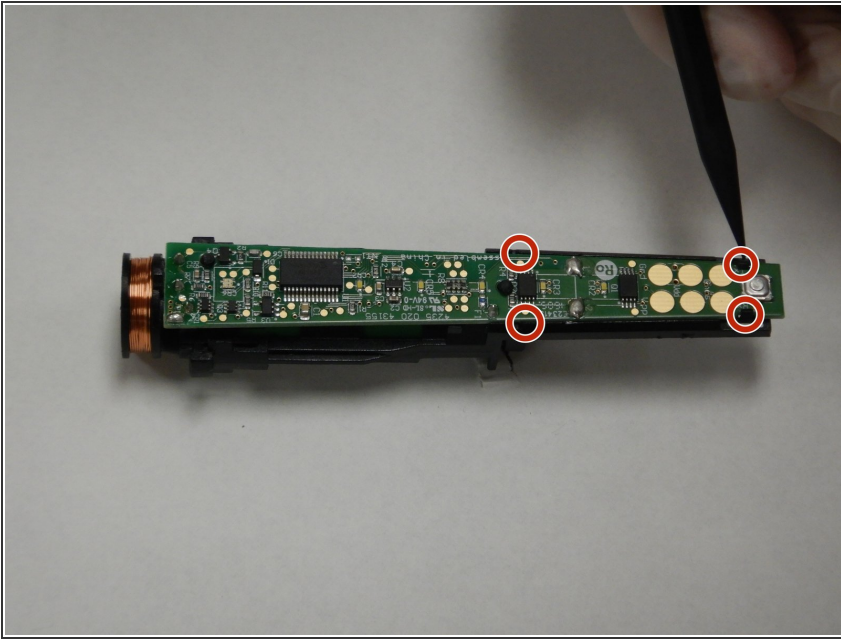
- Invert the toothbrush and apply pressure against the metal tip until the internals and casing separate.
- Remove the internals from the casing.

Step 4



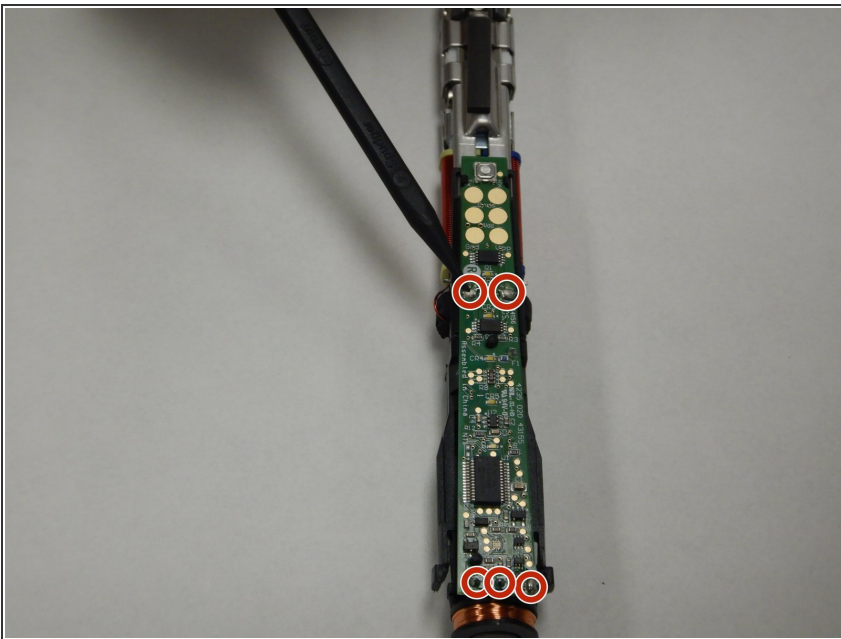
- Remove the rubber covers from the circuit board and battery.

Step 5



- Carefully free the top end of the circuit board from the plastic clips holding it in place.

Step 6



- Use the soldering iron to desolder the terminals marked F1, C5, R7, R6, and JP1.
- ⓘ Check out our [How to Solder and Desolder Connections](#) guide for help with soldering best practices!
- Remove the circuit board.

To reassemble your device, follow these instructions in reverse order.