



Philips Sonicare DiamondClean Spring Replacement

This guide helps users replace the spring on the Phillips Sonicare Dimaondclean Toothbrush.

Written By: Caleb Watson





TOOLS:

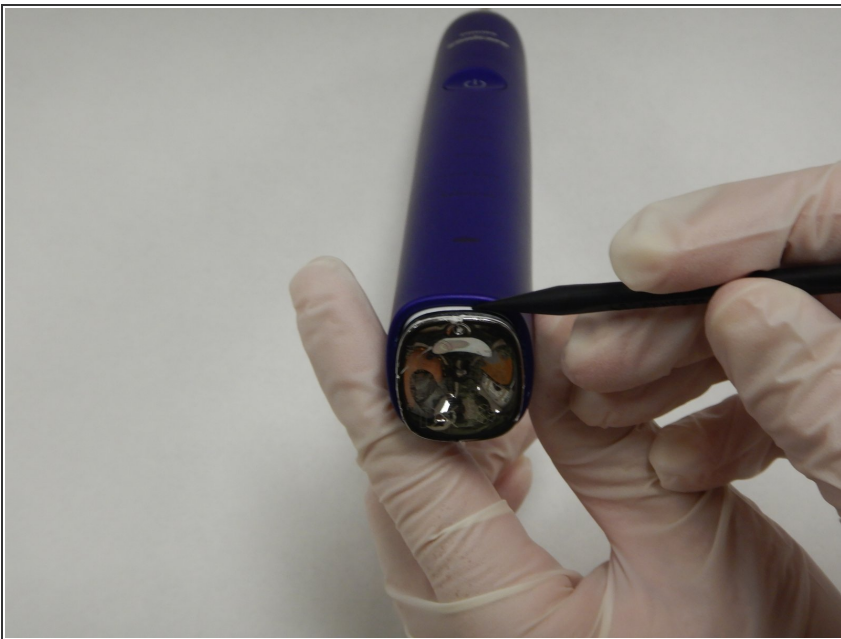
- [Spudger](#) (1)
-

Step 1 — Spring



- Pull the toothbrush head off the toothbrush.

Step 2



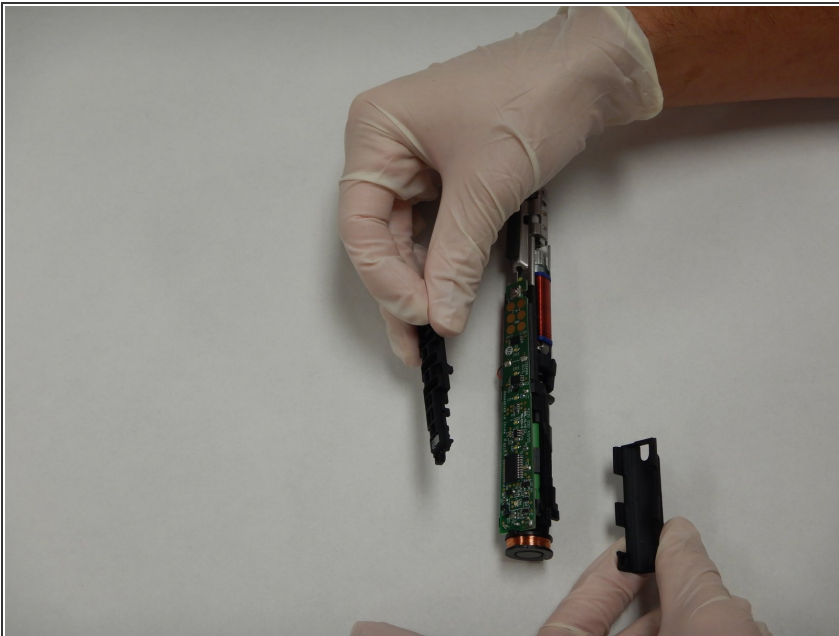
- Use a spudger to pry the chrome cap from the base of the toothbrush.

Step 3



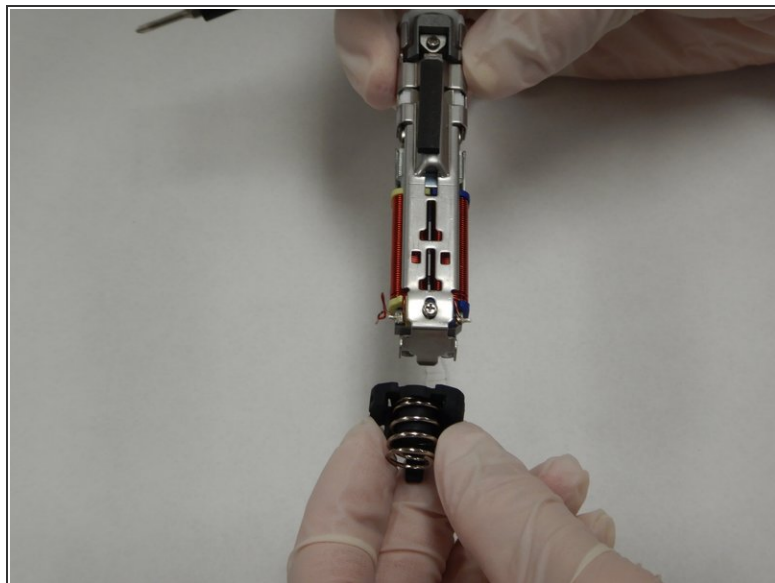
- Invert the toothbrush and apply pressure against the metal tip until the internals and casing separate.
- Remove the internals from the casing.

Step 4



- Remove the rubbers covers from the circuit board and battery.

Step 5



- Separate the upper and lower components by sliding the circuit board section and motor section away from each other.
- Remove the spring.

To reassemble your device, follow these instructions in reverse order.