



Philips Sonicare DiamondClean Motor Replacement

This guide helps users replace the motor on the Phillips Sonicare Dimaondclean Toothbrush.

Written By: Caleb Watson



INTRODUCTION

This guide will show you how to replace the motor on your Philips Sonicare DiamondClean electric toothbrush. If the motor fails to produce movement or makes excessive noise during function, you may be able to restore your toothbrush by replacing the motor. The motor will need to be desoldered from the circuit board in order to be removed, so be sure to check out our [How to Solder and Desolder Connections](#) guide if you are unfamiliar with best practices!



TOOLS:

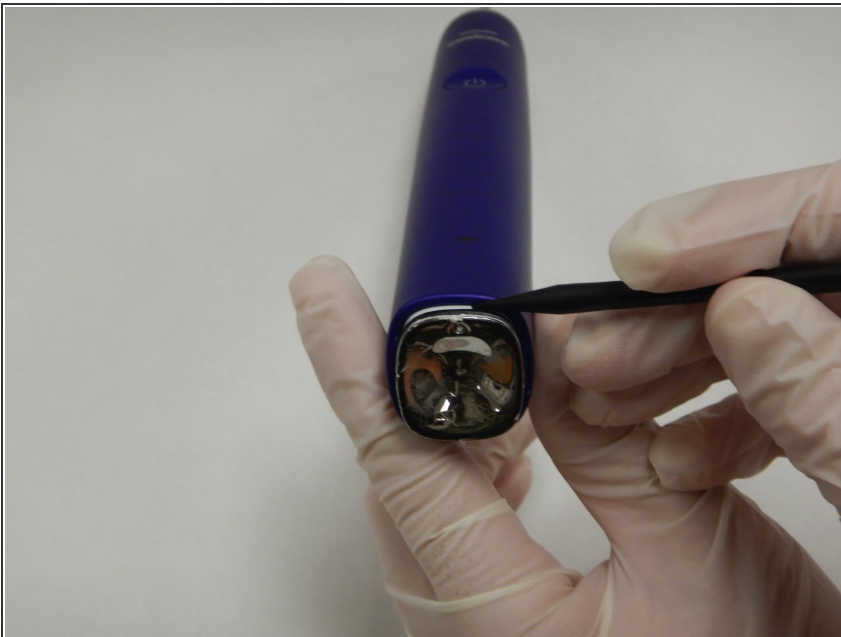
- [Soldering Iron](#) (1)
 - [Spudger](#) (1)
 - [Phillips #00 Screwdriver](#) (1)
-

Step 1 — Motor



- Pull the toothbrush head off the toothbrush.

Step 2



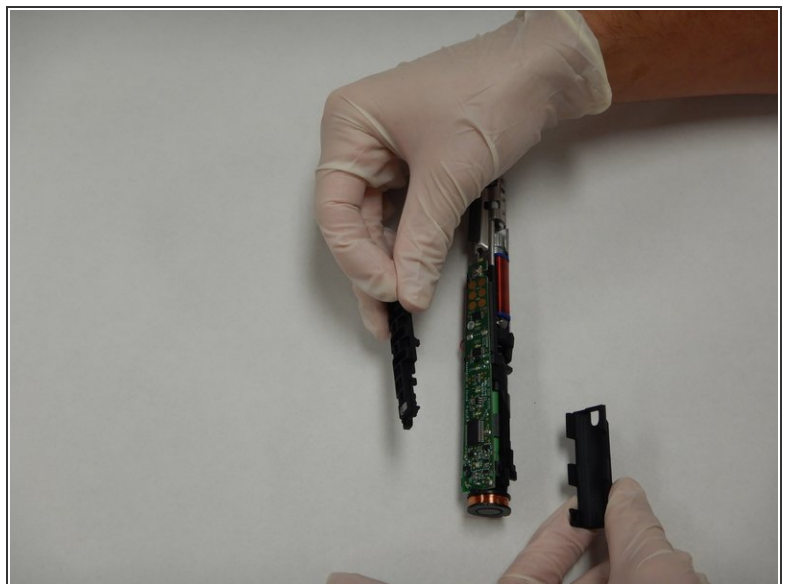
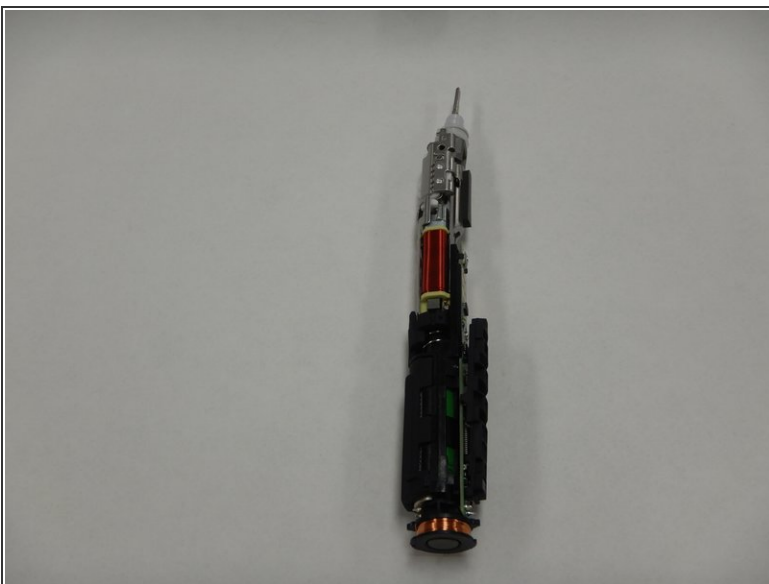
- Use a spudger to pry the chrome cap from the base of the toothbrush.

Step 3



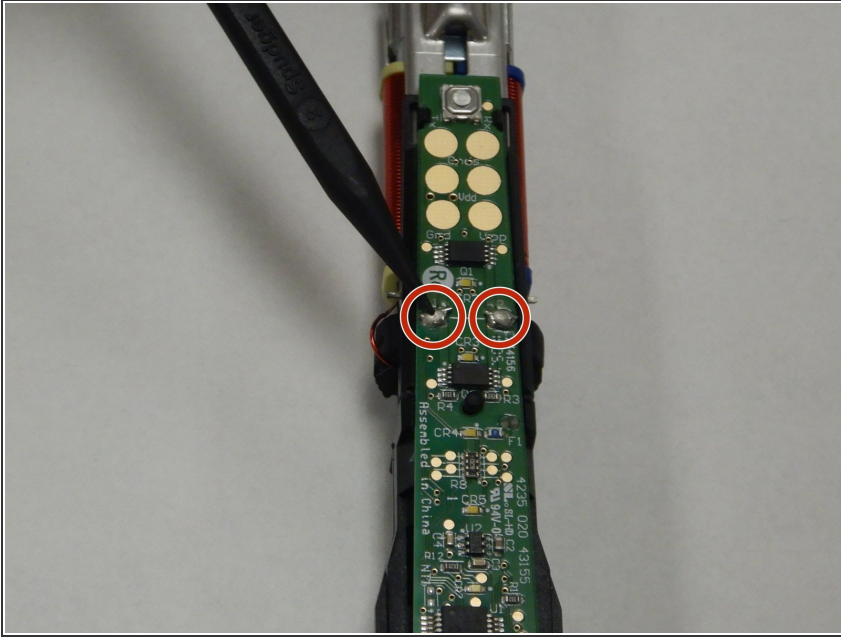
- Place the toothbrush upside down on a solid object and firmly, but gently, push down on the toothbrush until the internal components and case separate.
- ⓘ Note that there are clips inside the case but they are hard to access and unneeded to separate the components.

Step 4



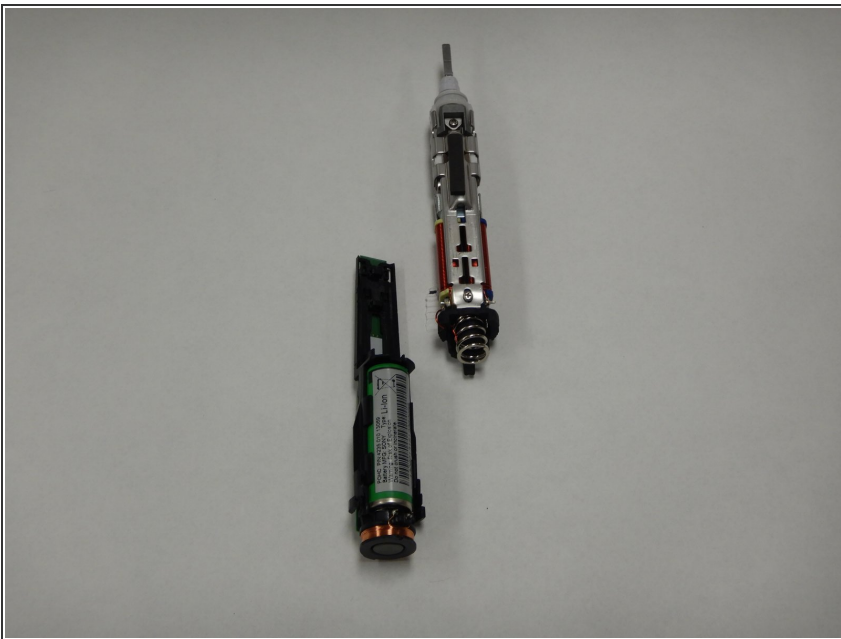
- Remove the rubber covers from the circuit board and battery.

Step 5



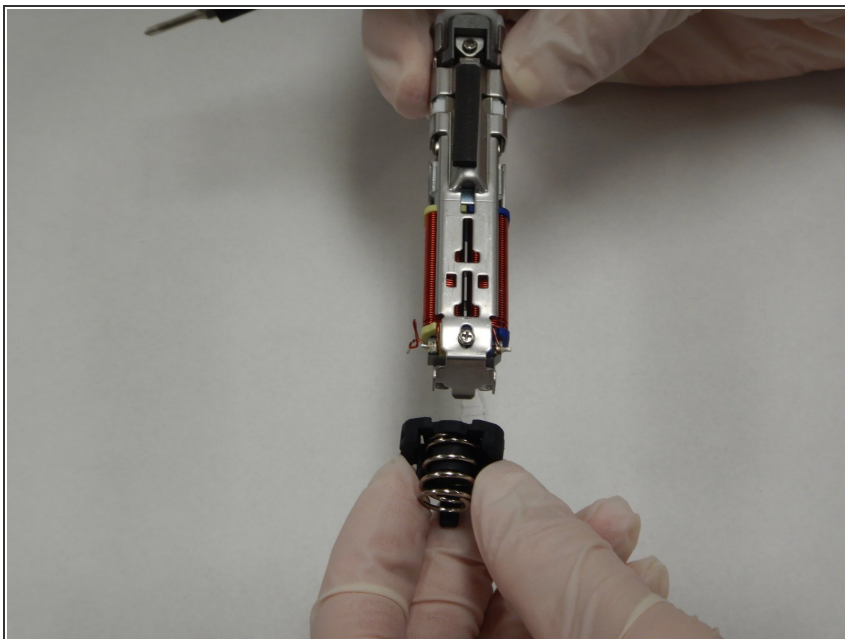
- Using a soldering iron, remove the solder from the positions marked 1 and 2 on the circuit board.
- ① Check out our [How to Solder and Desolder Connections](#) guide for help with soldering best practices!

Step 6



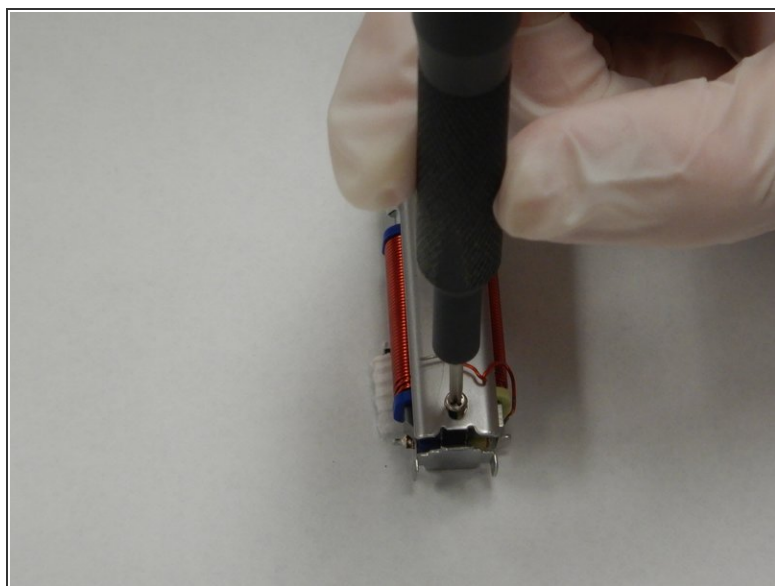
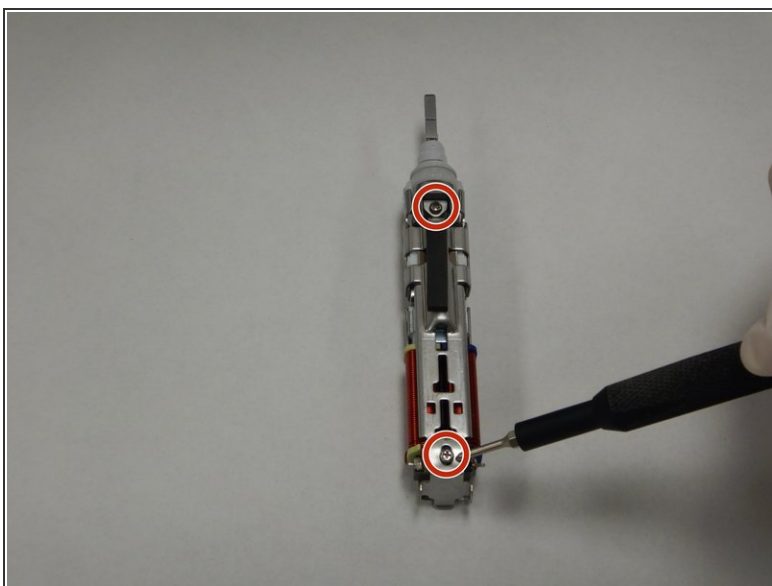
- Slide and separate the two components of the internals from each other.

Step 7



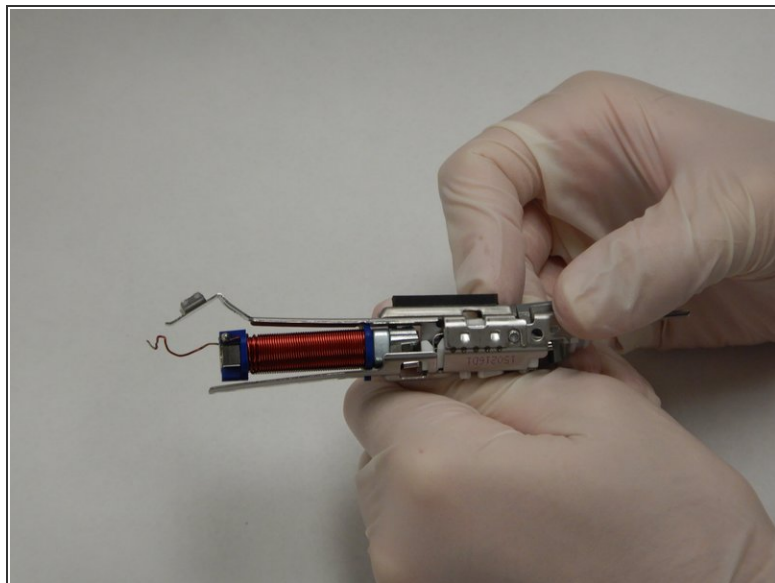
- Gently remove the spring and rubber component.

Step 8



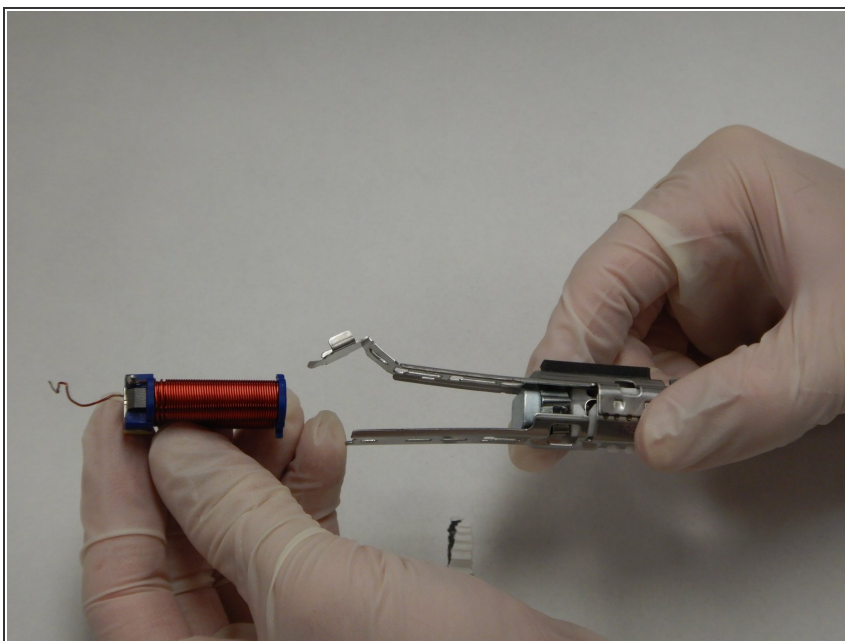
- Remove the two 4mm Phillips #00 screws on both sides of the upper component.

Step 9



- Gently bend and position the brackets to remove the motor.

Step 10



- Remove the motor and replace.

To reassemble your device, follow these instructions in reverse order.