



Samsung Galaxy S20 Plus Front-Facing Camera Module Replacement

Follow this guide to replace the front-facing...

Written By: Tarun Thiruma



INTRODUCTION

Follow this guide to replace the front-facing camera module for the Galaxy S20 Plus.

The removal of the camera module is tricky and may result in the destruction of the module. If you plan on reusing the camera module, take care and heed all warnings carefully.

You'll need replacement adhesive in order to complete this repair.

TOOLS:


[iOpener](#) (1)
[Suction Handle](#) (1)
[iFixit Opening Picks \(Set of 6\)](#) (1)
[Phillips #00 Screwdriver](#) (1)
[Tweezers](#) (1)
[Spudger](#) (1)
[Isopropyl Alcohol](#) (1)

PARTS:

[Galaxy S20+ Front Camera](#) (1)
[Tesa 61395 Tape](#) (1)

Step 1 — Heat the bottom edge



 **Unplug and power off your phone before you begin.**

- [Heat an iOpener](#) and apply it to the **back cover's bottom edge** for two minutes.
- ⓘ A hair dryer, heat gun, or hot plate may also be used, but be careful not to overheat the phone—the display and internal battery are both susceptible to heat damage.

Step 2 — Separate the bottom edge adhesive



- Apply a suction cup to the back of the phone, as close to the center of the bottom edge as possible.
 - ① If your display is badly cracked, covering it with a layer of clear packing tape may allow the suction cup to adhere. Alternatively, very strong tape may be used instead of the suction cup. If all else fails, you can superglue the suction cup to the broken glass.
 - Pull on the suction cup with strong, steady force to create a gap between the back cover and the frame.
 - Insert the point of an opening pick into the gap.
 - ① Due to tight tolerances, this may take multiple attempts of reheating with the iOpener and separating with the suction cup before you get it right.
 - ① If you are having trouble creating a gap, apply more heat to the edge and try again.
- ⚠ Do not apply excessive force with the pick, or you risk cracking the back cover glass.**

Step 3



- Slide the pick back and forth along the bottom edge to slice through the adhesive.
⚠ Do not attempt to cut the adhesive near the corners of the phone where the glass is curved or you risk cracking the glass panel.
- Leave your opening pick in the seam to prevent the adhesive from resealing.

Step 4 — Heat the left edge



- Apply a heated iOpener to the left edge of the back cover for two minutes.

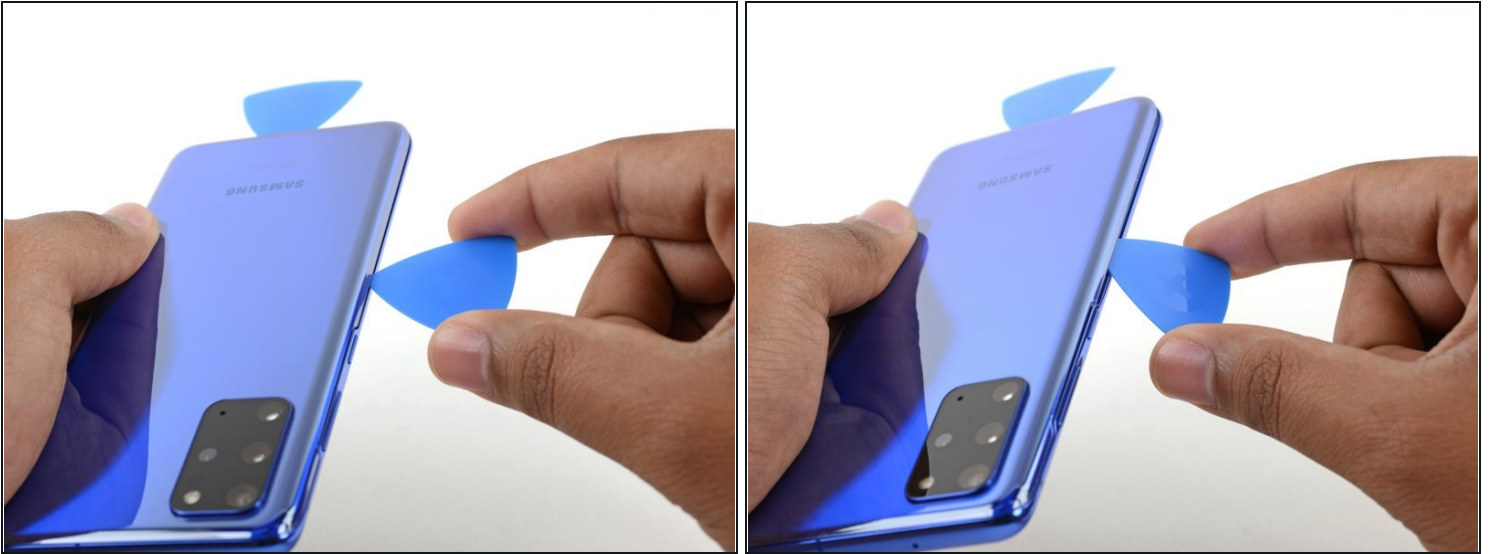
Step 5 — Separate the left edge adhesive



- Apply a suction cup to the back of the phone, as close to the center of the left edge as possible.
- Pull on the suction cup with strong, steady force to create a gap between the back cover and the frame.
- Insert the point of an opening pick into the gap.
 - ① As the glass on this edge is curved, you won't be able to insert this pick very far. As long as the very tip of the pick is underneath the glass's edge, you will be able to proceed.
 - ① Due to tight tolerances, this may take multiple attempts.
 - ① If you are having trouble creating a gap, apply more heat to the edge and try again.
- You can try also applying a few drops of high concentration (over 90%) isopropyl alcohol into the seam to help loosen the adhesive.

⚠ Do not apply excessive force with the pick, or you risk cracking the back cover glass.

Step 6



- Once the pick is underneath the glass's edge, tilt it downward and insert it further to fully separate the back cover's adhesive.

Step 7



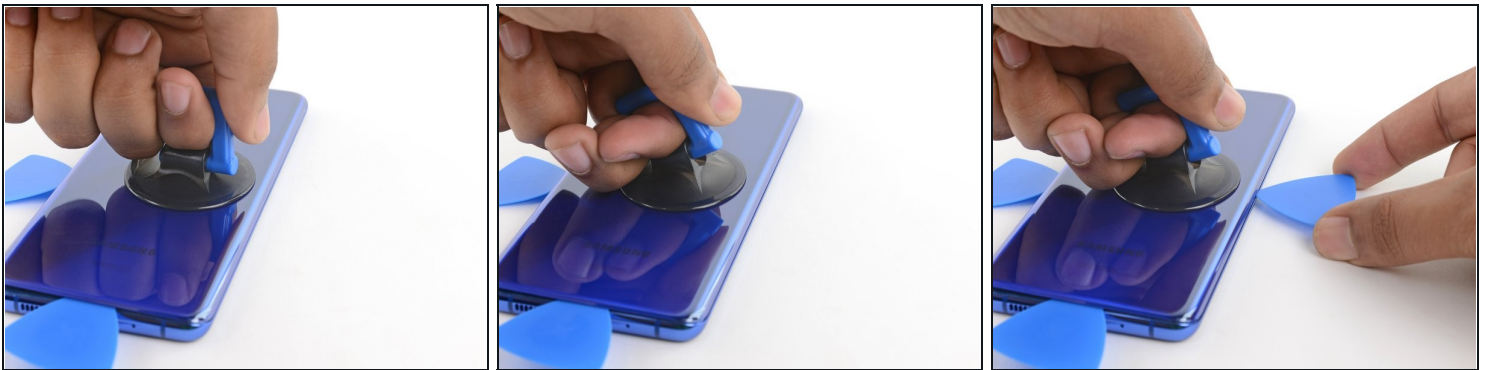
- Slide the pick all along the left edge of the phone to separate the back cover's adhesive.
⚠ Take care when sliding across the ridge in the frame surrounding the volume and power buttons—the cutout in the glass may make it more prone to cracking.
- Leave your pick under the left edge of the glass to prevent the adhesive from resealing.

Step 8 — Heat the right edge



- Apply a heated iOpener to the right edge of the back cover for two minutes.
 - ⓘ A hair dryer, heat gun, or hot plate may also be used, but be careful not to overheat the phone—the display and internal battery are both susceptible to heat damage.

Step 9 — Separate the right edge adhesive



- Apply a suction cup to the back of the phone, as close to the center of the right edge as possible.
- Pull on the suction cup with strong, steady force to create a gap between the back cover and the frame.
- Insert the point of an opening pick into the gap.
 - ⓘ Like with the previous edge, you will need to tilt the opening pick downward to fully insert it underneath the back cover.

Step 10



- Slide the pick all along the right edge of the phone to separate the back cover's adhesive.
- Leave your pick under the right edge of the glass near the top of the device to prevent the adhesive from resealing.
 - ⓘ As you do this, the back cover may release one or both of the other picks and allow them to fall free. If this occurs, set the pick(s) aside as the bottom edge shouldn't reseal from this point onward.

Step 11 — Heat the top edge



- Apply a heated iOpener to the top edge of the back cover for two minutes.

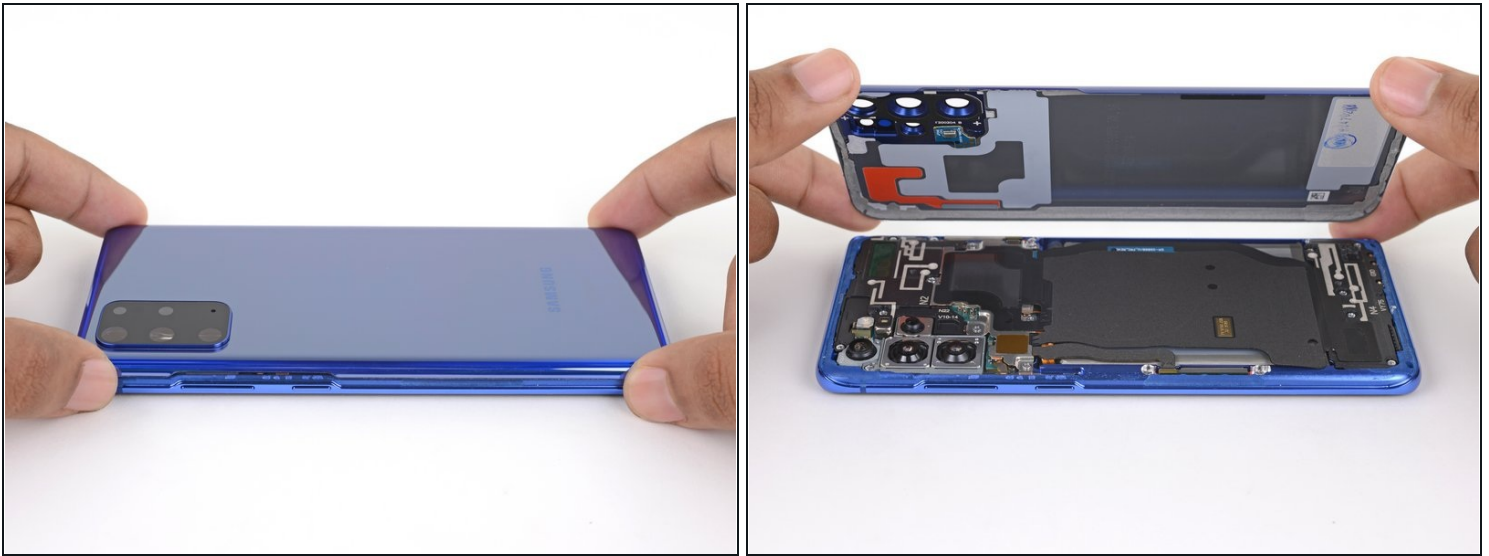
Step 12 — Separate the top edge adhesive



⚠ The glass near the corners of the back cover is curved and very susceptible to cracking. Be gentle during this step to prevent damaging your back cover.

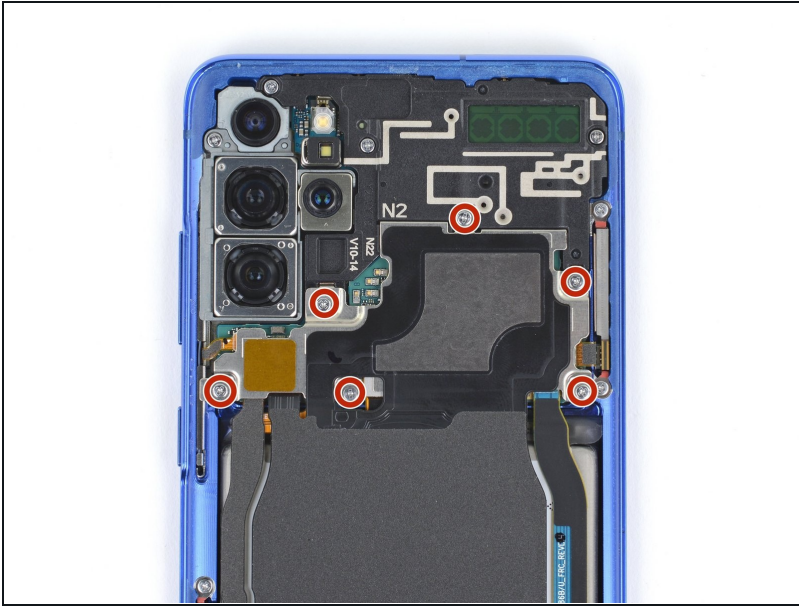
- Gradually slide the pick from the right edge of the device around the top right corner.
- Continue slicing along the top edge all the way around to the left edge to fully separate the back cover adhesive.
- ⓘ If the slicing becomes difficult at any point, stop and reapply heat before continuing.

Step 13 — Remove the back cover



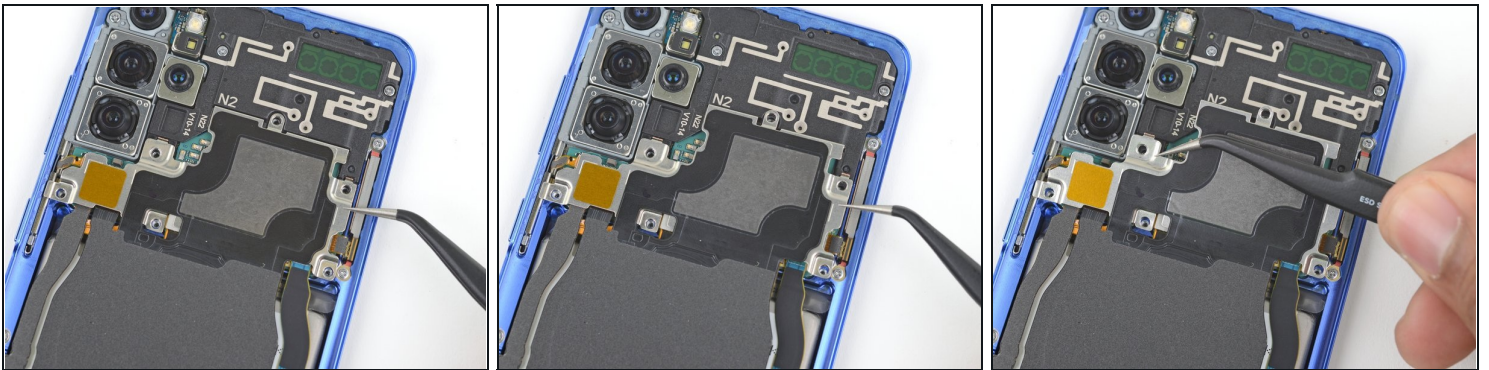
- Lift the back cover slowly. Use opening picks to slice any remaining adhesive.
 - Remove the back cover.
- ★ During reassembly:
- This is a good point to power on your phone and test all functions before sealing it up. Be sure to power your phone back down completely before you continue working.
 - Remove any adhesive chunks with a pair of [tweezers](#) or your fingers. Apply heat if you're having trouble separating the adhesive.
 - If you're using Samsung custom-cut adhesives, [follow this guide](#).
 - If you're using double-sided tape, [follow this guide](#).

Step 14 — Unfasten the motherboard bracket



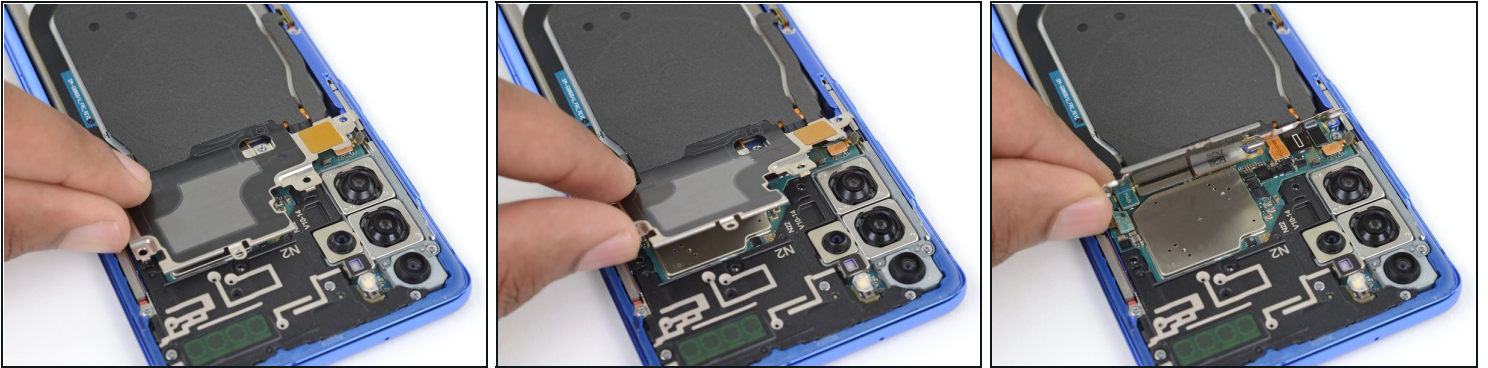
- Use a Phillips #00 screwdriver to remove the six 4 mm-long screws securing the motherboard bracket.
- ① Throughout this repair, [keep track of each screw](#) and make sure it goes back exactly where it came from.

Step 15 — Unclip the motherboard bracket



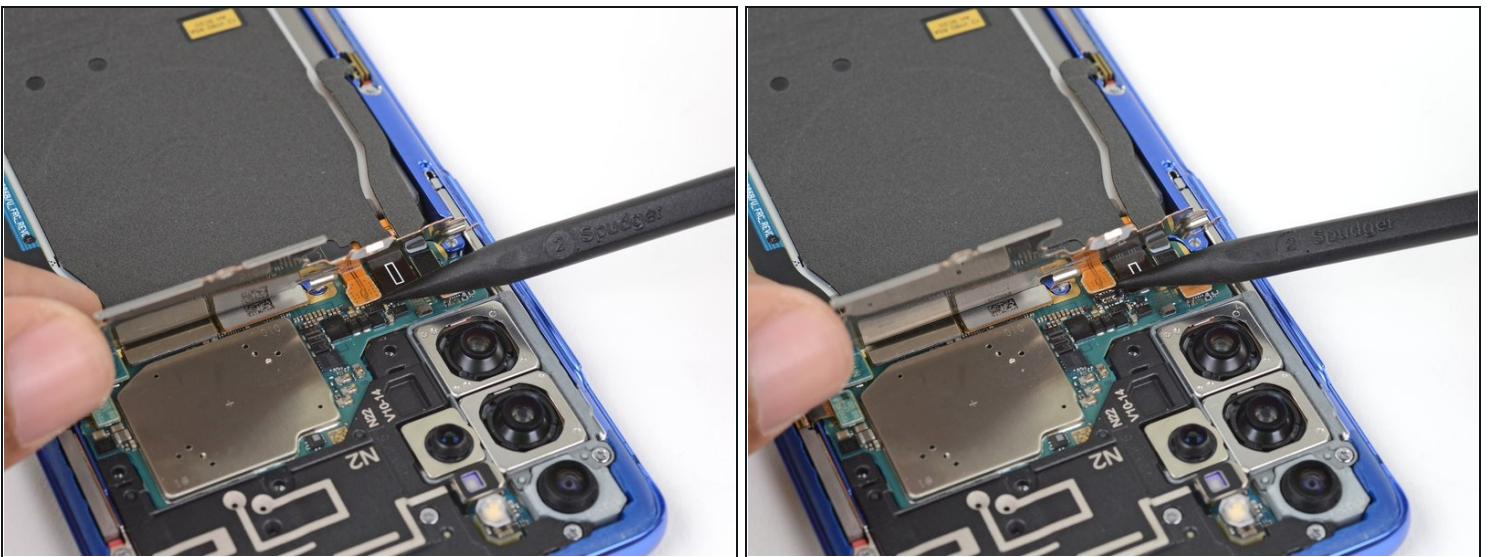
- Use a pair of [tweezers](#) to gently pull up and unclip the motherboard bracket from the plastic midframe.
- ⚠ Do not completely remove the bracket yet, as its still attached to the wireless charging coil.

Step 16



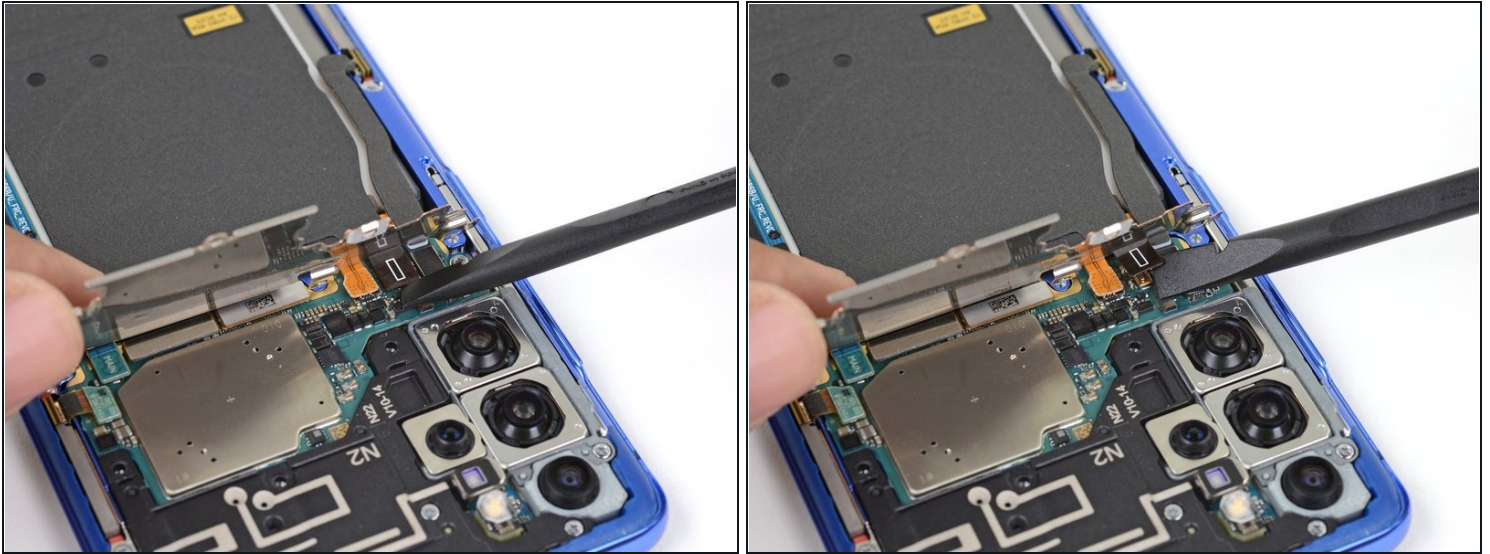
- Gently tilt up the motherboard bracket so the orange battery connector is accessible.

Step 17 — Disconnect the battery



- Use a spudger to pry up and disconnect the battery connector.
⚠ When you disconnect connectors like these, be careful not to dislodge the small surface-mounted components surrounding the socket.

Step 18 — Disconnect the wireless charging coil



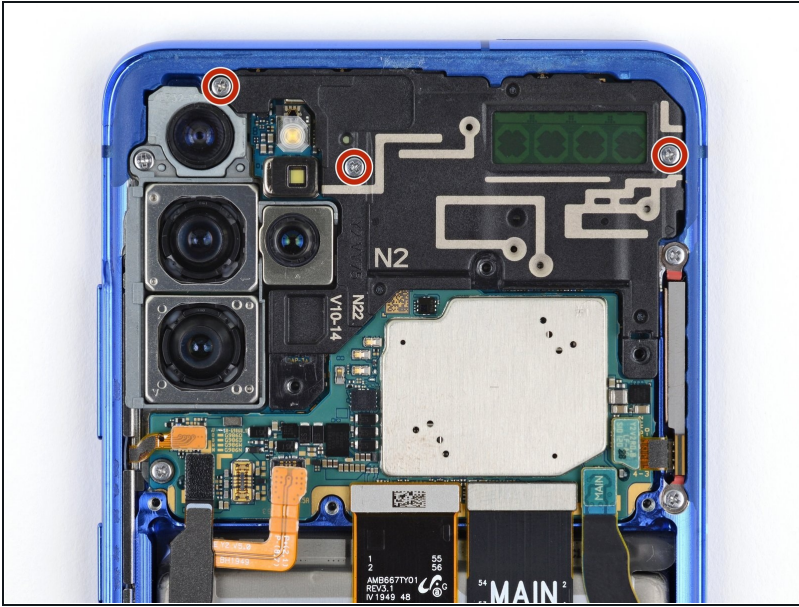
- Use a spudger to pry up and disconnect the wireless charging coil connector.

Step 19 — Remove the wireless charging coil



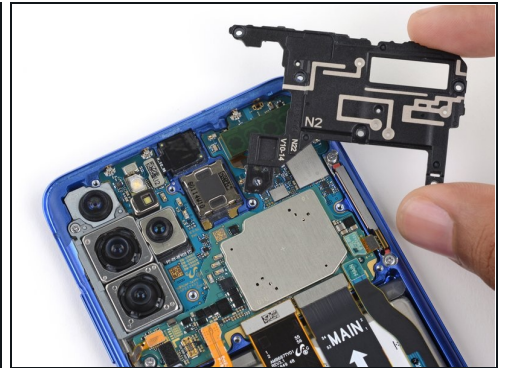
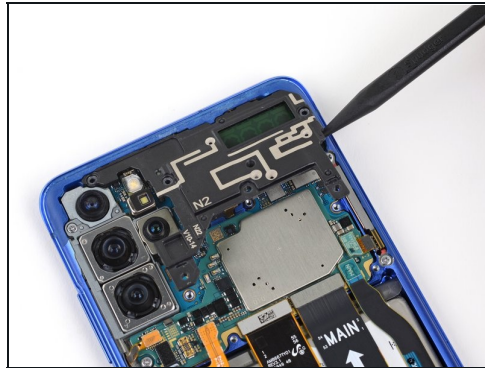
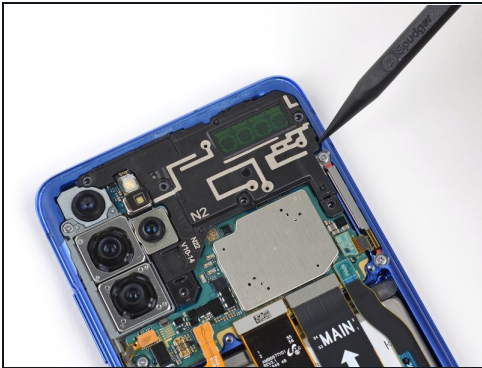
- Use a pair of [tweezers](#) to gently peel the wireless charging coil away from the device.
 - Remove the wireless charging coil.
- ☒ During reassembly, first reconnect the charging coil and battery connectors and refasten the motherboard bracket screws to properly align everything into place, then firmly press the coil pad down to adhere it.

Step 20 — Unfasten the upper midframe



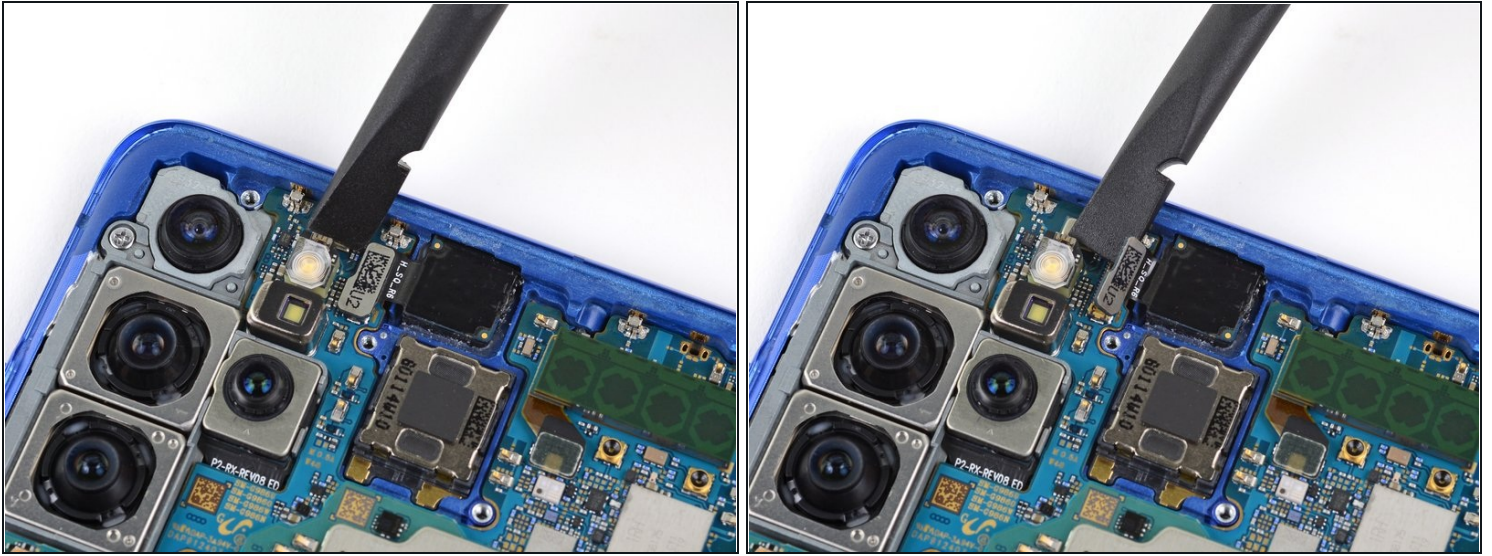
- Use a Phillips #00 screwdriver to remove the three 4 mm-long screws securing the upper midframe.

Step 21 — Remove the upper midframe



- Insert the pointed end of a spudger into the notch on the right side of the upper midframe and pry up to release the clips holding it in place.
- Remove the upper midframe.

Step 22 — Disconnect the front-facing camera



- Use a spudger to pry up and disconnect the front-facing camera flex cable from the motherboard.
- ☑ To re-attach [press connectors](#) like this one, carefully align and press down on one side until it clicks into place, then repeat on the other side. Do not press down on the middle. If the connector is misaligned, the pins can bend, causing permanent damage.

Step 23 — Soften the camera module adhesive



- Apply high concentration (over 90%) isopropyl alcohol to the gaps around the front-facing camera module to help soften the adhesive securing it into place.
- Allow the alcohol 1-2 minutes to penetrate the adhesive.

Step 24 — Remove the front-facing camera module



- Use the flat end of a spudger to pry up bottom edge of the front-facing camera module.
 - ⓘ The camera module is heavily cemented in place with a rubbery adhesive. If it doesn't budge even after using alcohol, you may need to cut the adhesive with a craft or utility knife to help release the module, or you risk damaging it during removal.
 - ⚠ It is possible to pry up only the [internal sensor and hardware components](#) of the module without its plastic casing, which may damage the module. If you are replacing the module, this isn't an issue, and the following steps will describe how to remove the plastic casing separately.
 - ⓘ If you must retain the camera module's functionality, you can try to reseal the sensor hardware back into its plastic casing before cutting and prying again, or proceed to the next step and reseal the sensor after removing the casing by itself.
- Remove the front-facing camera module.
 - ★ It is possible to reuse the existing camera module adhesive during reassembly, but if you need to replace it, you can do so with a [pre-cut adhesive sheet](#).

Step 25 — Remove the camera module casing



- If you removed the camera module's internal components without its plastic casing, apply a few drops of high concentration (over 90%) isopropyl alcohol around the edges of the casing to soften the adhesive securing it into place.
 - ⓘ Allow the alcohol 1-2 minutes to penetrate the adhesive.
 - Use a pair of [tweezers](#) to remove the plastic camera casing.
-

Compare your new replacement part to the original part—you may need to transfer remaining components or remove adhesive backings from the new part before installing.

To reassemble your device, follow the above steps in reverse order.

After you've completed the repair, [follow this guide](#) to test your repair.

Take your e-waste to an [R2 or e-Stewards certified recycler](#).

Repair didn't go as planned? Check out our [Answers community](#) for troubleshooting help.