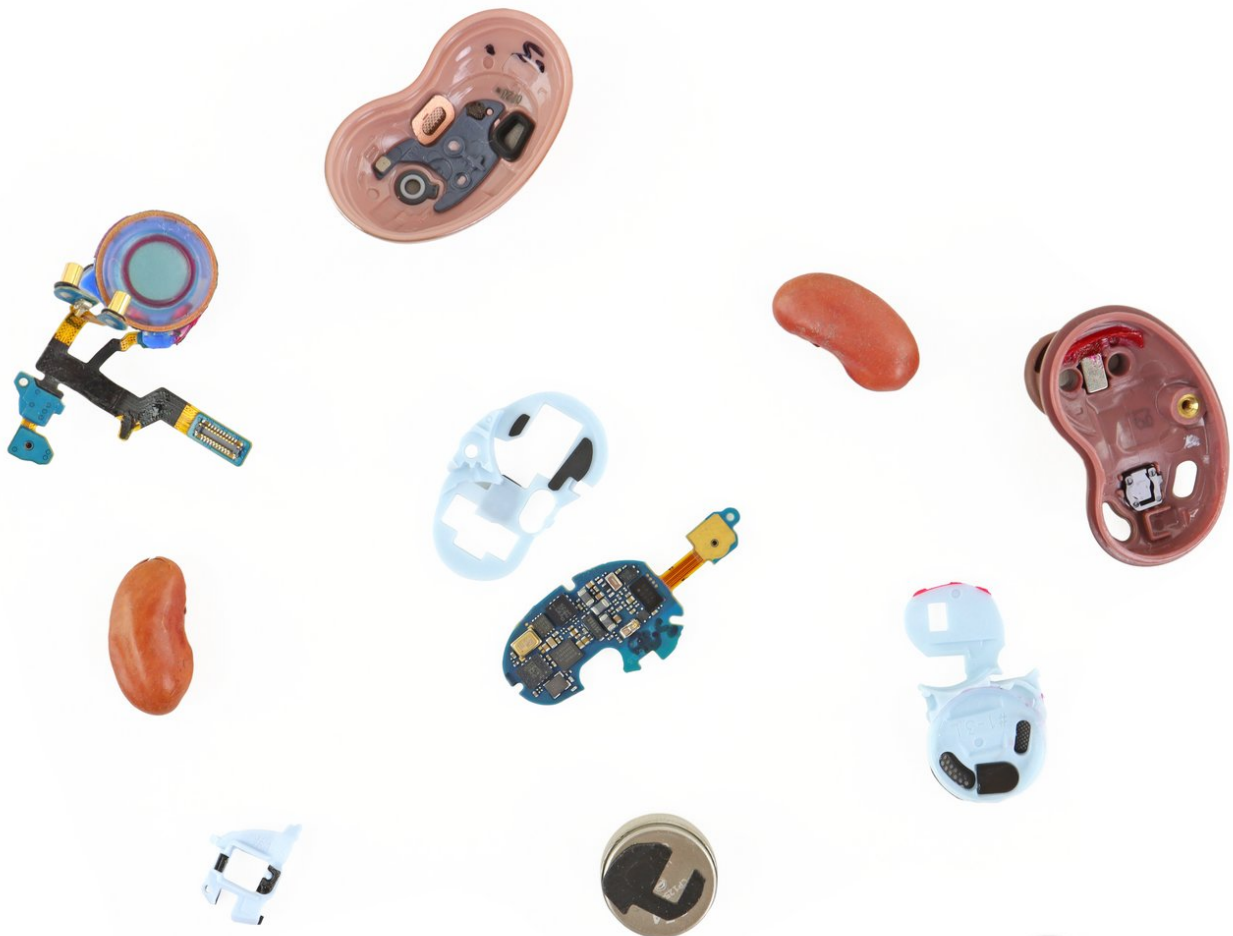




Samsung Galaxy Buds Live Teardown

An iFixit video teardown of Samsung's Galaxy Buds Live. Colloquially (and correctly) known as the Galaxy Beans.

Written By: Taylor Dixon



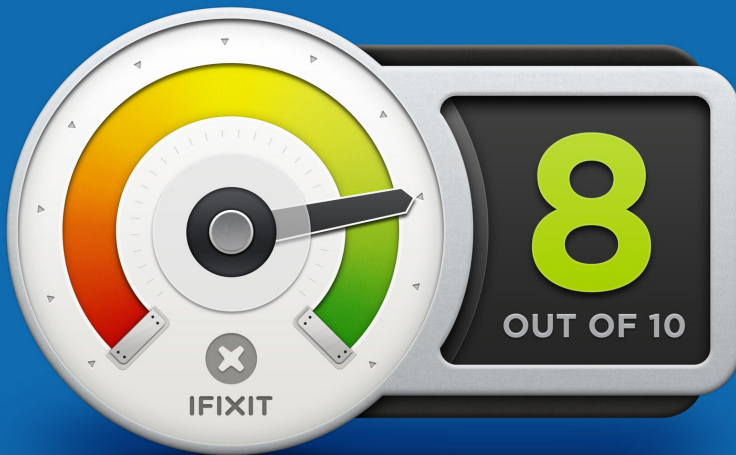


TOOLS:

- [Small Vise](#) (1)
- [Phillips #00 Screwdriver](#) (1)
- [iFixit Opening Picks set of 6](#) (1)
- [Spudger](#) (1)
- [Tweezers](#) (1)

Step 1 — Final Thoughts

REPAIRABILITY SCORE:



- The Samsung Galaxy Buds Live earn an 8 out of 10 on our repairability scale (10 is the easiest to repair):
 - All enclosures are held together with clips instead of glue, allowing for non-destructive opening procedures.
 - Disassembly can be accomplished with common tools and a Phillips screwdriver.
 - All batteries are easily accessible and replaceable.
 - Most other major components (circuit boards, speaker drivers, etc.) are relatively modular and can be replaced independently.
 - Adhesive is used to keep many of the internal components together, though it is not excessive and can be reused for reassembly.
- Careful prying is required throughout to separate components without tearing fragile cables or otherwise damaging the buds.