



# Samsung Galaxy A51 Midframe Replacement

Prerequisite for removing or replacing the midframe in the Samsung Galaxy A51.

Written By: Adriana Zwink



# INTRODUCTION

Prerequisite only! Use this guide to replace the midframe in your Samsung Galaxy A51.



## TOOLS:

- [SIM Card Eject Tool](#) (1)
  - [iOpener](#) (1)
  - [iFixit Opening Picks set of 6](#) (1)
  - [Suction Handle](#) (1)
  - [Phillips #00 Screwdriver](#) (1)
-

## Step 1 — Samsung Galaxy A51 SIM Tray Removal



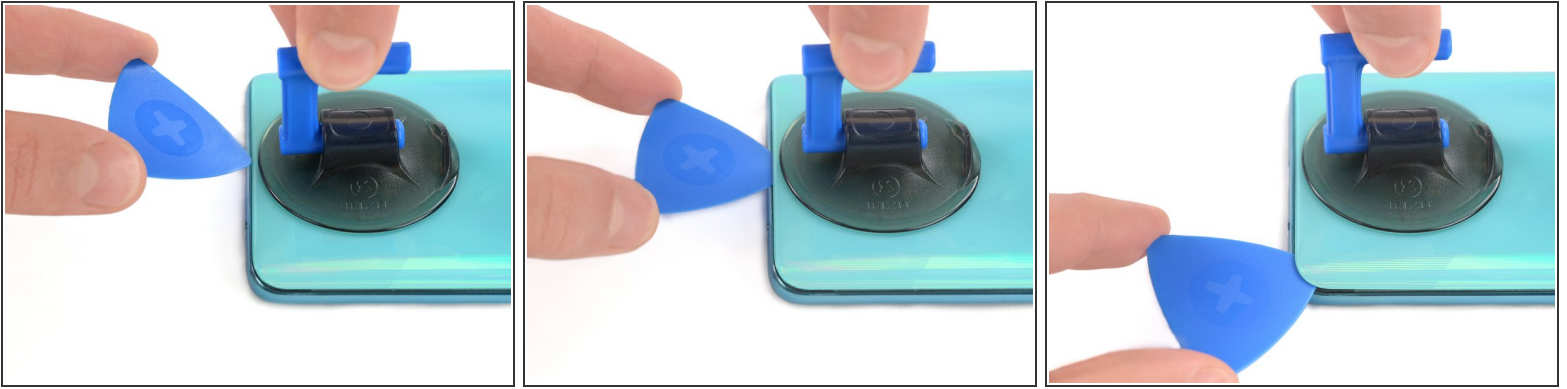
- Insert a SIM card eject tool, a SIM eject bit or a straightened paper clip **into the hole on the SIM tray** located at the left side of the phone.
  - Press firmly to eject the tray.
  - Remove the SIM card tray.
- i** When reinserting the cards, make sure to properly orient them in the tray.

## Step 2 — Back Cover



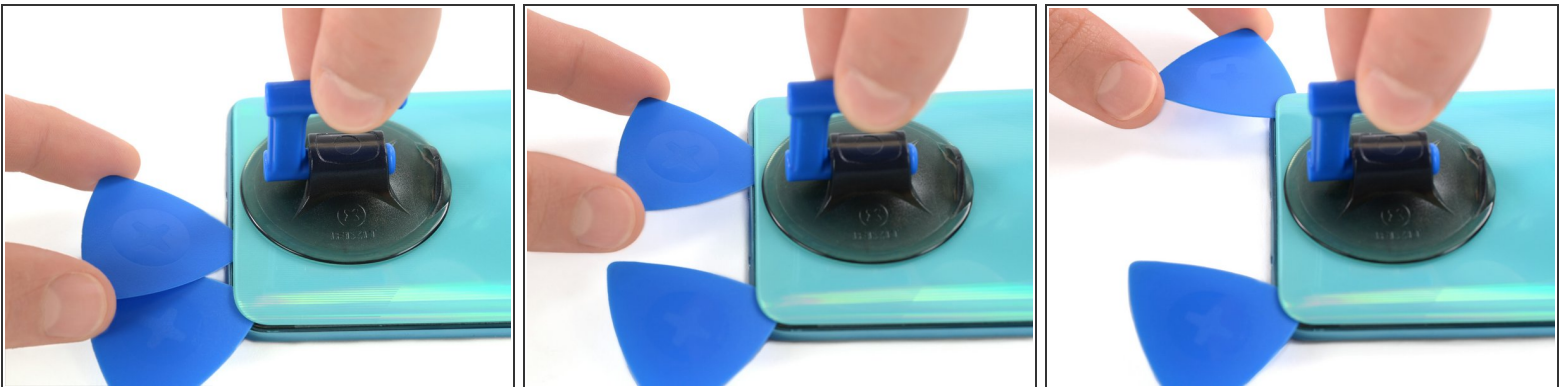
- i** Before beginning this procedure, completely power off your phone.
- Prepare an [iOpener](#) and apply it to the back cover to soften the adhesive.
- i** The adhesive of the Samsung Galaxy A51 is very strong. You can use a hair dryer or a heat gun if you aren't able to open the device with the iOpener.
- !** Be careful not to overheat the phone—the AMOLED display and internal battery are both susceptible to heat damage.

### Step 3



- Insert the tip of an opening pick between the frame and the back cover at the bottom of the phone near the USB-C port.
- If you can't get between the back cover and midframe with your opening pick, you can use a suction handle or [strong tape](#) to pull up the back cover to create a gap.
- Slide the opening pick to the bottom right corner and leave it there.

### Step 4



- Insert a second opening pick and slide it from the bottom right corner to the bottom left corner to cut the adhesive.
- Leave the opening picks in place to prevent the adhesive from resealing.

## Step 5



- Insert a third opening pick under the bottom left corner of the back cover.
  - ❗ If you have any trouble, apply more heat to further soften the adhesive. Follow the iOpener instructions to avoid overheating.
- Slide the opening pick along the left edge of the phone.
- Leave the opening pick in the top left corner to prevent the adhesive from resealing.

## Step 6



- Insert a fourth opening pick under the top left corner of the back cover near the camera.
- Slide the tip of the opening pick along the top edge of the phone to the right corner to cut the adhesive.
- Leave the opening pick in the top right corner to prevent the adhesive from resealing.



## Step 7



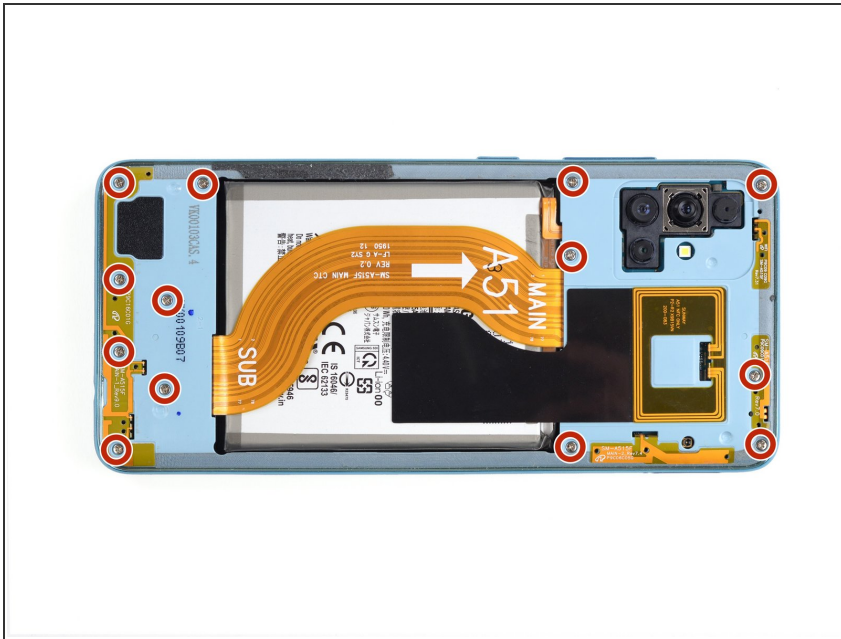
- With opening picks in all four corners, insert a fifth and final opening pick under the top right corner of the back cover.
- Slide the tip of the opening pick along the right edge of the phone to the bottom right corner to cut the remaining adhesive.

## Step 8



- Remove the back cover.
- ☑ After installing the back cover, apply strong, steady pressure to your phone for several minutes to help the adhesive form a good bond—a stack of heavy books works well.

## Step 9 — Midframe



- Remove the thirteen 3 mm Phillips #00 screws securing the midframe.

## Step 10



**i** The midframe is held in place by plastic clips.

- Insert an opening pick between the midframe and front panel assembly on the bottom of the phone near the charge port.
- Slide the opening pick to the left bottom corner to release the plastic clips.
- Slide the opening pick to the bottom right corner to release the rest of the bottom plastic clips.

## Step 11



- Continue sliding the opening pick on the right side of your phone until all plastic clips on the right side are released.

## Step 12



- Slide the opening pick along the top edge to release the top plastic clips.



## Step 13



- Slide the opening pick from the top left corner to the bottom left corner to release the left side's plastic clips.

## Step 14



- Remove the midframe.

To reassemble your device, follow these instructions in reverse order.