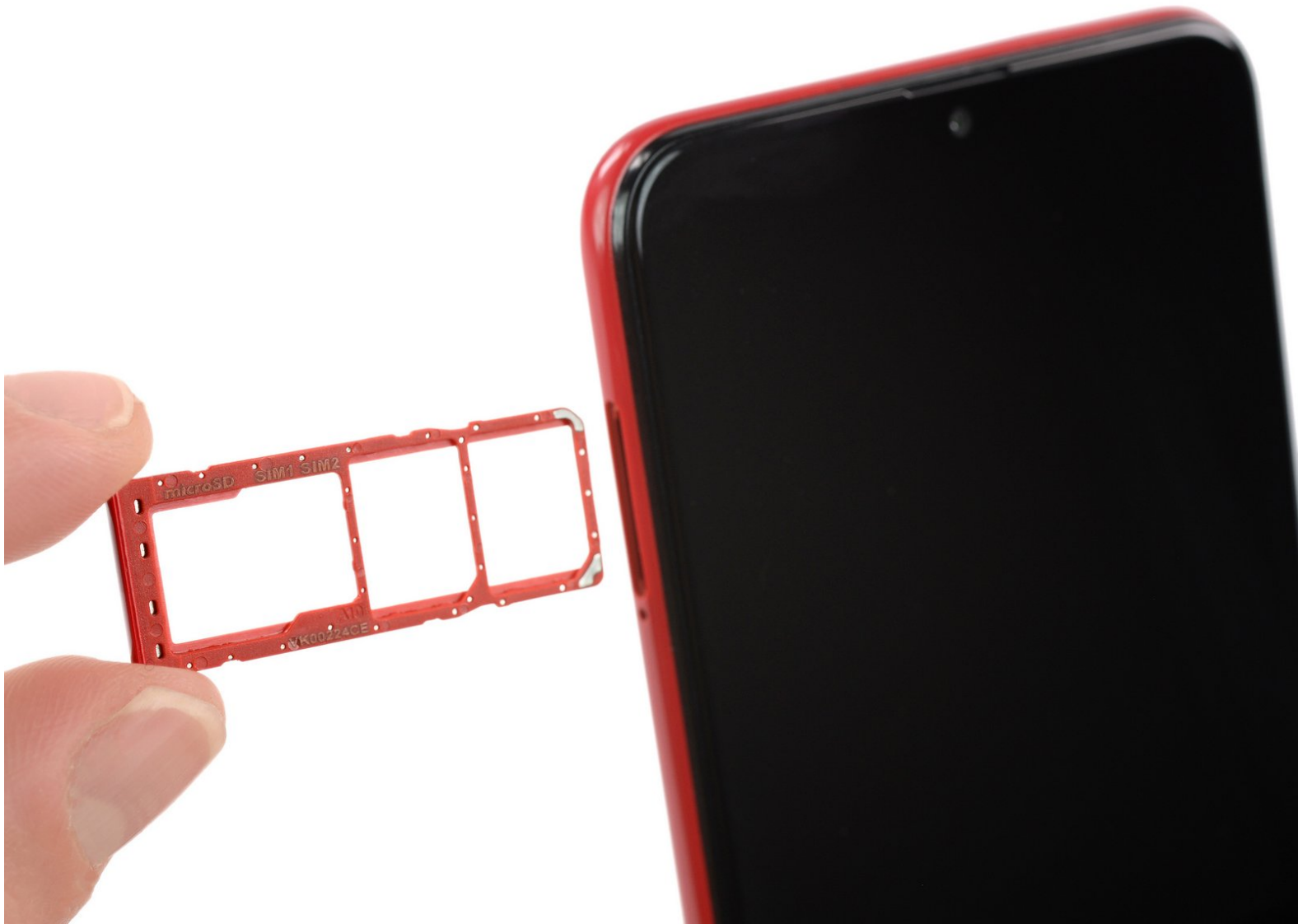




Samsung Galaxy A10 SIM Tray Replacement

How to eject the dual tray to remove or replace the SIM card or microSD card in the Samsung Galaxy A10.

Written By: Adriana Zwink



INTRODUCTION

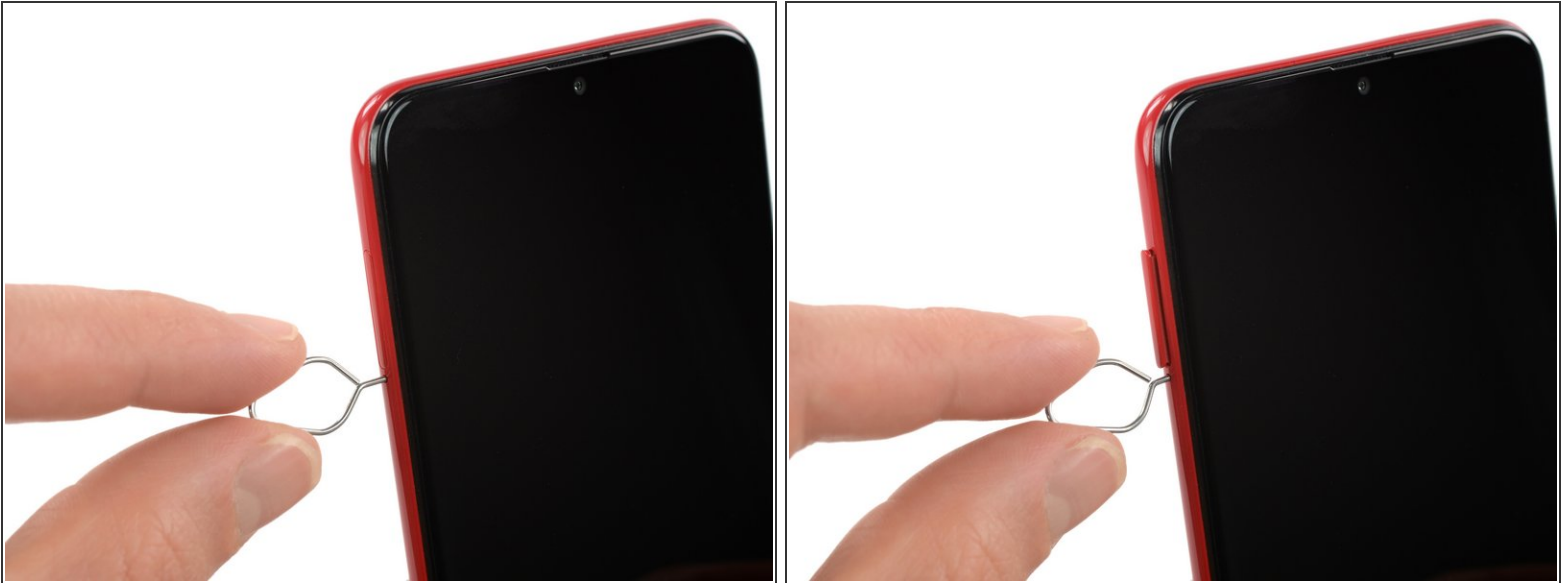
Use this guide to eject the SIM card tray in your Samsung Galaxy A10. Ejecting this hybrid SIM tray allows you to add a microSD memory card, replace the nano SIM card or add a second nano SIM card.



TOOLS:

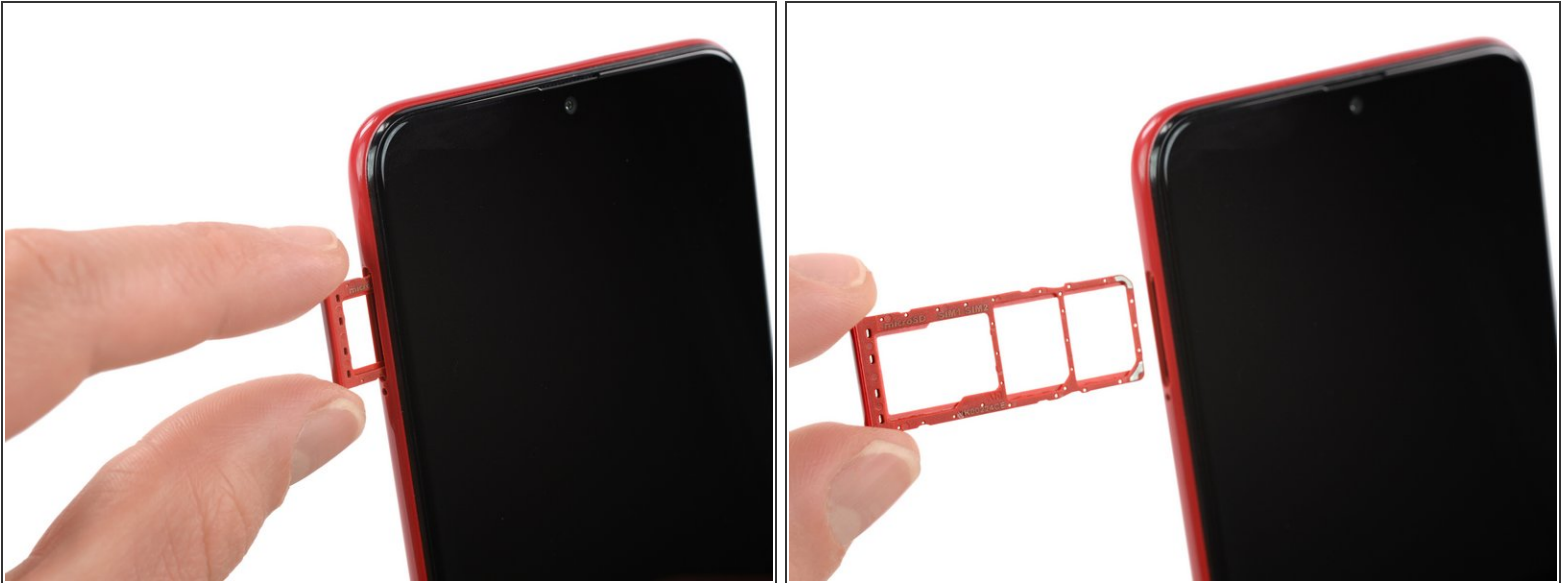
- [SIM Card Eject Tool](#) (1)
-

Step 1 — Samsung Galaxy A10 SIM Tray Replacement



- Insert a SIM card eject tool, a SIM eject bit or a straightened paper clip into the hole on the SIM tray located at the left side of the phone.
- Press firmly to eject the tray.

Step 2



- Remove the SIM card tray.
- ⓘ When reinserting the cards, make sure to properly orient them in the tray.

To reassemble your device, follow these instructions in reverse order.