



# How to Factory Reset Samsung Galaxy Tab A 10.1

A very quick guide on how to factory reset the Samsung Galaxy Tab A 10.1

Written By: Nick Myers

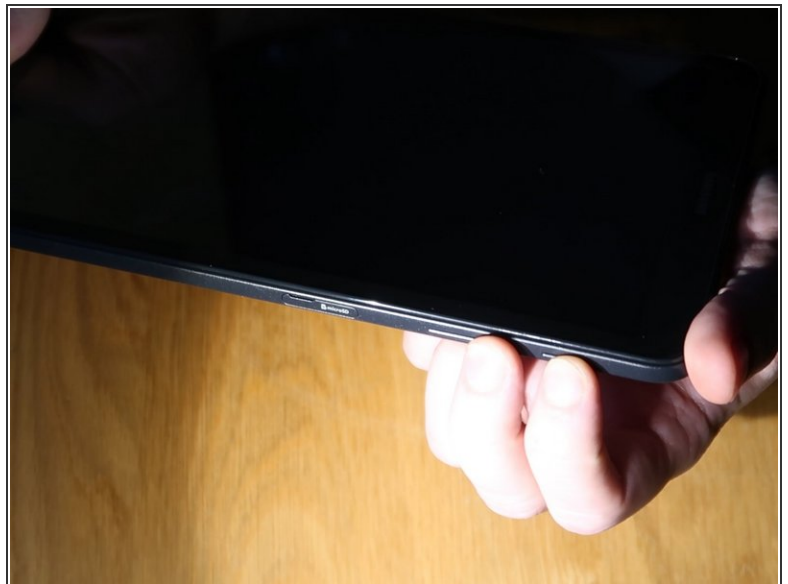
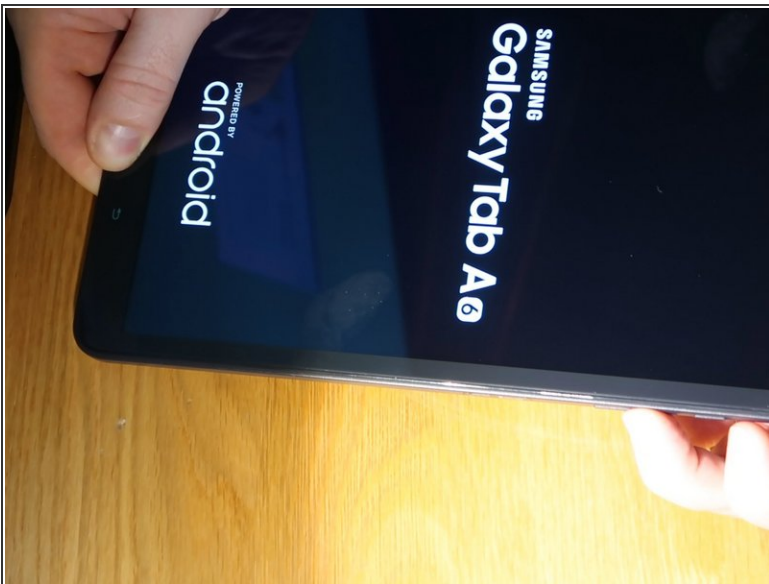


## Step 1 — How to Factory Reset Samsung Galaxy Tab A 10.1



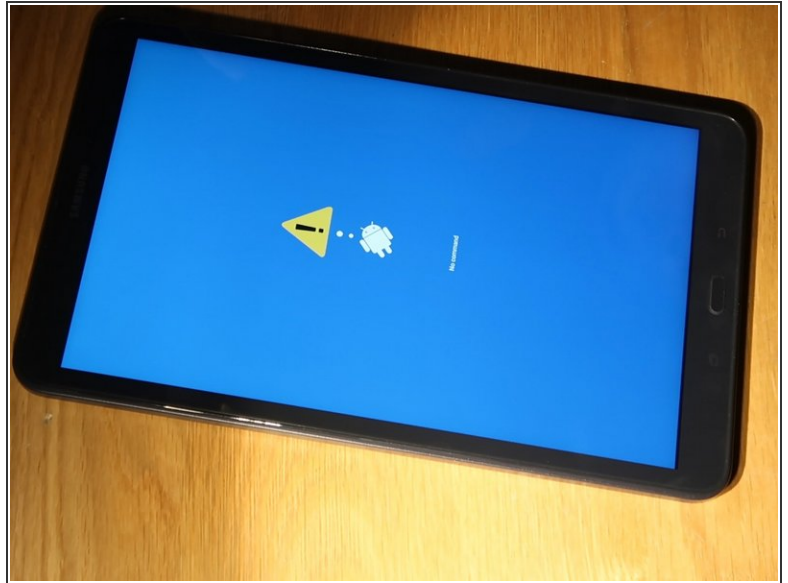
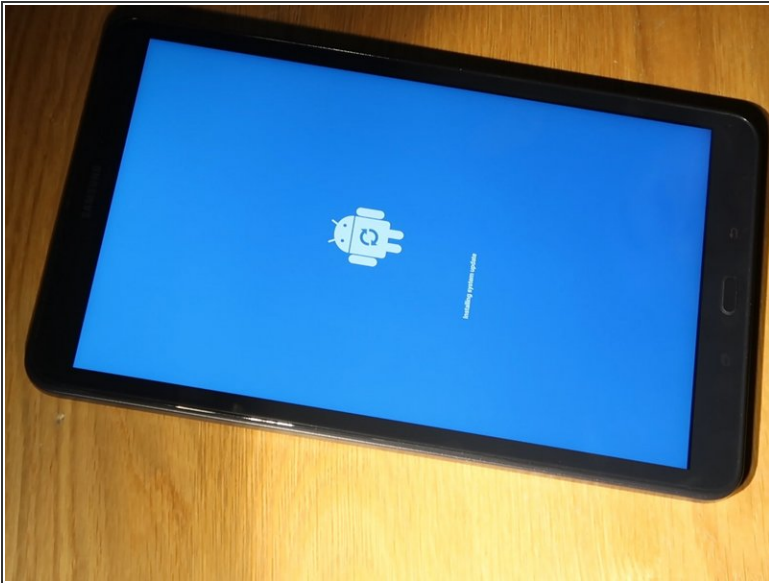
- Turn the tablet off

## Step 2



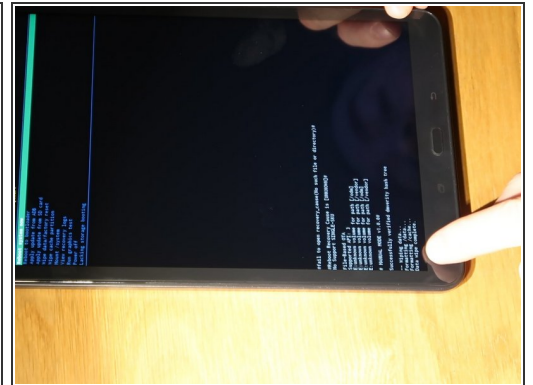
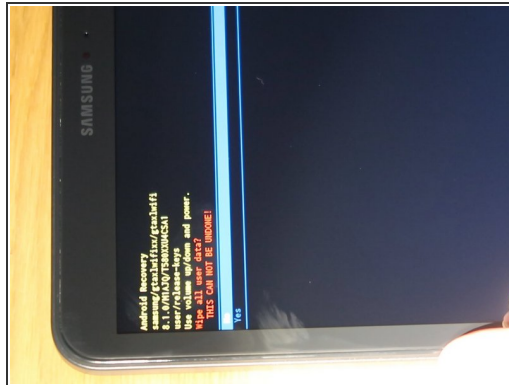
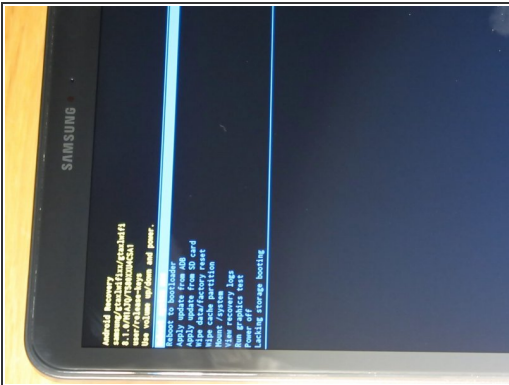
- Hold down the home, power and volume up buttons.
- Once the Samsung logo shows on the screen release the power button

## Step 3



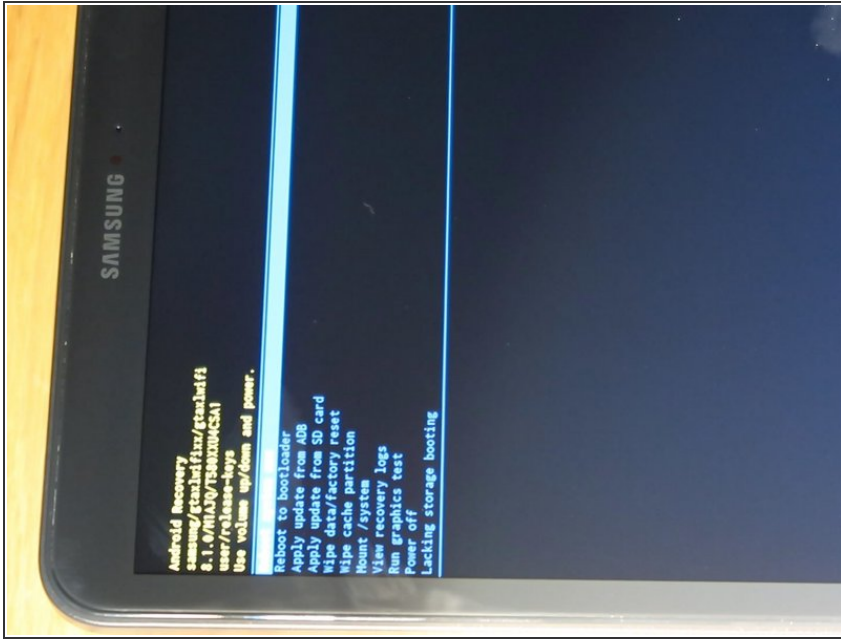
- You will then see a screen that says installing system updates followed by no command. Dont press anything during these screens just wait.

## Step 4



- Once you have the following screen use the volume down button to highlight "Wipe Data / Factory Reset"
- Press the power button to select it.
- Do the same process to select yes on the next screen
- You will then see confirmation at the bottom of the screen that the device has been wiped.

## Step 5



- Press the volume up button and select "Reboot System Now"
- The device will reboot and your done.

To reassemble your device, follow these instructions in reverse order.