



MacBook Pro 13" Retina Display Late 2012 SSD Assembly Replacement

Prereq only.

Written By: Walter Galan



INTRODUCTION

Prereq only.



TOOLS:

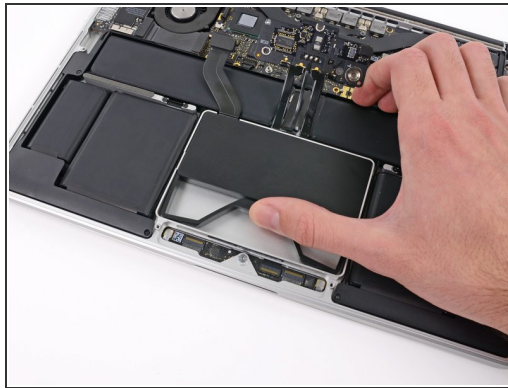
- [iFixit Opening Tools](#) (1)
 - [Spudger](#) (1)
 - [T5 Torx Screwdriver](#) (1)
-

Step 1 — SSD Assembly



- Use the flat end of a spudger to pry the SSD cable connector up from its socket on the logic board.

Step 2



- Use your thumb or finger to bend the plastic spring bar on the SSD tray, freeing the two clips at the front side of the device.
- While holding the spring bar depressed, tilt the SSD assembly up out of its cavity.

Step 3



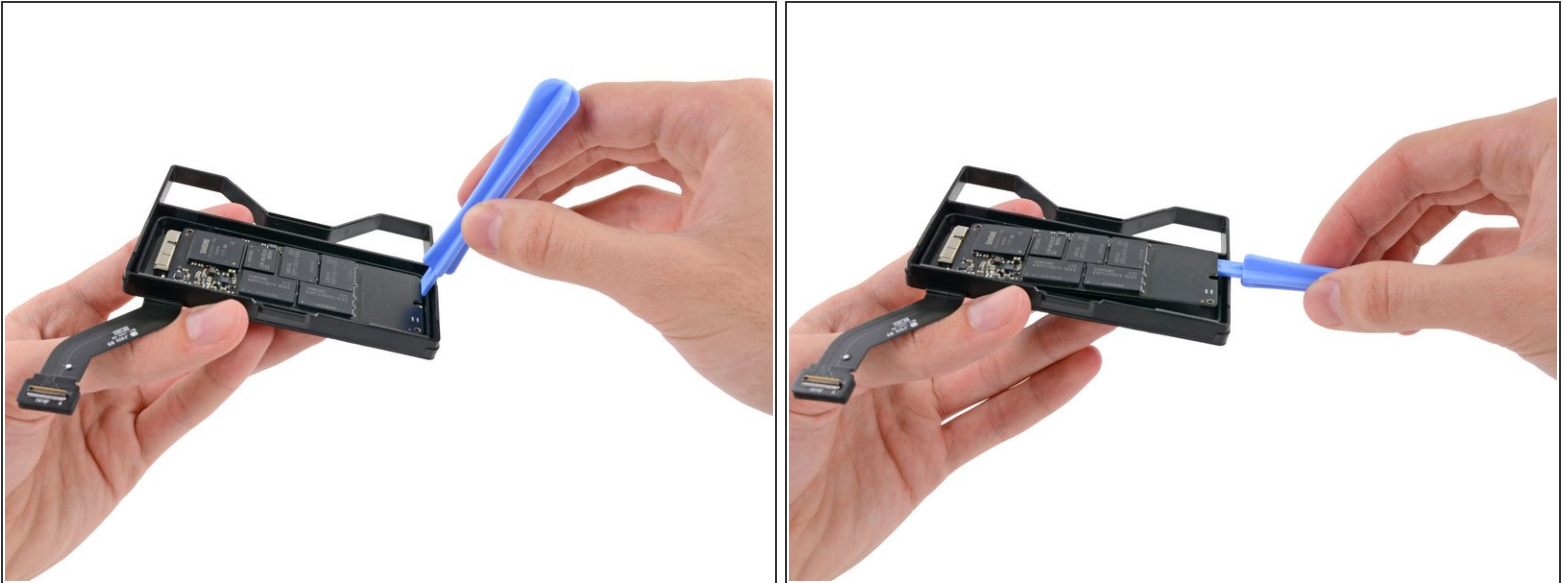
- Remove the SSD assembly from the upper case.

Step 4




- Remove the single 2.9 mm T5 Torx screw securing the SSD to the SSD tray.

Step 5



- Insert the edge of plastic opening tool between the SSD and the SSD tray, opposite to the socket side of SSD tray.
- Pry the side of the SSD opposite the SSD tray socket out of the SSD tray.

 Only lift the SSD up far enough to grab the sides of it with your fingers. Lifting it any more may damage the card or socket.

Step 6



- Carefully pull the SSD straight out of its socket on the SSD tray.

To reassemble your device, follow these instructions in reverse order.