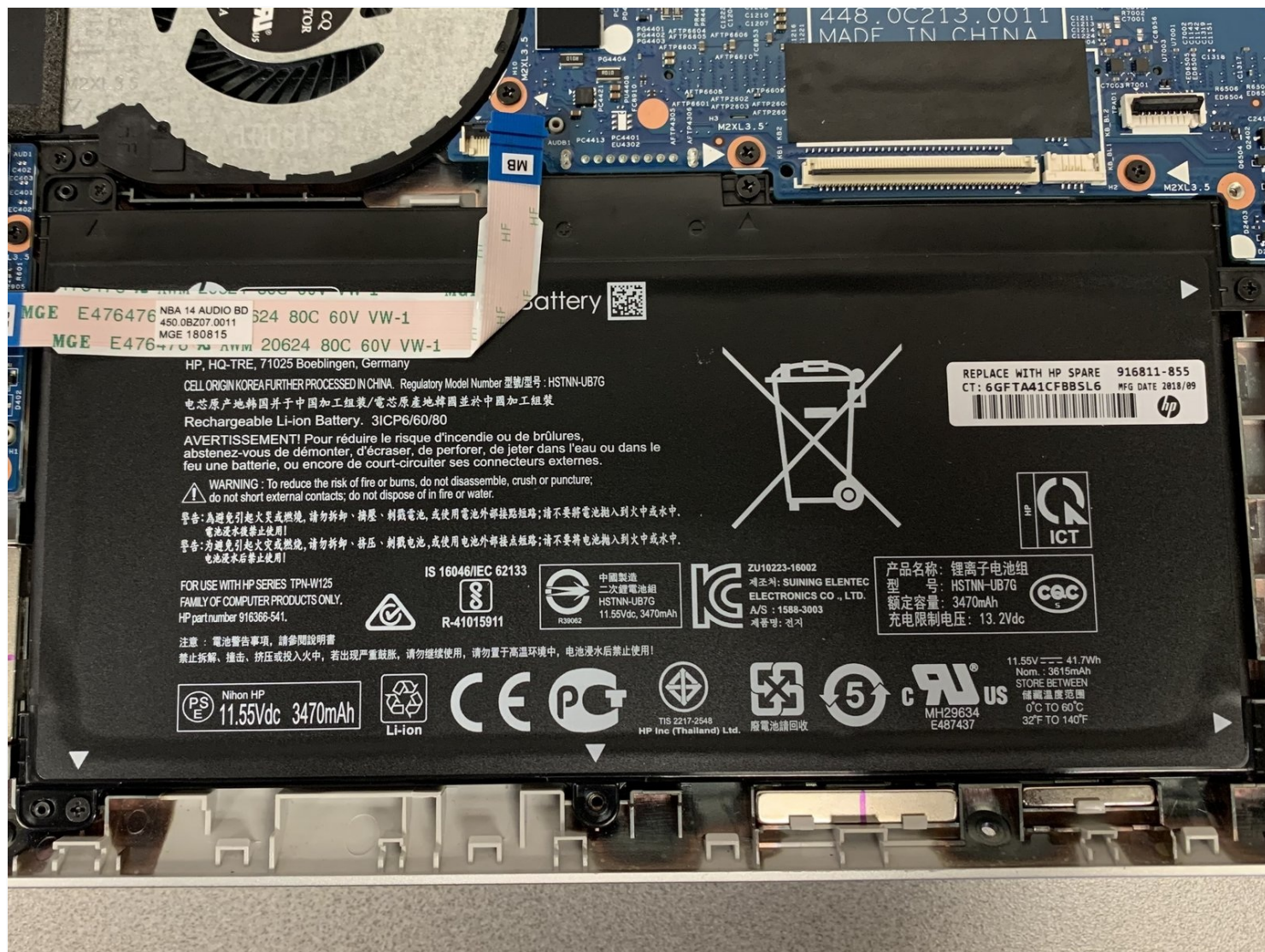




# HP Pavilion x360 14-ba253cl Battery Replacement

Use this guide to replace your battery in your...

Written By: ryan reichard



# INTRODUCTION

Use this guide to replace your battery in your HP Pavilion laptop.

**Note:** This guide is written for the HP Pavilion x360 14-ba253cl model.

Still under warranty? [Contact HP](#) to learn your warranty status, receive a repair under warranty if eligible, or for further warranty information.

This procedure requires removing the battery to disconnect it. Use care to avoid bending, twisting, or puncturing it—a charged lithium-ion battery can be very dangerous if accidentally punctured. [If your battery looks puffy or swollen, take extra precautions.](#)

**Don't continue to use a damaged battery, as doing so is a potential safety hazard. If in doubt, replace it with a new battery.**

---

## TOOLS:

[Spudger](#) (1)  
[Jimmy](#) (1)  
[iFixit Opening Picks \(Set of 6\)](#) (1)  
[Phillips #0 Screwdriver](#) (1)

## PARTS:

[HP Pavilion x360 14 Battery](#) (1)

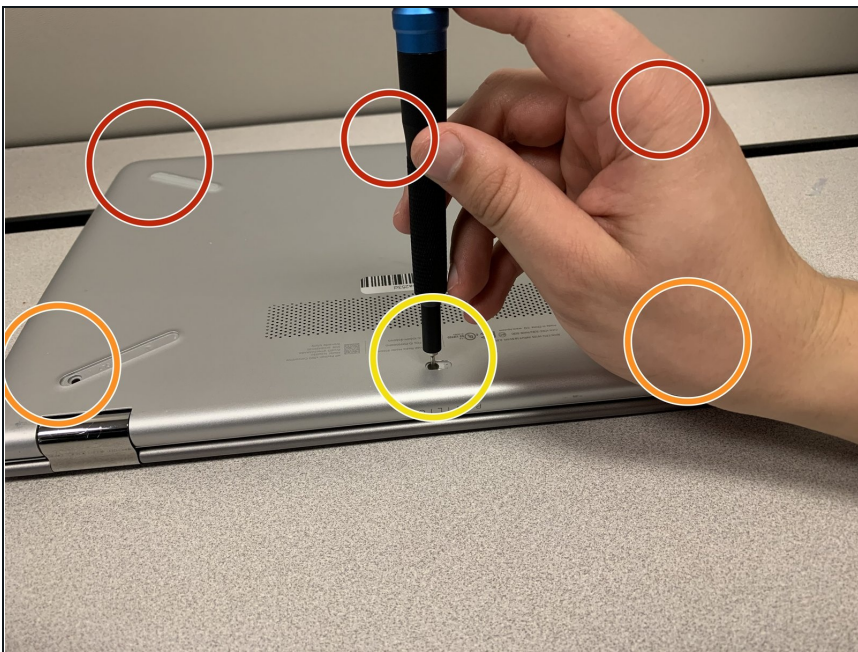
---

## Step 1 — Keyboard



- Use the Jimmy to remove the footpads located at the bottom of the laptop.

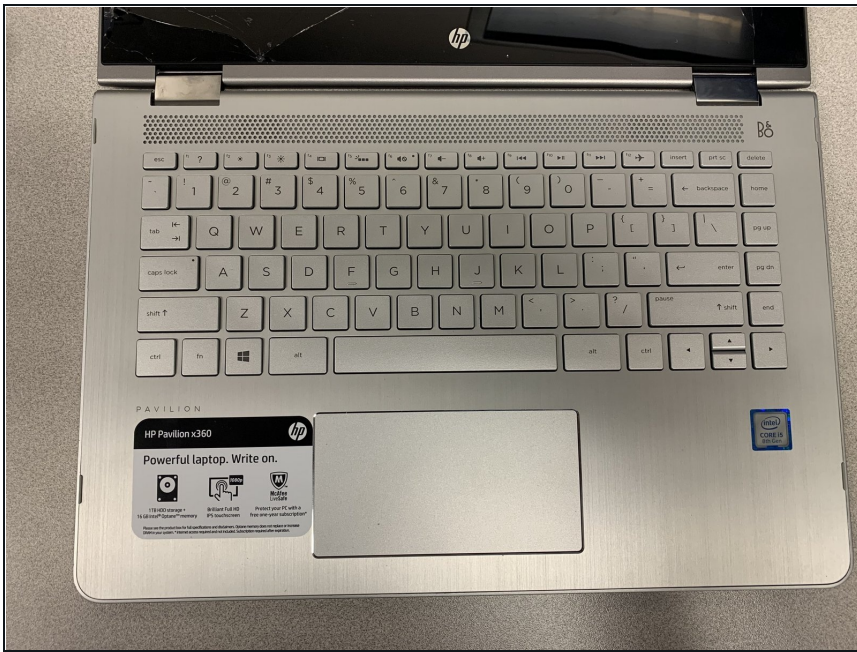
## Step 2



- Remove three 4.0mm Phillips #0 screws from the top of the cover.
- Remove two 6.0mm Phillips #0 screws underneath each of the back footpads.
- Remove one 4.0mm Phillips #0 screw beneath the divot.

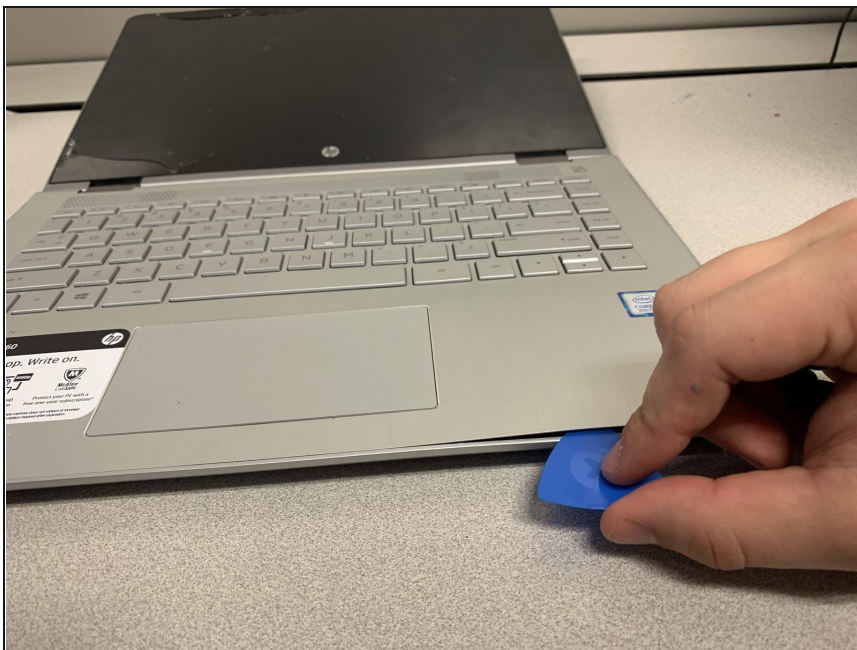


### Step 3



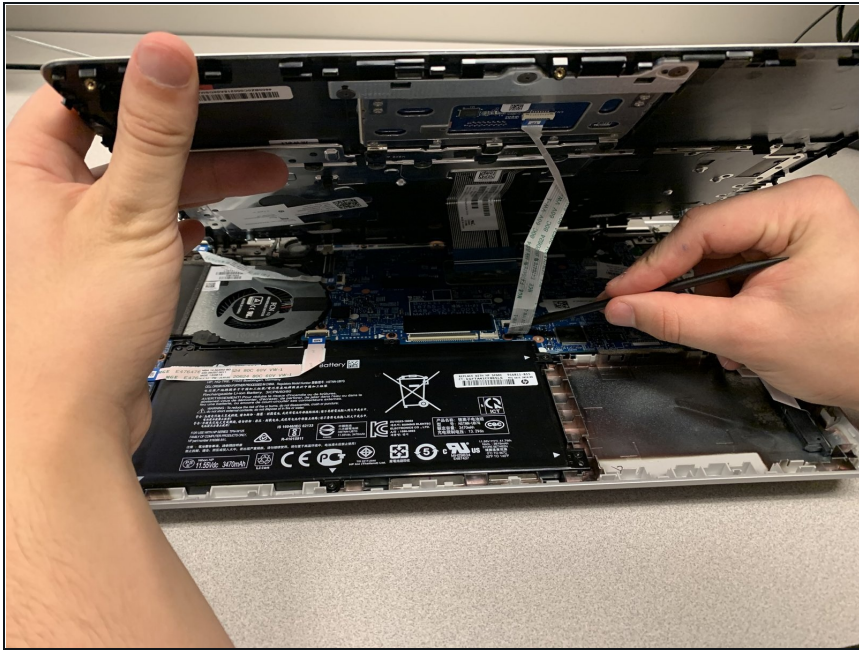
- Turn the computer onto its base, with the computer open and the keys facing upward.

### Step 4



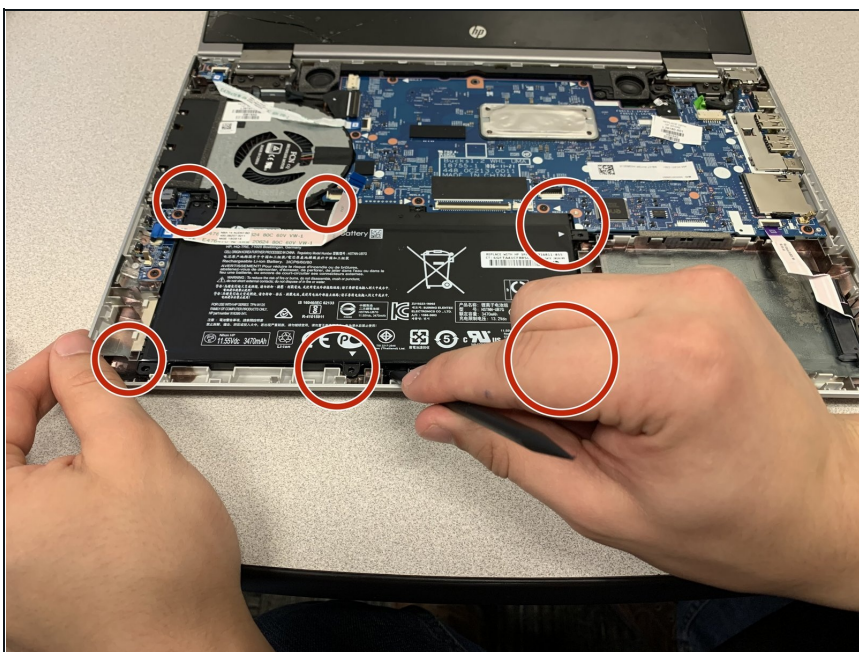
- Use an opening pick to separate the keyboard from the base of the laptop.

## Step 5



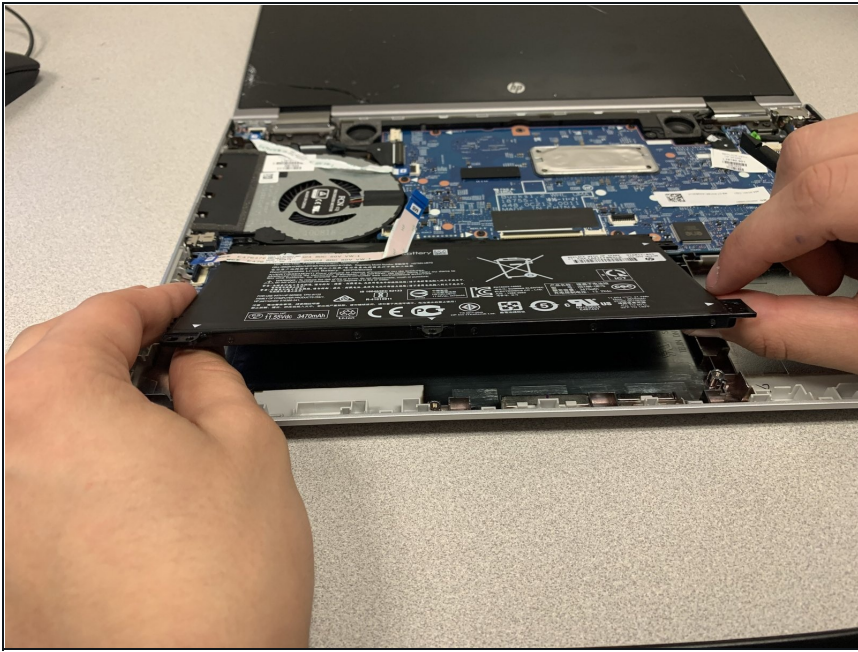
- Raise the keyboard slightly to gain access to the touch pad and keyboard cables.
- Using a spudger, lift up the plastic locks that connect the ribbon cable to the system board.
- Use the blue plastic tab on the ribbon cable to pull it out from the system board.
- Remove the keyboard from the laptop.

## Step 6 — Battery



- Remove six 3mm Phillips #00 screws around the perimeter of the battery.

## Step 7



- Carefully lift the battery starting from the lower right corner and disconnect it from the system board.

---

To reassemble your device, follow these instructions in reverse order.