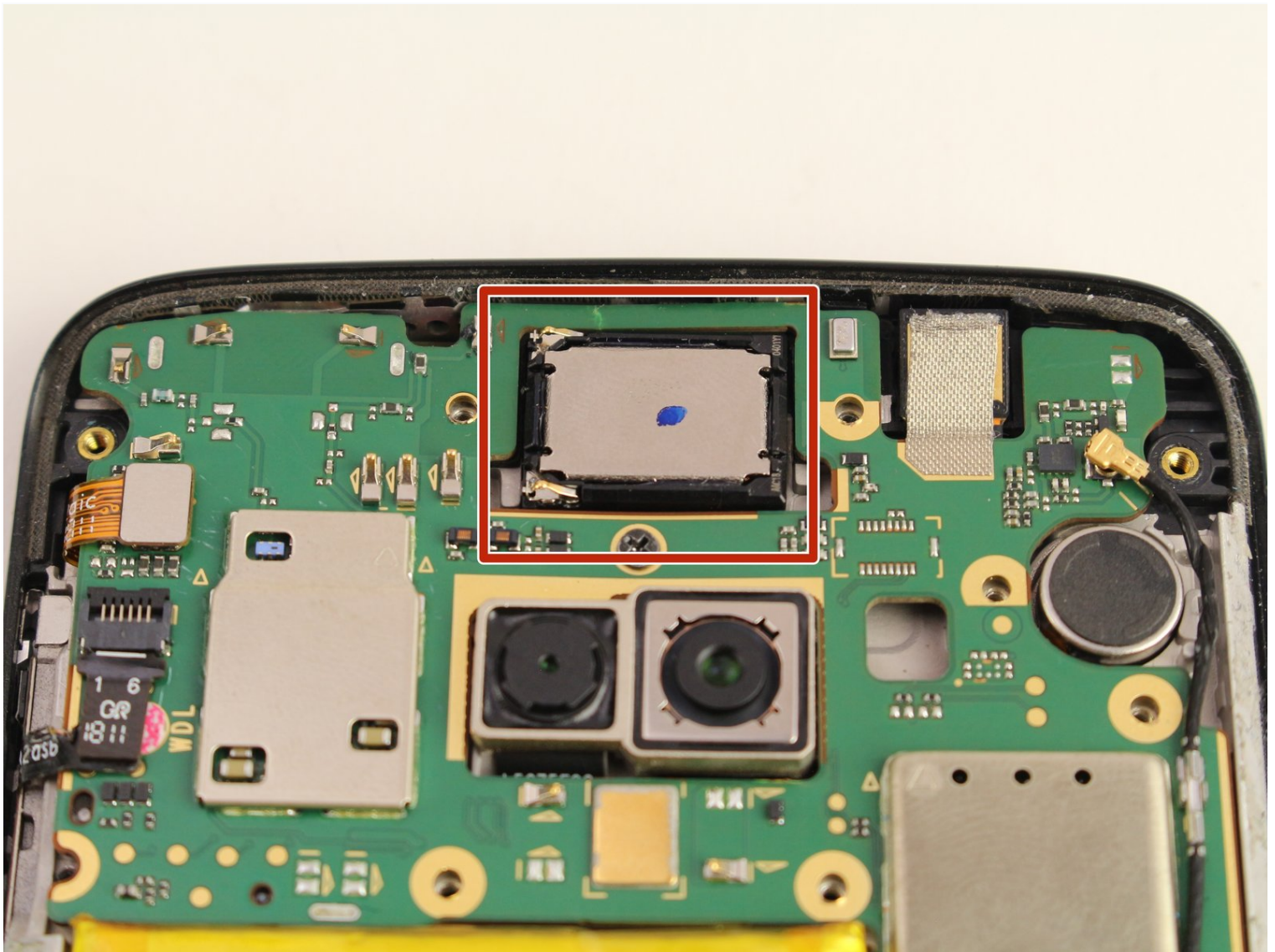




Motorola Moto G6 Speaker Replacement

The Motorola Moto G6 contains a speaker that...

Written By: Bradley Samuel



INTRODUCTION

The Motorola Moto G6 contains a speaker that can be replaced without taking off the motherboard. To access the speaker, the interior plate must be removed. If the speaker is too quiet or broken, a speaker replacement will most likely be the solution.

This guide teaches how to perform a speaker replacement. No repair experience is required this is a simple process with no hard to find tools that can be purchased on iFixit. The specific device model in this guide is XT1925-12. Other model numbers include: XT1925-4, XT1925-5, XT1925-6, and XT1925DL.

Before you begin, download the [Rescue and Smart Assistant](#) app to backup your device and diagnose whether your problem is software or hardware related.

Before beginning the repair, make sure the device is turned off and disconnected from an external power source. Gather the suggested tools listed below and begin the replacement.



TOOLS:

[Spudger](#) (1)
[Suction Handle](#) (1)
[Phillips #000 Screwdriver](#) (1)
[iFixit Opening Picks \(Set of 6\)](#) (1)
[iOpener](#) (1)
[Tweezers](#) (1)



PARTS:

[Tesa 61395 Tape](#) (1)

Step 1 — Remove the Rear Glass



⚠️ Power your phone off before you begin.

- If possible, drain the battery before disassembly. When the battery is charged, there's an increased risk of a dangerous thermal event if the battery is overheated or damaged during repairs.

i If the rear glass is cracked, completely [cover it with packing tape](#) to contain the glass shards and avoid injury.

- [Prepare an iOpener](#) and heat the back of the phone along its bottom edge for about two minutes, or until it's slightly too hot to touch. This will help soften the adhesive securing the rear glass.

i You may need to reheat and reapply the iOpener several times to get the phone warm enough. Follow the iOpener instructions to avoid overheating.

⚠️ A hair dryer, heat gun, or hot plate may also be used, but be careful not to overheat the phone—the display and internal battery are both susceptible to heat damage.

Step 2



- Apply a suction cup to the bottom edge of the rear glass.
- Pull up on the suction cup with firm, constant pressure to create a slight gap between the rear glass and the frame.
 - ① If the glass is cracked, the suction cup may not stick. [Try lifting it with strong tape](#), or superglue the suction cup in place and allow it to cure so you can proceed.
 - ① This may require a significant amount of force, but you only need to open a very slight gap with the suction cup to insert your tool.
- If you have trouble, apply more heat to further soften the adhesive, and try again. The adhesive cools quickly, so you may need to heat it repeatedly.
- Insert an opening pick into the gap you created under the rear glass.

Step 3



- Slide the pick all along the bottom edge of the phone to slice through the adhesive securing the rear glass.

⚠ Slow down and slice very carefully as you get to the corners. The curved part of the glass along the left and right edges can crack very easily if the pick pushes up against the curved glass.

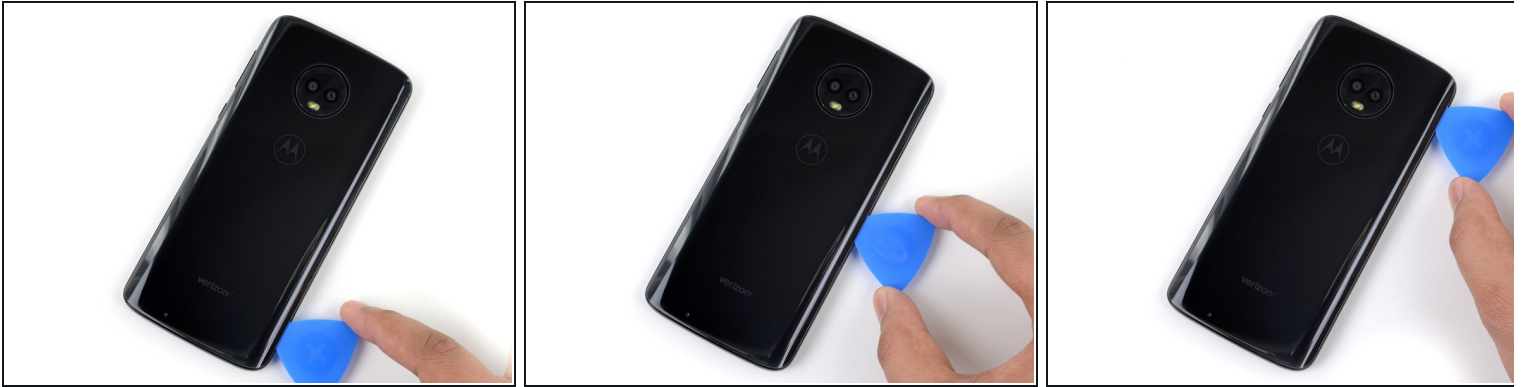
- i** After being cut, the adhesive will sometimes stick back together as it cools. To prevent this you can leave the pick in this edge after cutting, and continue the next steps with a new pick. Repeat this with each edge, leaving a pick and continuing with a new one.

Step 4



- Heat the right edge of the back of the phone to soften the adhesive underneath.

Step 5



- Slide the pick along the right edge of the rear glass to separate the adhesive underneath.

Step 6



- Heat the top edge of the back of the phone to soften the rear glass adhesive.

Step 7



- Slide the pick all along the top edge of the phone to slice through the adhesive securing the rear glass.

⚠ Slow down and slice very carefully as you get to the corners. The curved part of the glass along the left and right edges can crack very easily if the pick pushes up against the curved glass.

Step 8



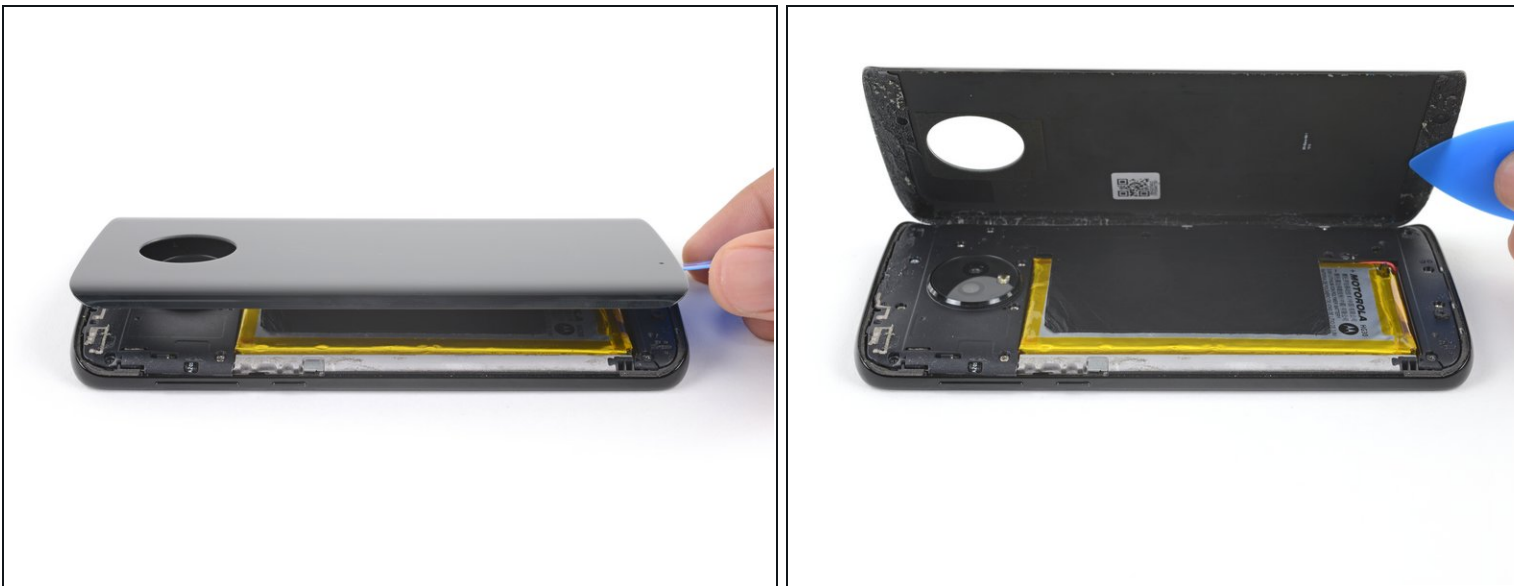
- Heat the left edge of the back of the phone to soften the adhesive underneath.

Step 9



- Slide a pick along the left edge of the phone to slice through the rear glass adhesive.

Step 10



- If the glass remains stuck, re-heat and slice the adhesive repeatedly as needed.
- Lift the rear glass carefully, making sure it's fully separated from any adhesive.
- Remove the rear glass.
- ☑ During reassembly, pause here to [replace the adhesive on the rear glass](#) using a precut adhesive card or high-strength double-sided adhesive tape, such as [Tesa 61395](#).
- ☑ After closing your device back up during reassembly, stack something heavy, like a textbook or two, on top of the device for 30-60 minutes. This ensures a strong adhesive bond.

Step 11 — Remove the Battery Tape



- Use a pair of tweezers to carefully peel up the black tape covering the battery.
- Remove the tape.
- ❗ If possible, keep the tape intact so it can be reused during reassembly.

Step 12 — Remove the Plastic Cover



- Use a Phillips driver to remove seventeen screws securing the plastic cover:
- Eleven grey 3 mm-long screws
- Five black 2.5 mm-long screws
- One silver 3.5 mm-long screw

Step 13



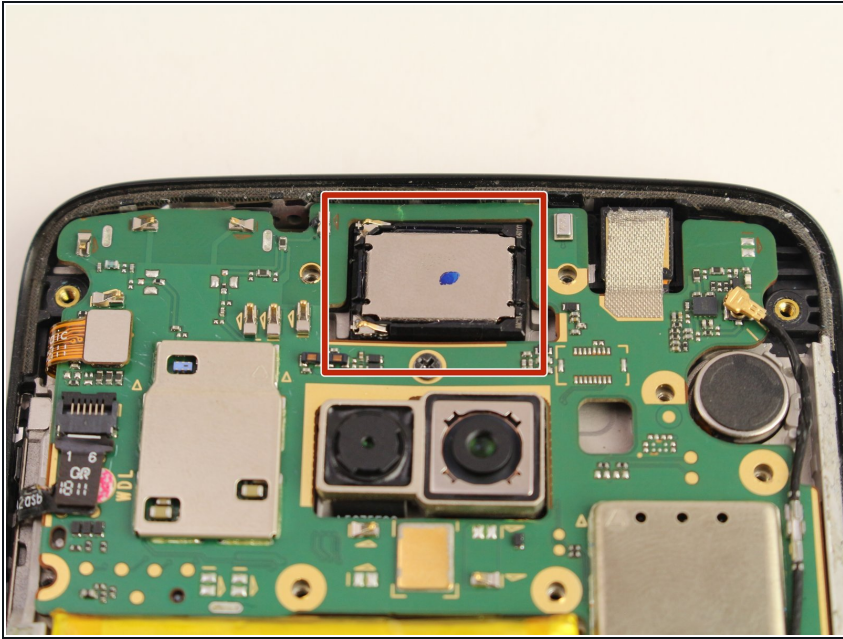
- Insert the pointed end of a spudger into the notch at the top left edge of the plastic cover.
- Pry up with the spudger to lift the upper edge of the cover and release the clips holding the cover down.
- Remove the plastic cover.

Step 14 — Disconnect the Battery



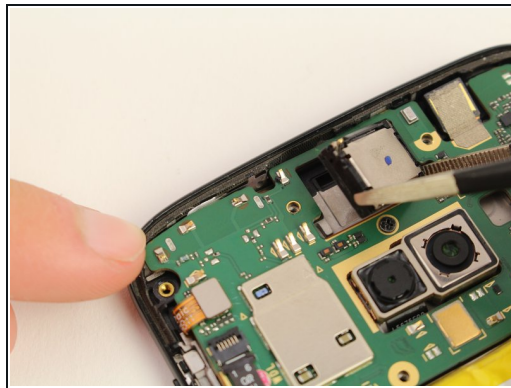
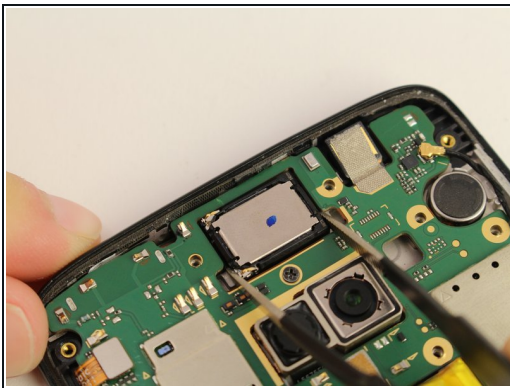
- Use the pointed end of a spudger to pry up the battery connector and disconnect it.
- ☑ During reassembly, this is a good point to power on your phone and test all functions before sealing it up. Be sure to power your phone back down completely before you continue working.

Step 15 — Speaker



- With the interior plate removed, locate the speaker.

Step 16



- Using tweezers gently lift the speaker out of the device.
- ❗ The speaker is not firmly mounted to anything and should come off easily.
- ☑ During reassembly, make sure to install the speaker with its spring contacts on the left side, so that they match up with the contacts on the underside of the upper plastic cover.

To reassemble your device, follow these instructions in reverse order.