



Nintendo Switch Pro Controller Trigger Button Replacement

This guide shows how to replace broken trigger...

Written By: Simon Lin



INTRODUCTION

This guide shows how to replace broken trigger buttons on a Nintendo Switch Pro Controller. Broken triggers limit an optimum gaming experience with the Nintendo Switch console. Replacing a broken trigger on your controller will aid you in using your controller to its full extent. This guide requires a nearly full disassembly of the controller. Therefore, exercise caution during disassembly to ensure that you do not damage the circuitry or the ribbon connectors on the inside of the controller.



TOOLS:

[Tweezers](#) (1)
[iFixit Opening Picks \(Set of 6\)](#) (1)
[Phillips #00 Screwdriver](#) (1)



PARTS:

[Nintendo Switch Pro Controller](#)
[Replacement Trigger](#) (1)

Step 1 — Remove the screws



- Flip the controller over so the model stickers face the ceiling.
- Use a [JIS](#) #00 screwdriver to remove the two black 8.4 mm screws that secure the handles, located at the ends of the handles.

Step 2 — Remove the handle covers



- Carefully remove the handle covers by pulling them away from the main body.

Step 3 — Remove the screws



- Use a JIS #00 screwdriver to remove the four silver 6.8 mm screws that secure the clear back plastic cover.

Step 4 — Unclip the plastic cover



- Carefully pry away the clear plastic cover using your fingernail.

Step 5 — Remove the clear plastic cover




- Remove the clear plastic cover.

Step 6 — Remove the battery



- Remove the lithium-ion battery by using a fingernail or plastic opening tool to pry it up on the left side.

 Only a small amount of force is needed.

Step 7 — Remove the screws



- Use a Phillips #1 screwdriver to remove the five 5 mm screws from the back of the controller.
 - The two case screws above the handgrips and the single case screw below the battery bay have a shallow seat. These three screws can be easily removed.
 - The two case screws adjacent to the **ZR** and **ZL** shoulder buttons have a deep seat. Use an extension or a Phillips screwdriver with a longer shaft to reach these screws.

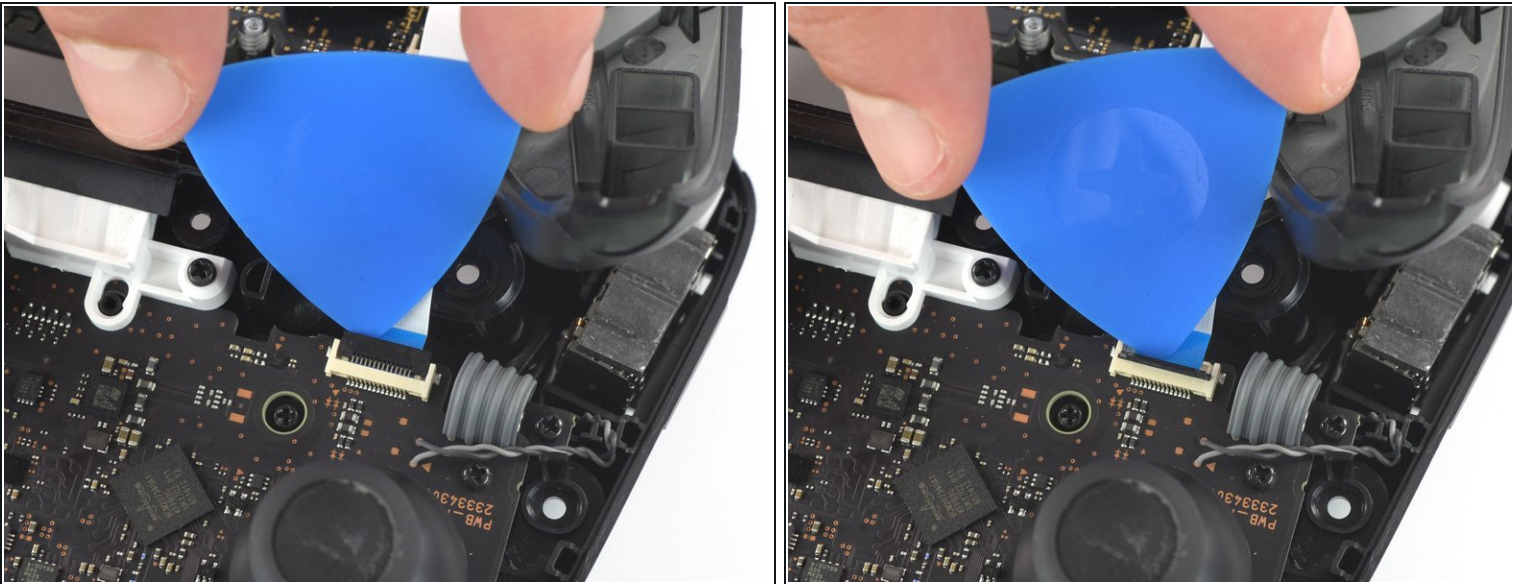
Step 8



- Delicately take off the plastic cover from the controller.

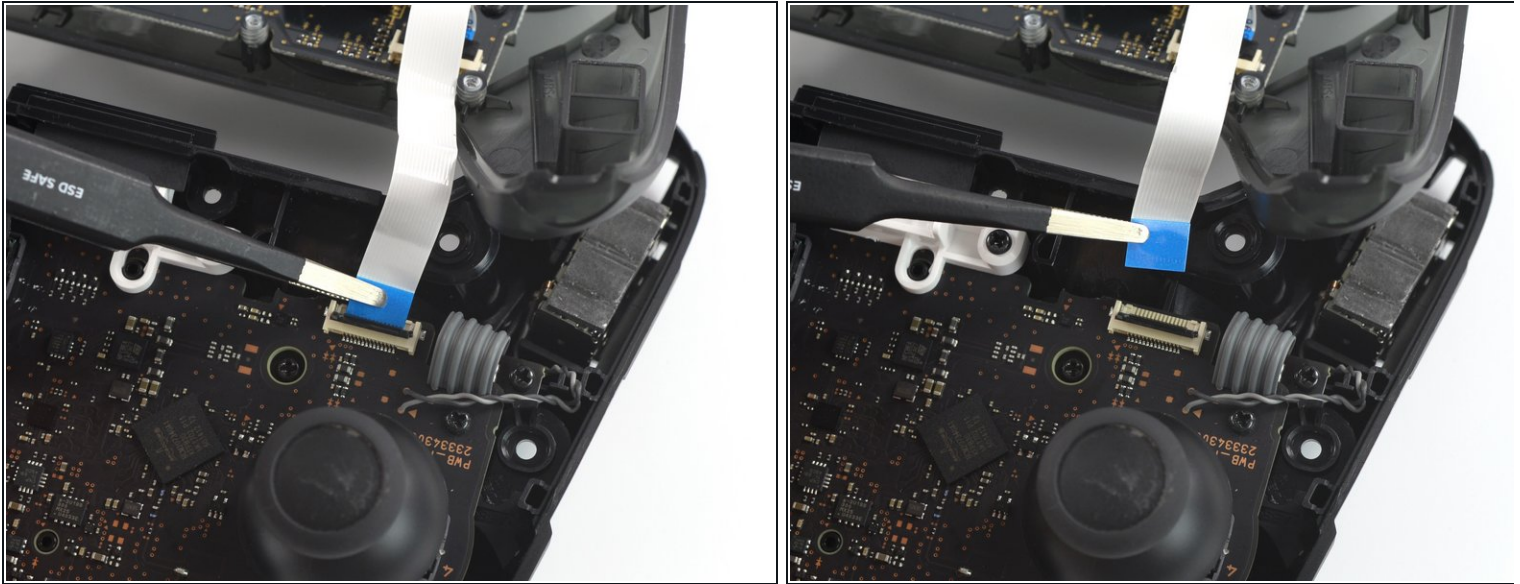
⚠ Do not completely remove the front cover just yet, as it is still attached to the motherboard via a white ribbon cable.

Step 9 — Open the flap



- Use the tip of an opening pick to open the black flap of the ZIF connector by pushing it upwards.

Step 10 — Disconnect the interconnect cable



- Use your fingers or a pair of blunt nose tweezers to disconnect the interconnect cable from its connector.

Step 11 — Remove the front case



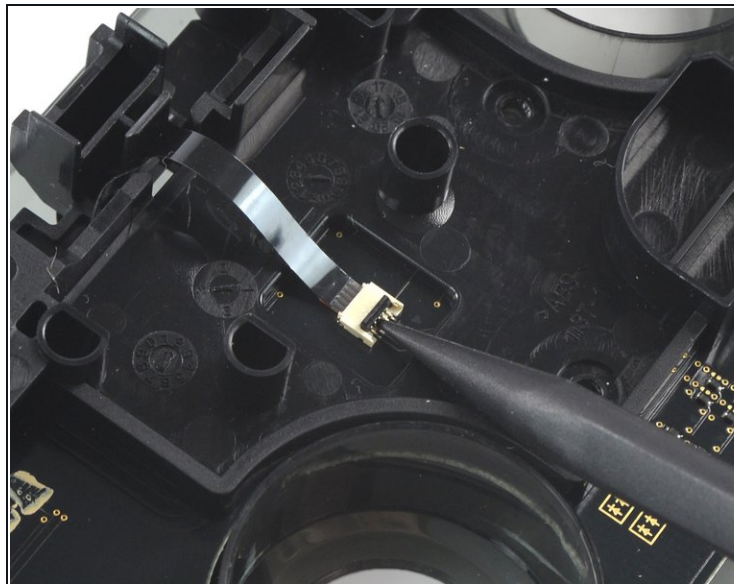
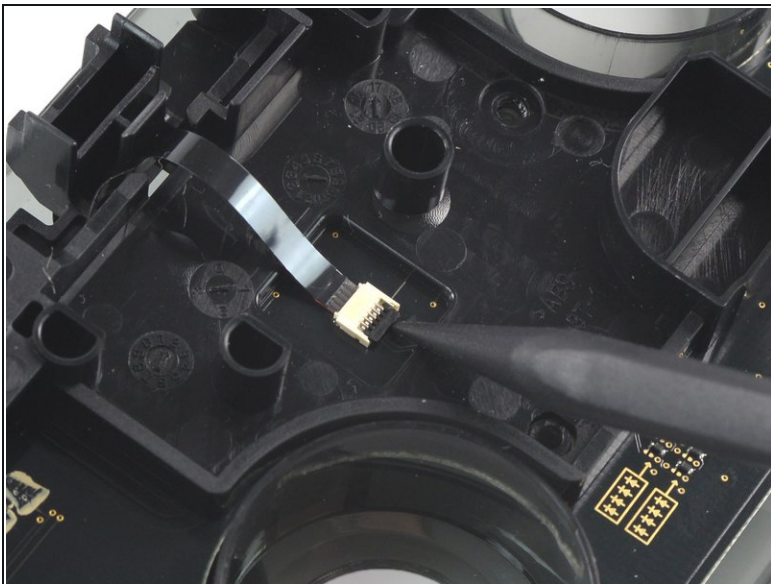
- Remove the front case.

Step 12 — Remove the screws



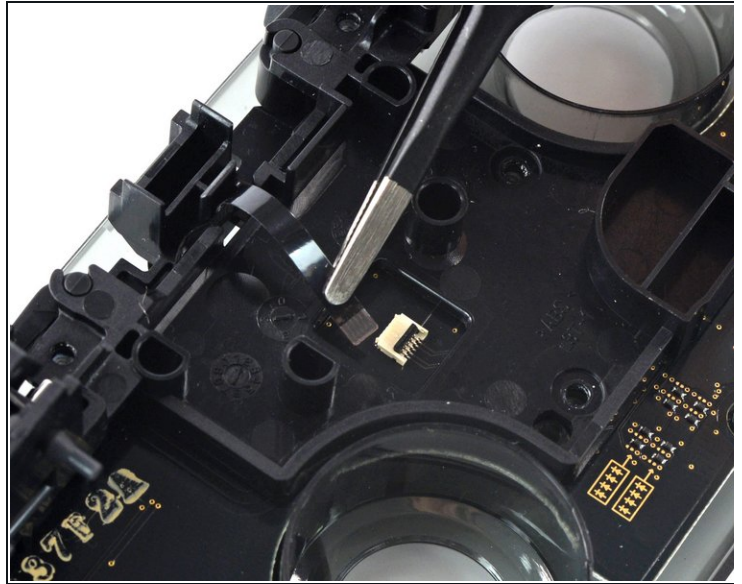
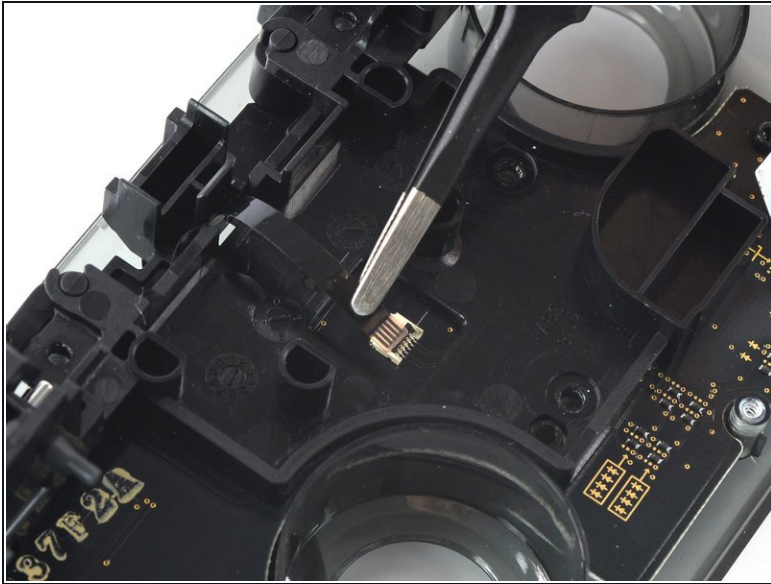
- Remove the two 6.8 mm-long screws on the top circuit board using a Phillips screwdriver.

Step 13 — Open the ZIF connector



- Use a spudger to flip up the locking tab on the ZIF connector.

Step 14



- Remove the black ribbon cable from its connector.
- ⓘ Only a small amount of force should be needed to remove the ribbon cable.

Step 15



- Remove the trigger buttons from the plastic cover.

To reassemble your device, follow these instructions in reverse order.