



# Lenovo ThinkPad T460s Wi-Fi Card Replacement

If your Lenovo Thinkpad T460s(all modes) is not...

Written By: keweï xia



# INTRODUCTION

If your Lenovo Thinkpad T460s([all modes](#)) is not stably connecting to the internet i.e. weak signals, or even unable to use the internet, use this guide to replace the WIFI module.

The WIFI module connects the laptop to the internet. A faulty WIFI module leads to weak signals or no signals at all.

Before using this guide, check your network status, make sure the connection problem does not come from your router.

Before you begin, please carefully check your laptop completely power off and has no connection with external power source.

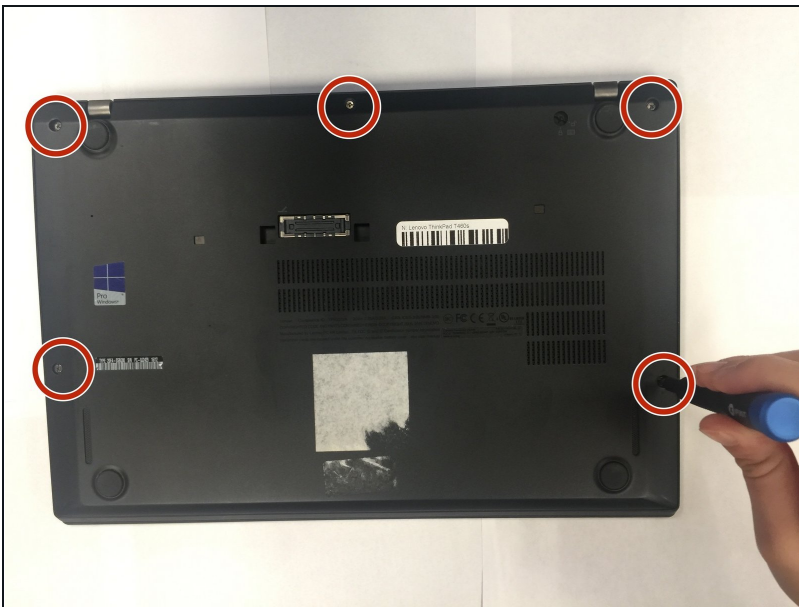
## TOOLS:





[Phillips #1 Screwdriver](#) (1)  
[ESD Safe Blunt Nose Tweezers](#) (1)

## PARTS:

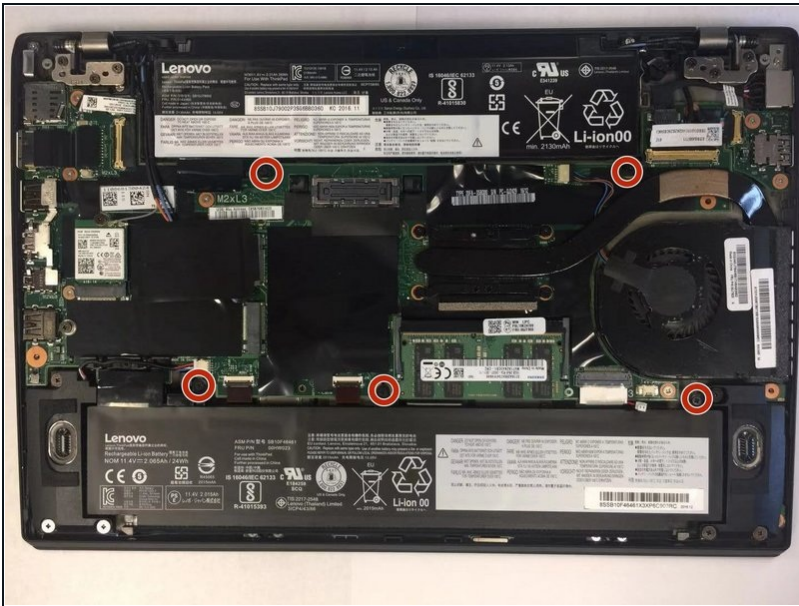
[01AX748 - Lenovo Laptop Wireless Module - Genuine](#) (1)

## Step 1 — Battery



-  Before you begin, be sure to turn off your laptop and discharge the battery down to 25%.
-  Remove the five 5.5mm Phillips #1 screws securing the back cover.
-  These screws are captive and cannot be removed completely from the back cover.
-  Lift and remove the back cover.

## Step 2



- Remove the five 5.5mm Phillips #1 screws securing the two batteries.

## Step 3



- Unplug the two-wire connector from the motherboard by gently pulling it towards the battery.  
⚠ Pull parallel to the battery, not straight up.



## Step 4



- Each battery has a black tab covering the electrical contacts.
- Lift the battery by its tab and remove it from the device.

## Step 5 — Wi-Fi Card



- Disconnect the gray and black cables from the Wi-Fi card.
- Remove the 3mm Phillips #1 screw on the chip.
- Remove the Wi-Fi card from the device.

To reassemble your device, follow these instructions in reverse order.