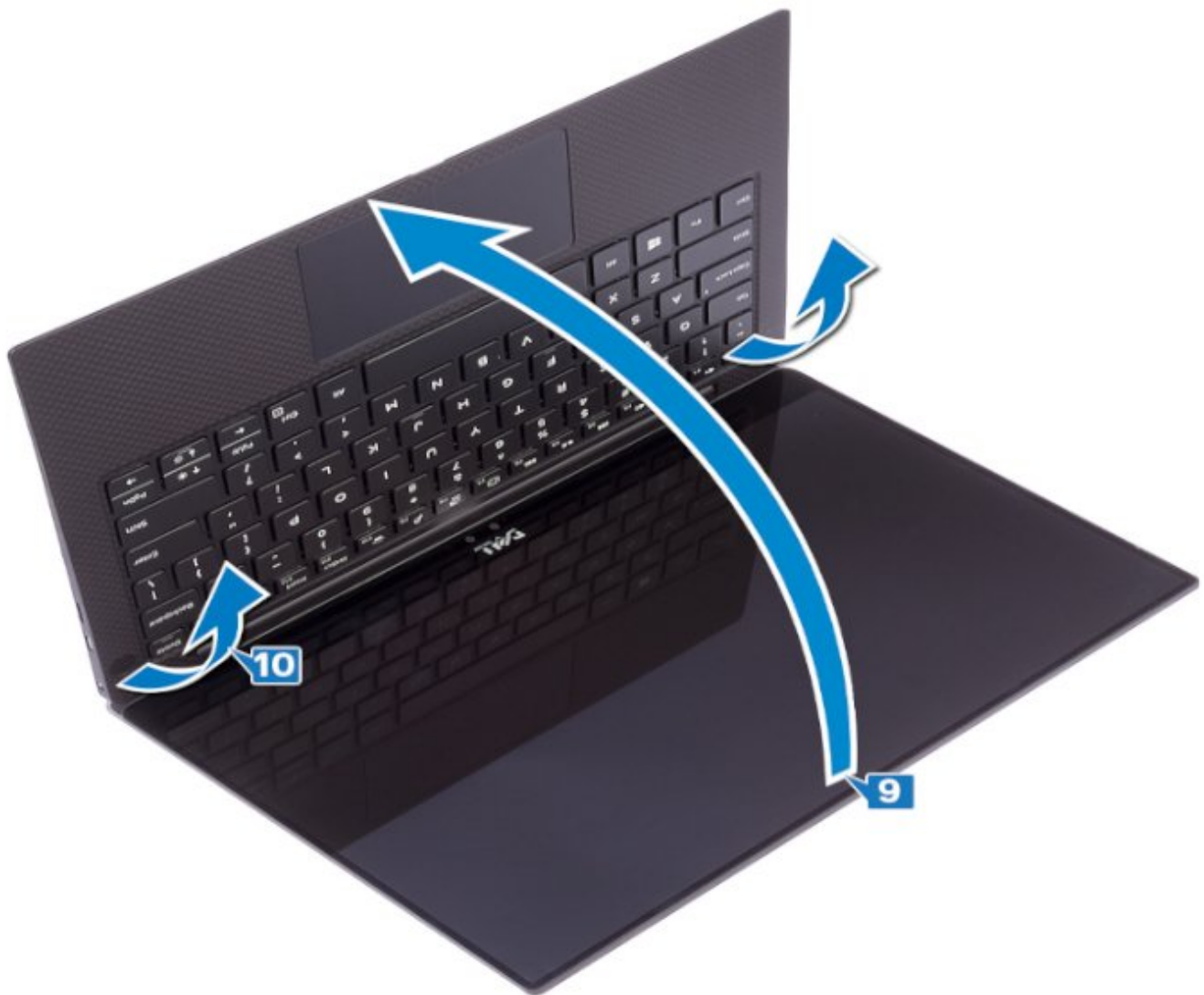




Replacement of the display on a Dell XPS 13 9380

This guide explains how to remove the screen from your Dell XPS 13 9380.

Written By: Schwarzer



INTRODUCTION

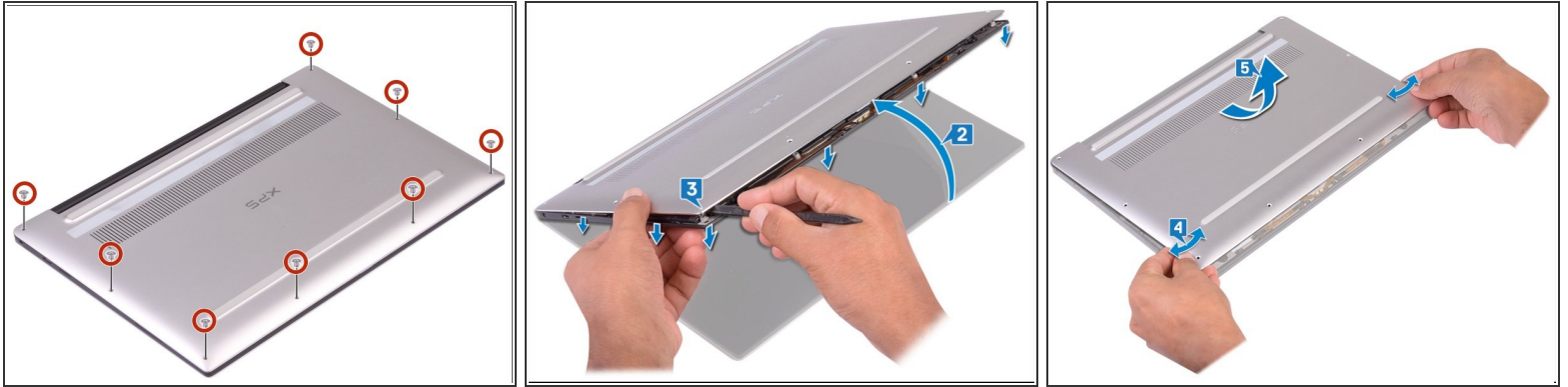
You must disconnect or replace the screen of your Dell XPS 13 9380, this guide is then made for you!



TOOLS:

- [Mako Driver Kit - 64 Precision Bits](#) (1)
-

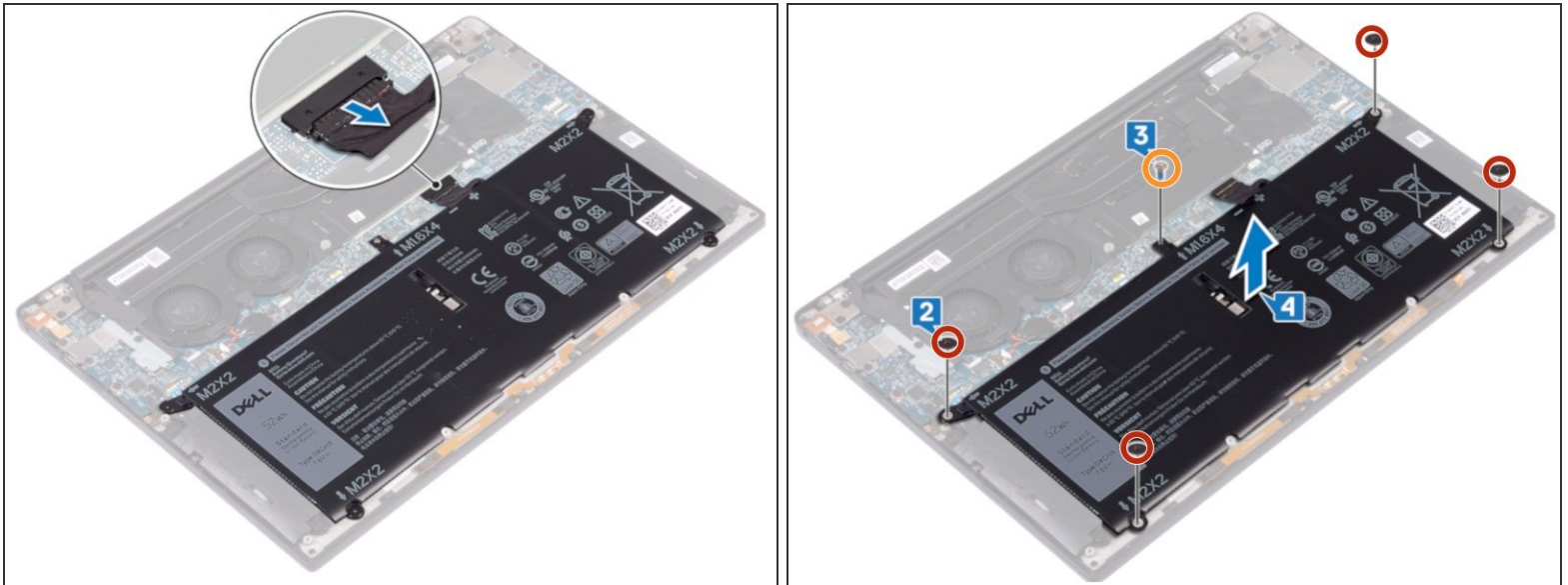
Step 1 — Remove the back panel



i Before you begin, be sure to turn off your laptop and unplug it from the outlet.

- Use a Torx T5 driver to unscrew the eight screws securing the back panel.
- Use a spudger to pry up and loosen the back panel.
- Lift the back panel up slightly from the non-hinged edge.
- Pull the back panel away from the hinged edge, wiggling it back and forth to loosen the clips.
- When the back panel clips are free, remove the back panel.

Step 2 — Remove the battery

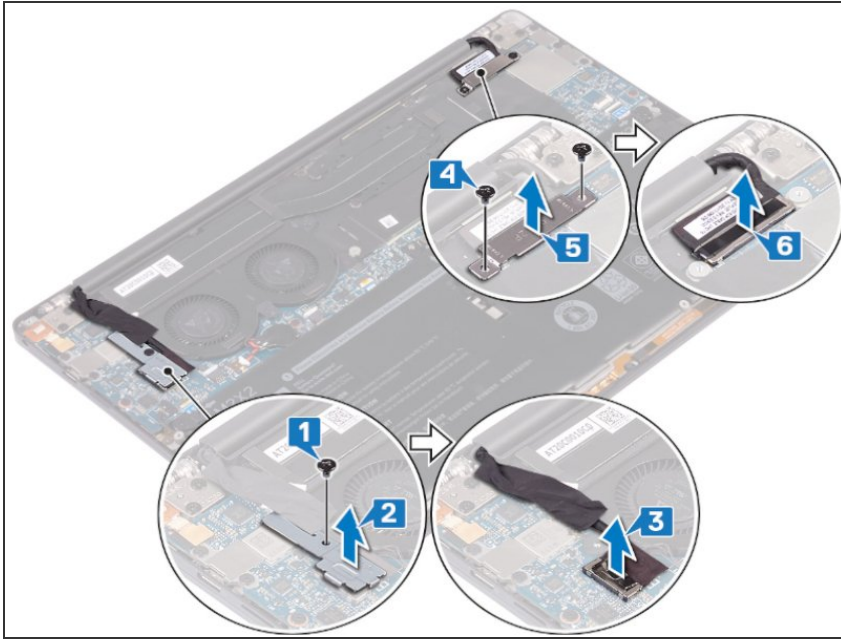


- Disconnect the cable from the battery by pulling the connector towards the battery.

⚠ Pull parallel to the battery, not straight up.

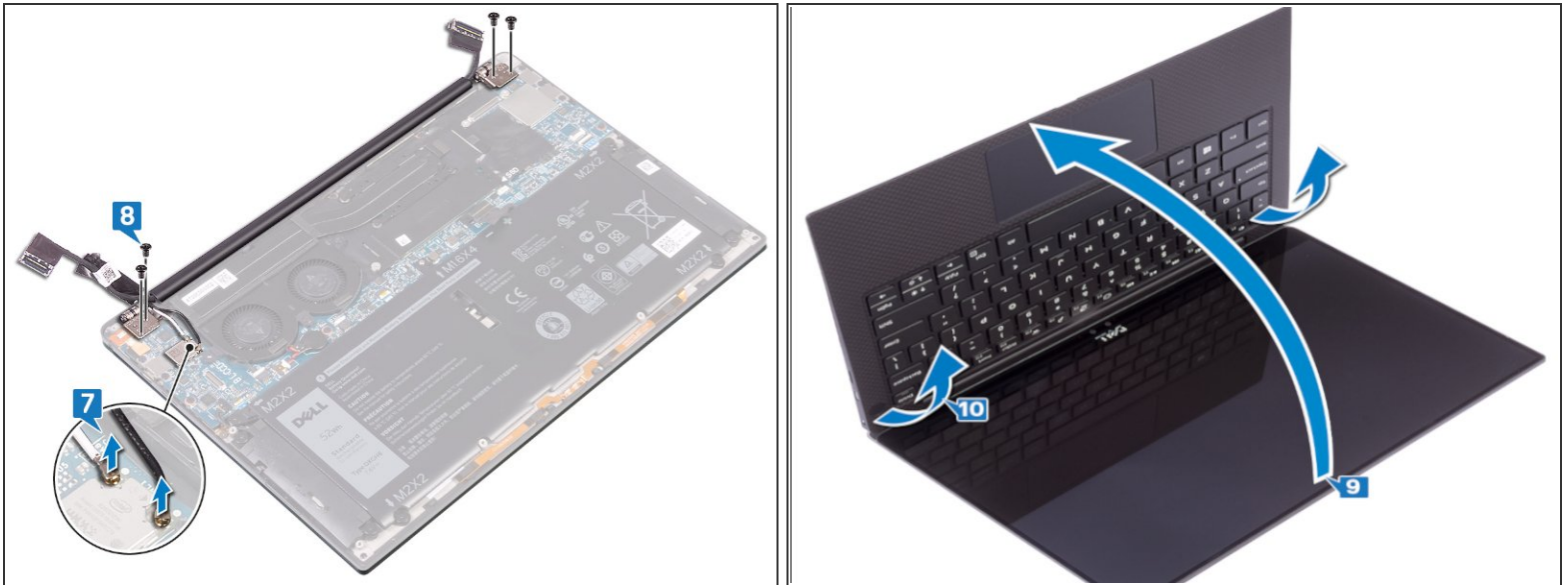
- Remove the four screws (M2 x 2) securing the battery.
- Remove the screw (M1.6 x 4) securing the battery.
- Remove the battery from its recess.

Step 3 — Display



- **1-** Remove the screw (M1.6 x 3) that attaches the WiFi card and cable holder from the webcam to the motherboard. **2-** Remove the WiFi card and cable holder.
- **3-** Disconnect and lift the webcam cable from the motherboard, removing the adhesive tape that attaches the webcam cable to the fans.
- **4-** Remove the two screws (M1.6 x 2.5) that attach the display cable holder to the motherboard. **5-** Then remove everything.
- **6-** Disconnect the screen connection from the motherboard.

Step 4



- **7-** Disconnect the antenna cables from the motherboard.
- **8-** Remove the four screws (M2.5 x 4) that fix the hinges of the screen.
 - **9-** Place the back of the computer screen on a clean and level surface, then open the computer at a 90-degree angle.
 - **10-** Gently slide and lift the screen off the rest of the computer.

To reassemble your device, follow the instructions in reverse order.