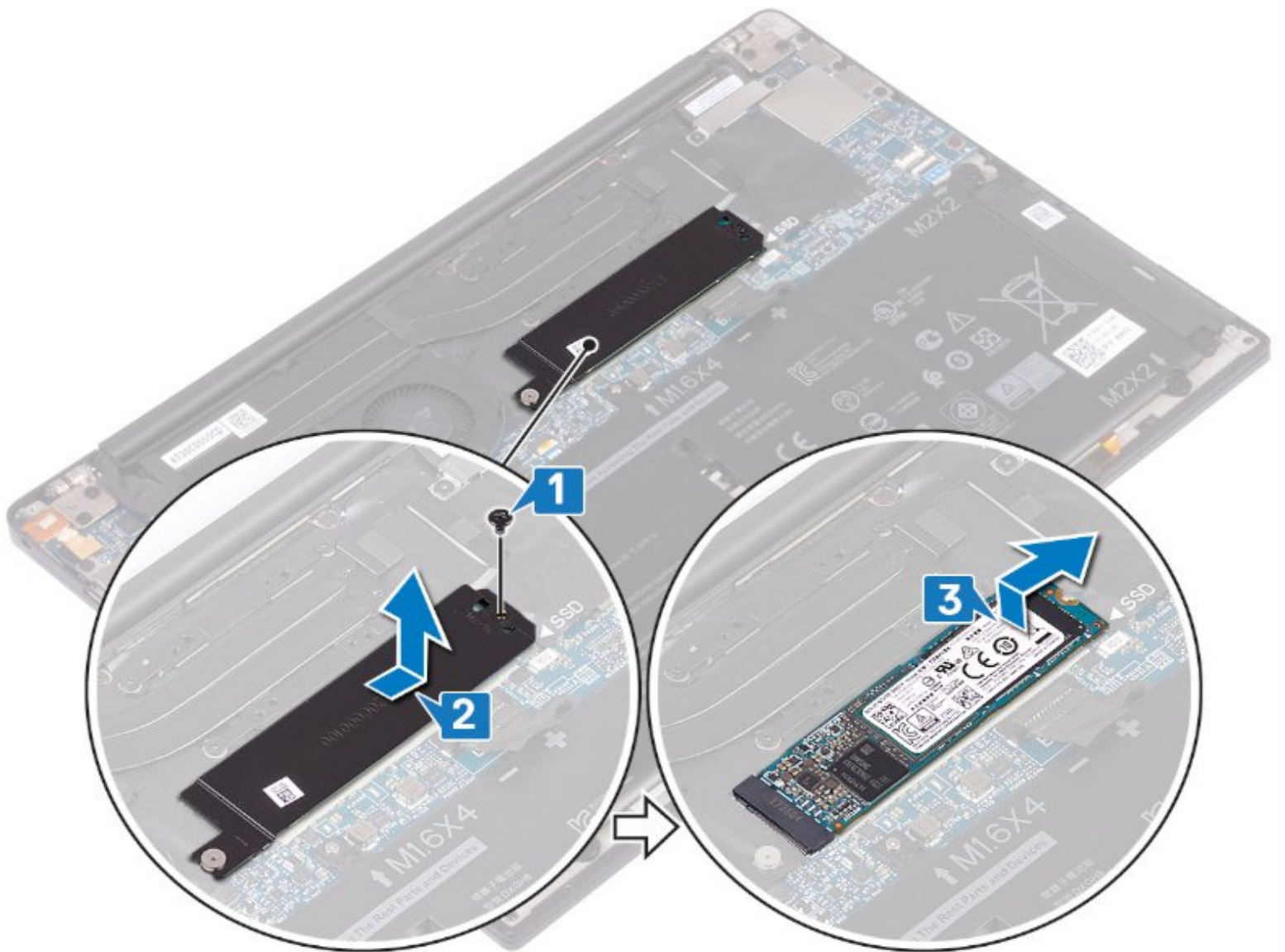




# SSD replacement on a Dell XPS 13 9380

This guide explains how to replace the SSD on your Dell XPS 13 9380.

Written By: Schwarzer



---

## INTRODUCTION

You need to disconnect or replace the SSD from your Dell XPS 13 9380, this guide is for you!

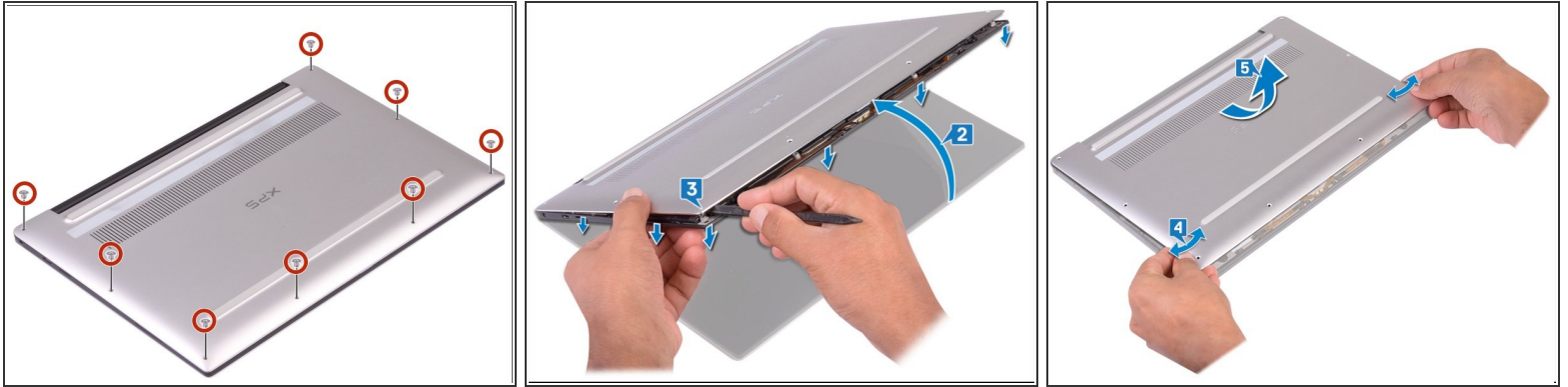
---




### TOOLS:

- [Mako Driver Kit - 64 Precision Bits](#) (1)
-

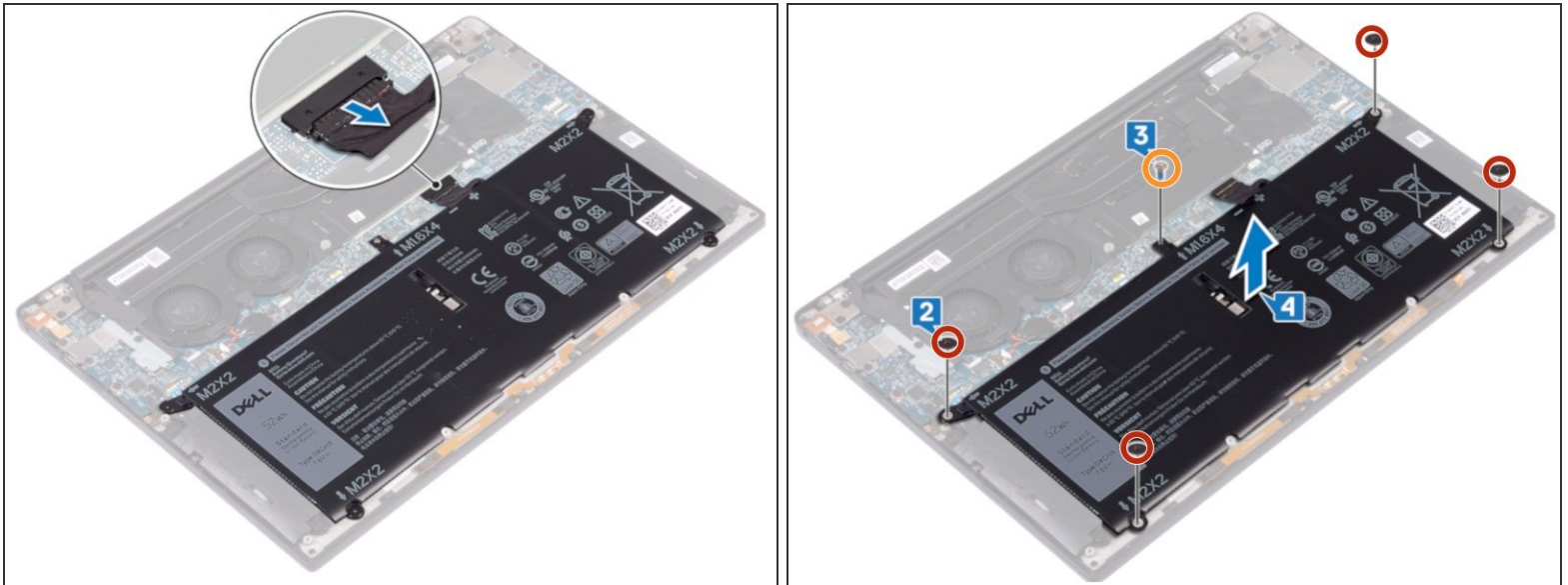
## Step 1 — Remove the back panel



 Before you begin, be sure to turn off your laptop and unplug it from the outlet.

- Use a Torx T5 driver to unscrew the eight screws securing the back panel.
- Use a spudger to pry up and loosen the back panel.
- Lift the back panel up slightly from the non-hinged edge.
- Pull the back panel away from the hinged edge, wiggling it back and forth to loosen the clips.
- When the back panel clips are free, remove the back panel.

## Step 2 — Remove the battery

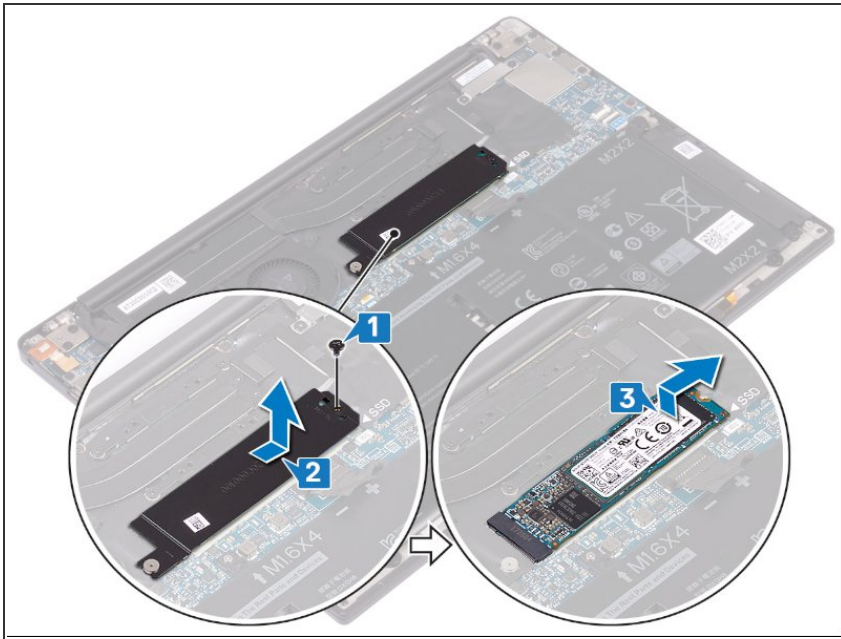


- Disconnect the cable from the battery by pulling the connector towards the battery.

⚠ Pull parallel to the battery, not straight up.

- Remove the four screws (M2 x 2) securing the battery.
- Remove the screw (M1.6 x 4) securing the battery.
- Remove the battery from its recess.

## Step 3 — Remove the SSD



- ★ We removed or disconnected the battery to avoid any electrical discharge.
- 1- Remove the screw (M2x3) that attaches the SSD and its protective frame to the motherboard.
  - 2- Slide the protective frame of the SSD disk slot protection frame and remove it from the SSD disk.
  - 3- Lift the SSD at an angle, then slide it and remove it from its housing.

To reassemble your device, follow the instructions in reverse order.