



Huawei Mate 10 Back Cover Replacement

Replace a broken back cover, or remove it to access the internals for the Huawei Mate 10.

Written By: Arthur Shi



INTRODUCTION

This guide shows how to remove and replace the glass back cover for the Mate 10.

The back cover held in place with a very strong perimeter adhesive. **During removal, the adhesive may rip out parts of the coating from the glass back cover, leaving behind patches of clear glass.**



TOOLS:

- [iOpener](#) (1)
- [Suction Handle](#) (1)
- [iFixit Opening Picks \(Set of 6\)](#) (1)
- [Tweezers](#) (1)
- [iFixit Opening Tool](#) (1)



PARTS:

- [Huawei Mate 10 Back Cover Adhesive](#) (1)

Step 1 — Remove the back cover



- [Heat an iOpener](#) and apply it to the bottom edge of the phone for two minutes. Re-heat the iOpener as needed.
- ⓘ A hair dryer, heat gun, or hot plate may also be used, but be careful not to overheat the phone.
- While you wait, note the location of the adhesive holding the back cover in place.

Step 2



- Place a suction cup near the bottom edge of the back cover, on the right side (opposite the speaker grille) of the USB-C charging port, above the microphone hole.
 - ⓘ If your back cover is badly cracked, covering it with a layer of clear packing tape may allow the suction cup to adhere. If all else fails, you can superglue the suction cup to the back cover.
- Pull on the suction cup with strong, steady force to create a gap.
 - ⓘ Due to the adhesive's strength, this is very difficult and may take multiple attempts. If you can't create a gap, re-apply heat and try again.
- Insert the point of an opening pick into the gap.

Step 3



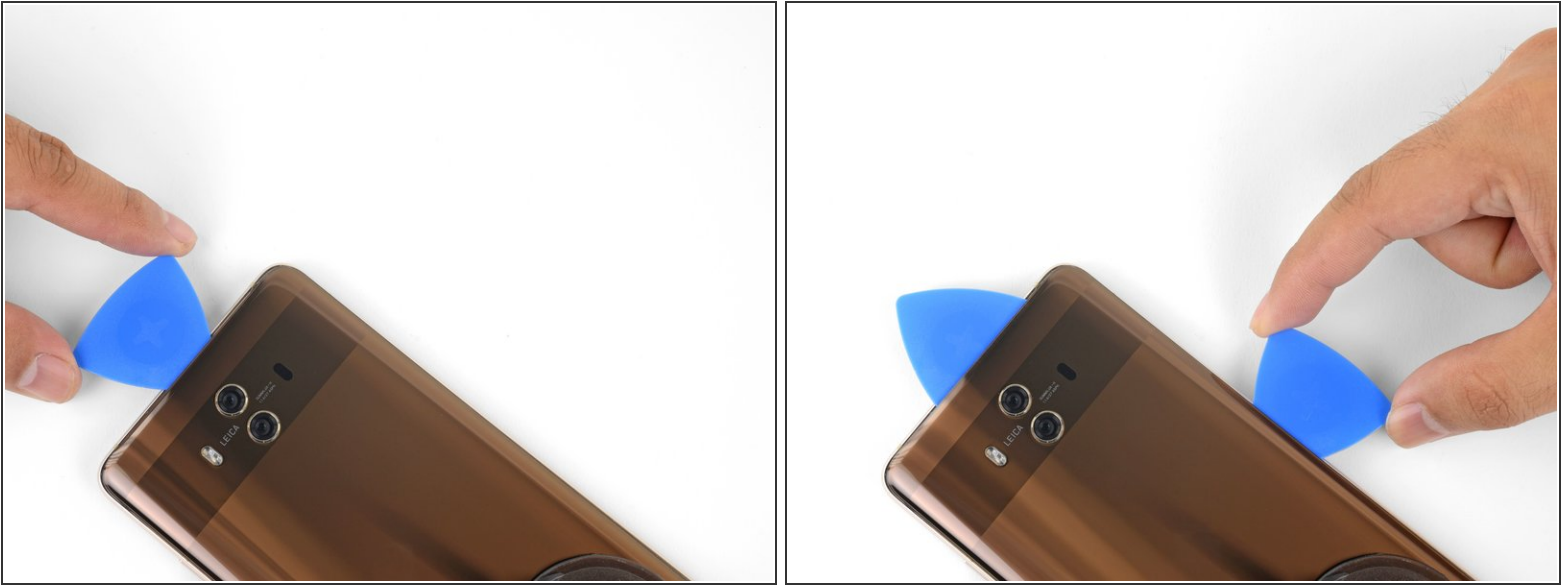
- Slide the pick along the bottom edge and around the bottom-left corner, slicing through the adhesive.
- If the adhesive feels tacky and difficult to slice, re-apply heat to the edge and try again.
- Leave an opening pick in the seam to prevent the edge from re-sealing.

Step 4



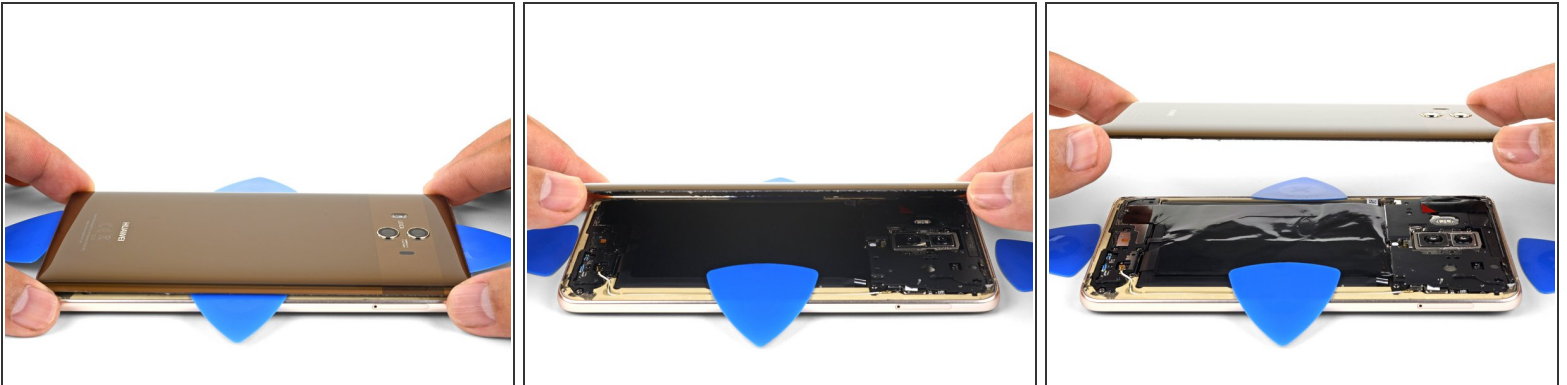
- Apply a heated iOpener to the left edge of the phone.
- Use an opening pick to slice through the adhesive on the left edge of the phone.
- ⓘ The adhesive is very thick in some areas. Sustained exposure to heat will help weaken the stubborn adhesive. Take your time, and apply heat liberally.

Step 5



- Continue heating and slicing through the remaining edges, leaving opening picks in the seams to prevent the adhesive from re-sealing.

Step 6



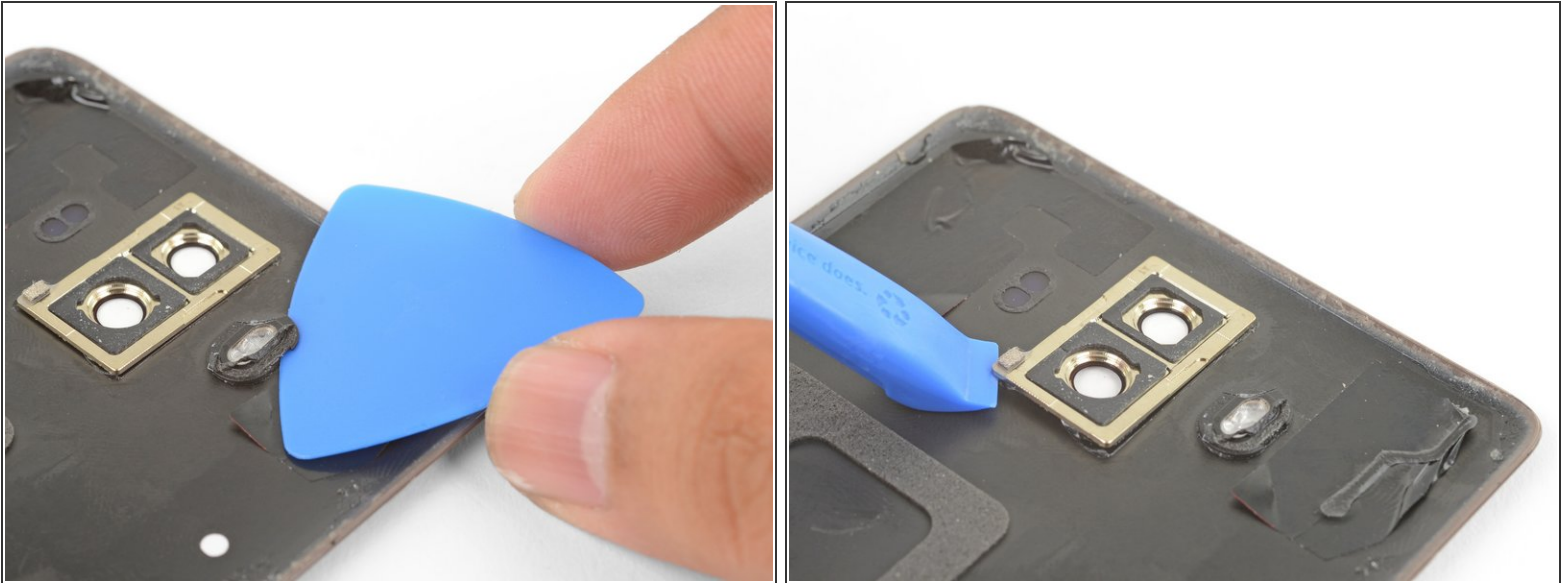
- After you cut through the adhesive around the entire perimeter of the back cover, begin to lift it away from the phone.
 - Use an opening pick to slice any remaining adhesive.
 - Remove the back cover.
- ☒ During reassembly, this is a good point to power on your phone and test all functions before sealing it up. Be sure to power your phone back down completely before you continue working.

Step 7 — Prep the phone for a new back cover



- ✦ Before you install a replacement back cover, be sure to remove all traces of perimeter adhesive from the phone frame.
- ✦ If you are re-using the back cover, carefully remove all traces of adhesive from the back cover.
- ⓘ The glass back cover is fragile and prone to cracking. Don't apply uneven pressure to the back cover as you clean.
- You may pull up chunks of the cover's color coating as you remove the adhesive. To reduce the chances of this occurring, apply heat or high concentration isopropyl alcohol to the adhesive to weaken it.

Step 8



- ✦ If your replacement back cover did not come with a flash diffuser or camera bezel, you will need to transfer them from your old cover to the new one.
- Apply a heated iOpener directly over the bezels for a minute.
 - Use an opening pick to slice around the flash diffuser to loosen the adhesive.
 - ⓘ The flash diffuser is made of plastic and cracks easily. Be sure to slice around the flash completely before you pry it off.
 - Use an opening tool to pry up and remove the camera bezel.
 - Transfer the parts to your replacement cover.

To reassemble your device, follow these instructions in reverse order.

Repair didn't go as planned? Try some [basic troubleshooting](#), or ask our [Mate 10 Answers community](#) for help.