



Samsung Galaxy S III Plastic Midframe Replacement

Replace the Plastic Midframe in your Samsung Galaxy S III.

Written By: Walter Galan



INTRODUCTION

Use this guide to replace the plastic midframe.



TOOLS:

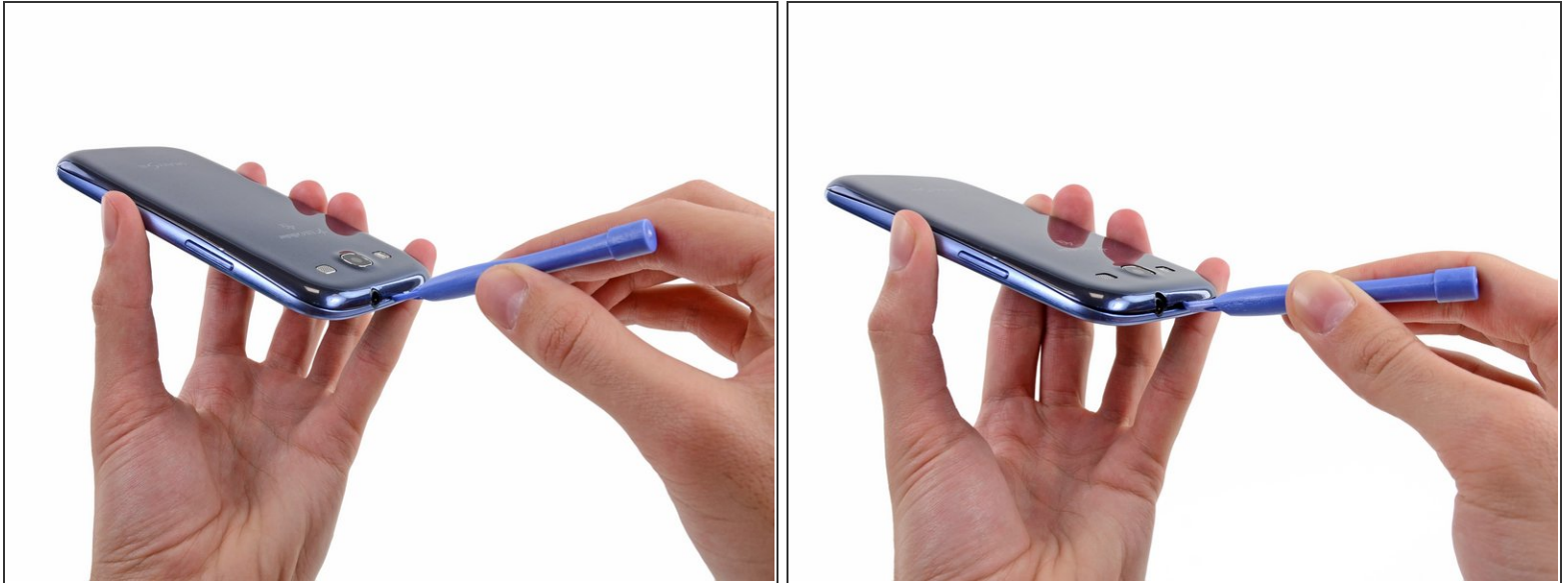
- [iFixit Opening Tool](#) (1)
- [Phillips #00 Screwdriver](#) (1)



PARTS:

- [Galaxy S III Midframe \(ATT\)](#) (1)
- [Galaxy S III Midframe \(T-Mobile\)](#) (1)
- [Galaxy S III Midframe \(Verizon\)](#) (1)
- [Galaxy S III Midframe \(Sprint\)](#) (1)
- [Galaxy S III Camera Lens Cover](#) (1)

Step 1 — Rear Case



- i** The following four steps can be accomplished without a plastic opening tool. However, it's recommended to use a tool to best avoid breaking any clips along the perimeter of the rear case.
- Insert a plastic opening tool or fingernail into the notch in the gap between the rear case and the rest of the phone, located at the top of the device.
 - Gently twist the opening tool to disconnect the clips securing the top of the rear case.

Step 2



- Slide the plastic opening tool left along the top edge and repeat the twisting motion to widen the gap between the rear case and the phone.

Step 3



- Continue to move the plastic opening tool around the perimeter of the top left corner, gently prying up along the rear case.

Step 4



- Pry along the top right side, and continue prying down the right side of the rear case.

Step 5




- Lift up and remove the rear case from the phone.

i You may need to peel the case up to separate it from any clips still holding it to the bottom of the phone.

Step 6 — Battery



 This step can be accomplished without the need of a plastic opening tool. Just use your finger if you want to.

- Wedge a plastic opening tool into the small notch above the battery.
- Pry the battery up out of its recess.


Step 7



- Remove the battery.

Step 8 — SIM Card



- Using your fingernail, push the SIM card slightly deeper into its slot, until you hear a click.
 - After the click, release the card and it will pop out of its slot.
-  For reassembly, push the SIM card into the slot until it clicks in place.

Step 9



- Use your thumb to slide enough of the SIM card out of its slot to grab ahold of it.
- Grasp and remove the SIM card away from the phone.

Step 10 — microSD Card



- Using your fingernail, push the microSD card slightly deeper into its slot, until you hear a click.
 - After the click, release the card and it will pop out of its slot.
- ✦ For reassembly, push the microSD card into the slot until it clicks in place.

Step 11



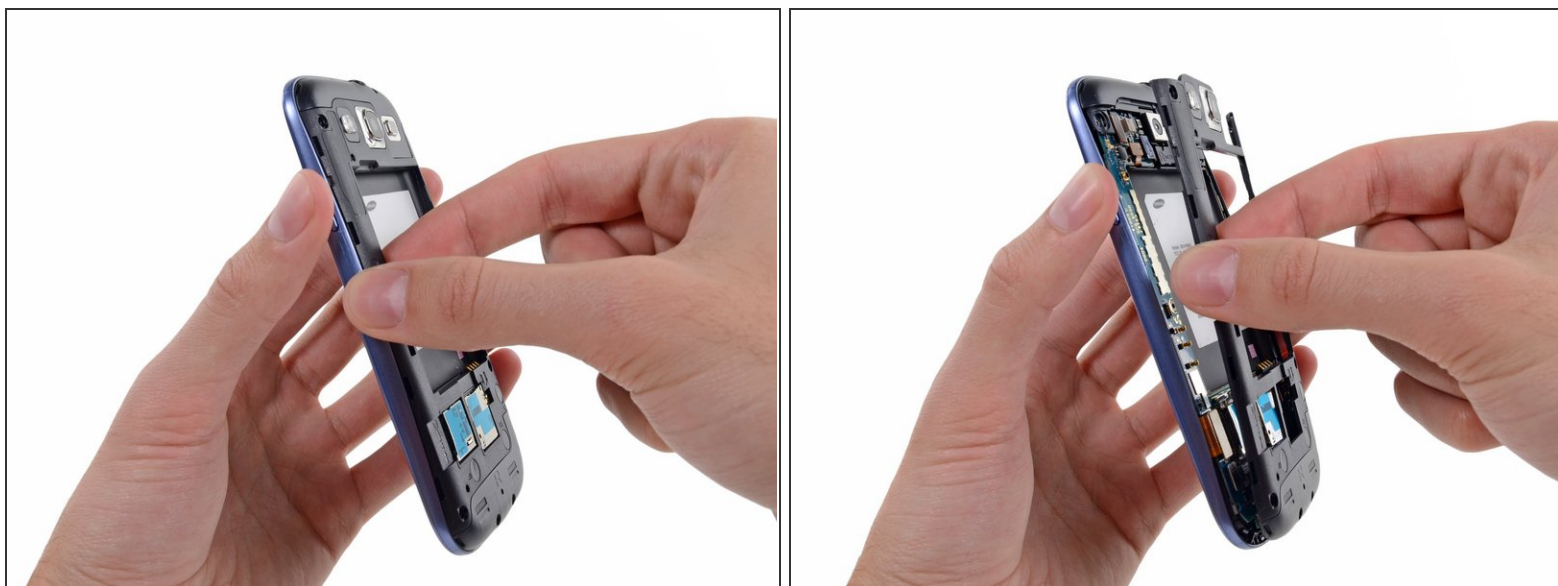
- Use your thumb to slide the microSD card out of the slot.
- Remove the microSD card from the phone.

Step 12 — Plastic Midframe



- Remove the ten 4.0 mm Phillips screws securing the midframe to the front panel assembly.

Step 13



- Grasp the left side of the plastic midframe with your thumb and forefinger and lift it away from the phone.
- ⓘ The midframe lightly snaps in place, and can be removed with very little force.

To reassemble your device, follow these instructions in reverse order.