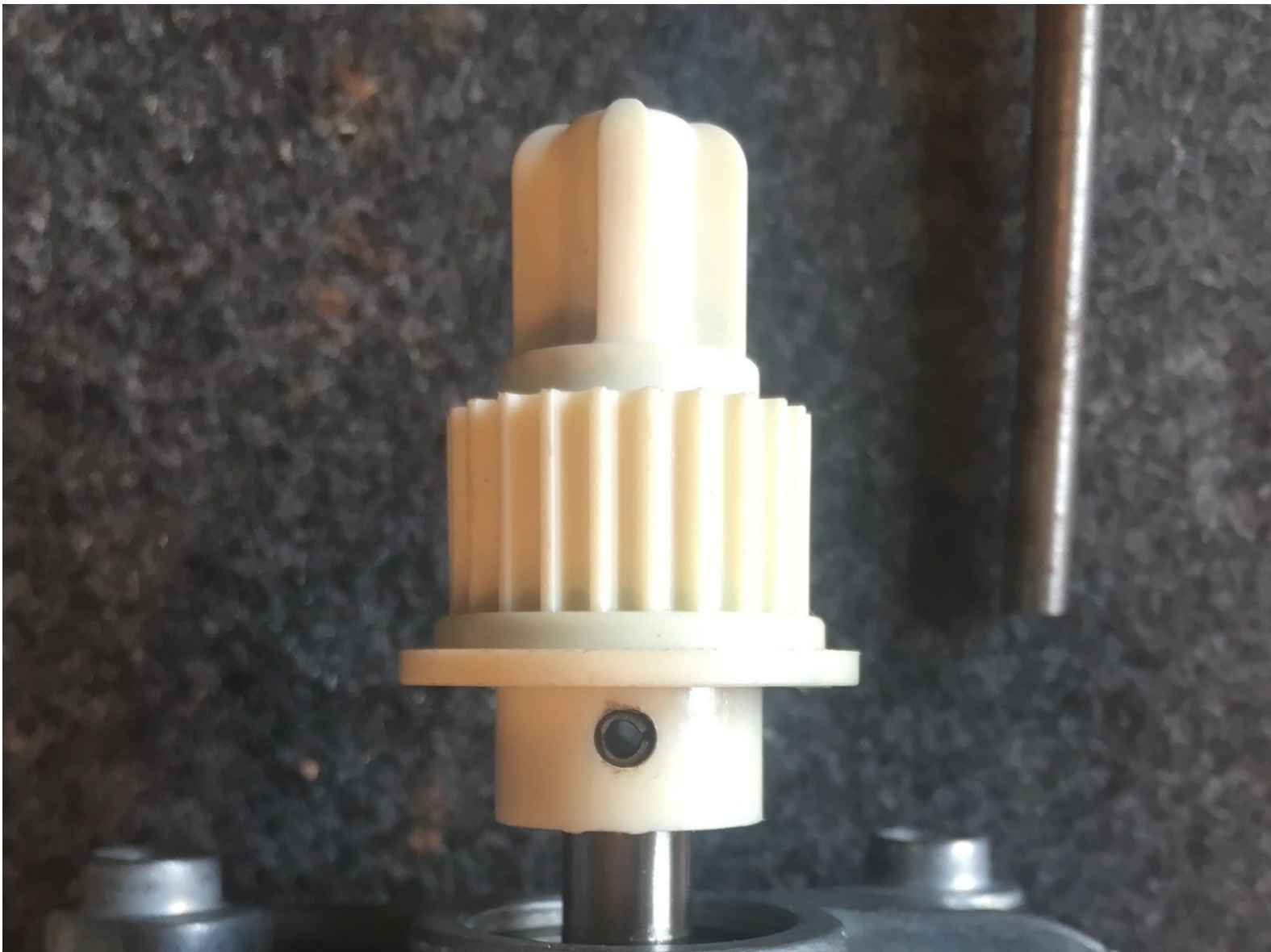




Kenwood Chef Drive Gear replace

Replace the Drive Gear in your Kenwood KVC5

Written By: Dominik Kübelsbeck





PARTS:

- [New Item](#) (1)

KW715804

Step 1 — Tools



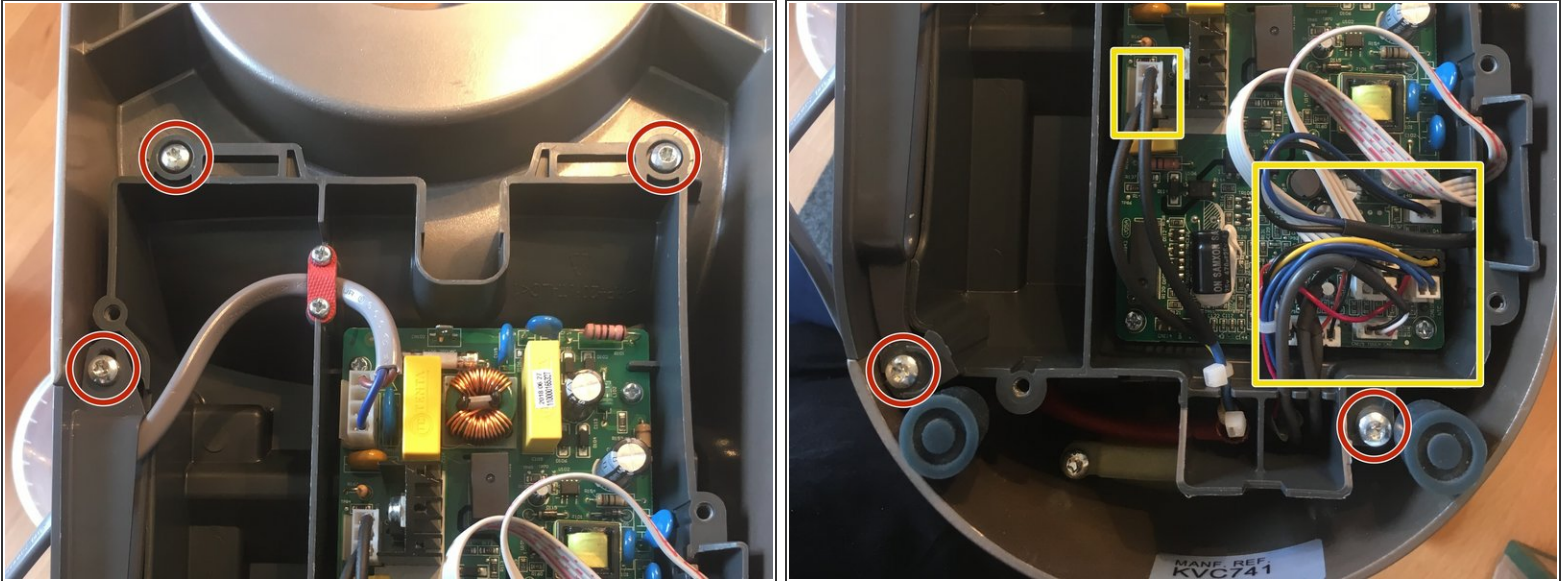
- Prepare your Tools.

Step 2 — Open Electronic box



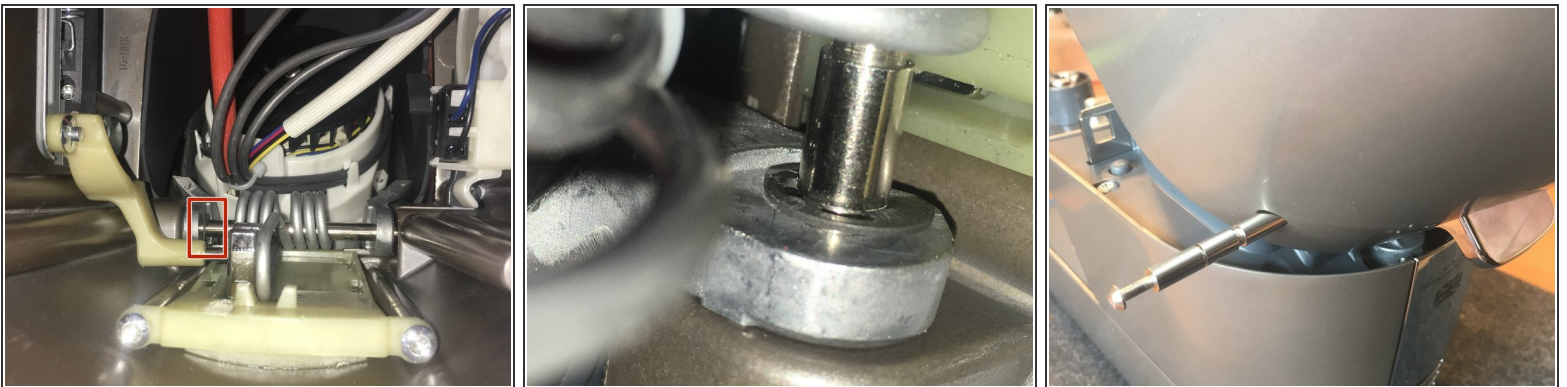
- Remove five Screens T20 from the bottom and lift the bottom plate up.

Step 3 — Remove electronic box



- Separate nine cables.
- Remove all screws from the electronic box.
- Remove the electronic box.

Step 4 — Loosen the tilt mechanics



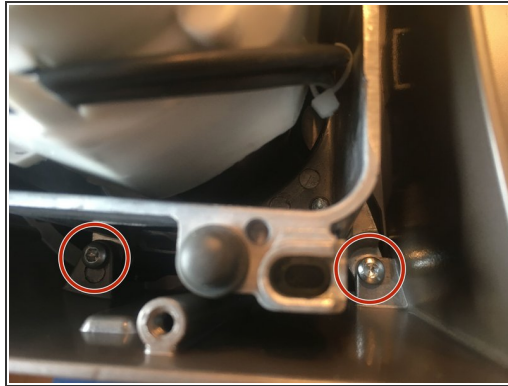
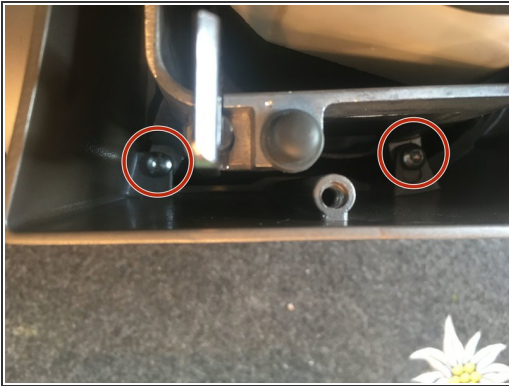
- Tilt the machine head.
- Remove the security washer from the hinge axle.
- Remove the axle and the machine stand.

Step 5 — Spring and design plate



- Pull the spring out.
- Remove the screw.
- Remove the design plate.

Step 6 — Remove cover



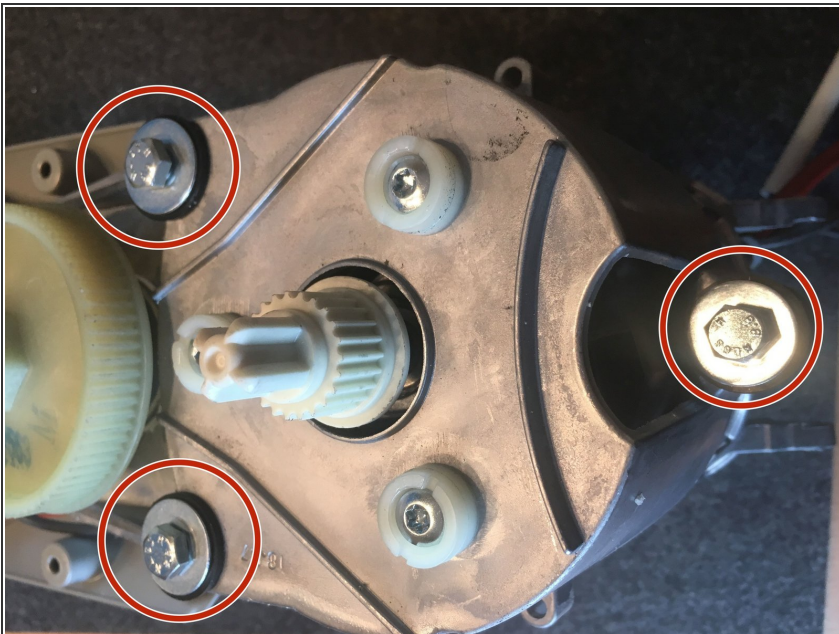
- Remove four screws T20.
- Remove the cover.

Step 7 — Remove top cover



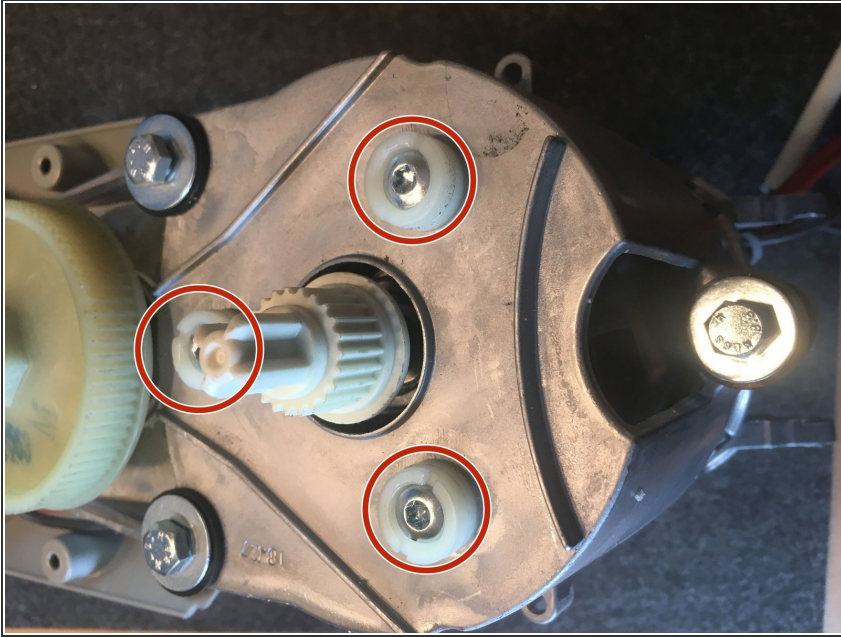
- Remove two screws T20.
- Remove the top cover. Note: the cable connecting the top cover and the lower case is very short.
- Remove the screws from the "Light on/off"-unit and separate it from the top cover.

Step 8 — Remove motor cover



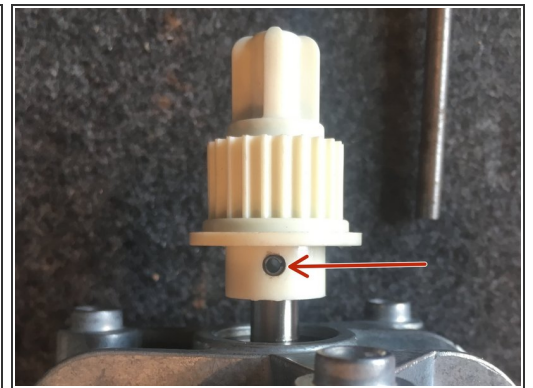
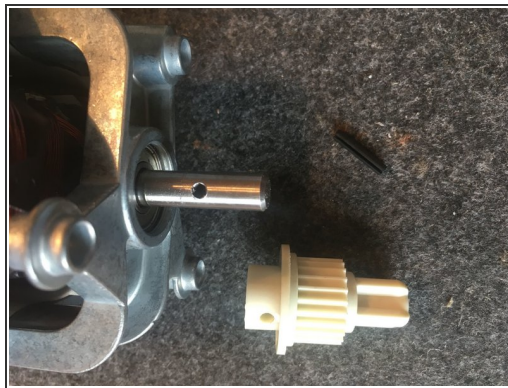
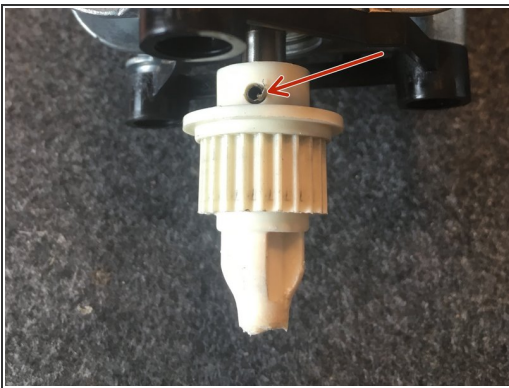
- Remove three screws T20 and the washers.
- Take the cover off.

Step 9 — Motor



- Remove three screws T20 and the plastic washers.

Step 10 — Remove drive gear



- Using a punch and a hammer push out the pin. (Note: support the gear on the opposite side to protect the the motor shaft from damage).
 - The gear ist free.
- ☒ When inserting the pin, support the gear on the opposite side to protect the the motor shaft from damage.

To reassemble your device, follow these steps in reverse order.

This document was generated on 2021-02-27 11:00:22 PM (MST).

