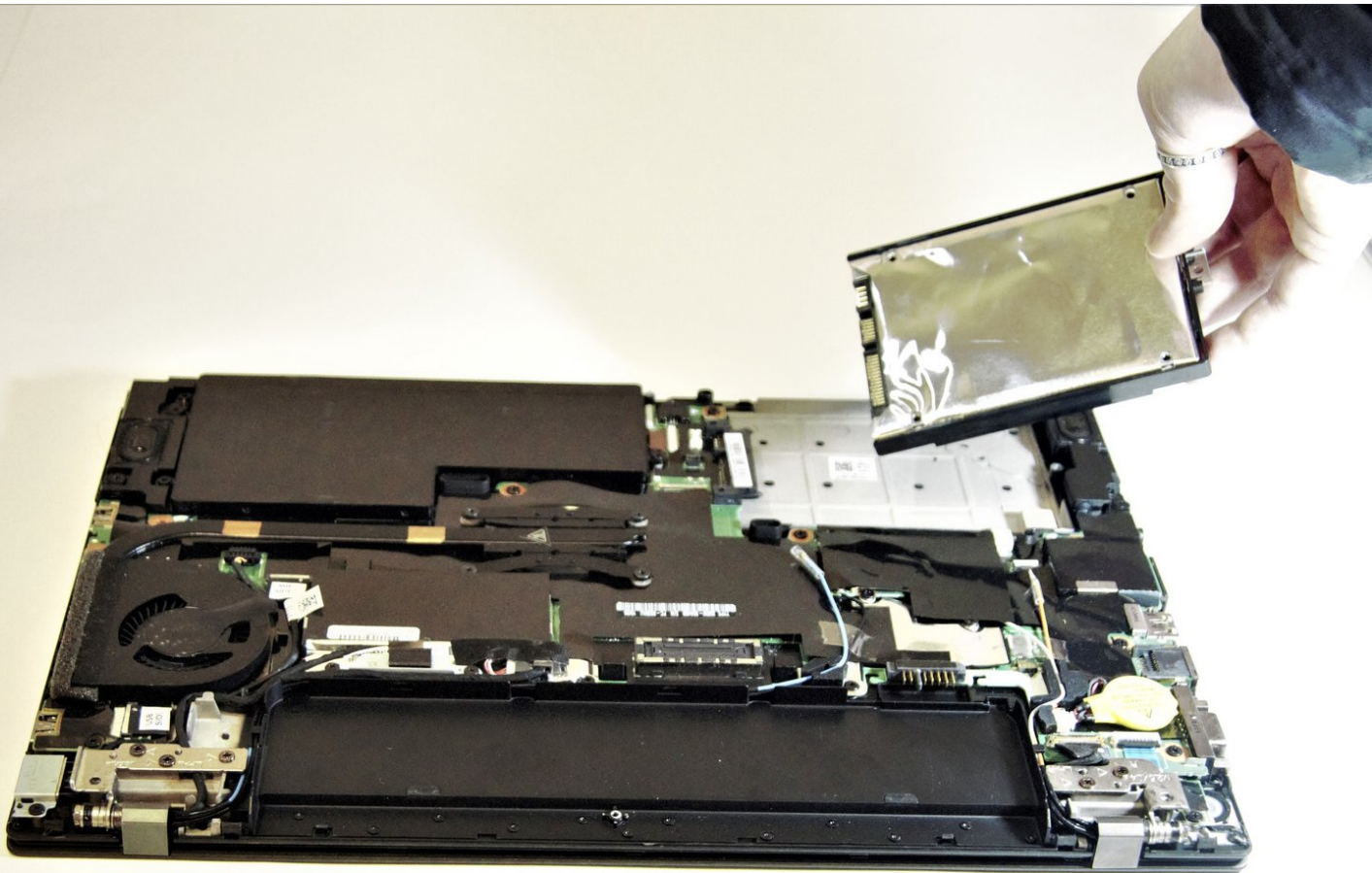




Lenovo Thinkpad T450s Hard Drive Replacement

How to replace the hard drive on your Lenovo ThinkPad t450s

Written By: Hayden Hausman



INTRODUCTION

If when using your device you notice that programs keep crashing or you run into frequent error messages then it might be time to replace your Hard Drive. In this guide you will finds step by step instructions on how to do so.



TOOLS:

- [Phillips #0 Screwdriver](#) (1)
- [Metal Spudger](#) (1)



PARTS:

- [1 TB SSD / Upgrade Bundle](#) (1)
- [250 GB SSD / Upgrade Bundle](#) (1)
- [500 GB SSD / Upgrade Bundle](#) (1)
- [2 TB SSD](#) (1)

Step 1 — Battery



- Turn off device before starting
- ❗ Flip the laptop upside down so you have access to the battery.

Step 2



- Slide lock button 1 to the unlock position and gently slide away from your body.

Step 3



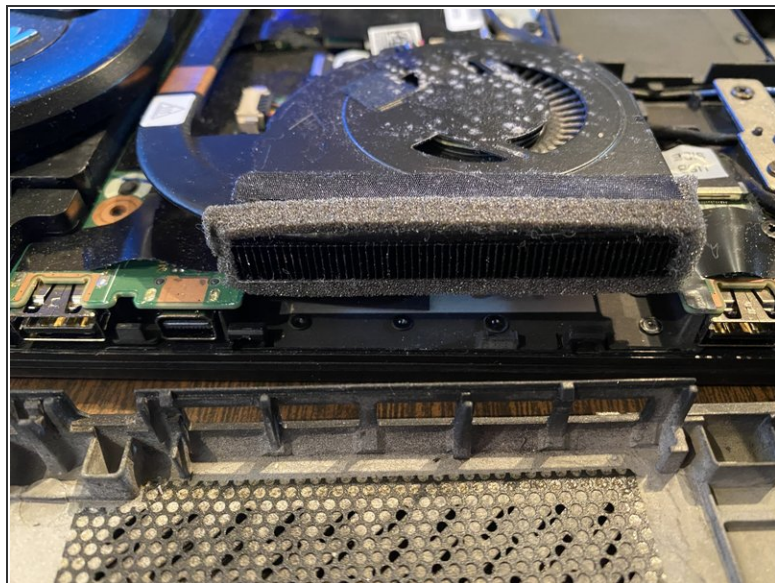
- Slide lock button 2 to the unlock position and continue gently sliding until the battery is removed.

Step 4 — Lenovo Thinkpad T450s Bottom Panel Removal



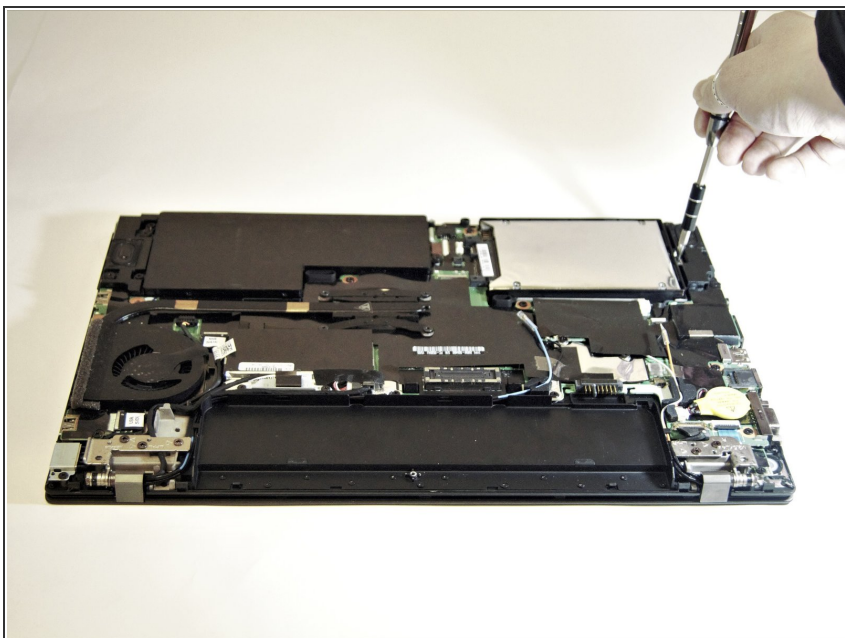
- Flip the device over and lay it down with the underside facing upwards.
- Unscrew all 8 screws. While they should not come out completely, in some cases, the plastic retaining washers may come off of one or more of the screws, allowing them to come out completely. - should this happen, look for a loose, tiny black plastic washer once the case is open. It's possible, in some cases, to reattach the retaining washer.

Step 5



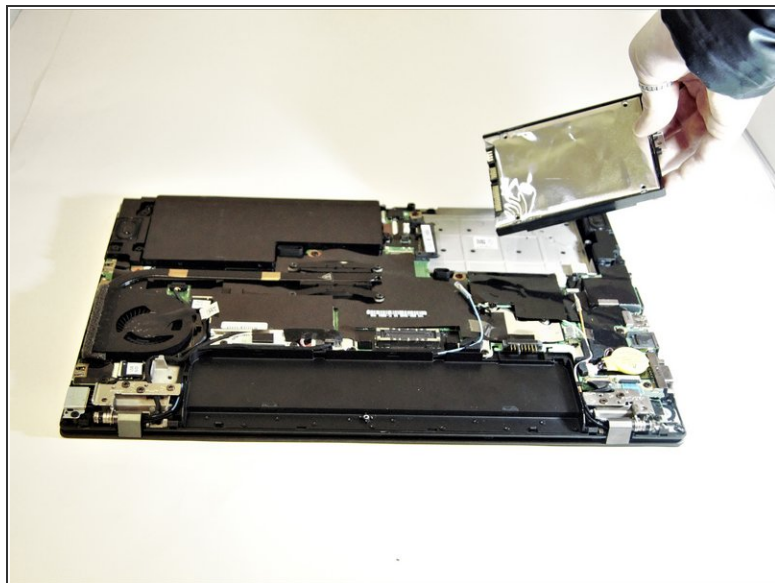
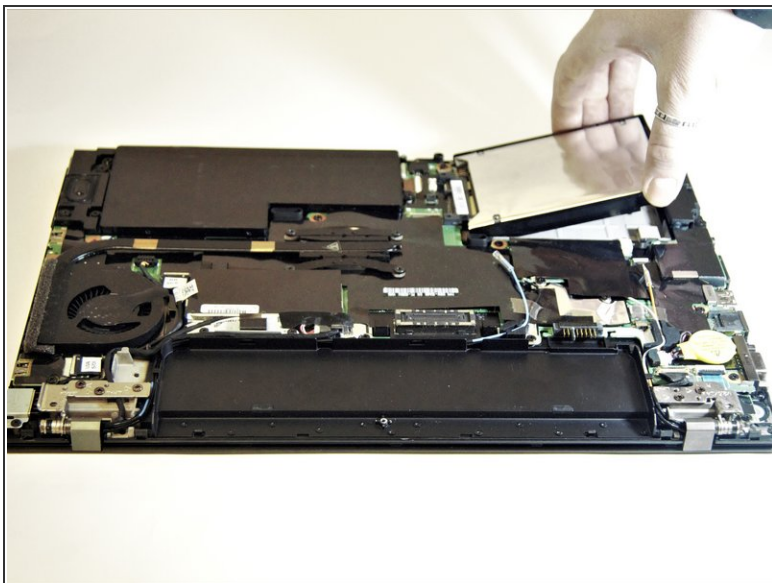
- Pry the bottom from the computer until it pops out.
- In some cases, the vented side of the case may cling to the heat sink; appears to be adhesive. Take care when separating.

Step 6 — Hard Drive



- Unscrew the single screw that holds the hard drive in place.

Step 7



- Gently pull the hard drive to the right side and out of the socket that holds it in place.
- Gently remove the plastic housing and foil shield. You might need these for the replacement drive.

To reassemble your device, follow these instructions in reverse order.