



# Xbox Teardown

Teardown of the 1st Xbox

Written By: Tyler Worwa



---

 **TOOLS:**

- [iFixit Opening Tool](#) (1)
  - [Spudger](#) (1)
  - [Mako Driver Kit - 64 Precision Bits](#) (1)
-

## Step 1 — Xbox Teardown



- First you need to remove 6 screws using a T 20 screwdriver. Two are hidden in 2 stickers.

## Step 2



- Lift the top part of the Xbox. It can be hard.

### Step 3



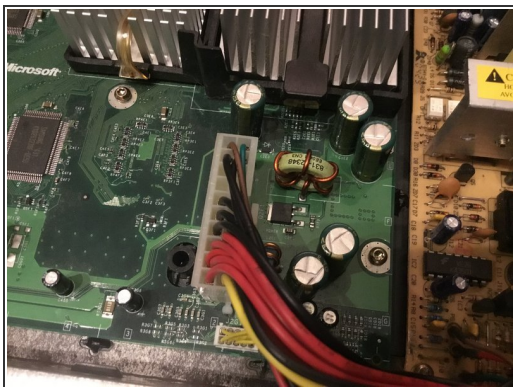
- Now you need to remove 2 cords. The power cord can be tricky. Remove 1 screw using a T 10 screwdriver.

### Step 4



- You should lift the hard drive. Remove 2 cords and remove 2 screws. After removing the disk drive, you've made it to the motherboard.

## Step 5



- Now remove this cord and remove the 2 screws holding the power supply. Yup that's the power supply.

## Step 6



- Take out 2 remaining cords and 4 cords shown in this picture. Look at how many screws you need to remove (there's eleven, in case you're wondering).

## Step 7



- And finally take out the big green motherboard.