



Microsoft Xbox 360 Wireless Gaming Receiver, fuse replacement

Apologies for the state of this guide, it was...

Written By: Endorph



INTRODUCTION

Apologies for the state of this guide, it was created in minutes, though I hope it can be of help, please feel free to improve it!



TOOLS:

Soldering Iron 60w Hakko 503F (1)

Lead-Free Solder (1)

Phillips #0 Screwdriver (1)



PARTS:

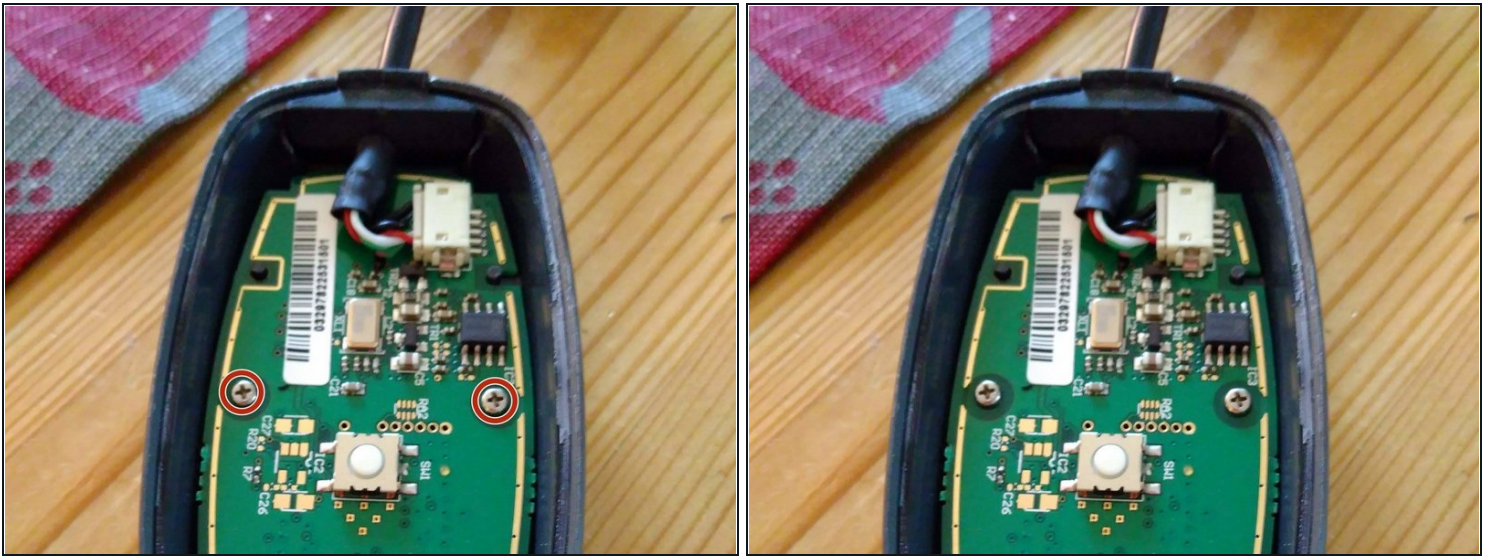
IR LED (1)

Step 1 — The faulty receiver



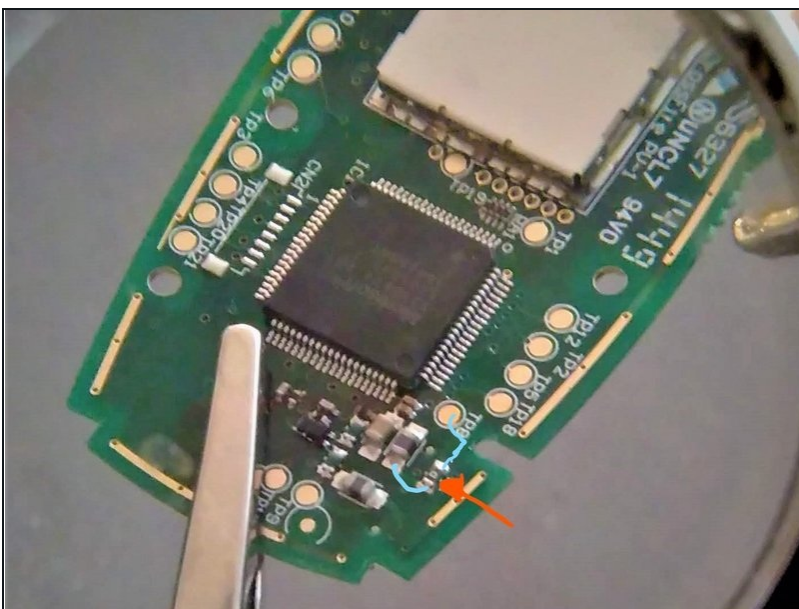
- The LED should be green when it is connected, here it is completely off.
- The device does not show up at all in the device manager and windows does not react in any way when connected.

Step 2 — Opening



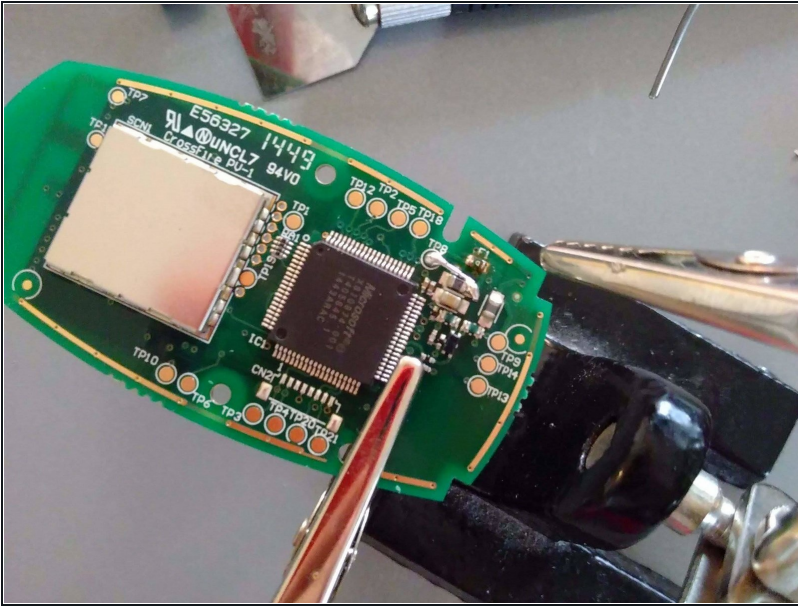
- This involves prying and will probably scratch the shell.
- Start at the cable side using a sharp prying tool or similar
- When the lid has been removed, there are two tiny Phillips #0 screws that need to be removed.

Step 3 — Locate the faulty fuse



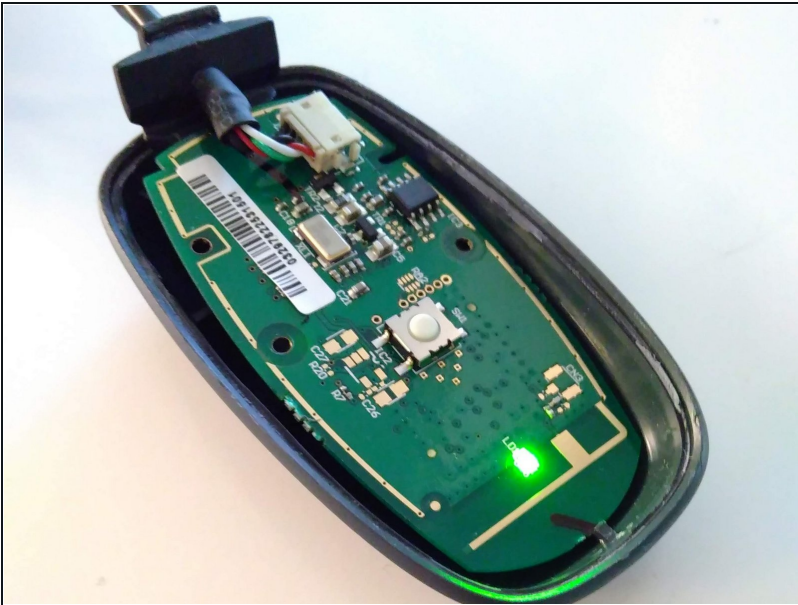
- At the side facing down, close to the cable connector there is a fuse (located by the red arrow)
- The blue lines shows the circuit that is usually closed if the fuse hasn't blown.
- Measure the resistance of the fuse, if it is higher than 1000 ohm (in my case 20 kOhms) consider it to be faulty

Step 4 — Short the fuse or replace it



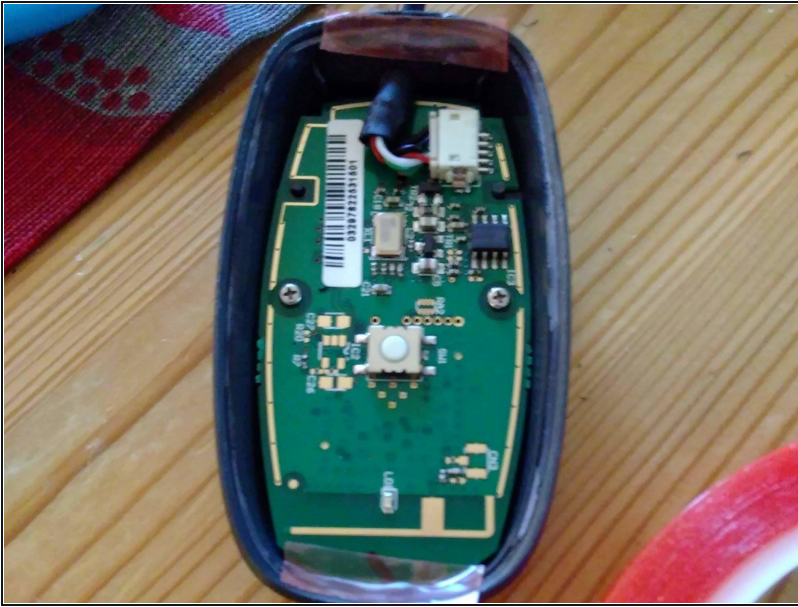
- I used a piece of LED - leg and bent it properly to create a perfect short-wire.
- Be careful when you solder, you do not want lead anywhere else!

Step 5 — Function test



- It's alive!

Step 6 — Reassembly



- I used double sided molding tape (red), in the upper and lower part of the chassi.
- Put the screws back and align the board properly.
- Using glue is an alternative, though troublesome if you would ever want to reopen it.