



# Sony Cassette Deck TC KE200 Repair

Fix problem cant play cassette. Replace internal belts.

Written By: Cafony



# INTRODUCTION

In this guide, we will be replacing the Motor Belt on the Sony Cassette Deck TC KE200

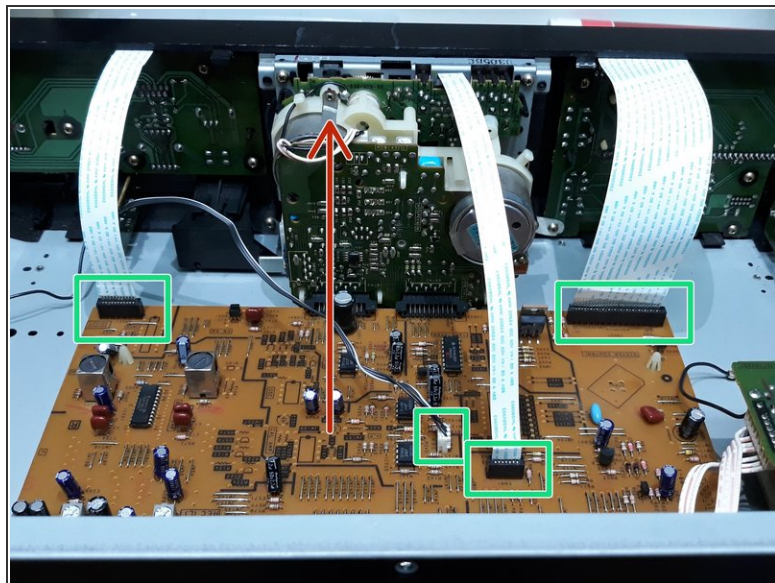
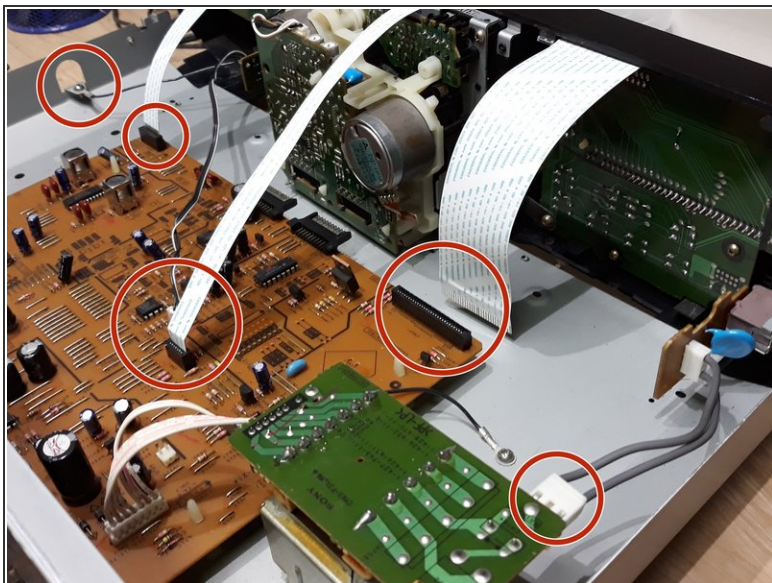
## Step 1 — Motor Belt



- Remove the screws from the bottom.
- Remove the screws from the side.
- Carefully remove the cassette deck from the metal base.

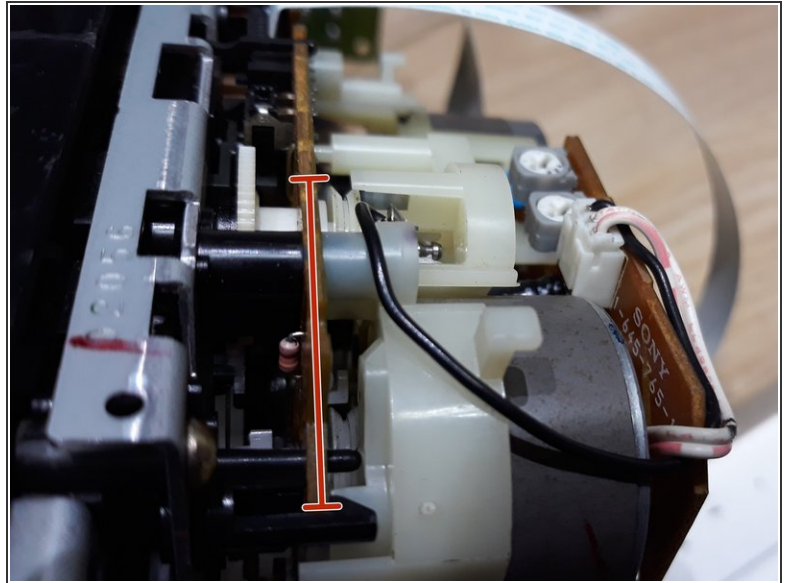
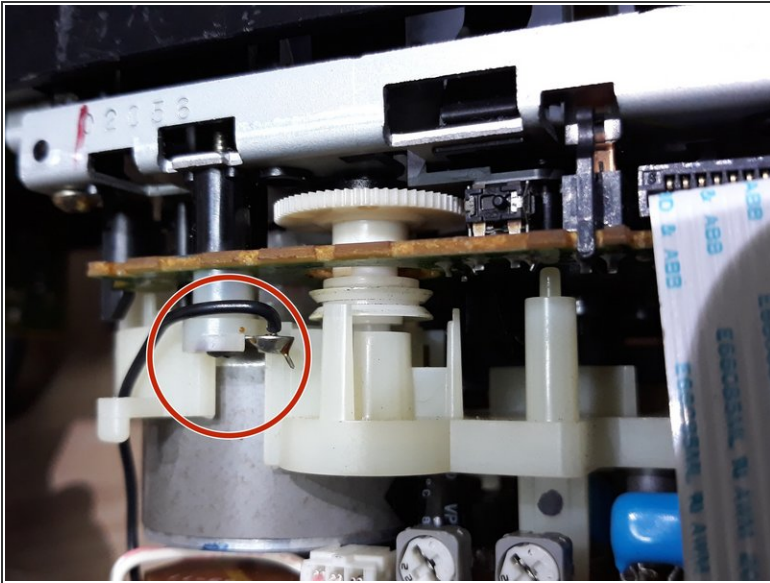


## Step 2



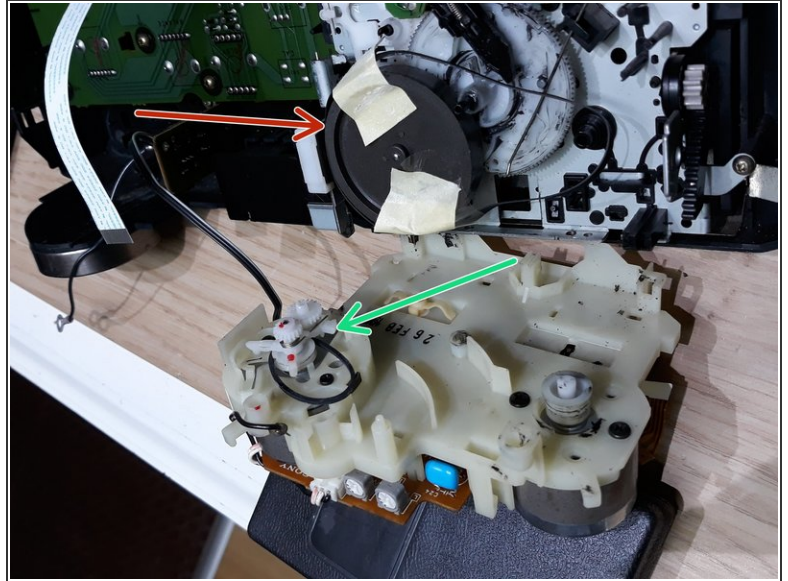
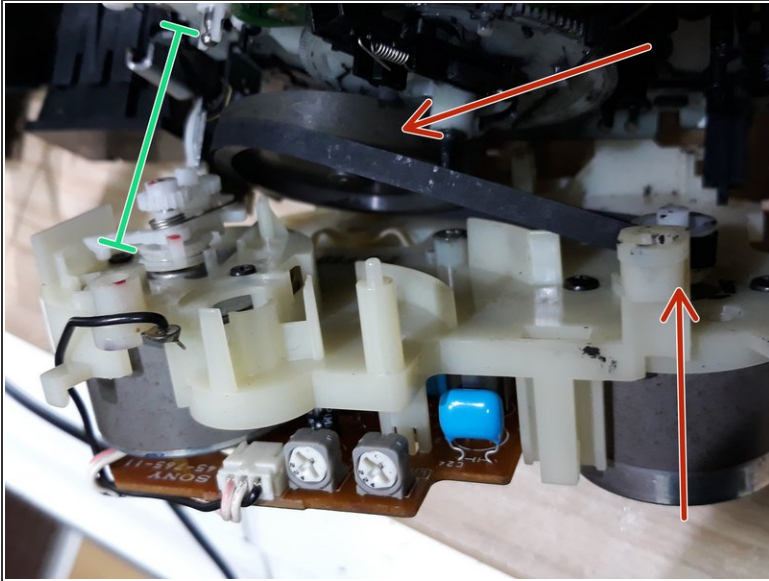
- Remove the black cable on the left side.
- Remove the white flat ribbon cables.
- Remove the small screw in order to change the ruble inside the cassette player mechanisms.
- Remove the gray power cables.

### Step 3



- Remove the small screw.
- Now you should be able to see the wheel location. Change the rubber.

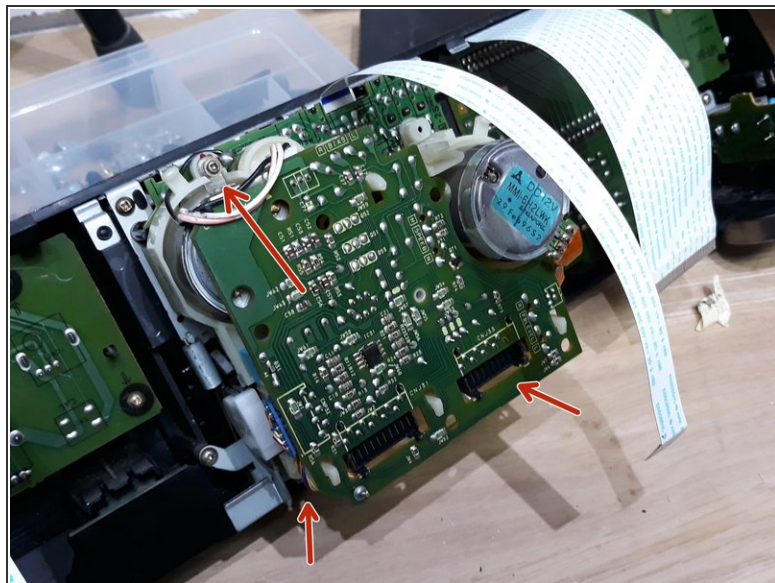
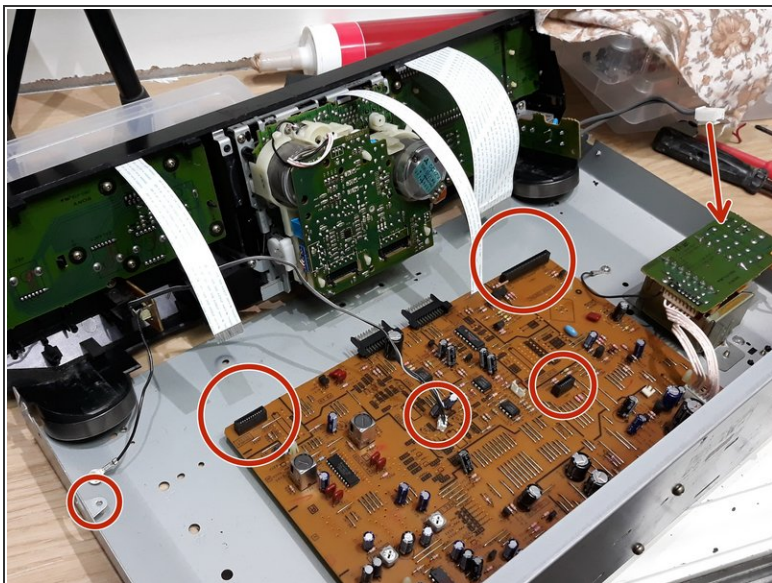
## Step 4



- Replace the big belt.
- Replace the small (green) belt.
- Use a little tape to hold the belt. When closing, remove the tape.



## Step 5



- Insert the small screw and close the cassette player with new straps.
- Connect all cables and flat, white ribbon cables.
- Close everything up and you're done with the repair!
- Hope this repair helped you, please leave a comment!

To reassemble your device, follow these instructions in reverse order.