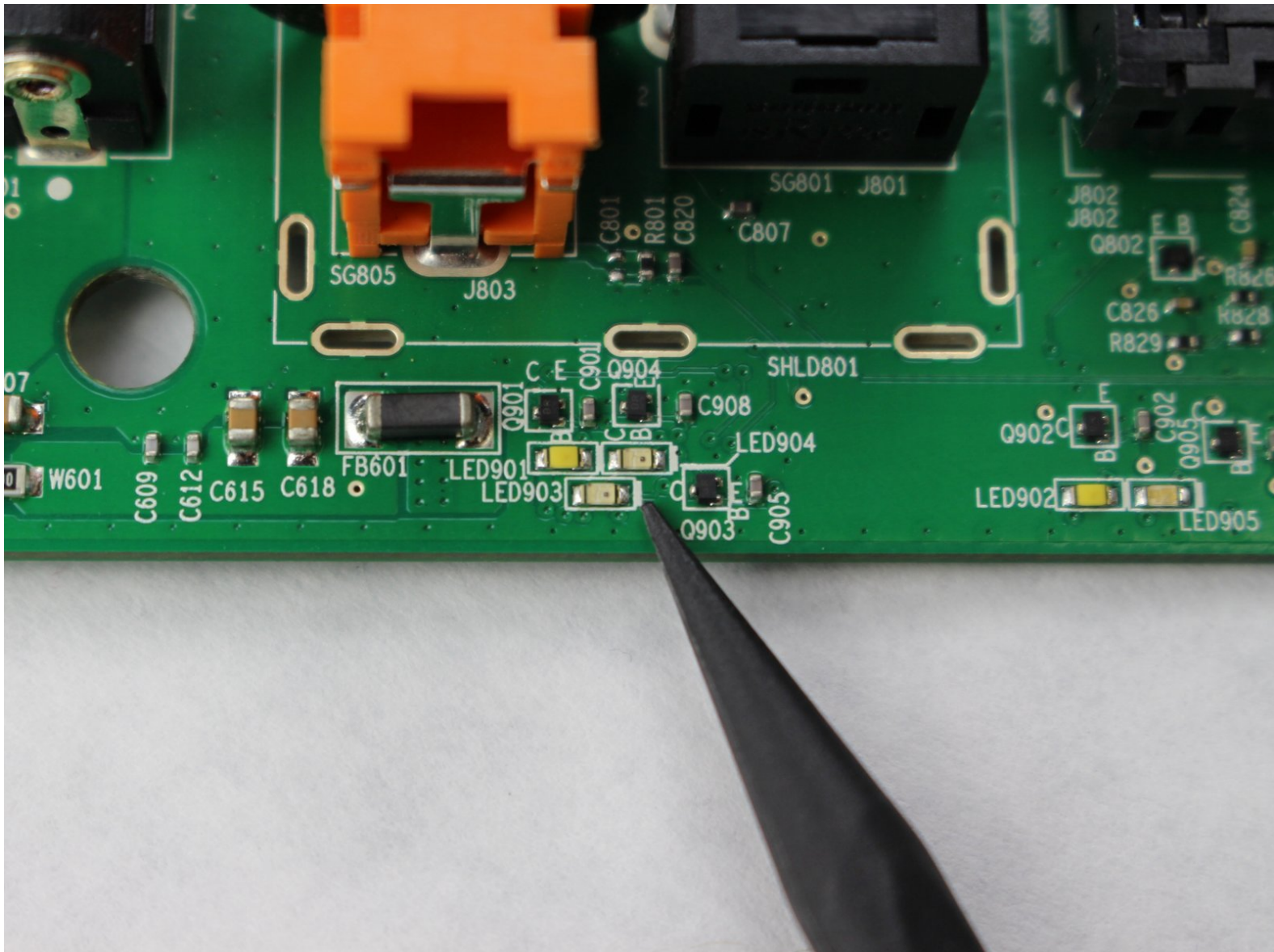




# Bose Solo 5 Sound Bar Indicator Light Replacement

How to replace a Bose Solo 5 Sound Bar indicator light.

Written By: Emma



---

## INTRODUCTION

This is a step-by-step guide to replacing the indicator light on a Bose Solo 5 Sound Bar (Model # 732522-1110). The Indicator light on this speaker will show when the system is on, and shows the status of the system when in operation. The repair process is classified as a moderate difficulty, and does not require any specialized skills.



### TOOLS:

- [iFixit Opening Tools](#) (1)
  - [Spudger](#) (1)
  - [Phillips #2 Screwdriver](#) (1)
-

## Step 1 — Indicator Light



- Lay the Bose Solo 5 on its side, with the speakers facing away from you. This orientation will result in the bottom of the speaker facing upwards.

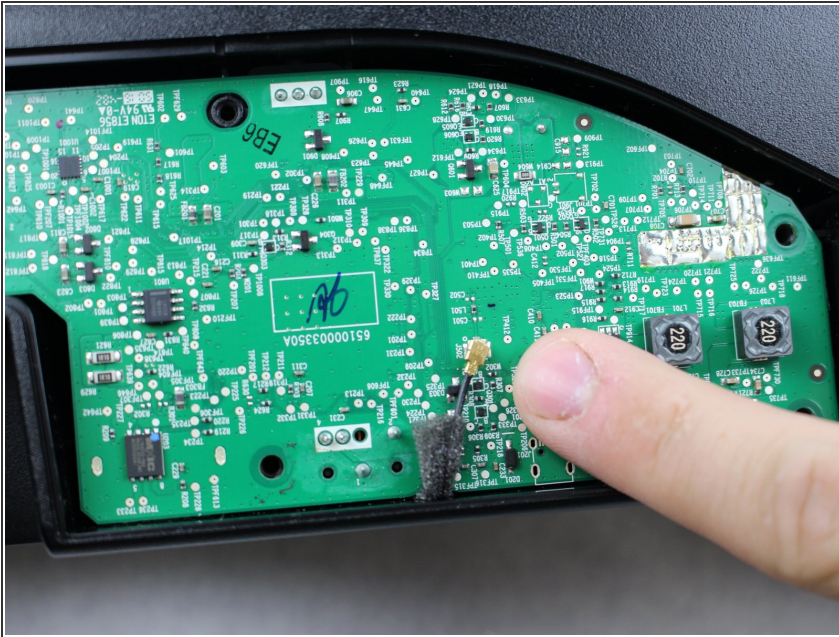
## Step 2



- Remove five 18.25mm screws with a Phillips #2 screw driver.

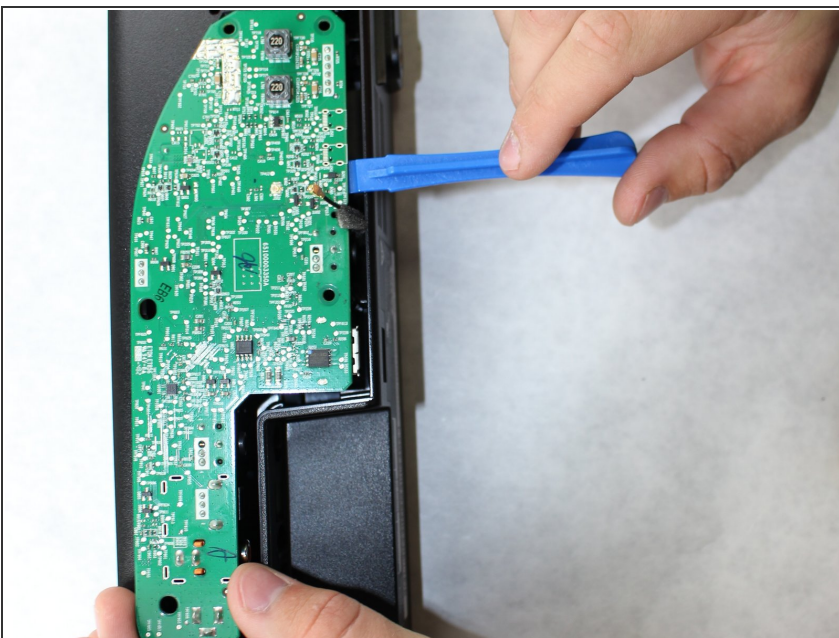


## Step 3



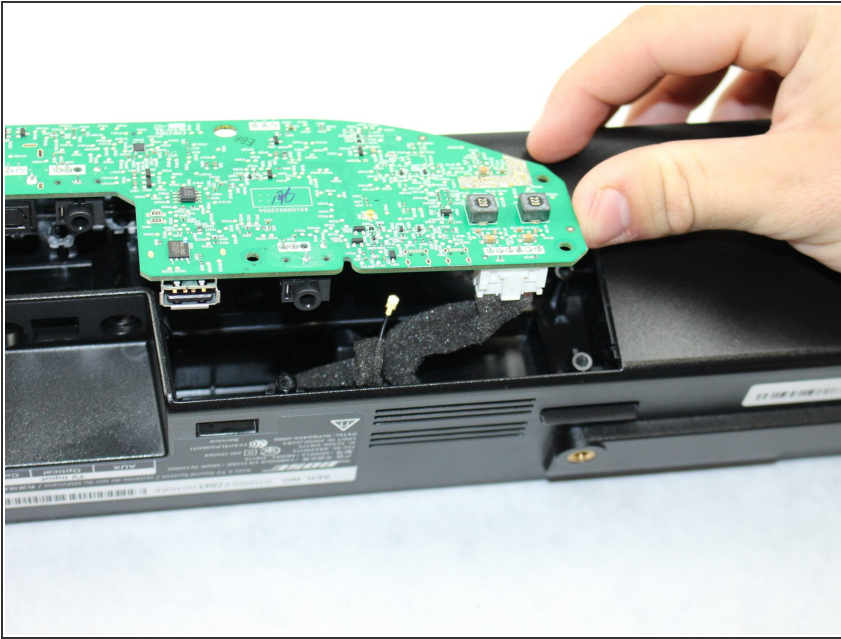
- Gently remove the gold plates and the snap connector from the circuit board by pulling it apart.

## Step 4



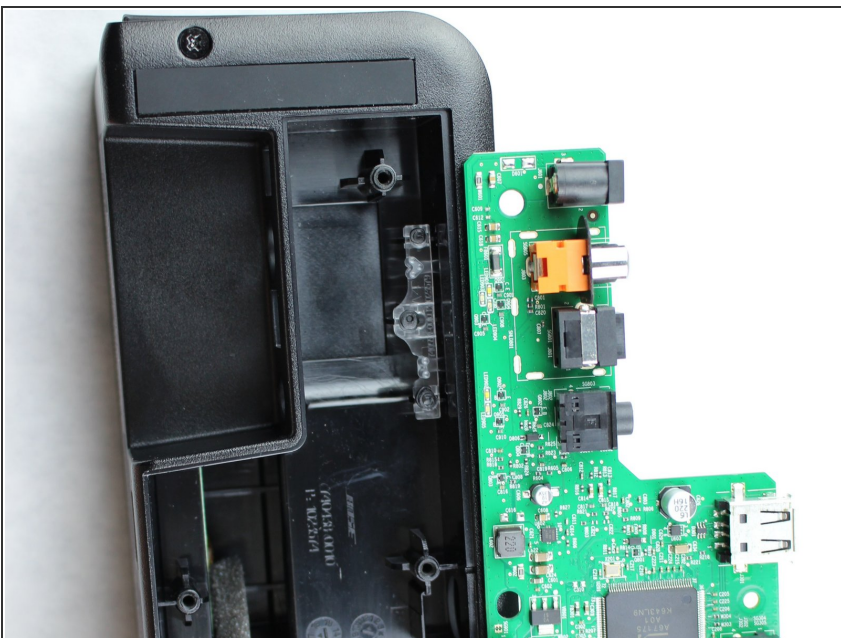
- Using the plastic opening tool, slightly lift the circuit board up and remove it from the housing.

## Step 5



- Disconnect the cords running to the white connector by pulling upon the tab until it is disconnected completely.

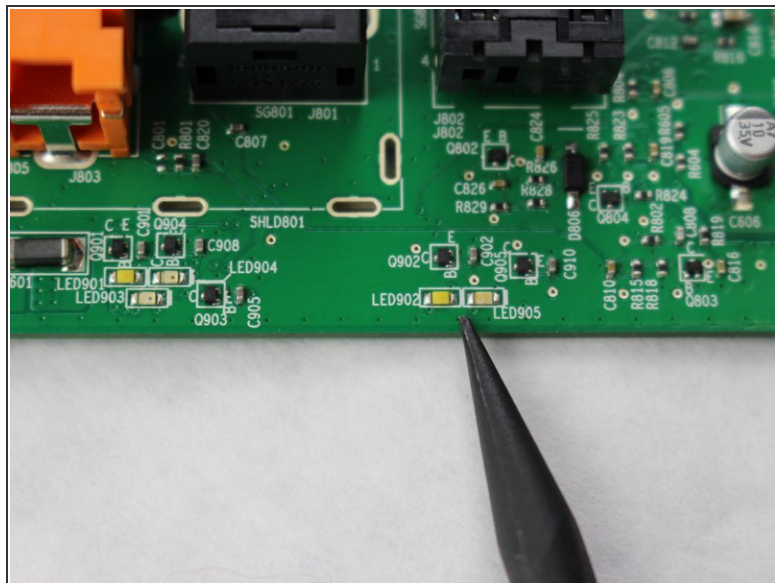
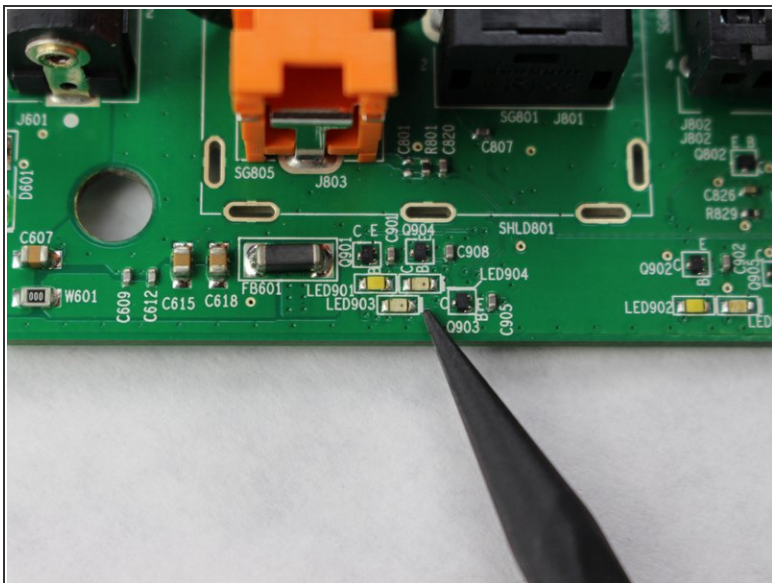
## Step 6



- Locate the two clear LED receptors and note that one has two prongs and the other has three prongs.

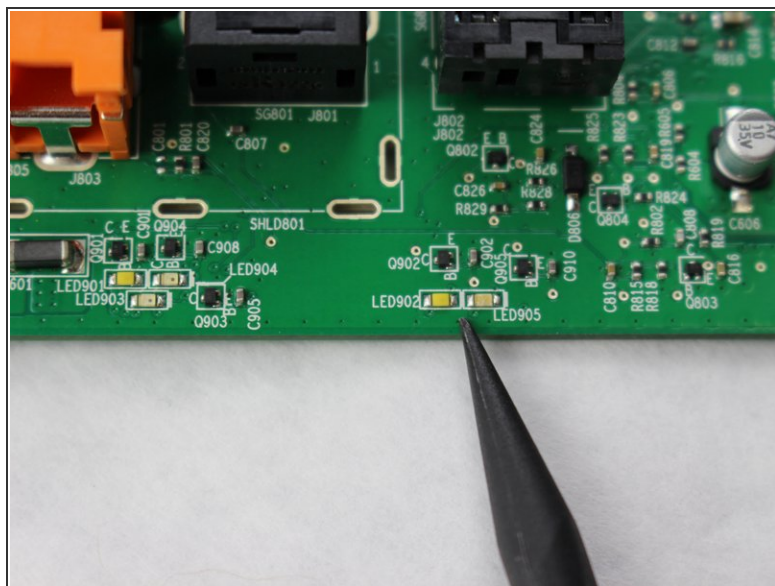
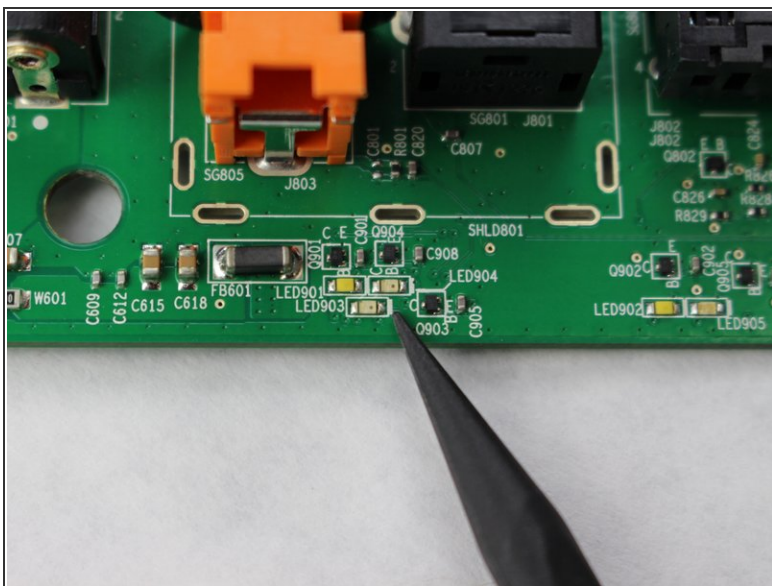


## Step 7



- Locate on the back of the control panel where it states LED 902, 903, 904, and 905.

## Step 8



- If there is any debris located in these locations, use the spudger tool to thoroughly clean the area.

To reassemble the sound bar, follow the steps listed above in reverse order.