



# Dell Precision 5510 Hard Drive Replacement

These are the steps to remove the hard drive...

Written By: Atlanta Phelps



## INTRODUCTION

These are the steps to remove the hard drive from the Precision Dell 5510, see the prerequisites for the back removal, and battery removal.



### TOOLS:

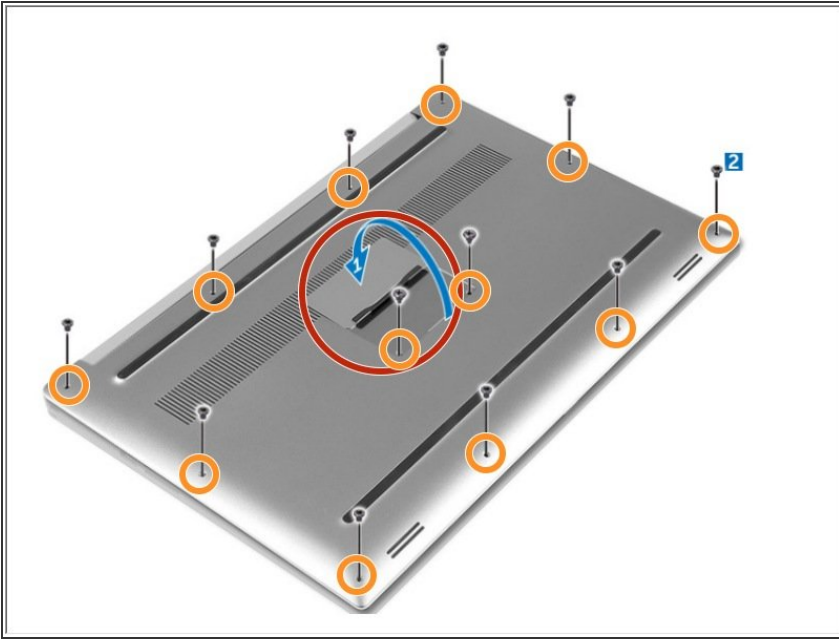
- [JIS #0 Screwdriver](#) (1)
- [Phillips #0 Screwdriver](#) (1)
- [Phillips #1 Screwdriver](#) (1)



### PARTS:

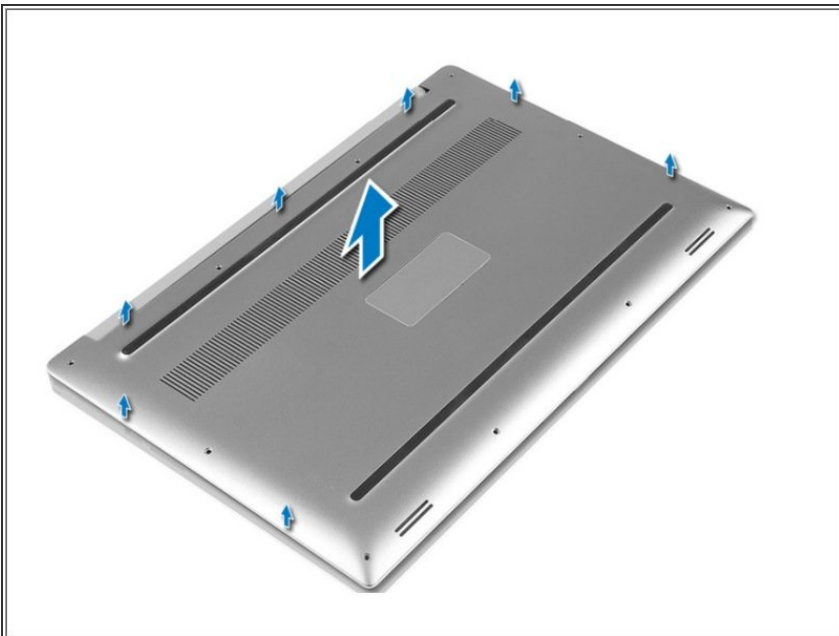
- [1 TB SSD](#) (1)
- [250 GB SSD](#) (1)
- [Crucial MX500 500 GB SSD](#) (1)
- [2 TB SSD](#) (1)

## Step 1 — Base Cover



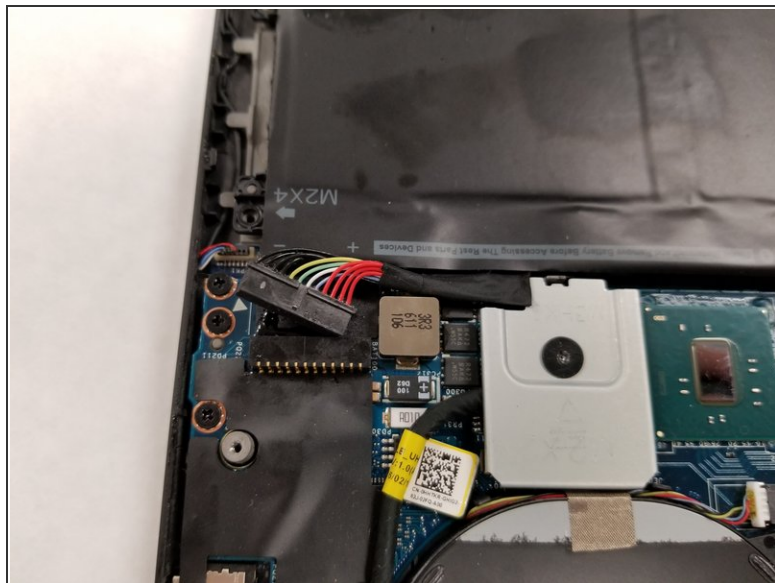
- Open the system badge flap over to reveal the screws underneath (marked 1 on the image).
- Remove the 12 screws that secure the base cover to the computer.

## Step 2



- Pry the edges base cover and lift it to remove it from computer.

## Step 3 — Battery



- Unplug the connection that links the battery to the computer.

## Step 4



- Remove the four 4.0 mm JIS #0 screws surrounding the battery.

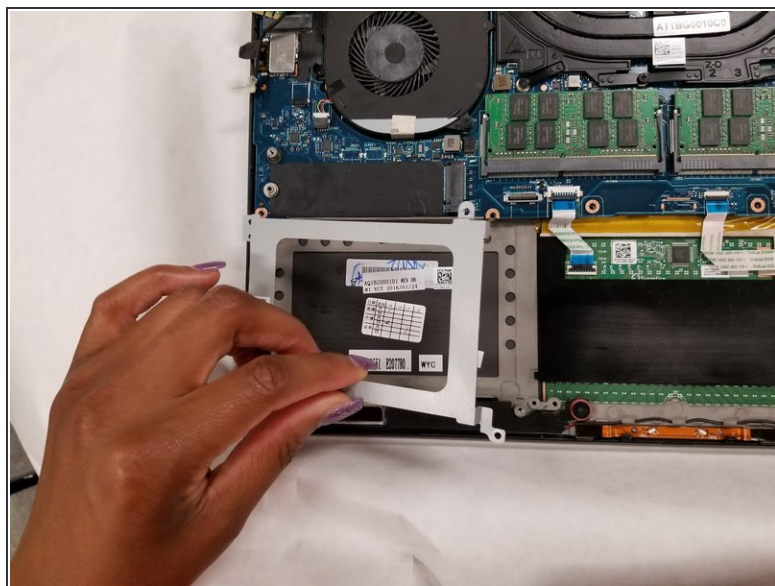
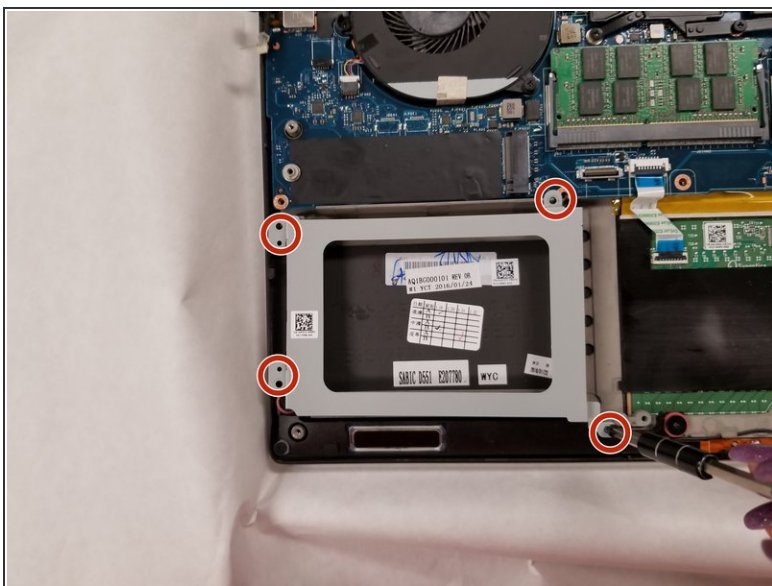


## Step 5



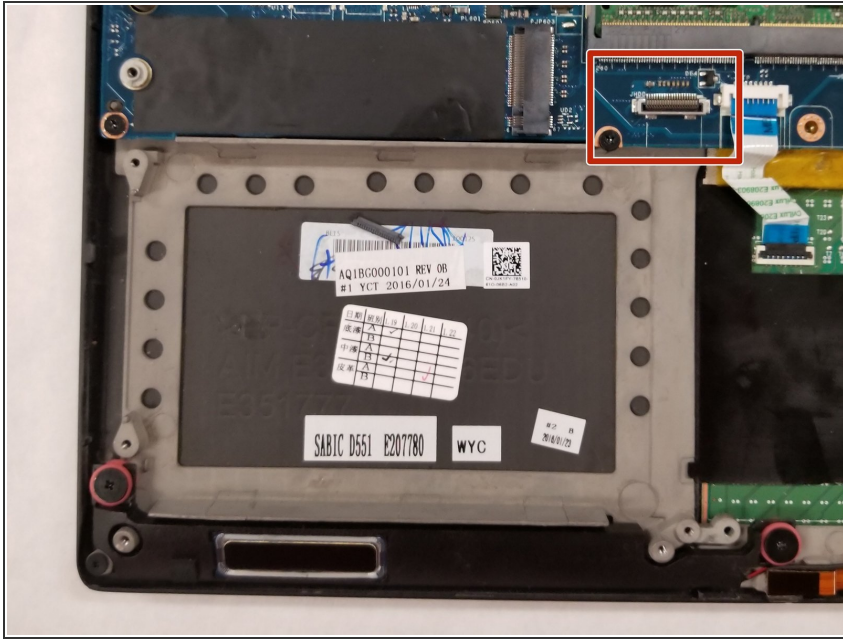
- Carefully remove the battery from the computer.

## Step 6 — Hard Drive



- Remove the four 4.0 mm screws with a Phillips 1 screwdriver, and remove the hard drive bracket.

## Step 7



- Unplug the hard drive, and remove it. (We do not have a hard drive to be shown, but see image for where the hard drive would be unplugged from.)

To reassemble your device, follow these instructions in reverse order.