



Bissell PowerForce Compact Belt Replacement

This guide is about replacing a vacuum cleaner belt Bissell PowerForce.

Written By: Abdulrahman Alkhalifah



INTRODUCTION

This guide shows the users how to replace the Bissell PowerForce Compact vacuum belt using the tools and parts listed in this guide.



TOOLS:

- [Phillips #2 Screwdriver](#) (1)



PARTS:

- [Belt](#) (1)
Durabelt Dirt Devil Style 15 Belt Pkg

Step 1 — Belt



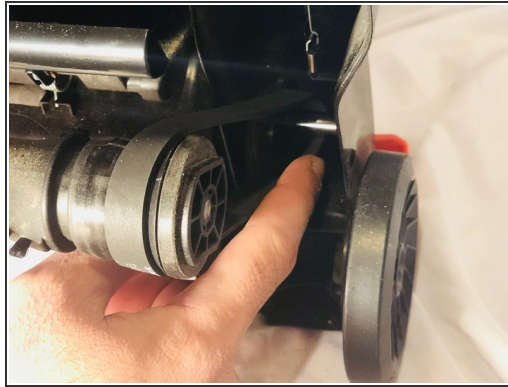
- Remove the 5 screws from the brush plate with the phillips screwdriver.

Step 2



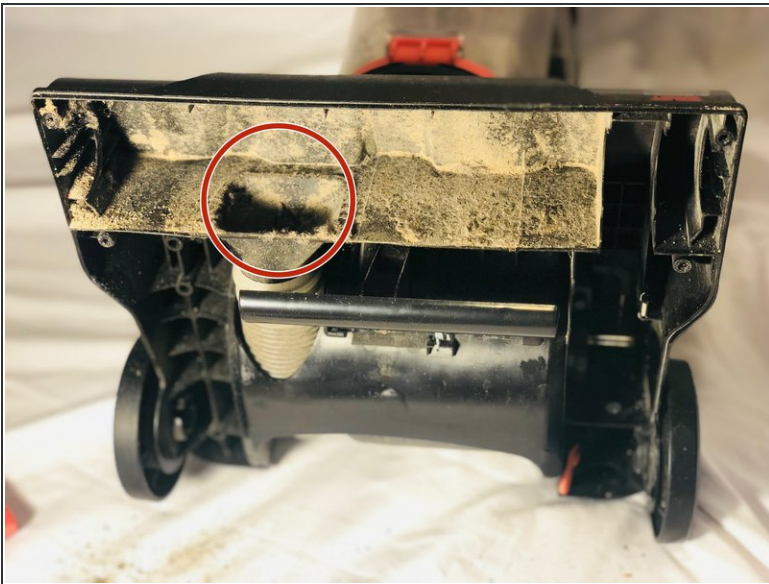
- Lift off the brush plate by grabbing both ends of the plate and lifting the plate up.

Step 3



- Grab the rotating brush at both ends.
- Lift the rotating brush straight out of the vacuum.
- Remove the belt from the motor pulley.

Step 4



- Clear the bottom of the vacuum from any debris that may be blocking air flow.
- Clean the rotating brush from any wrapped string or hair. You can use scissors if needed.

Step 5



- Check the new belt for any damage.
- Place the belt on the rotating brush and then the motor pulley.

Step 6



- Pull the rotating brush with the belt hooked.
- Place the ends of the rotating brush into the slots.
- Rotate the brush a few times to center the belt.

To reassemble your device, follow these instructions in reverse order.