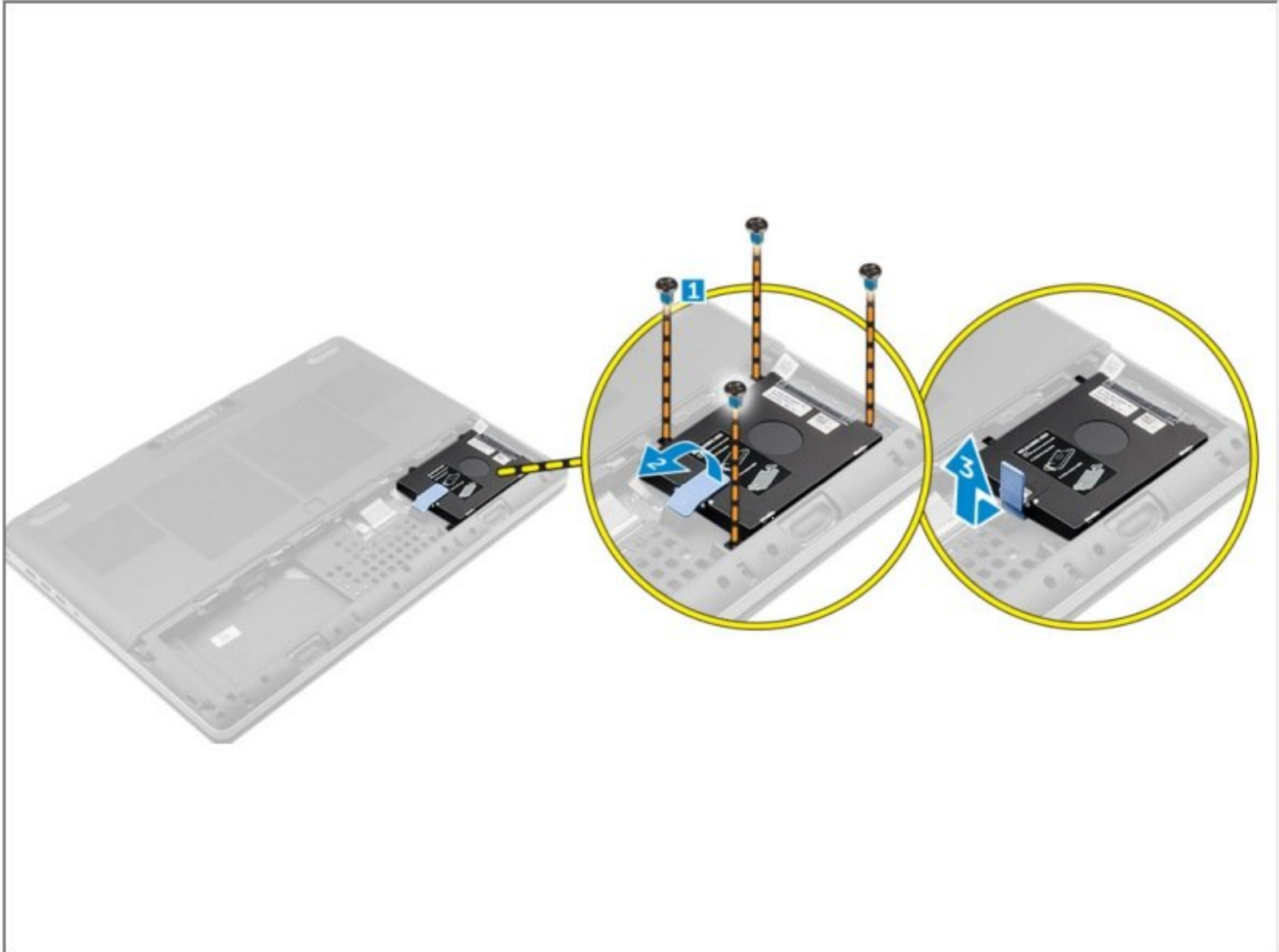




Dell Precision 7510 Hard Drive Replacement

Written By: Johnathan Hammond





TOOLS:

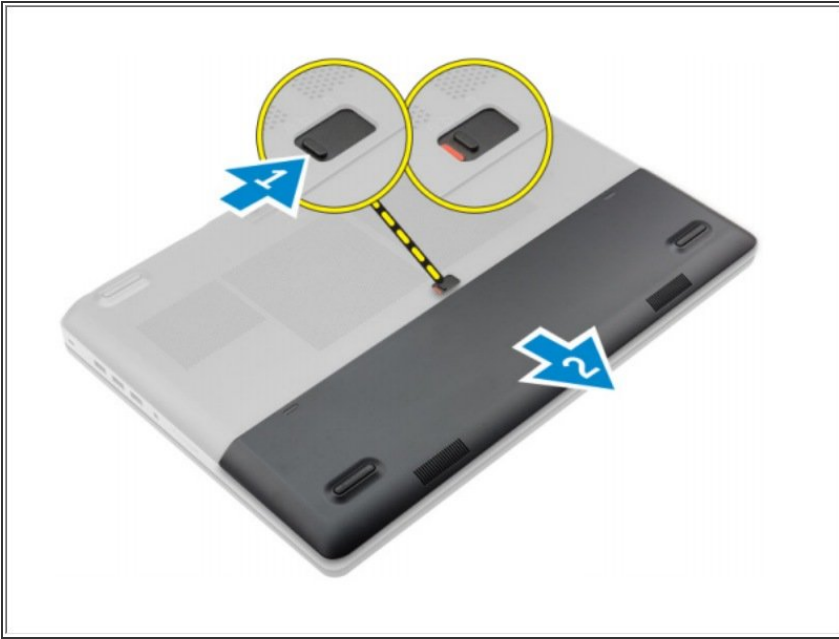
- [Phillips #0 Screwdriver](#) (1)



PARTS:

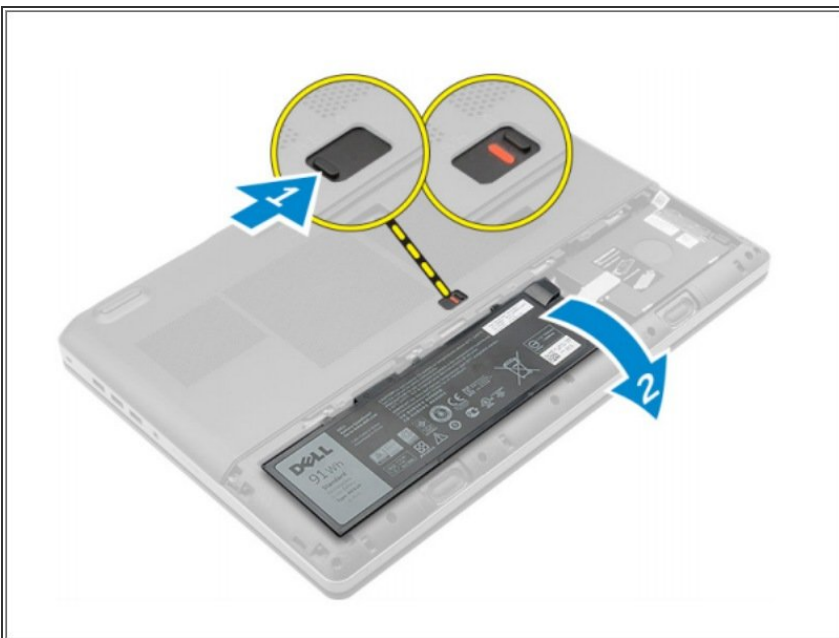
- [Crucial MX500 1 TB SSD](#) (1)
- [Crucial MX500 250 GB SSD](#) (1)
- [Crucial MX500 500 GB SSD](#) (1)
- [Crucial MX500 2 TB SSD](#) (1)

Step 1 — Removing the Battery Cover



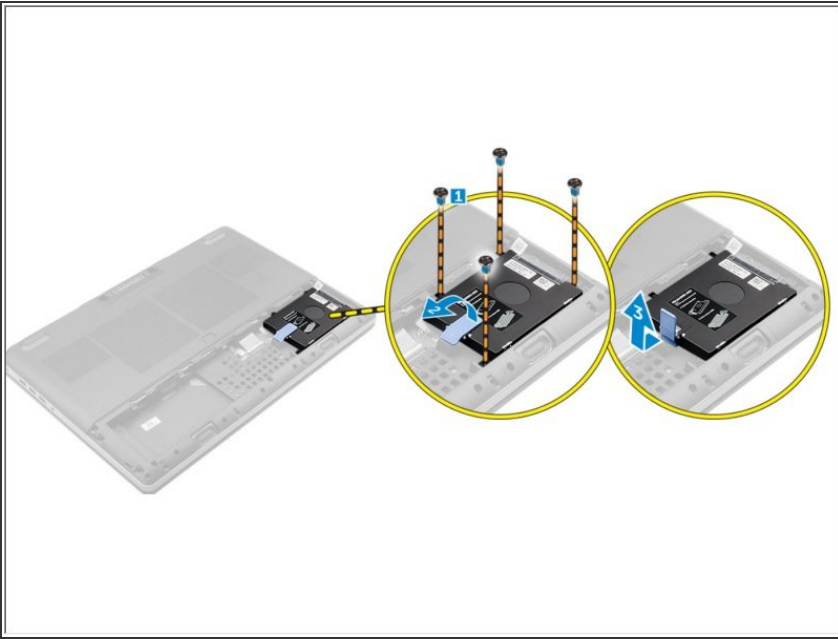
- Slide the release latch to unlock the battery cover.
- Slide and lift the battery cover to remove it from the computer.

Step 2 — Removing the Battery Cover



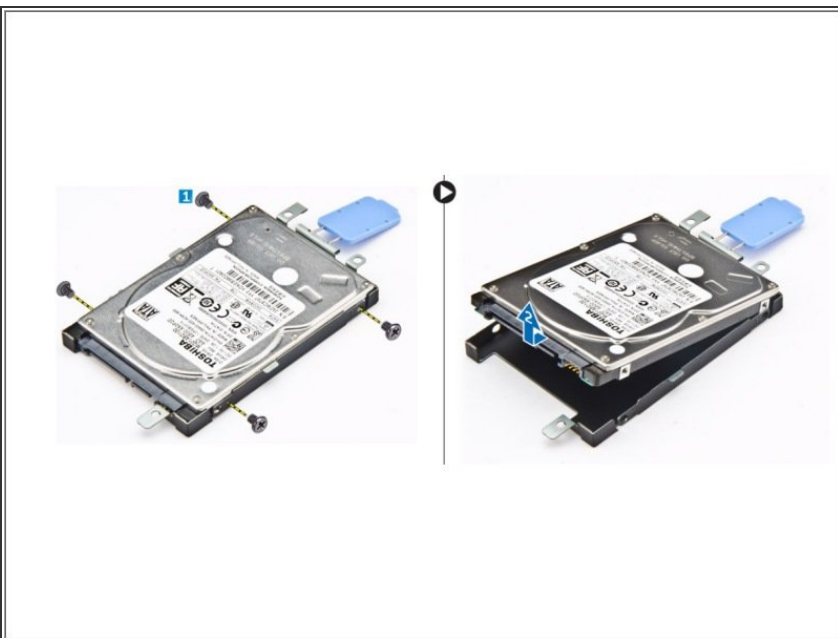
- Slide the release latch to unlock the battery cover.
- Slide and lift the battery cover to remove it from the computer.

Step 3 — Removing the Hard Drive



- Remove the screws that secure the hard drive to the computer.
- Lift the hard-drive latch to the unlock position.
- Slide and lift the hard drive from the computer.

Step 4 — Remove the Screws



- Remove the screws that secure the hard drive. Lift the hard drive away from the bracket.