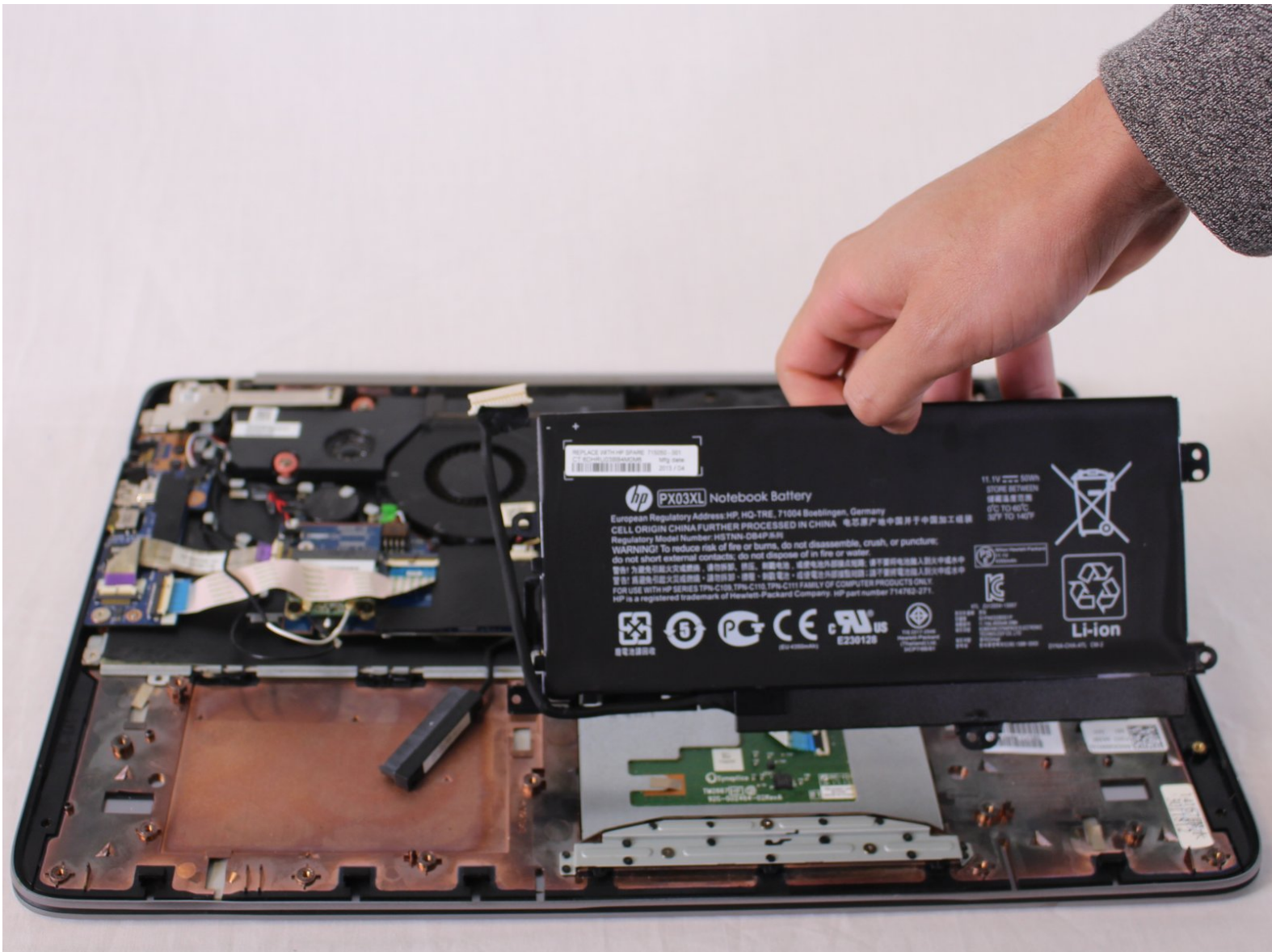




HP Envy Sleekbook m6-k010dx Battery Replacement

This guide is to help you replace your battery on the HP Envy Sleekbook m6-k010dx.

Written By: Ana Novo



INTRODUCTION

If your computer only turns on when connected to the charger, it might be time to replace your battery. This guide will walk you through simple steps to replace your HP Envy Sleekbook battery.



TOOLS:

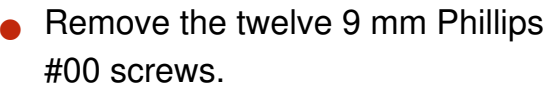
- [Phillips #00 Screwdriver](#) (1)
- [iFixit Opening Tools](#) (1)



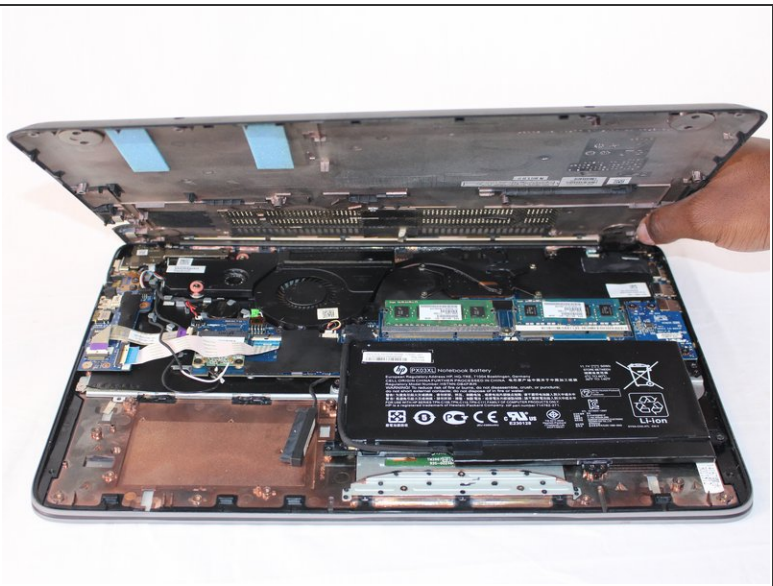
PARTS:

- [HP PX03XL Replacement Laptop Battery](#) (1)

Step 1 — Battery

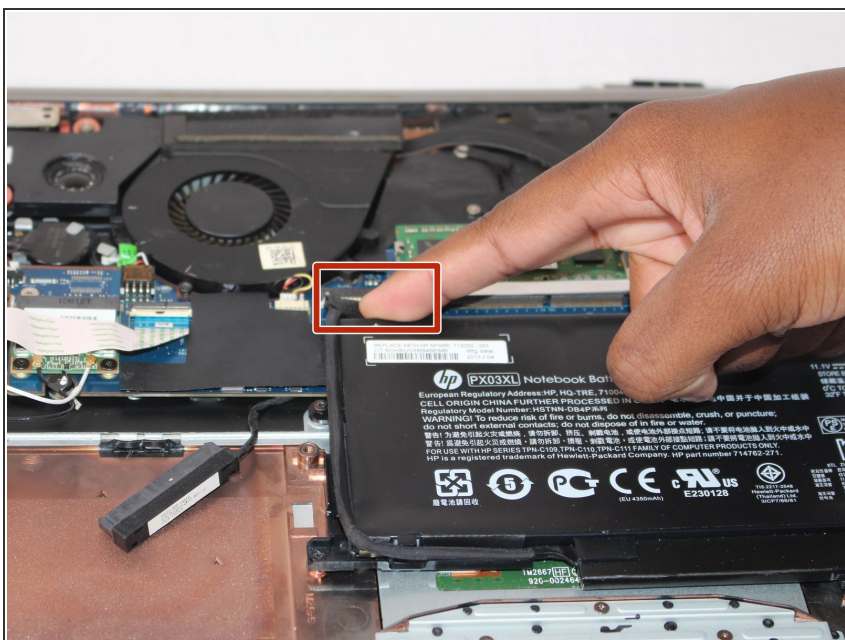


Step 2



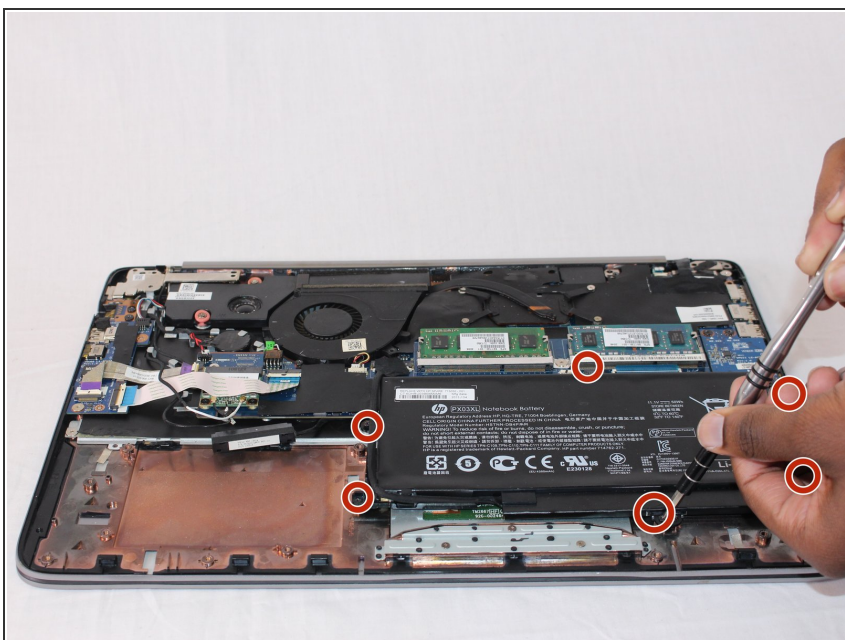
- Use the plastic opening tool and your hands to remove the bottom cover.

Step 3



- Disconnect the battery power cable from the motherboard.

Step 4



- Remove the six 6 mm Phillips #00 screws from the battery.

Step 5



- Lift the battery out of the laptop.

To reassemble your device, follow these instructions in reverse order.