



Keurig K55 Power Cable Replacement

How to replace the Keurig K55 power cable.

Written By: William O'Brien



INTRODUCTION

If your Keurig is unable to turn on, you may need to replace your power cable with this guide.



TOOLS:

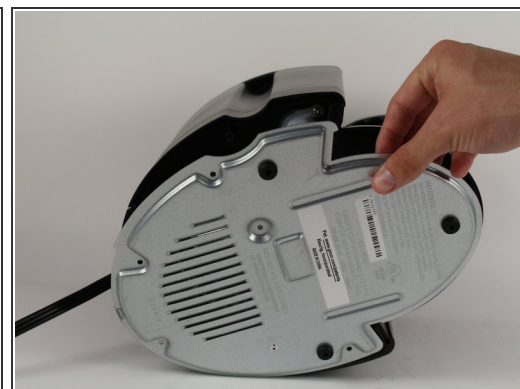
- [Phillips #0 Screwdriver](#) (1)
-

Step 1 — Power Cable



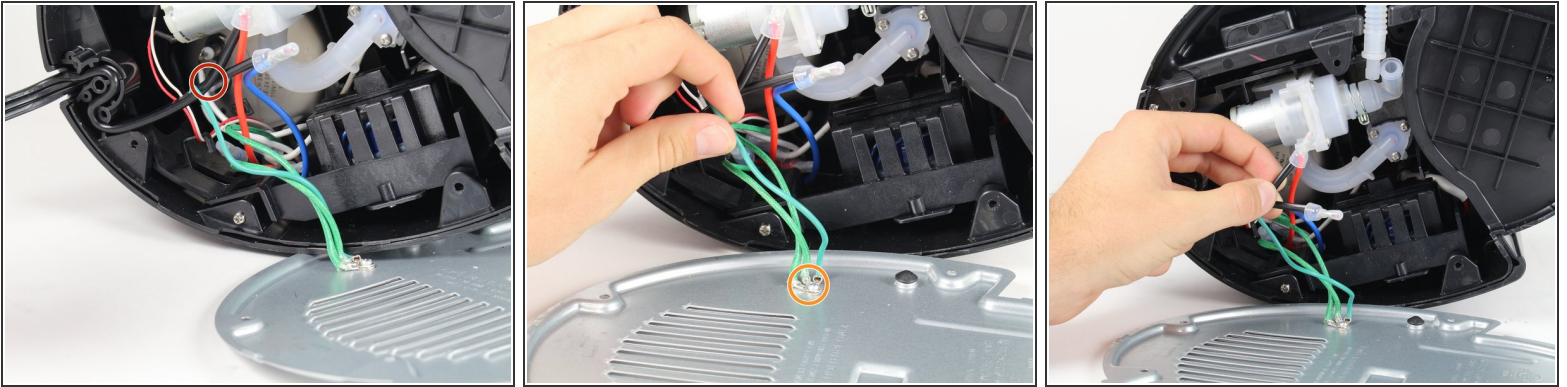
- Access the bottom of the Keurig by flipping it on its side.

Step 2



- Remove the five 13mm Phillips #0 screws securing the bottom case.
- Pull the silver cover off of the device.

Step 3



- To remove the power cable, highlighted in red, follow iFixit's guide on [soldering](#).
- The ground cable, highlighted in orange, needs to be re-soldered to your new power cable.

To reassemble your device, follow these instructions in reverse order.