



Instant Pot IP-DUO80 V2 LED Display Replacement

How to replace the LED Display on the Instant Pot IP-DUO80 V2.

Written By: Kayla Meacham



INTRODUCTION

The LED display is how you communicate with your Instant Pot. This guide will show you how to remove the display from the front of your device.

TOOLS:

- [T15 Torx Screwdriver](#) (1)
 - [Phillips #1 Screwdriver](#) (1)
-

Step 1 — LED Display



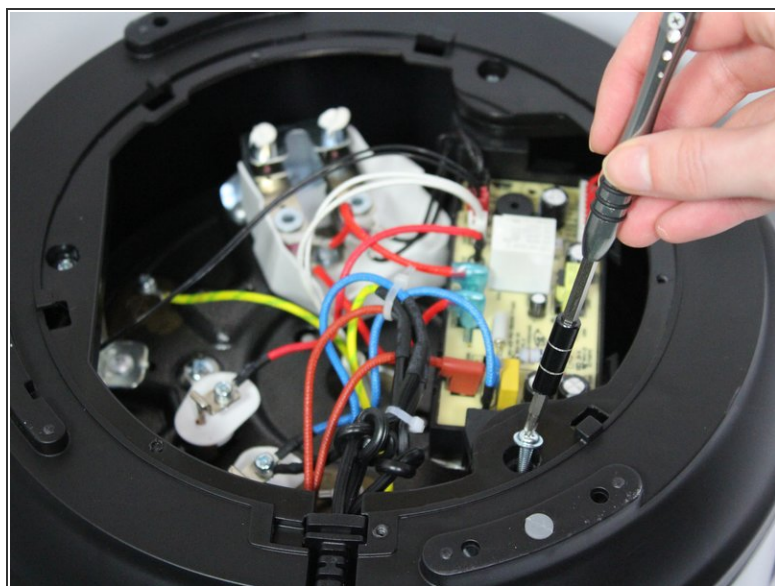
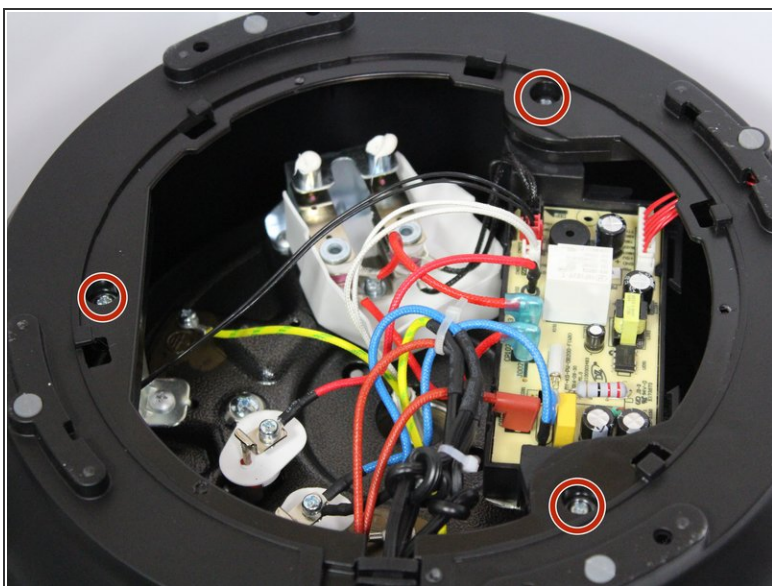
- Open the lid by turning it counter-clockwise and lifting up.
- Remove the inner pot.

Step 2



- Turn the Instant Pot upside down.
- Remove the single 12-mm screw by using the T-15 head screwdriver and turning it counter-clockwise.
- Turn the plate counter-clockwise and lift it off the Instant Pot.

Step 3



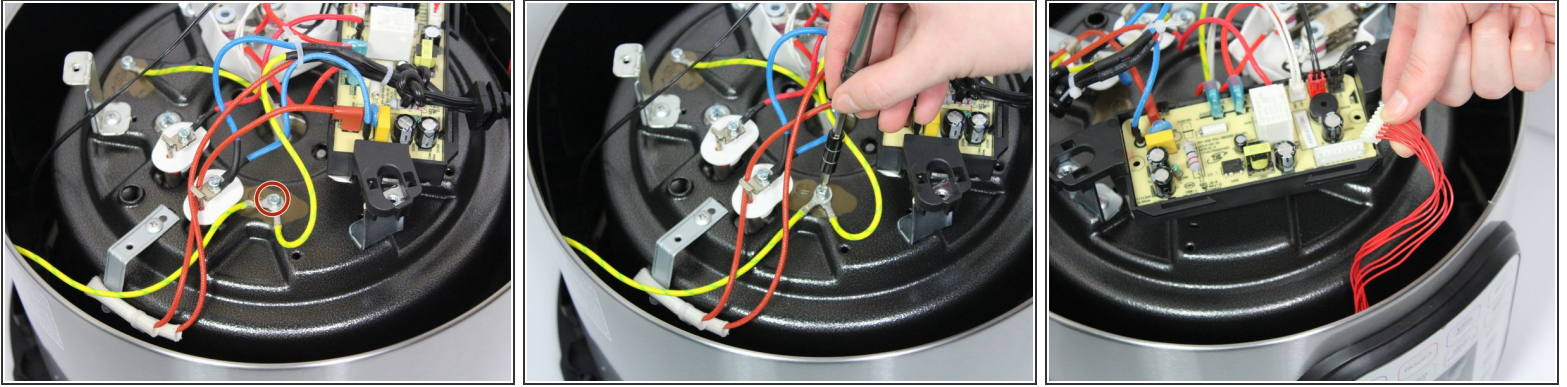
- Remove the three 19-mm screws in the black plastic base's edge using the PH-1 head screwdriver and twisting counter-clockwise.

Step 4



- Pull the power cord out of its slot.
- Pull up on the edge of the black plastic base to remove the base.

Step 5



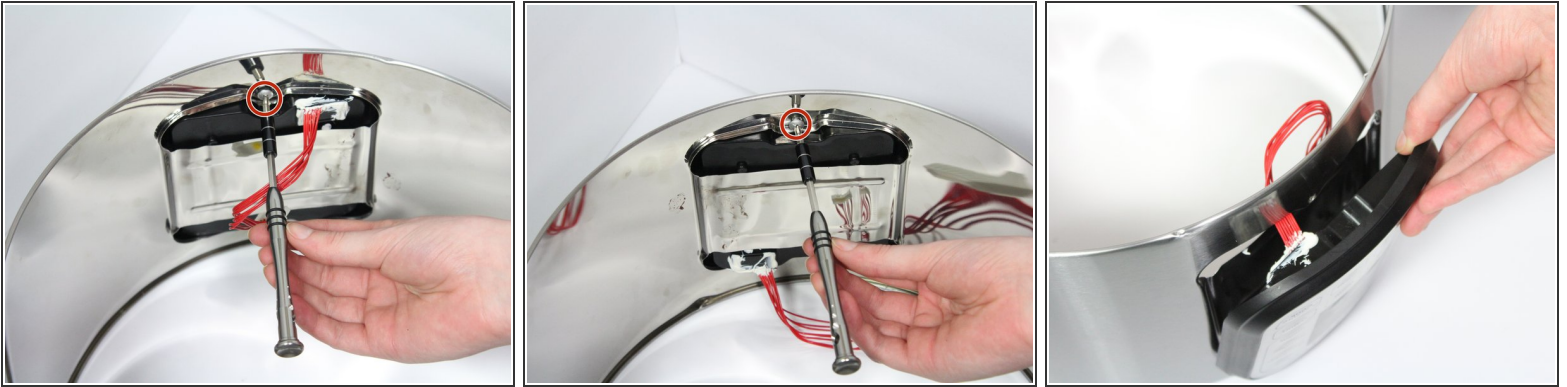
- Disconnect the two green-striped yellow wires that are connected onto the bottom of the heating element. Use a PH-1 head screwdriver and turn counter-clockwise to remove the 10-mm screw holding them in place.
- ⓘ Be careful not to lose the small washer that comes with this screw.
- Pull up on the cn101 connection to detach the LED display from the motherboard.

Step 6



- Lift the silver outer shell off of the top black ring.

Step 7



- Remove the two 10-mm screws connecting the LED display to the outer shell using a PH-1 head screwdriver and twisting counter clockwise.
- Pull out the LED display by pulling on it gently.

To reassemble your device, follow these instructions in reverse order.