



# Ninja Professional BL610 Circuit Board Replacement

This guide illustrates how the circuit board can be replaced in a Ninja Professional Blender if it no longer functions.

Written By: Rosniel Castro



---

## INTRODUCTION

Use this guide to replace the circuit board in your Ninja Professional BL610.



### TOOLS:

- [Phillips #2 Screwdriver](#) (1)
  - [Soldering Iron](#) (1)
-

## Step 1 — Circuit Board



- Remove six screws (13mm long, 6mm head diameter) from bottom of the blender using a Phillips #2 screwdriver

## Step 2



- Remove six screws (12mm long, 6mm head diameter) from component housing using Phillips #2 screwdriver.

### Step 3



- Remove six screws (9mm long, 2mm head diameter) from component housing using Phillips #2 screwdriver

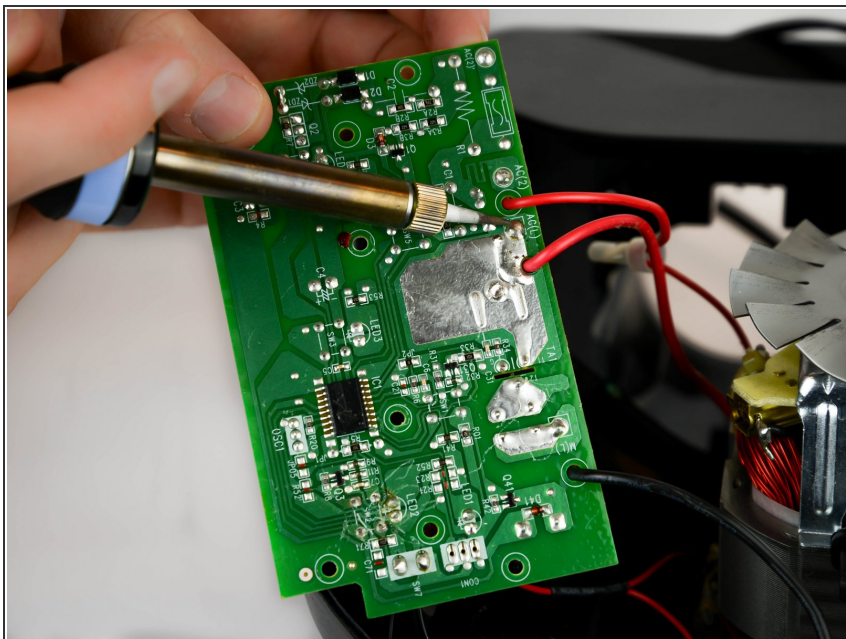
### Step 4



- Locate the black and red wire that connect to the circuit. Locate where they are soldered on the back.



## Step 5



- Desolder both wires from the solder pads shown.

To reassemble your device, follow these instructions in reverse order.