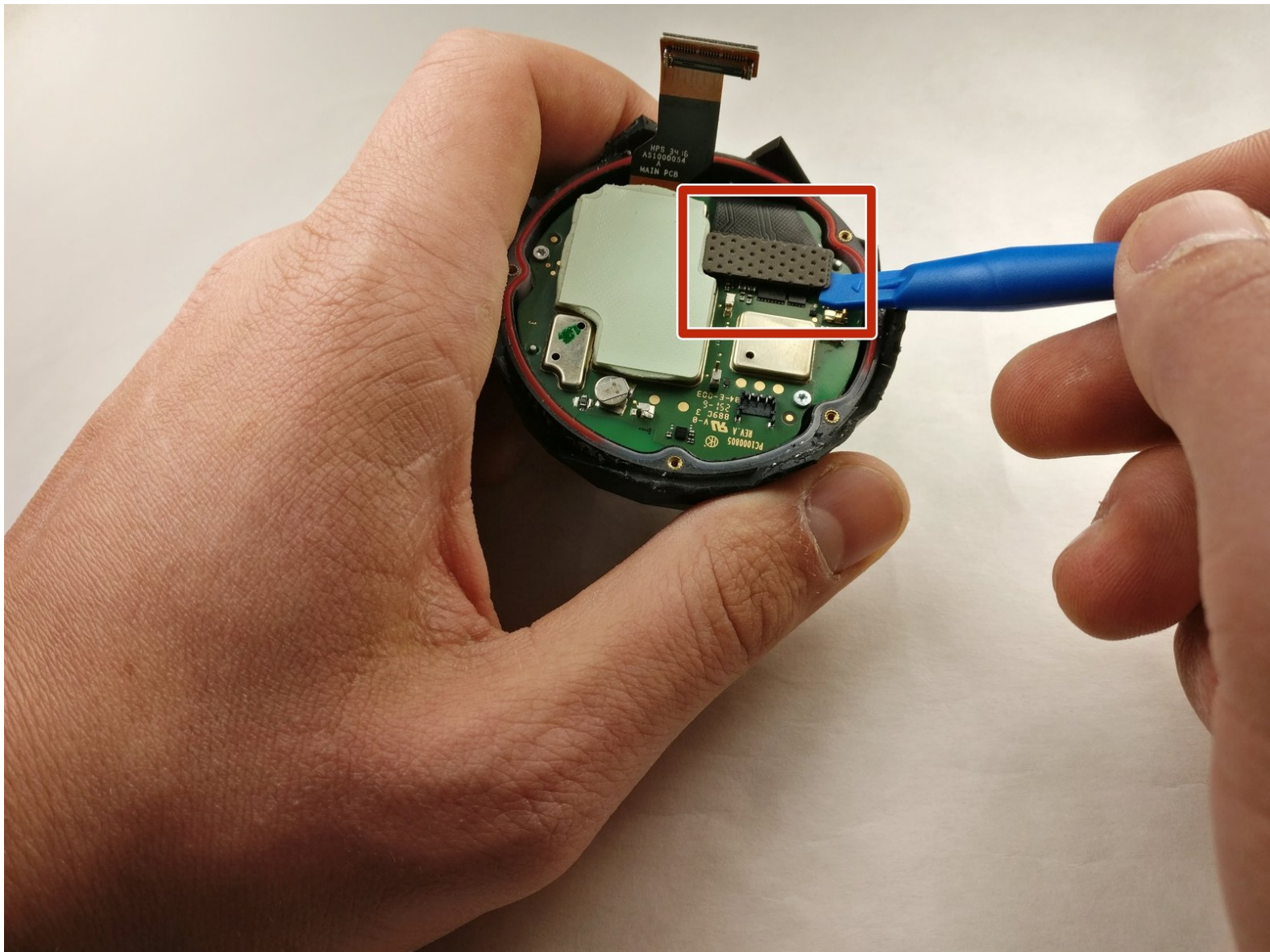




# 360fly 4K SD Card Replacement

This guide shows how to replace the SD memory card in a 360fly 4K camera.

Written By: Jacob Herron



# INTRODUCTION

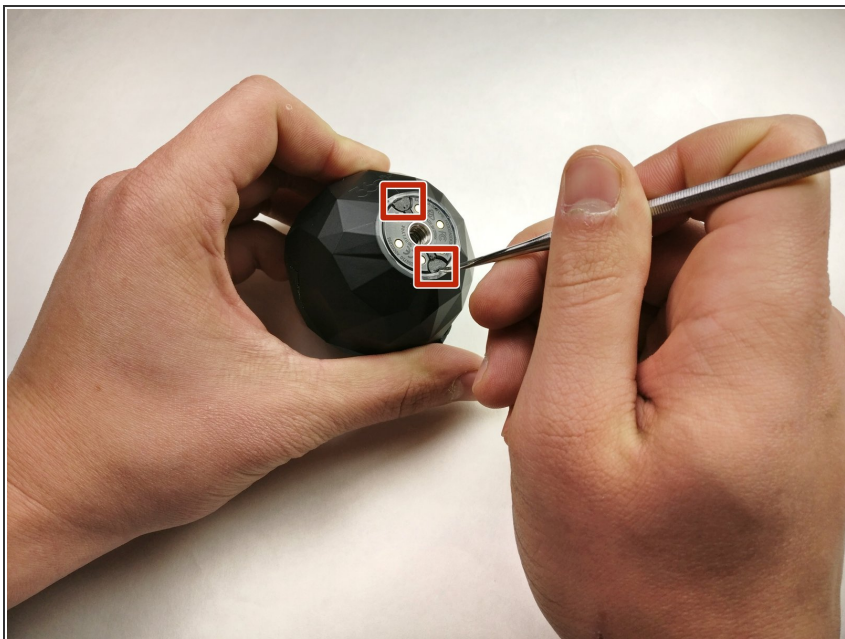
This guide walks you through how to replace the SD memory card on a 360fly 4K camera.



## TOOLS:

- [Metal Spudger](#) (1)
  - [iFixit Opening Tool](#) (1)
  - [T4 Torx Screwdriver](#) (1)
-

## Step 1 — Battery



- Flip the camera upside down and peel off the two plastic screw covers with the metal spudger to reveal the screws.

## Step 2



- Remove the two 5 mm screws from the bottom of the camera with a T4 screwdriver.

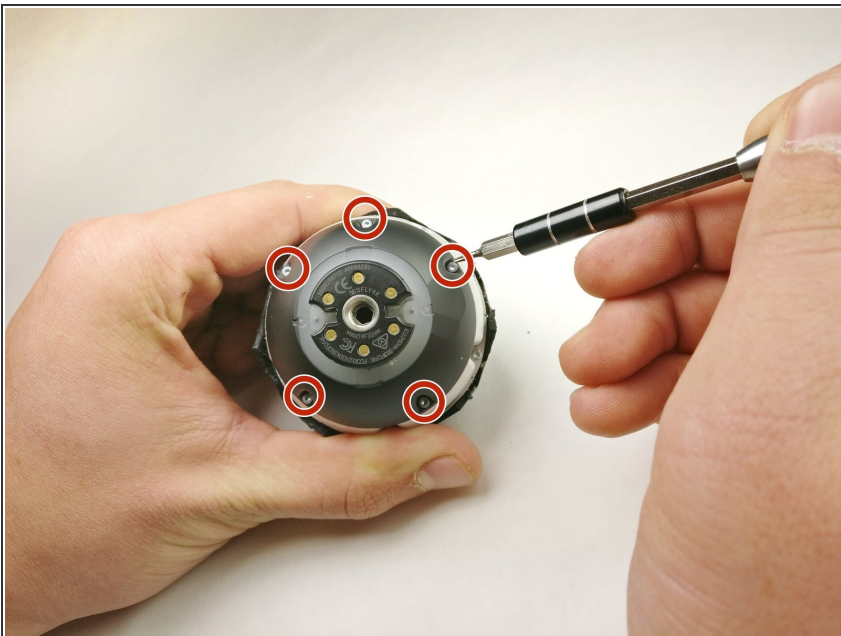


### Step 3



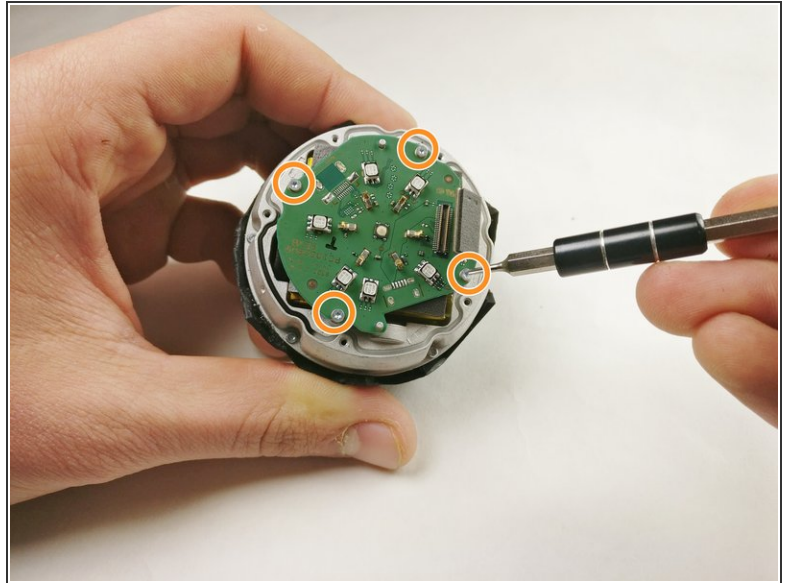
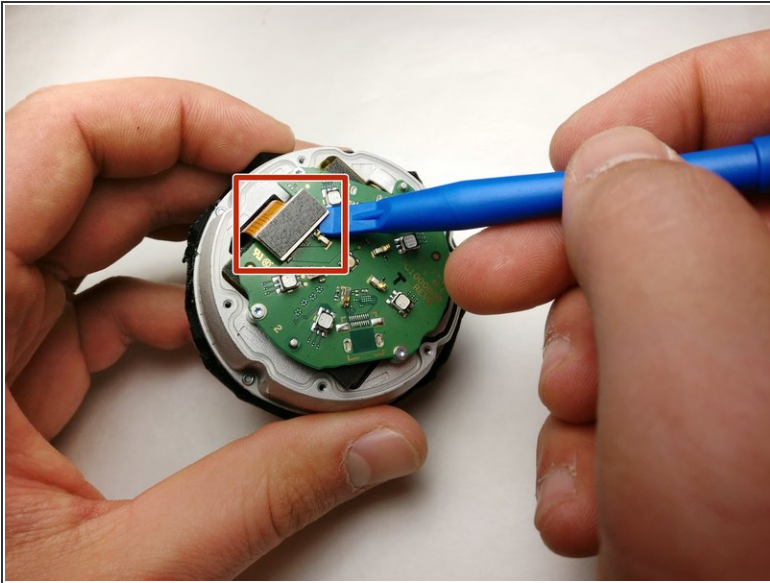
- Gently pry the plastic ring from around the charging plate with the metal spudger.
- Remove the outside shell by pressing against the center of the charging plate and pulling the bottom shell away from the top shell.

### Step 4



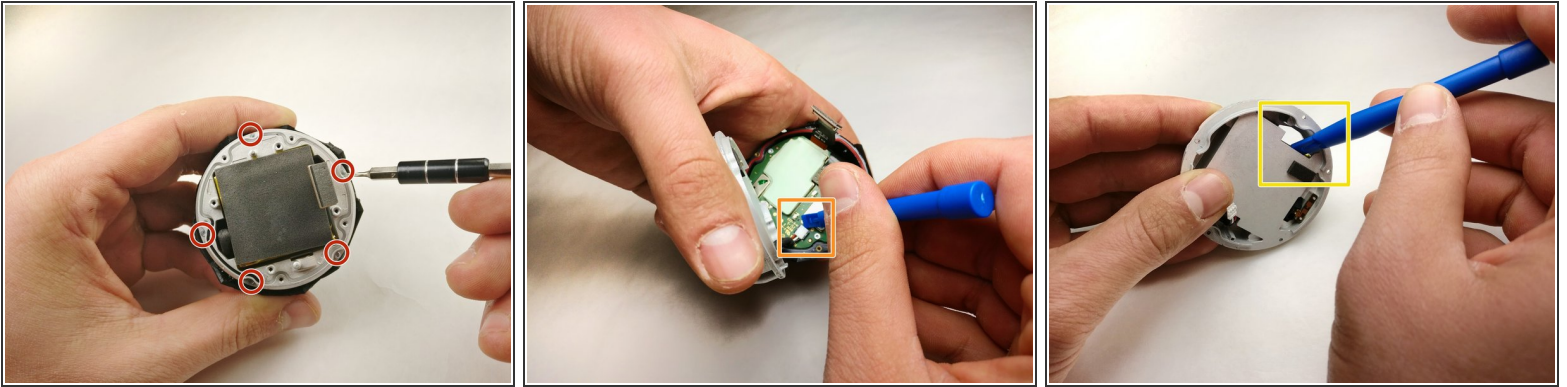
- Remove the five 2 mm screws using a T4 screwdriver.
- Pull off the charging plate assembly.

## Step 5



- Gently pry the plug off the port on the circuit board with a plastic opening tool.
- Remove the four 2 mm screws using a T4 screwdriver.
- Remove the circuit board from the device.

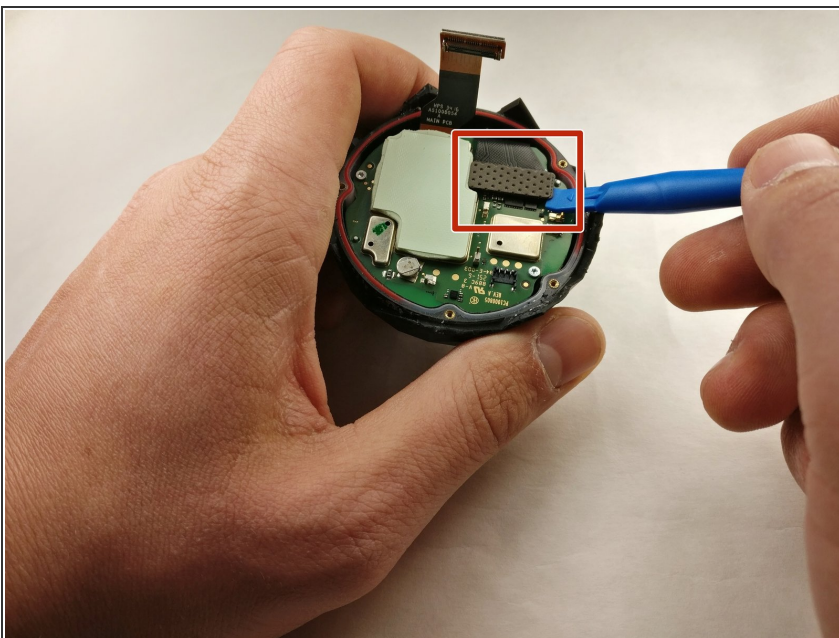
## Step 6



- Remove the five 4 mm screws around the battery assembly with a T4 screwdriver.
- Lift the battery assembly and gently pry the plug out of its port on the board below with a plastic opening tool.
- Press the battery from the back of the battery assembly to remove it with a plastic opening tool until the glue releases the battery.

**⚠ Potential for device damage: Do not puncture or bend the battery. Use a small amount of heat to assist in softening the adhesive if necessary.**

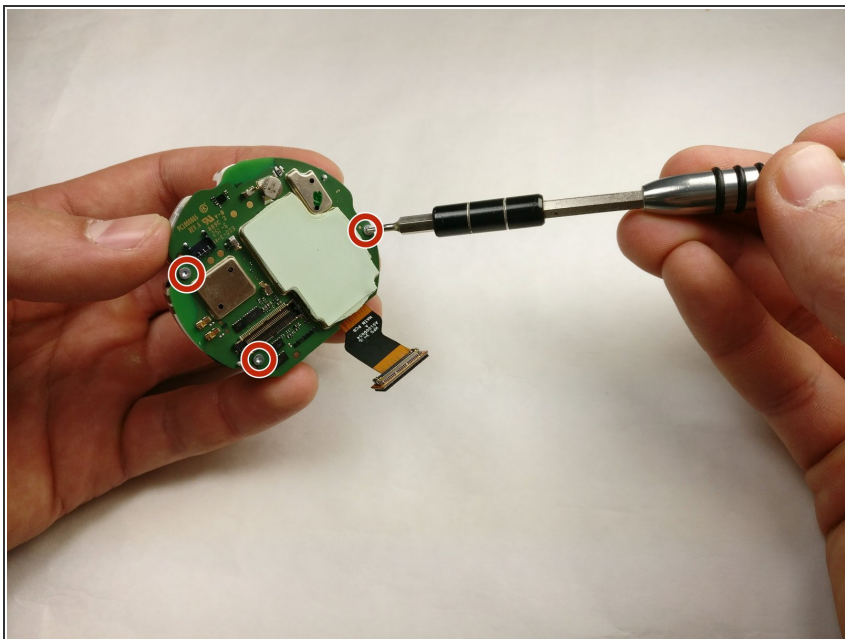
## Step 7 — SD Card



- Gently pry the plug from the motherboard and remove the motherboard from the assembly.

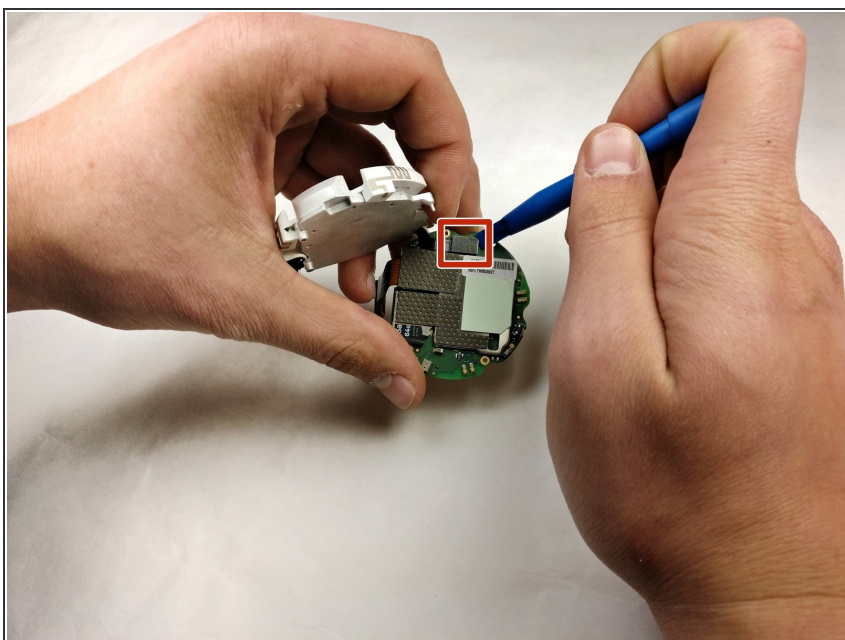


## Step 8



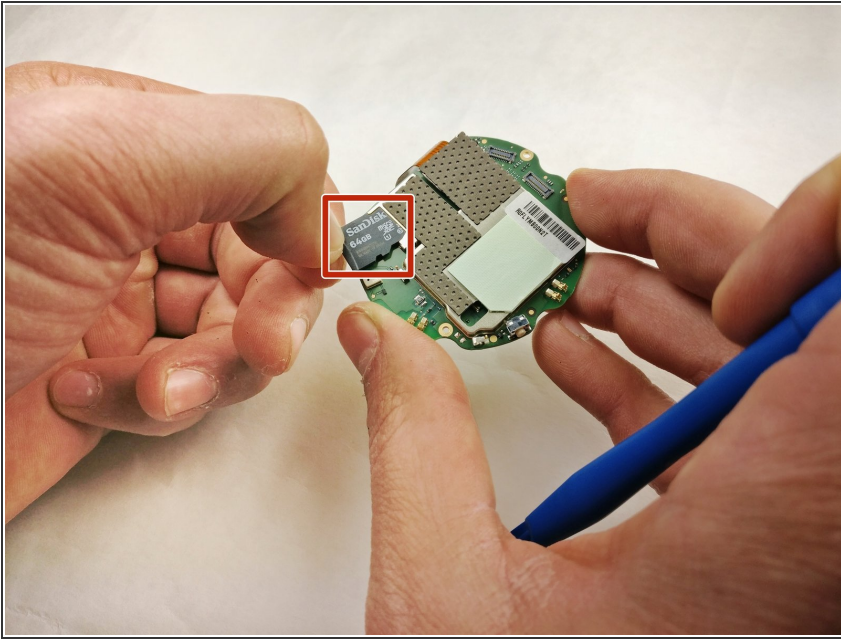
- Remove the three 3 mm screws from the circuit assembly with a T4 screwdriver.

## Step 9



- Gently pry out the plug from the circuit assembly.

## Step 10



- Press and release the SD card to remove it from the circuit assembly.

To reassemble your device, follow these instructions in reverse order.